

# Subracks, individual components

## Horizontal rails



### Double front horizontal rail, with 10 mm extension (B1)

To accommodate guide rails and for the attachment of front panels.

- Front projection and pitch pattern of holes based on IEEE 1101.10 and IEC 60 297-5-101, for use of type IV and VII injector/extractor handles
- HP pitch patterns of holes for the precise installation of guide rails
- M4 thread on end face
- Straight-through core hole

**Material:**

Extruded aluminium section

**Surface finish:**

Clear-chromated

Usable width (HP)	Packs of	Model No. RP
84	1	3687.724



**Also required:**

Assembly screws M4 x 12, packs of 100, Model No. RP 3654.300, see page 576.

3.5 B Subracks, individual components



### Rear horizontal rail (C1)

To accommodate guide rails and for the attachment of Z rails, insulating strips or conductive strips and backplanes.

- Tapped holes M2.5 on a 1 HP pitch pattern
- HP pitch patterns of holes for the precise installation of guide rails in the HP pitch pattern
- M2.5 thread for the installation of Z-rails, or backplanes.
- M4 thread on end face
- Straight-through core hole
- Horizontal rail 192 HP without machining on the end faces. Suitable for cutting to length

**Material:**

Extruded aluminium section

**Surface finish:**

Clear-chromated or anodised

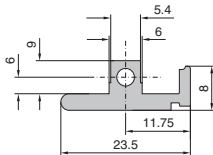
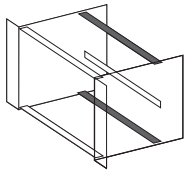
Usable width (HP)	Packs of	Model No. RP
21	1	3685.991
40	1	3684.962
42	1	3684.570
63	1	3684.571
84	1	3684.572
84	2	3685.268 <sup>1)</sup>
192	1	3688.002 <sup>2)</sup>

<sup>1)</sup> Including 4 assembly screws  
<sup>2)</sup> Anodised



**Also required:**

Assembly screws M4 x 12, packs of 100, Model No. RP 3654.300, see page 576.



### Rear horizontal rail, reinforced version (C2)

For use with high loads.

**Material:**

Extruded aluminium section

**Surface finish:**

Clear-chromated

Usable width (HP)	Packs of	Model No. RP
42	1	3687.604
63	1	3687.605
84	1	3687.606



**Also required:**

Assembly screws M4 x 12, packs of 100, Model No. RP 3654.300, see page 576.



**Accessories:**

Threaded inserts, see page 504.

