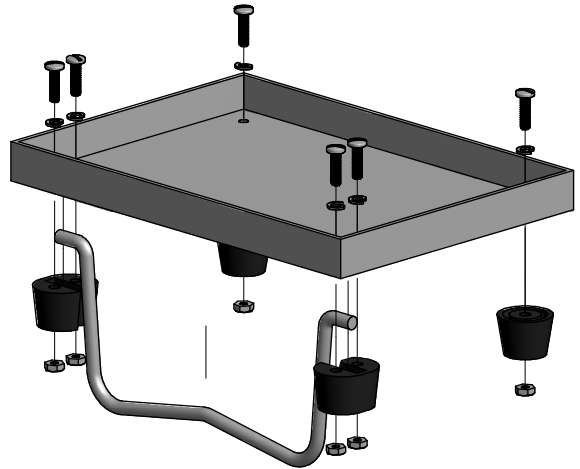
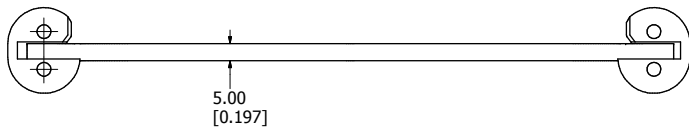
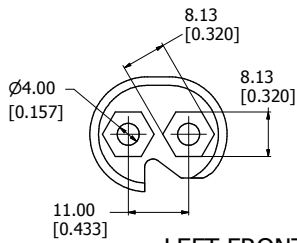


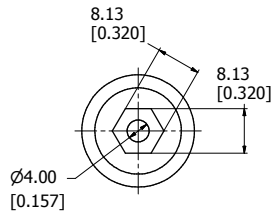
BAIL WITH FRONT FEET



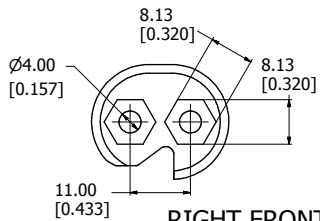
EXPLODED BAIL ASSEMBLY (BOX NOT INCLUDED)



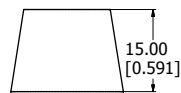
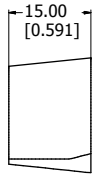
LEFT FRONT FOOT



BACK FOOT



RIGHT FRONT FOOT



1427D7	
Bail - Bright Chrome Plated Steel	
Feet - Matte Black Plastic	
Hardware	
6 Screws - Panhead 6-32 x 1/2"	
6 Nuts - #6-32 Hex Nut	
6 Washers - #6 Lock-Washer	
**note bail sold singly	



HAMMOND
MANUFACTURING™

1427D7