

482.6 mm (19") installation

482.6 mm (19")/metric installation



Captive nuts M5/M6

For the attachment of rack-mounted electronic equipment, 482.6 mm (19") installed equipment and blanking plates to mounting angles, 482.6 mm (19").

For use with metal thickness from 0.8 – 2.0 mm. In areas of narrow tolerance, captive nuts for metal thicknesses of 1.2 – 1.5 mm should be used. Optionally with or without contact of the installed equipment to the 482.6 mm (19") section/enclosure.



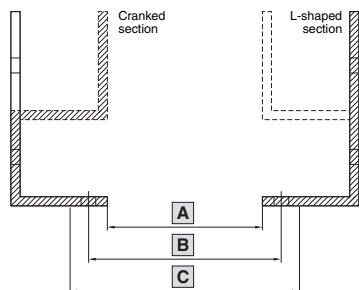
Captive nut M5

Design	For metal thicknesses mm	Packs of	Model No. EL
With contact	0.8 – 2.0	50	2094.500
Without contact	0.8 – 2.0	50	2092.500

Captive nut M6

Design	For metal thicknesses mm	Packs of	Model No. EL
With contact	0.8 – 2.0	50	2094.200
Without contact	0.8 – 2.0	50	2092.200
With contact	1.2 – 1.5	50	2094.300
Without contact	1.2 – 1.5	50	2092.300

Explanation of the fastening dimensions in interior installations



- A** = Clearance width
- B** = Mounting dimension
- C** = External dimension of the rack-mounted equipment or of the front panels

Installation width	A mm	B mm	C mm
19"	450	465	482.6
21"	500	515	533.4
23"	552	567	584.2
24"	577	592	609.6
10"/39 HP	221.4	236	254
1/2 19"/42 HP	236.6	251.2	269.2
9.5"	208.7	223.3	241.3
18 SU	450	465	485
20 SU	500	515	535

482.6 mm (19")/metric installation

B
7.8