

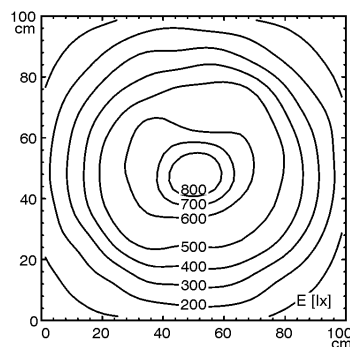
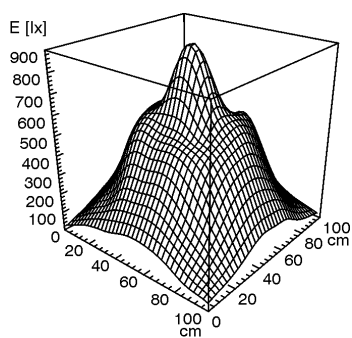
LED machine luminaire



FLAT LED - MYAL 6 S

connected load	10-40 V; DC
fitted with	1 x LED lamp 12 W
work equipment	without
mains lead	approx. 3.0 m; with free stranded wires
luminaire body	
material	aluminium
surface	anodised
weight (net)	approx. 1,0 kg
fastening	screws
technology	switchable
usage	without switch
lamp cover	glass screen
glare-free	without
system of protection	IP 67
class of protection	III
article no.	112560000

E_{min}: 49 lx
 E_m: 347 lx
 E_{max}: 869 lx



measuring conditions: d=100cm