

3 24 5275 (1278 Series)

Bargraph Anzeige
 4-, 10-, 20-fach

Bargraph display
 4, 10, 20 fold

Technische Daten	Technical Data	
Blende	Diaphragme	PC schwarz / PC black UL94
LL-Werkstoff	LL-Material	PC glasklar / PC clear UL94
Umgebungstemperatur	Ambient Temperature	-40°C ... +85°C
ESD-Schutz	ESD-Protection	8 kV

CTL
 COMPONENTS
 plc

FROM

Sanj Pankhania HND Elec Eng. EPI
 Product Manager - Electronics

and
 line
 mit
 fen
 'er-
 ch-

The light guide system is a 2.54 mm pitch and is available as a 4-fold, 10-fold and 20-fold display. A screen is integrated to prevent irradiation to the adjacent displays, so that also mixed colours can be used. The light guide is held in place on the printed board via press-in lugs. The light guide is used in conjunction with SMD LEDs. The light guide system is suitable for bargraph displays of minimum 4 displays. Coloured lightguide on request.

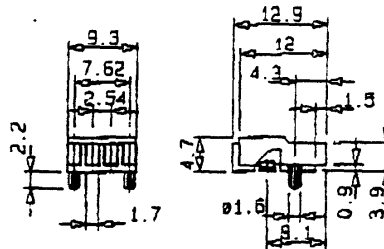
CTL Components plc
 Falcon House, 19 Deer Park Road
 London SW19 3UX
 Telephone: 020 8545 8700 (Direct 8719)
 Mobile: 07710 591 379
 Fax: 020 8540 0034
 E-mail: info@ctl-components.com
 Internet: www.ctl-components.com



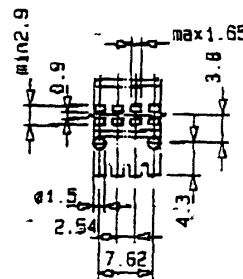
4-fach Anzeige 4 fold display

* Empfohlene LED's Recommended LED's	Art. Nr.
P1 - P7	1278.1004

Seite / page 21



Layoutvorschlag
 Layout Suggestion



① or ②

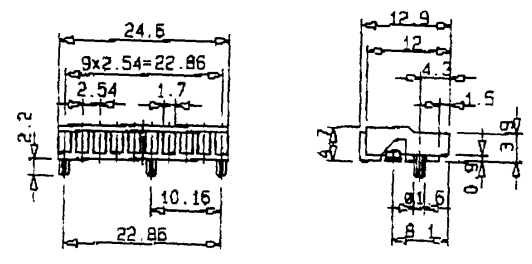
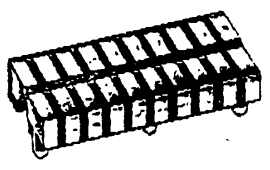
Allgemeine Hinweise siehe Seite 3
 Technische Daten der LED's siehe Seite 25/26

General remarks on page 3
 LED-Specification on page 25/26

Bargraph Anzeige 4-, 10-, 20-fach

Bargraph display 4, 10, 20 fold

Technische Daten	Technical Data	
Blende	Diaphragme	PC schwarz / PC black UL94
LL-Werkstoff	LL-Material	PC glasklar / PC clear UL94
Umgebungstemperatur	Ambient Temperature	-40°C ... +85°C
ESD-Schutz	ESD-Protection	8 kV

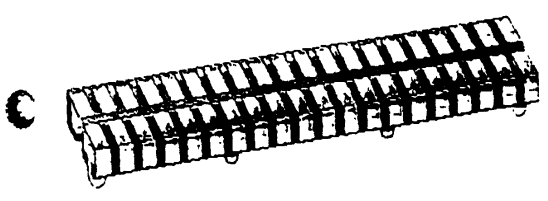
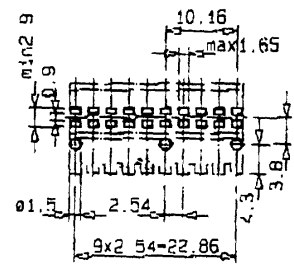


10-fach Anzeige 10 fold display

* Empfohlene LED's Recommended LED's	Art. Nr.
P1 - P7	1278.1010

* Seite / page 21

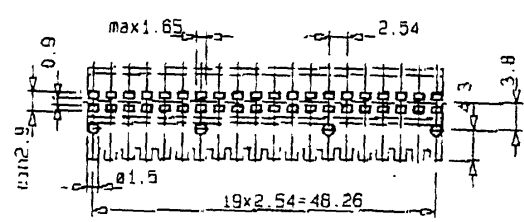
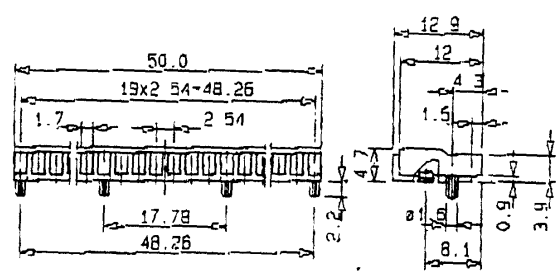
Layoutvorschlag
Layout Suggestion



20-fach Anzeige 20 fold display

* Empfohlene LED's Recommended LED's	Art. Nr.
P1 - P7	1278.1020

* Seite / page 21



Sonderausführungen (5- bis 19-fach)
Mindestbestellmenge = 1000 Stück / auf Anfrage
Special application (5-19 fold)
Minimum quantity = 1000 piece / on request

② of ②

Allgemeine Hinweise siehe Seite 3
Technische Daten der LED's siehe Seite 25/26

General remarks on page 3
LED-Specification on page 25/26