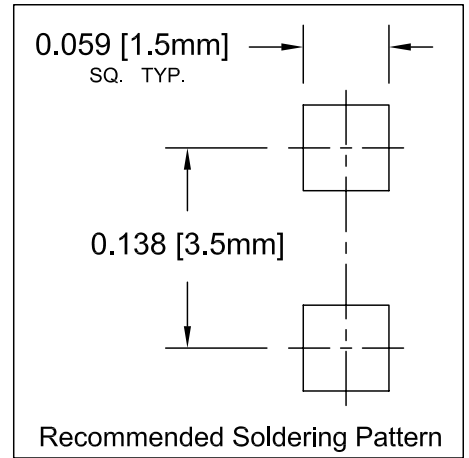
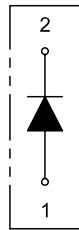
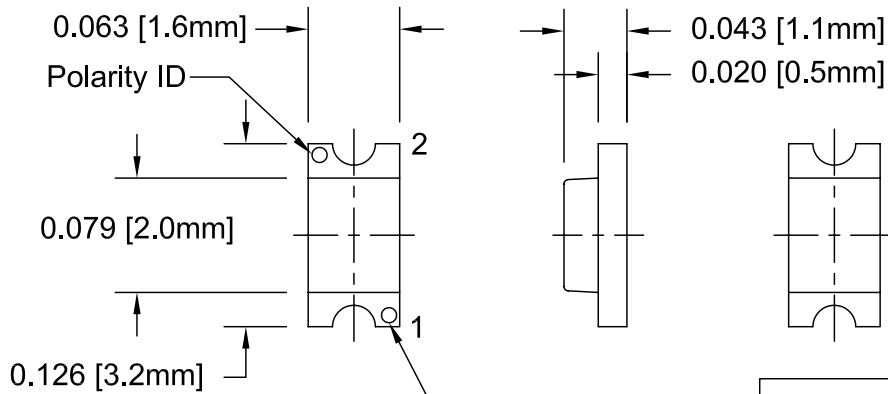


REV.	DESCRIPTION	DATE	APPROVED
A	Engineering Update w/o Changes	03/10/04	M. C.
B	Image Orientation Update w/o Changes	02/23/05	M. C.
C	Updated SM1206UWC Lens Appearance	04/24/08	M. C.
D	Updated Anode Marking for SM1206HC and SM1206SRC	05/21/08	M. C.



### ABSOLUTE MAXIMUM RATINGS (Ta=25° C)



REVERSE VOLTAGE _____	5V
REVERSE CURRENT _____	100uA
OPERATING TEMPERATURE RANGE _____	-25° C - 85° C
STORAGE TEMPERATURE _____	-30° C - 100° C
LEAD SOLDERING TEMPERATURE(1/16" FROM BODY) _____	260° C FOR 5 SECONDS

STANDARD TOLERANCE (UNLESS OTHERWISE SPECIFIED)		 4 THOMAS, IRVINE, CA, 92618 TEL: (949) 951-8808 FAX: (949) 951-3974	
DECIMALS	ANGULAR		
.X ±.1	X° ±1°	TITLE: SM1206 SERIES	
.XX ±.02		PART NO: SM1206XXC	
.XXX ±.010		REVISION: D	
DESIGNED: David Green	DATE: 04/28/04	CAGE CODE : 32559 SHEET # 1 OF 3	
CHECKED: Ty Yin	DATE: 04/28/04	CAD GENERATED DOCUMENT. DO NOT MEASURE DRAWING.	

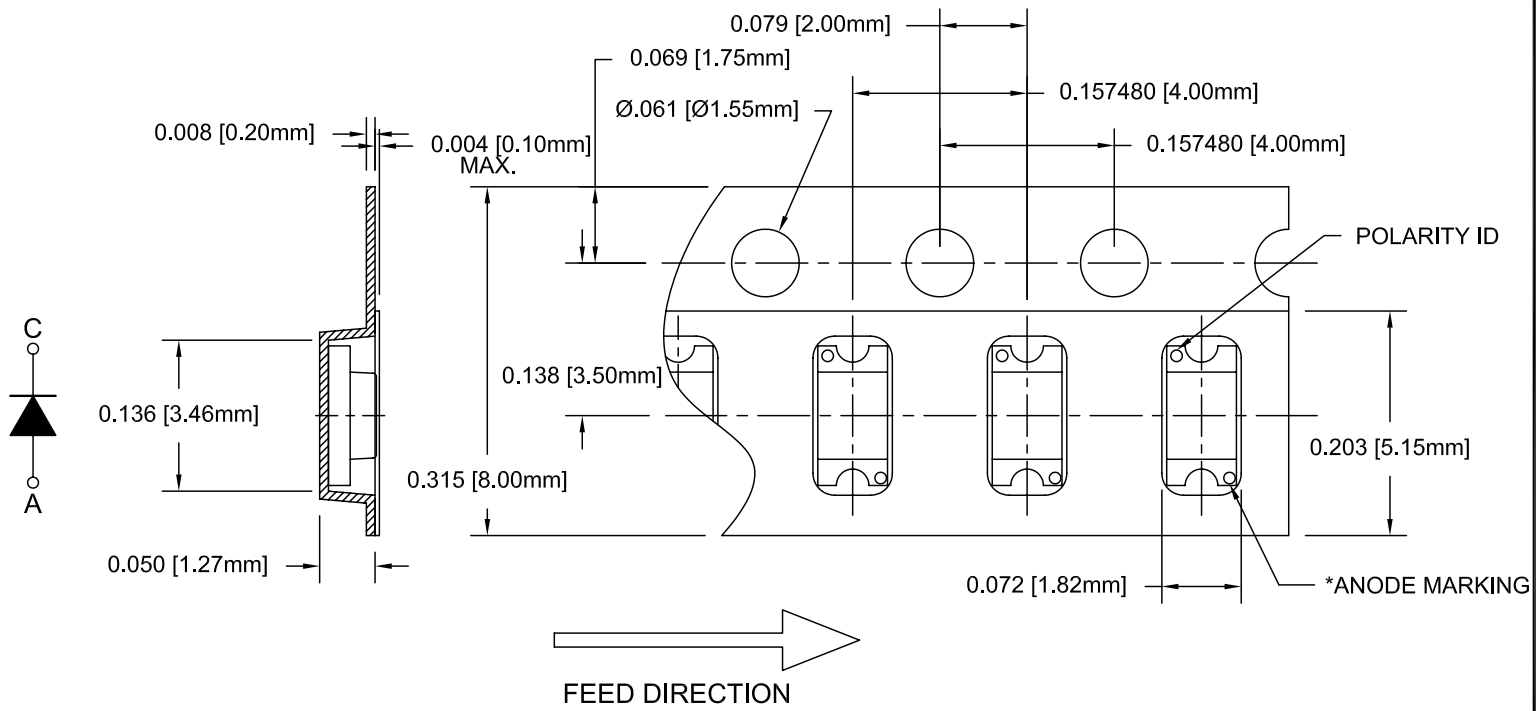
REV.	DESCRIPTION	DATE	APPROVED
	SEE SHEET#1.		

LED Part No.	Chip			Lens Appearance	Absolute Max. Ratings				Electro-Optical Data @ 20mA			Viewing Angle 2θ ½ (deg)
	Material	Peak Wave Length (nm)	Emitted Color		Δλ (nm)	Pd (mW)	If (mA)	Peak If (mA)	Vf (V)		Iv (mcd)	
									TYP	MAX	TYP	
SM1206BWC	GaN/SiC	430	SUPER BLUE	WATER CLEAR	65	70	15	150	3.8	4.5	20	140
SM1206UBWC	InGaN/SiC	470	ULTRA BLUE	WATER CLEAR	30	84	20	100	3.5	4.0	90	140
SM1206PGC	GaP	555	PURE GREEN	WATER CLEAR	25	100	30	150	2.2	2.6	2	140
SM1206GC	GaP	568	GREEN	WATER CLEAR	30	100	30	150	2.2	2.6	15	140
SM1206YC	GaAsP/GaP	585	YELLOW	WATER CLEAR	35	100	30	150	2.1	2.6	15	140
SM1206UYC	AlGaInP	588	ULTRA YELLOW	WATER CLEAR	15	100	30	150	2.0	2.6	60	140
SM1206AC	GaAsP/GaP	610	AMBER	WATER CLEAR	35	100	30	150	2.0	2.6	20	140
SM1206UOC	AlGaInP	620	ULTRA ORANGE	WATER CLEAR	17	100	30	150	2.0	2.6	75	140
SM1206HC*	GaAsP/GaP	635	HE RED	WATER CLEAR	45	100	30	150	2.0	2.6	20	140
SM1206SRC*	GaAlAs/GaAs	660	SUPER RED	WATER CLEAR	20	60	30	150	1.7	2.6	30	140
SM1206URC	GaAlAs/GaAs	660	ULTRA RED	WATER CLEAR	20	80	30	150	2.0	2.6	45	140
SM1206RC	GaP	700	RED	WATER CLEAR	90	50	15	50	2.2	2.6	3	140
SM1206UWC	InGaN	X=.29 Y=.30	WHITE	YELLOW	-	84	20	100	3.5	4.0	135	140


\*ANODE MARKING

STANDARD TOLERANCE (UNLESS OTHERWISE SPECIFIED) ±10% ALL VALUES		 <b>BIVAR</b> <sup>®</sup> 4 THOMAS, IRVINE, CA, 92618 TEL: (949) 951-8808 FAX: (949) 951-3974	
ANGULAR X° ± 5°		 TITLE: SM1206 SERIES	
DESIGNED: <b>David Green</b>	DATE: <b>04/28/04</b>	PART NO: <b>SM1206XXC</b>	REVISION: <b>D</b>
CHECKED: <b>T. Yin</b>	DATE: <b>04/28/04</b>	CAGE CODE : <b>32559</b>	SHEET # <b>2 OF 3</b>
CAD GENERATED DOCUMENT. DO NOT MEASURE DRAWING.			

REV.	DESCRIPTION	DATE	APPROVED
	See Sheet #1.		



2. UNLESS OTHERWISE SPECIFIED,  
PACKAGING TO COMPLY WITH EIA-481-B  
1. 3000 pcs PER REEL

STANDARD TOLERANCE ( UNLESS OTHERWISE SPECIFIED )		 <b>BIVAR</b> <sup>®</sup> 4 THOMAS, IRVINE, CA, 92618 TEL: (949) 951-8808 FAX: (949) 951-3974	
DECIMALS	ANGULAR		
.X ±.1	X° ±1°	TITLE: SM1206 SERIES PART NO: SM1206XXC REVISION: D	
.XX ±.02			
.XXX ±.010		CAGE CODE : 32559 SHEET # 3 OF 3 CAD GENERATED DOCUMENT, DO NOT MEASURE DRAWING.	
DESIGNED: David Green	DATE: 04/28/04	CHECKED: T. Yin	DATE: 04/28/04