

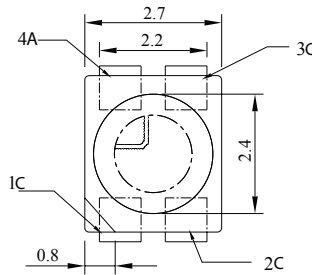
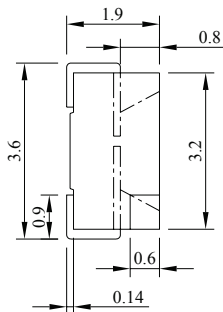
SMD Super Bright LED

OVS-30 Series

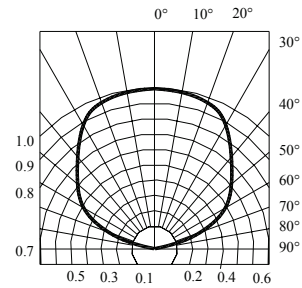
Features:

- Standard PLCC-4 Package
- High Reliability LED Package
- Super Wide Viewing Angle

Note: Electrical connections for all cathodes recommended



Radiation Diagram(s)



Maximum Ratings at Ta=25°C

| | |
|---|------------------|
| Reverse Voltage (<math><100\mu A</math>) | 5.0V |
| D.C. Forward Current | 30mA |
| Pulse Current (Pulse Width of 0.1ms, 1/10 Duty Cycle) | 100mA |
| Operating Temperature Range | -25 to +85°C |
| Storage Temperature Range | -40 to +100°C |
| Soldering Temperature Dip Soldering | 260°C for 5 secs |
| Soldering Temperature Hand Soldering | 350°C for 3 secs |

Electrical & Optical Characteristics at Ta=25°C

| Ant Part No. | LED Chip | | | Lens Colour | Dominant Wavelength (nm) at 20mA | Luminous Intensity (mcd) at 20mA | | Forward Voltage (V) at 20mA | | Viewing Angle 2 $\theta^{1/2}$ (deg) |
|--------------|------------------|----------------|------------|-------------|----------------------------------|----------------------------------|------|-----------------------------|------|--------------------------------------|
| | Material | Emitted Colour | Brightness | | | min. | typ. | typ. | max. | |
| OVS-3003 | InGaN / Sapphire | Blue | Mega | Water Clear | 465 | 80 | 200 | 3.2 | 4.0 | 120 |
| OVS-3004 | InGaN / Sapphire | True Green | Mega | Water Clear | 520 | 270 | 500 | 3.2 | 4.0 | 120 |
| OVS-3006 | AlGaInP/Si | Yellow | Mega | Water Clear | 589 | 200 | 450 | 2.1 | 2.5 | 120 |

| Ant Part No. | LED Chip | | | Lens Colour | Co-Ordinates for CIE Chromaticity at 20mA | | Luminous Intensity (mcd) at 20mA | | Forward Voltage (V) at 20mA | | Viewing Angle 2 $\theta^{1/2}$ (deg) |
|--------------|----------------|----------------|------------|-------------|---|--------|----------------------------------|------|-----------------------------|------|--------------------------------------|
| | Material | Emitted Colour | Brightness | | X Axis | Y Axis | min. | typ. | typ. | max. | |
| OVS-3001 | InGaN/Sapphire | White | Mega | Water Clear | 0.31 | 0.30 | 500 | 1250 | 3.2 | 4.0 | 120 |

Disclaimer This data sheet and its contents (the "Information") belong to the Premier Farnell Group (the "Group") or are licensed to it. No licence is granted for the use of it other than for information purposes in connection with the products to which it relates. No licence of any intellectual property rights is granted. The Information is subject to change without notice and replaces all data sheets previously supplied. The Information supplied is believed to be accurate but the Group assumes no responsibility for its accuracy or completeness, any error in or omission from it or for any use made of it. Users of this data sheet should check for themselves the Information and the suitability of the products for their purpose and not make any assumptions based on information included or omitted. Liability for loss or damage resulting from any reliance on the Information or use of it (including liability resulting from negligence or where the Group was aware of the possibility of such loss or damage arising) is excluded. This will not operate to limit or restrict the Group's liability for death or personal injury resulting from its negligence. SPC Multicomp is the registered trademark of the Group. © Premier Farnell plc 2008.