

UPS Evolution 650/850/1150/1550/2000 Evolution S 1250/1750/2500/3000

High density protection for network devices

Maximum availability

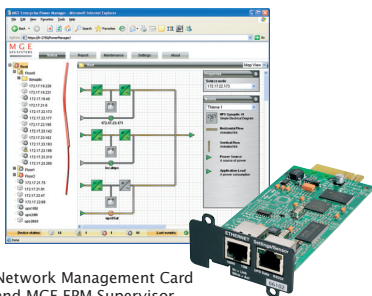
- ▶ Powershare. Evolution output receptacles are individually controlled to provide load-shedding to maximize backup time and provide remote reboot and sequential start-up.
- ▶ Continuous power supply. Hot swappable batteries. The HotSwap MBP (Maintenance By-Pass) module allows the UPS to be replaced without interrupting the power supply.

- ▶ Long backup times. 1 to 4 EXB battery units can be added to the Evolution S (from 1250 to 3000).

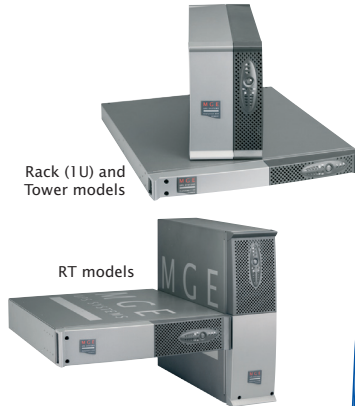


Minimum total cost of ownership

- ▶ Line-interactive HF technology: the best price/performance ratio.
- ▶ No additional cost: rack (1U) and RT models are provided with the rail kits.
- ▶ Remote supervision. A wide range of options using the Solution-Pac supplied: SNMP and HTML and relay outputs.



Network Management Card and MGE EPM Supervisor



Rack (1U) and Tower models
RT models

Flexibility

Evolution has unmatched Flexibility.

- ▶ Format. Evolution is available in tower format, rack (1U) format, RT2U convertible rack/tower version (optimized for rack mounting) or RT3U (for tower or short-depth racks).
- ▶ Connections. With FlexPDU and HotSwap MBP the Evolution provide a variety of receptacle options. They can be installed as required behind, on the side or on top of the unit.
- ▶ Compatible with high power factor loads. The Evolution S are rated for 0.9 total power factor (1250 VA/1150 W, 1750 VA/1600 W, 2500 VA/2250 W and 2800 VA/2700 W)
- ▶ Interfaces. USB + serial + remote start/stop + slot for optional communications card.



Protection for 1 to 15 servers, ideal for:

- ▶ network devices
- ▶ rack-mounted servers
- ▶ conventional rack-mounted or tower servers
- ▶ network storage systems



With its extremely compact size, Evolution is the ideal solution for making the best use of the available space.



With its many installation options, the Evolution is easily integrated into any environment: offices, point-of-sale terminals, 19" racks, etc.

MGE

Office Protection Systems

E N E R G I Z E Y O U R E N T E R P R I S E



Evolution 850 VA

- 1 Full user interface:
 - ON/OFF button for UPS and outlets
 - Load protected/ not protected LED
 - Utilized power level/Battery charge level
 - Status of switchable outlets
- 2 Panel for replacing batteries without interrupting the output.
- 3 1 USB port + 1 serial port + remote ON/OFF and emergency stop inputs.
- 4 EXB battery unit connector.
- 5 EXB units recognized automatically.
- 6 (4) 5-15R, including 2 programmable receptacles.
- 7 (6) 5-15/20R, including 2 programmable receptacles.
- 8 Communications card slot.



Evolution S 1250VA

MGE Customer Service & Support

2 year guarantee, including batteries

Standard exchange of product in case of failure, including batteries.

Associated services:

Warranty+: 3 or 5 year extended guarantee.

Communications software and hardware

Solution-Pac software on CD-ROM with each UPS

For monitoring the server(s) powered by the UPS and for local and remote UPS supervision.

Network Management Card (NMC) 2006

For connecting the UPS to an Ethernet 10/100 network, raising SNMP alarms and supervising the UPS using a simple browser interface.

NMC environmental sensor

Monitoring the temperature, humidity and 2 relay contacts via SNMP or HTML.

Enterprise Power Manager supervisor

For comprehensive management of a set of UPSs using a Windows PC.

Management-Pac 2 suite

NMS integration kit: HP OpenView, IBM Tivoli Netview, CA Unicenter, etc.

Status Card ■ Contacts/Serial

Add a second relay contacts or Serial port to the UPS.

UPS Control remote display

To monitor the UPS status up to 80 feet from the unit.

Technical characteristics

Model	Evolution					Evolution S			
	650	850	1150	1550	2000	1250	1750	2500	3000
Rating	650 VA 420 W	850 VA 600 W	1150 VA 770 W	1440 VA 1100 W	1920 VA 1600 W	1250 VA 1150 W	1750 VA 1600 W	2500 VA 2250 W	2880 VA 2700 W
Format	Tower or 1U Rack					RT2U (tower / rack 2U)			
Electrical characteristics									
Technology: Line-Interactive High Frequency (Booster + Fader)									
Input voltage and frequency ranges without using batteries: 89V-151V (adjustable to 80V-153V) 56.5 to 70 Hz (60 Hz system) ⁽¹⁾ / 47 to 70 Hz (50 Hz system)									
Output voltage and frequency: 120V (+6/-10%) ⁽²⁾ / 50/60 Hz +/- 0.1%									
Connections									
Input	5-15P		5-20P		5-15P	5-20P	L5-30P		
Output	(4) 5-15R		(6) 5-15/20R		(6) 5-15R	(6) 5-15/20R	(6) 5-15/20R + (1) L5-30R		
Remotely, individually controlled receptacles	(2) 5-15R		(2) 5-15/20R		(2) 5-15R	(2) 5-15/20R			

Batteries										
Typical backup times for 50 and 70% load (in minutes) ⁽³⁾										
Standard UPS	9/6	16/7	14/7	14/8	14/7	20/14	14/9	17/11	15/10	
Rack mount (1U)	-					105/60	60/36	85/55	60/42	
Rack/Tower Versatile (2U)	-					300/200	180/115	290/200	210/135	
Battery management	Automatic weekly test (period adjustable), automatic recognition of external battery units => continuous maximization of backup time + deep discharge protection									
Interfaces										
Communication ports	1 USB port + 1 RS232 serial port and relay contacts ⁽²⁾ + 1 mini terminal block for remote ON/OFF and Remote Power Off									
Communications card slot	1 slot for NMC Minislot 2006 card or NMC ModBus/JBus or MC Contacts/Serial									
Operating conditions, standards and approvals										
Operating temperature	32° to 95° F					32° to 104° F				
Noise level	< 40dba					< 45 dBA		< 50 dBA		
Performance - Safety - EMC	IEC/EN 62040-1-1 (Safety), IEC/EN 62040-2 EN 50091-2 class A (EMC), IEC/EN 62040-3 (Performance), IEC/EN 61000-4-2, 61000-4-3, 61000-4-4; 61000-4-5, 61000-4-6, 61000-4-8 (EMI)									
Approvals	UL, cUL, CE, CB report									
Dimensions (WxHxD) in inches / Weight in lbs										
Dimensions of the Tower	9.2" x 5.8" x 16.5"		9.2" x 5.8" x 19.4"		3.4"(2U) x 17.3" x 20"			3.4"(2U) x 17.3" x 25" 5.1"(3U) x 17.3" x 19.1"		
Dimensions of the Rack	1.7"(1U) x 17.2" x 14.4"	1.7"(1U) x 17.2" x 20.2"	1.7"(1U) x 17.2" x 21.9"	56.7 lbs			53.6 lbs	58.6 lbs	74.5 lbs	74.5 lbs
Tower Weights	18.5 lbs	23.9 lbs	27.6 lbs	36.4 lbs	56.7 lbs			53.6 lbs	58.6 lbs	74.5 lbs
Rack Weights	22.3 lbs	35.5 lbs	36.6 lbs	44.1 lbs	56.7 lbs			53.6 lbs	58.6 lbs	74.5 lbs
Dimensions of EXB	-					3.4"(2U) x 17.3" x 20"			5.1"(3U) x 17.3" x 19.1"	
EXB Weights	-					67 lbs			91.9 lbs	

1: Up to 40 Hz in low-sensitivity mode (programmable using Personal Solution-Pac software.
2: USB and RS232 ports cannot be used simultaneously. 3: Runtime at 0.7 Power factor.

Part Numbers

Evolution	650	850	1150	1550	2000	S 1250	S 1750	S 2500	S 3000	S 3000
					RT2U	RT2U	RT2U	RT2U	RT3U	RT2U
Tower	81700	81703	81705	81709	-	-	-	-	-	-
Rack 1U	81701	81704	81706	81710	-	-	-	-	-	-
Versatile (2U) Twr/Rck	-	-	-	-	81712	81708	81711	81714	81716	81715
EXB Models	-	-	-	-	-	81713		81717 (RT2U) or 81707 (RT3U)		

MGE Office Protection Systems

North & South America Headquarters
13 Whatney, Suite 101 ■ Irvine, CA 92618
tel (800) 279-7776 ■ fax (949) 268-2847

www.mgeops.com
Evo
revision 201
effective October 2007

