

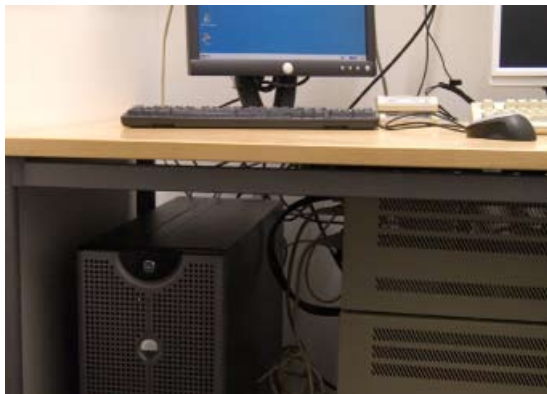
Eaton 5115 UPS

500 – 1400 VA



Advanced power protection for:

- Small servers
- Network devices
- Storage systems



Line interactive UPS

Highest power performance

- The 5115 UPS protects critical equipment from five of nine typical power problems: power failures, sags, surges, under-voltage and overvoltage.
- The UPS guarantees pure sine wave output during battery operations. The connected load continues to receive high quality electrical wave and operates smoothly event during power outages.

Unmatched reliability

- Buck and Boost operation corrects a wide range of input voltage variations through continuous regulation, without the use of batteries, and ensures consistent input voltage to the loads protected
- ABM® technology uses an innovative three-stage charging technique, that only recharges the battery when necessary, so the battery experiences less corrosion and service life is prolonged by up to 50%
- Batteries can be hot-swapped without ever having to shut down connected equipment..

Outstanding versatility

- Incorporating both serial and USB communications ports, the Eaton 5115 is well-equipped to meet today's communication requirements
- The 5115 comes complete with the Eaton Software Suite CD, where wizard guides you through the installation process and helps you choose components that are compatible with your systems to make the installation of the shutdown software as easy as possible.
- LanSafe® shutdown software monitors the UPS and in the event of an extended power failure shuts down the entire network in predefined order.

EATON

Powering Business Worldwide

Eaton 5115 UPS



1. LED user interface
2. Panel for replacing batteries
3. 1 USB port + 1 serial port
4. Dataline (network) protection
5. 4 to 6 IEC 10A sockets



TECHNICAL SPECIFICATION

Rating	500 VA	750 VA	1000 VA	1400 VA
Part number	05146549-5591	05146555-5591	05146561-5591	05146567-5591
Capacity (VA/watts)	500/320	750/500	1000/670	1400/950
Dimensions WxDxH (mm)	150x268x185	150x333x185	150x333x185	150x388x185
Weight (kg)	8	12	13	17
Input connection	IEC320/10A	IEC320/10A	IEC320/10A	IEC320/10A
Output connection	4xIEC320/10A	4xIEC320/10A	6xIEC320/10A	6xIEC320/10A
Typical runtime (full load)	5 min	6 min	5 min	5 min
(half load)	15 min	17 min	15 min	15 min

Operational

Nominal input voltage (Vac)	220/230/240 Vac
Input voltage range	184-276 VAC(± 20% of nominal)
Operating frequency	50/60 Hz auto sensing
Input power factor	Same as load
Nominal output voltage	220/230/240 Vac
Output voltage regulation	-10%/+6% of selected nominal voltage
Overload capacity	110% 3 min; 150% 10 cycles
Efficiency	95%

User interface

LED	Four LEDs; UPS on, UPS on battery, overload, alarm
Standard communication ports	RS232 & USB
Optional	External SNMP adapter

Environmental

Operating temperature	0°C - +40°C
Storage temperature	-15°C - +55°C
Altitude	<3000 m
Audible noise at 1 metre	<40 dB

Certification

Markings	CE
Safety	IEC 62040-1-1, UL 1778
EMC	IEC 62040-2

EATON 5115 RUNTIMES FOR TYPICAL APPLICATIONS

Load VA / W	500 VA	750 VA	1000 VA	1400 VA
200 VA / 128 W	17	38	41	58
300 VA / 192 W	11	27	28	41
500 VA / 320 W	5	14	15	28
600 VA / 400 W		9	10	19
750 VA / 500 W		6	8	14
900 VA / 600 W			6	10
1000 VA / 670 W			5	8
1200 VA / 800 W				6
1400 VA / 950 W				5

