

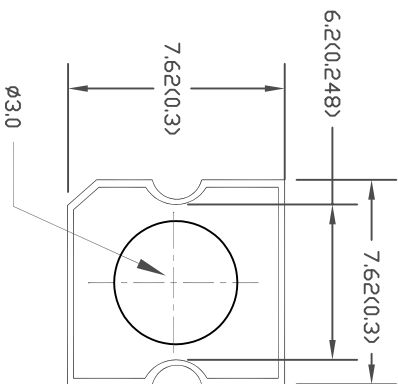
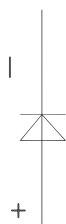
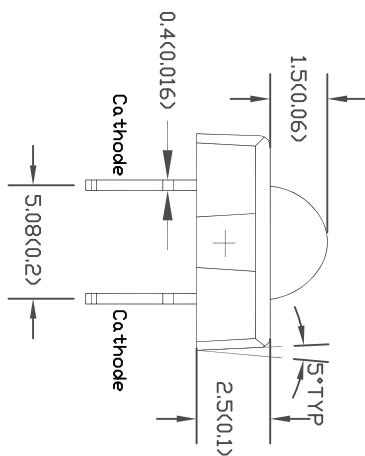
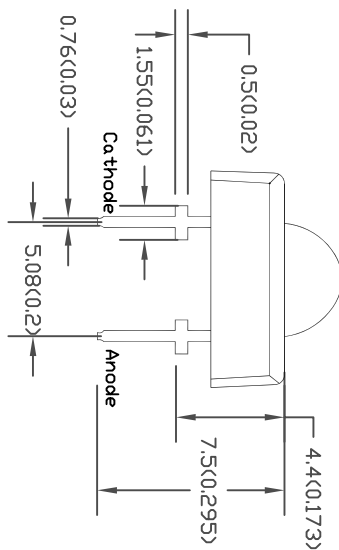


SPC
TECHNOLOGY

ALL RIGHTS RESERVED. NO PORTION OF THIS PUBLICATION, WHETHER IN WHOLE OR IN PART CAN BE REPRODUCED WITHOUT THE EXPRESS WRITTEN CONSENT OF SPC TECHNOLOGY.
SPC-F005JLVG

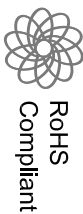
REVISONS		DOC. NO.	SPC-F005	*	Effective	7/8/02	*	Doc No	1398
DCP #	REV	DESCRIPTION	DATE	CHECKD	DATE	APPRVI	DATE		
XX	XX	XXXX	11-09-08	XXXX	11-09-08	XXXX	11-09-08		
XXXX	XXXX		11-09-08	XXXX	11-09-08	XXXX	11-09-08		

Package Dimension:



- Notes:
1. All dimensions are in millimeters (inches).
 2. Tolerance is $\pm 0.25\text{mm}$ ($\pm 0.010''$) unless otherwise noted.
 3. Protruded resin under flange is 1.0mm ($0.04''$) max.
 4. Lead spacing is measured where the leads emerge from the package.
 5. Specifications are subject to change without notice.
 6. This data-sheet only valid for six months.

Part No	Chip Material	Lens Color	Source Color
ETG-PMNS25-70	InGan	Water Clear	True Green



DISCLAIMER:
ALL STATEMENTS AND TECHNICAL INFORMATION CONTAINED HEREIN ARE BASED UPON INFORMATION AND/OR TESTS WE BELIEVE TO BE ACCURATE AND RELIABLE. SINCE CONDITIONS OF USE ARE BEYOND OUR CONTROL, THE USER SHALL DETERMINE THE SUITABILITY OF THE PRODUCT FOR THE INTENDED USE AND ASSUME ALL RISK AND LIABILITY WHATSOEVER IN CONNECTION THEREWITH.

TOLERANCES:

UNLESS OTHERWISE SPECIFIED, DIMENSIONS ARE FOR REFERENCE PURPOSES ONLY.

DRAWN BY:	DATE:
XXXX	11-09-08
CHECKED BY:	DATE:
XXXX	11-09-08
APPROVED BY:	DATE:
XXXX	11-09-08

DRAWING TITLE:

Multi - Color LED

SIZE	DWG. NO.	ELECTRONIC FILE	REV
A	MC24169	02P5893	XX
SCALE:	NTS	U.D.M.:	INCHES [mm]
SHEET:	1	OF	1



SPC
TECHNOLOGY

ALL RIGHTS RESERVED. NO PORTION OF THIS PUBLICATION, WHETHER IN WHOLE OR IN PART CAN BE REPRODUCED WITHOUT THE EXPRESS WRITTEN CONSENT OF SPC TECHNOLOGY.

SPC-F005.DWG

REVISEIONS		DOC. NO. SPC-F005	* Effective: 7/6/02	* DCP No: 1398				
DCP #	REV	DESCRIPTION	DRAWN	DATE	CHECKD	DATE	APPRD	DATE
XX	XX	XXXX	XXXX	23-09-08	XXXX	23-09-08	XXXX	23-09-08
XXXX	XXXX		XXXX	23-09-08	XXXX	23-09-08	XXXX	23-09-08

Absolute Maximum Ratings

(Ta=25°C)

Parameter	Max.	Unit
Power Dissipation	120	mW
Peak Forward Current (1/10 Duty Cycle, 0.1ms Pulse Width)	100	mA
Continuous Forward Current	30	mA
Derating Linear From 50°C	0.4	mA/°C
Reverse Voltage	5	V
Operating Temperature Range	-25°C to +80°C	
Storage Temperature Range	-40°C to +100°C	
Lead Soldering Temperature [4mm(.157") From Body]	260°C for 5 Seconds	

Electro-optical Characteristics

(Ta=25°C)

Parameter	Symbol	Min.	Typ.	Max.	Unit	Test Condition
Luminous Intensity	Iv	---	2400	---	mcd	If=20mA (Note 1)
Viewing Angle	2θ1/2	---	70	---	Deg	(Note 2)
Peak Emission Wavelength	λp	---	523	---	nm	If=20mA
Dominant Wavelength	λd	---	525	---	nm	If=20mA (Note 3)
Spectral Line Half-Width	*Cλ	---	25	---	nm	If=20mA
Forward Voltage	Vf	---	3.2	4.0	V	If=20mA
Reverse Current	Ir	---	---	100	µA	Vr=5V

Notes:

- Luminous intensity is measured with a light sensor and filter combination that approximates the CIE eye-response curve.
- θ1/2 is the off-axis angle at which the luminous intensity is half the axial luminous intensity
- The dominant wavelength (λd) is derived from the CIE Chromaticity diagram and represents the single wavelength which defines the color of the device.



RoHS
Compliant

TOLERANCES:

UNLESS OTHERWISE SPECIFIED, DIMENSIONS ARE FOR REFERENCE PURPOSES ONLY.

DRAWN BY: XXXX	DATE: 23-09-08	DRAWING TITLE: Multi Color LED	
CHECKED BY: XXXX	DATE: 23-09-08	SIZE: A	DWG. NO.: MC24169
APPROVED BY: XXXX	DATE: 23-09-08	SCALE: NTS	U.O.M.: INCHES [mm]
		ELECTRONIC FILE: 02P5893	REV: XX
		SHEET: 1	OF 1

DISCLAIMER:
ALL STATEMENTS AND TECHNICAL INFORMATION CONTAINED HEREIN ARE BASED UPON INFORMATION AND/OR TESTS WE BELIEVE TO BE ACCURATE AND RELIABLE. SINCE CONDITIONS OF USE ARE BEYOND OUR CONTROL, THE USER SHALL DETERMINE THE SUITABILITY OF THE PRODUCT FOR THE INTENDED USE AND ASSUME ALL RISK AND LIABILITY WHATSOEVER IN CONNECTION THEREWITH.



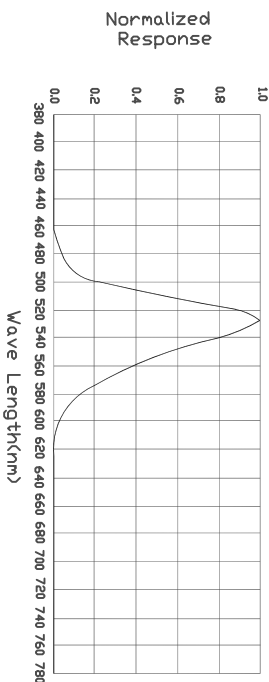
SPC TECHNOLOGY

ALL RIGHTS RESERVED. NO PORTION OF THIS PUBLICATION, WHETHER IN WHOLE OR IN PART CAN BE REPRODUCED WITHOUT THE EXPRESS WRITTEN CONSENT OF SPC TECHNOLOGY.
SPC-F005.DWG

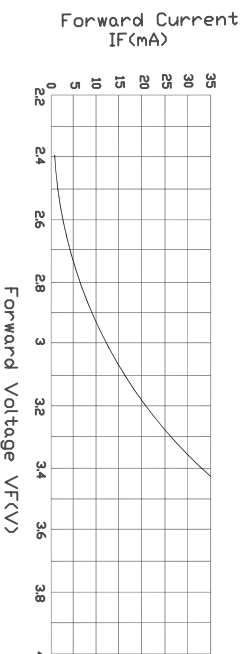
REVISIONS		DOC. NO. SPC-F005	* Effective: 7/8/02	* DCP No: 1398				
DCP #	REV	DESCRIPTION	DRAWN	DATE	CHECKD	DATE	APPRD	DATE
XX	XX	XXXX	XXXX	23-09-08	XXXX	23-09-08	XXXX	23-09-08
XXXX	XXXX		XXXX	23-09-08	XXXX	23-09-08	XXXX	23-09-08

Typical Electrical / Optical Characteristics Curves
(25°C *Ambient Temperature Unless Otherwise Noted)

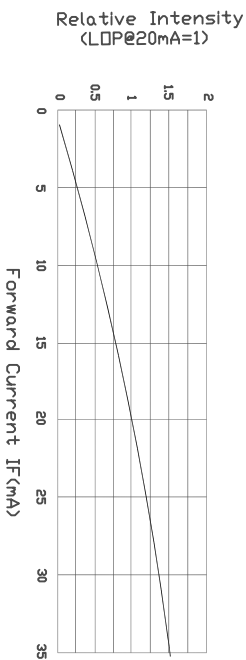
Spectral Radiance (Peak @ 525nm)



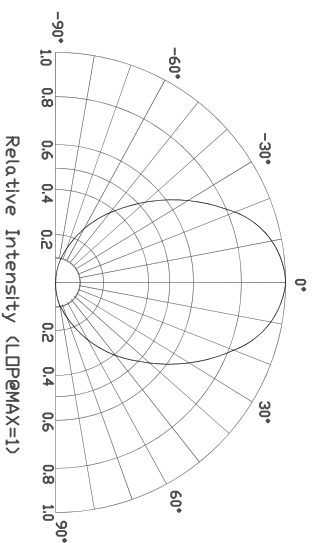
Forward Current vs Forward Voltage



Relative Luminous Intensity vs Forward Current



Beam Pattern



DISCLAIMER:
ALL STATEMENTS AND TECHNICAL INFORMATION CONTAINED HEREIN ARE BASED UPON INFORMATION AND/OR TESTS WE BELIEVE TO BE ACCURATE AND RELIABLE. SINCE CONDITIONS OF USE ARE BEYOND OUR CONTROL, THE USER SHALL DETERMINE THE SUITABILITY OF THE PRODUCT FOR THE INTENDED USE AND ASSUME ALL RISK AND LIABILITY WHATSOEVER IN CONNECTION THEREWITH.

TOLERANCES:
UNLESS OTHERWISE SPECIFIED, DIMENSIONS ARE FOR REFERENCE PURPOSES ONLY.

DRAWN BY:	DATE:
XXXX	23-09-08
CHECKED BY:	DATE:
XXXX	23-09-08
APPROVED BY:	DATE:
XXXX	23-09-08

DRAWING TITLE:		Multi Color LED	
SIZE	DWG. NO.	ELECTRONIC FILE	REV
A	MC24169	02P5893	XX
SCALE:	NTS	U.O.M.: INCHES [mm]	SHEET: 1 OF 1