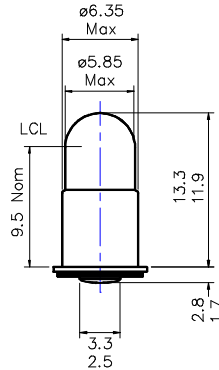


Type	Size	Description	Part No.
Incandescent	T6 (T-1¾)	Midget Flanged Lamp	(see table)



Drawing not to scale  
All dimensions in mm

### PHOTOMETRY DATA

Farnell Part No.	SLI P/N	Lamp Rating	Test Volts	Current (mA)			Light Output (Lm)			Fil Shape	Life (Hrs)
				Min	Nom	Max	Min	Nom	Max		
328674	723	6V 0.6W	6	90	100	110	1.9	2.5	3.1	C-2R	5000
653627	328	6V 1.2W	6	180	200	220	—	7.5	—	C-2R	1000
328686	724	6V 1.2W	6	180	200	220	6.0	7.5	8.5	C-2R	1000
653639	394	12V 0.48W	12	36	40	44	1.1	1.5	1.9	C-2V	10000
328704	740	12V 1.08W	12	80	90	100	3.0	4.0	4.5	C-2V	20000
328698	725	12V 1.2W	12	90	100	110	4.0	5.0	6.0	C-2V	5000
328716	733	14V 0.52W	14	32	37	42	1.2	1.6	2.0	C-2F	5000
653640	382	14V 1.12W	14	72	80	88	2.8	3.8	4.8	C-2F	15000
328728	330	14V 1.12W	14	72	80	88	4.7	6.3	7.9	C-2F	1000
620518	1116	28V 0.67W	28	21	24	27	1.3	1.7	2.1	C-2F	4000
328730	727	28V 1.12W	28	36	40	44	3.4	4.5	5.6	C-2F	4000
653676	327	28V 1.12W	28	36	40	44	3.2	4.3	5.4	C-2F	4000
653664	387	28V 1.12W	28	36	40	44	2.8	3.8	4.8	C-2F	7000
653652	385	28V 1.12W	28	36	40	44	1.9	2.5	3.1	C-2F	20000
328741	736	28V 1.23W	28	40	44	48	3.5	4.0	4.5	C-2F	10000
328753	729	28V 2.24W	28	72	80	88	8	10	12	C-2F	2000
328765	730	48V 1.2W	48	22	25	28	3.0	4.0	5.0	C-2F	2500
328777	777	60V 1.2W	60	18	20	22	1.6	2.2	2.8	CC-2F	5000

### NOTES:

- 1) SX6s/8 midget flanged cap in accordance with IEC 61-1, (BS EN 60061-1), sheet 7004-61-x.
- 2) Metal base to be durably marked with rating and trademark.