



SPC
TECHNOLOGY

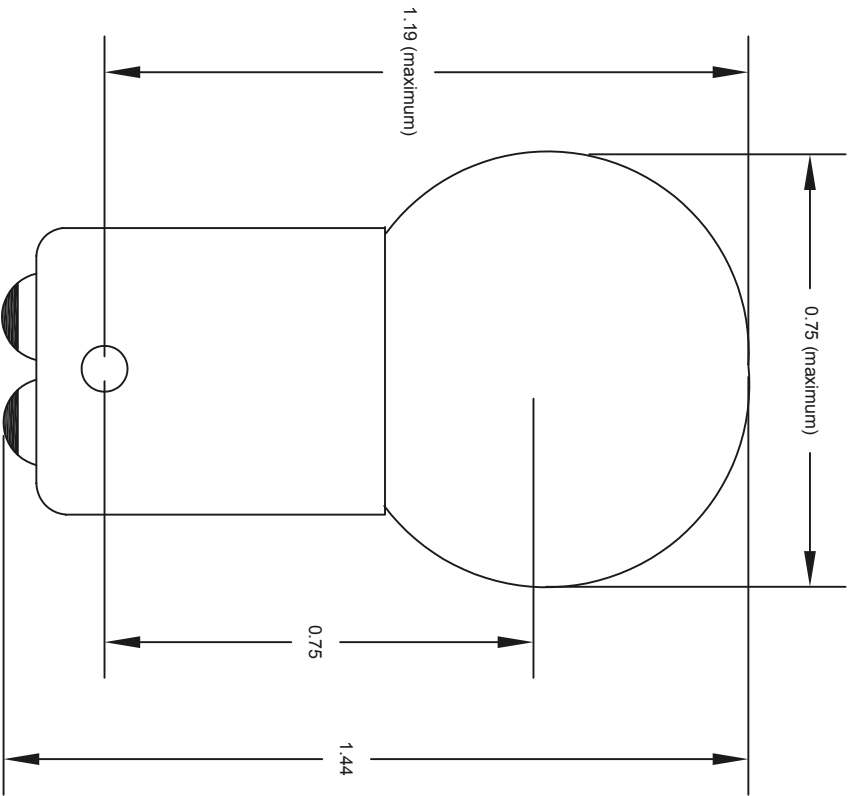
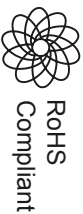
ALL RIGHTS RESERVED. NO PORTION OF THIS PUBLICATION, WHETHER IN WHOLE OR IN PART CAN BE REPRODUCED WITHOUT THE EXPRESS WRITTEN CONSENT OF SPC TECHNOLOGY.

SPC-F005.DWG

REVISIONS

| DCP # | REV | DESCRIPTION | DRAWN | DATE | CHECKD | DATE | APPRVD | DATE |
|-------|-----|-------------|-------|----------|--------|----------|--------|----------|
| | | | JAG | 01-08-10 | MRD | 05-08-10 | XXX | 16-08-10 |

DOC. NO. SPC-F005 * Effective: 7/8/02 * DCP No: 1398



Specifications

| Volts | Amps | Watts | MSCP | Filament | Life-HRS |
|-------|------|-------|------|----------|----------|
| 13 | 0.58 | 7.54 | 6 | C-2R | 750 |

Part Number Table

| Description | Part Number |
|--------------------------------------|-------------|
| G-6 Double Contact Bayonet Base Lamp | 90 |

Dimensions : Inches

TOLERANCES:

UNLESS OTHERWISE SPECIFIED, DIMENSIONS ARE FOR REFERENCE PURPOSES ONLY.

DISCLAIMER:
ALL STATEMENTS AND TECHNICAL INFORMATION CONTAINED HEREIN ARE BASED UPON INFORMATION AND/OR TESTS WE BELIEVE TO BE ACCURATE AND RELIABLE. SINCE CONDITIONS OF USE ARE BEYOND OUR CONTROL, THE USER SHALL DETERMINE THE SUITABILITY OF THE PRODUCT FOR THE INTENDED USE AND ASSUME ALL RISK AND LIABILITY WHATSOEVER IN CONNECTION THEREWITH.

DRAWN BY:

JAG

DATE:

01-08-10

CHECKED BY:

MRD

DATE:

05-08-10

APPROVED BY:

XXX

DATE:

16-08-10

DRAWING TITLE:

G-6 Double Contact Bayonet Base Lamp

SIZE DWG. NO.

XXX

ELECTRONIC FILE

96F7943

SCALE: NTS

U.O.M.: INCHES [mm]

SHEET: 1 OF 1

REV A