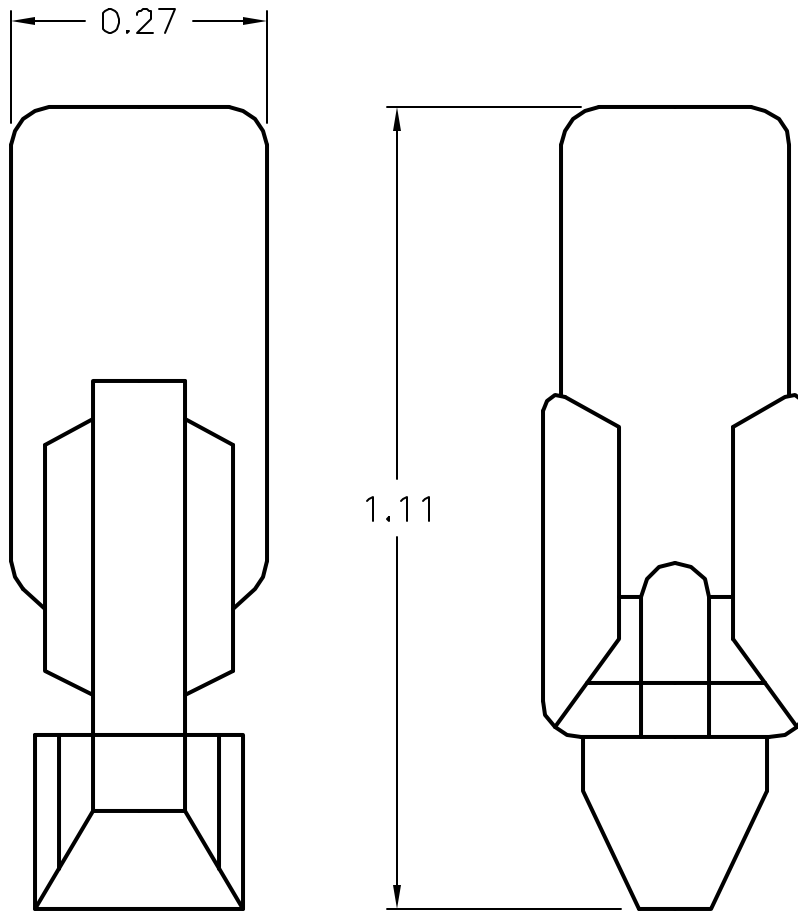


ALL RIGHTS RESERVED. NO PORTION OF THIS PUBLICATION, WHETHER IN WHOLE OR IN PART CAN BE REPRODUCED WITHOUT THE EXPRESS WRITTEN CONSENT OF SPC TECHNOLOGY.

REVISIONS			DOC. NO. SPC-F004 * Effective: 12/21/98 * DCP No: 680						
DCP #	REV	DESCRIPTION	DRAWN	DATE	CHECKD	DATE	APPRVD	DATE	
95	B	REDRAW	SAS	7/8/99	JC	8/5/99	JC	8/5/99	
948	C	CHG TO TABULAR SPEC	HYD	8/5/00	JC	10/24/00	JC	10/24/00	



SPC TYPE NO.	VOLTS	AMPS	WATTS	EFC	FILAMENT	LIFE (HOURS)
6PSB	6	0.14	0.84	550	C-2F	20000
12PSB	12	0.17	2.04	2000	C-2F	12000
24PSB	24	0.073	1.752	3000	C-2F	10000
28PSB	28	0.04	1.12	1600	C-2F	5000
48PSB	48	0.05	2.4	1800	C-7A	5000
60PSB	60	0.05	3	73	C-7A	7500
120PSB	120	0.025	3	1200	CC-7A	7500

SPC-F004-DWG

**DISCLAIMER:**  
ALL STATEMENTS AND TECHNICAL INFORMATION CONTAINED HEREIN ARE BASED UPON INFORMATION AND/OR TESTS WE BELIEVE TO BE ACCURATE AND RELIABLE. SINCE CONDITIONS OF USE ARE BEYOND OUR CONTROL, THE USER SHALL DETERMINE THE SUITABILITY OF THE PRODUCT FOR THE INTENDED USE AND ASSUME ALL RISK AND LIABILITY WHATSOEVER IN CONNECTION THEREWITH.



**SPC TECHNOLOGY**

UNLESS OTHERWISE SPECIFIED, DIMENSIONS ARE FOR REFERENCE PURPOSES ONLY.	DRAWN BY:	DATE:	DRAWING TITLE:			
	J.C.	1/29/92	T-2 TELEPHONE SLIDE #5 LAMP			
	CHECKED BY:	DATE:	SIZE	DWG. NO.	ELECTRONIC FILE	REV
			A	TA-260	TA-260.DWG	C
	APPROVED BY:	DATE:	SCALE:	U.O.M.:	SHEET:	
			NTS	INCHES	1 OF 1	