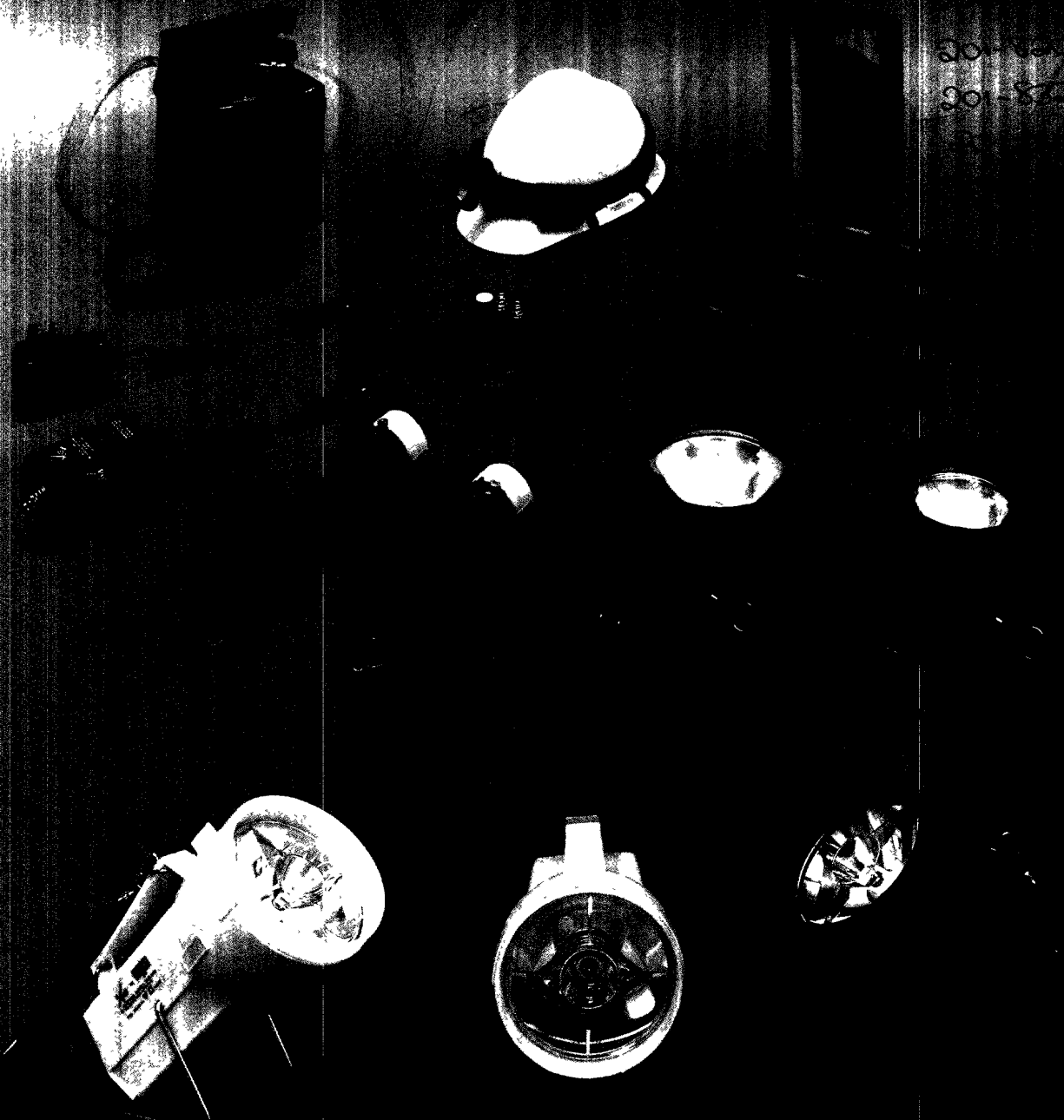


GREEN PRODUCT  
AWARD  
MARCH 1990

201-807

**cel**

**PORTABLE LIGHTING**



301-807  
301-807

**For Professionals who Lead the Way NITECH LIMITED**

## X-CELL RECHARGEABLE TORCHES

All X-Cell Rechargeable products are powered by the X-Cell Battery system which has received the top government sponsored "Green Product Award" in March 1990 — just one X-Cell replaces 2.5 tons of conventional dry batteries . . . saves our environment . . . saves your money!



- ½ mile halogen beam
- Up to 8 hours light
- Robust/NATO coded
- c/w X-Cell "Green" battery and charging leads
- Charges *direct* from both mains and vehicle with no separate chargers/adaptors required
- Cost-saving — up to 3,000 recharge cycles
- Cannot be overcharged or damaged if left in discharged state
- Spot/Flood adjustment
- Floats beam up

Model	Operating Time	Weight	Recharge Time	Strap/Stand	Dimensions (all models)	Colour
2500H	4 hours	1 kg	12/14 hours	No	210mm × 124mm × 135mm	Standard colour Yellow with White lens rim
550H	4 hours	1.1 kg	12/14 hours	Yes		Khaki with Black lens rim available on request
800H	8 hours	1.2 kg	16/18 hours	Yes		Other colours available to special order

### BULBS

N300 standard fitted halogen bulb — 50,000 candlepower, 0.3 amp, 500 hours life

N500 doubles power output — 100,000 candlepower, 0.5 amp, 500 hours life

N1000 **Specialist Application.** The ultimate halogen bulb (High temperature bulb holder also available to allow an amazing 70 minutes continuous use in 800H) — 400,000 candlepower, 1.8 amp, 50 hours life

**ACCESSORIES** — Wall bracket, Charging lead c/w cigar lighter plug

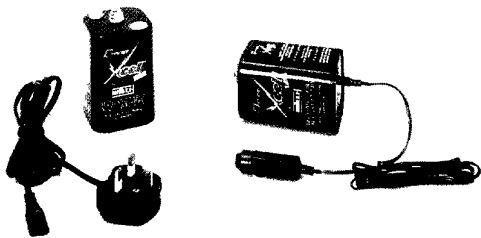
## FLUORESCENT RECHARGEABLE LANTERNS



- 8" high-efficiency 6 watt fluorescent tube
- Wide shadow-free light
- c/w X-Cell "Green" battery and charging leads
- Charges *direct* from both mains and vehicle with no separate chargers/adaptors required
- Polycarbonate lens
- Lightweight and weatherproof
- Integral keyhole for semi-permanent mounting

Model	Battery	Operating Time	Weight	Recharge Time	Dimensions (all models)	Colours
F-1	Plus	2 hours	1 kg	12/14 hours	240mm × 165mm × 28mm	Khaki or Black
F-2	Major	4 hours	1.1 kg	16/18 hours		

## X-CELL RECHARGEABLE BATTERIES

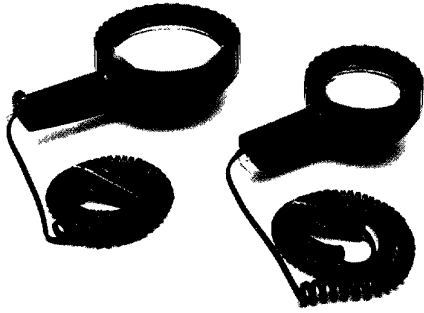


- Instantly converts 6 volt equipment to economical, environmentally friendly operation
- The only *complete* rechargeable replacement for 6 volt (PJ996) lantern battery
- Totally maintenance free — will not leak or corrode
- Up to 3,000 recharge cycles
- c/w charging leads
- Charges *direct* from both mains and vehicle — no separate chargers/adaptors required
- Retains charge for over one year
- Cannot be overcharged or damaged if left in discharged state
- Protected against short circuit
- Operates from -40°C to +60°C
- Negligible running cost — less than 0.5p per charge

And remember the **GREEN PRODUCT AWARD!** — by using this battery you are helping to save the environment

Model	Discharge Time in standard 6 volt handlamp	Recharge Time	Weight	Dimensions	Maximum Continuous Current
Plus	3 hours	12/14 hours	585 gms	97mm × 60mm × 60mm	4-5 amps
Major	4.5 hours	16/18 hours	655 gms	97mm × 60mm × 60mm	4-5 amps

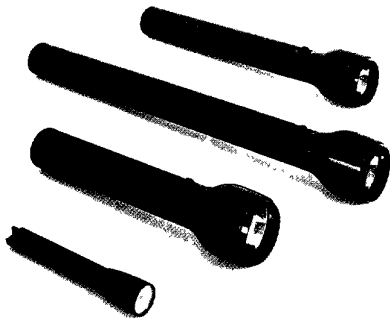
## QUARTZ HALOGEN SEARCH-LITES



- Illuminates in excess of 1 mile
- 5 times more powerful than a car headlight
- Low current drain 4½ amps
- Operated direct off 12v vehicle supply or Nitech 12v Shoulder Mounted Power Pack
- c/w 4.5m self-coil cord/cigar plug
- Tough weatherproof case with built-in hanger
- Easily replaceable bulb
- 24 volt version available on request

Model	Voltage	Bulb	Candlepower	Weight	Dimensions
SL1	12v	H3/55w	300 000	415 gms	210mm x 120mm
SL2	12v	H3/55w	500 000	625 gms	270mm x 160mm

## POWER-LITES



- Professional tough high-grade anodised aluminium Torches
- Non-slip surface
- Glare-free lens shield
- Polycarbonate lens
- Waterproof/shockproof
- High reliability push-button switch
- Krypton 13 5S pre-focus fitting bulb
- Spare bulb in tail cap
- Halogen bulbs available on request

**Miniature version also available** with rotary head combining spot to flood adjustable beam and on-off switch. Key ring facility in tail cap.

**Belt holsters available** details on request

Model	Weight (with batteries)	Candlepower	Dimensions	Batteries
PL1	115 gms	10,000	145mm x 20mm	2 x AA supplied
PL2	485 gms	30,000	260mm x 33mm	2 x D cell not supplied
PL3	610 gms	50,000	320mm x 33mm	3 x D cell not supplied
PL5	825 gms	70,000	450mm x 33mm	5 x D cell not supplied

## HEADTORCH



- Comfortable, lightweight, extremely durable, waterproof
- Designed for hands free operation
- Swivel lens and spot/flood adjustment
- No trailing wires
- Spare bulb supplied
- 30mm wide adjustable elasticated headband
- Manufactured from polycarbonate and acetal resin
- Optional helmet clips allow attachment to safety helmet
- Supplied complete with carrying pouch

Model	Weight	Batteries (not supplied)	Endurance	Bulb	Light beam
HT1	80 gms	4 x AA	6/7 hours	3.5v/0.2a	up to 80 metres

## 12 VOLT SHOULDER MOUNTED POWER PACK

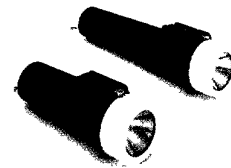


- Industrial performance
- Maintenance free
- Can be used in any position
- c/w mains charging unit
- 1 25" cartridge in-line fuse
- Webbing pack/shoulder strap

Model	Weight	Capacity	Recharge time	Fuse	Dimensions
PP1	6 kg	12v/15ah	18/24 hours	10/15amps	195mm h x 190mm w x 78mm d

For **special applications**, variations of the above Power Pack ie Belt mounted 6 volt, etc are available to special request

## LEGRAND INTRINSIC SAFETY TORCHES

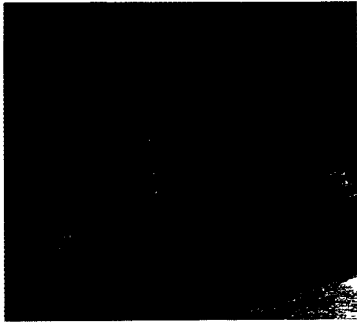


- Highest safety rating CENELEC certification
- Compact and lightweight
- High impact body with polycarbonate lens
- Water resistant
- Chrome internal reflector
- Fluorescent torch head
- Slide switch for morse code
- Allen key to release locking device
- Hanging hook

Model	Bulb	Candlepower	Weight (with batteries)	Dimensions	Batteries (not supplied)
LG2	2.5v/0.3a	10,000	325 gms	180mm x 60mm	2 x D cell
LG3	3.7v/0.3a	15,000	445 gms	240mm x 60mm	3 x D cell

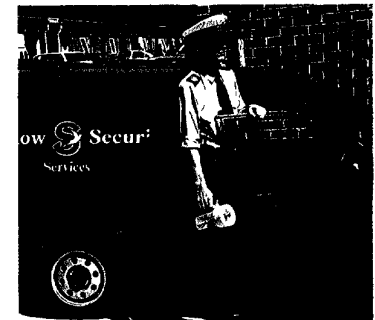
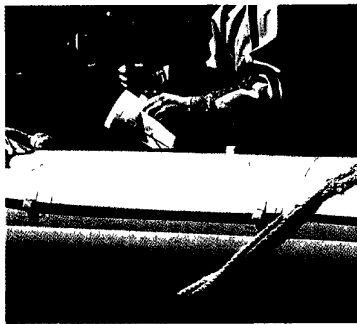
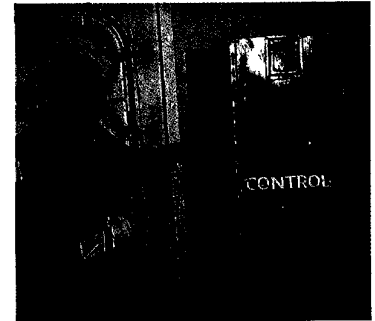
**Performance . . . Durability . . .**

**Reliability . . . Economy . . .**



**Just some of the reasons why:**

- **Ministry of Defence**
- **British Telecom**
- **British Railways**
- **British Airways**
- **Police**
- **Fire**
- **Ambulance**
- **Electricity & Water Plcs**



**and most major organisations  
depend on Nitech**

Available from all major electrical wholesalers  
and other industrial distributors

**Telephone or write for details:**

**NITECH**

**NITECH LIMITED**

Unit 26, Brunel Road,  
Churchfields Trading Estate  
St. Leonards-on-Sea TN38 9RT  
Tel (0424) 852788  
Fax (0424) 851008  
Telex 957264 Nitech G

DEALER STAMP