



DULUX® S ECOLOGIC™

Low Mercury Compact Fluorescent Lamps

- Designed to pass TCLP*
- Less power consumption than incandescent of comparable light output*
- Reduced greenhouse gas and mercury emissions from power generation compared to incandescent
- Two-pin lamps with integral starter
- Available in 2700K, 3000K, 3500K, 4100K & 5000K*
* Not all colors available in all wattages
- Special DULUX S red, green and blue
- 82 CRI
- 10,000-hour average rated life

* Based on OSRAM SYLVANIA TCLP test protocol.

SYLVANIA DULUX® S ECOLOGIC compact fluorescent lamps are designed to meet the Federal Toxic Characteristic Leaching Procedure (TCLP) criteria for classification as non-hazardous waste in most states.**

DULUX S ECOLOGIC lamp sizes provide even light distribution and serve as energy saving replacements for incandescent lamps having comparable light output.

DULUX is a registered trademark of OSRAM GmbH, Germany, used under license by OSRAM SYLVANIA Inc.

** Always check your local and state regulations.

ECOLOGIC™ is a comprehensive program focused on addressing environmental issues at all stages of lamp life.



PRODUCT AVAILABILITY

Lamp Type	Watts	Rated Lumens
CF5DS/800/ECO	5W	230
CF7DS/800/ECO	7W	400
CF9DS/800/ECO	9W	520
CF13DS/800/ECO	13W	720

SYSTEM COMPARISON

Lamp Type	Ballast Factor	System Lumens	System Watts	System Efficacy	Energy Savings
One – 90W Incandescent	1.0	1510	90	16.8	—
Two – 13W DULUX S	0.95	1520	31	49	65%

APPLICATION INFORMATION

Applications

- Down lights
- Wall sconces
- Recessed ceiling fixtures
- Exit signs
- Showcase
- Task lighting

Application Notes

- Preheat lamps designed for magnetic ballast operation
- See minimum lamp starting temperatures on back page

CF018

OSRAM
SYLVANIA

ORDERING AND SPECIFICATION INFORMATION

Package Quantity = 50

Item Number	Ordering Abbreviation	NEMA Generic Designation	Base	Watts	Volts	Amps	Initial Lumens	Mean Lumens	Av. Rated Life (hrs.)*	CRI	Min. Starting Temp. (F/C)**
20325	CF5DS/827/ECO	CF5W/G23/827	G23	5	35	.180	230	210	10,000	82	-22°/-30°
20303	CF5DS/841/ECO	CFT5W/G23/841	G23	5	35	.180	230	210	10,000	82	-22°/-30°
20327	CF7DS/827/ECO	CFT7W/G23/827	G23	7	45	.180	400	360	10,000	82	-4°/-20°
20310	CF7DS/835/ECO	CFT7W/G23/835	G23	7	45	.180	400	360	10,000	82	-4°/-20°
20304	CF7DS/841/ECO	CFT7W/G23/841	G23	7	45	.180	400	360	10,000	82	-4°/-20°
20307	CF7DS/850/ECO	CFT7W/G23/850	G23	7	45	.180	400	360	10,000	82	-4°/-20°
20329	CF9DS/827/ECO	CFT9W/G23/827	G23	9	59	.180	580	520	10,000	82	14°/-10°
20333	CF9DS/835/ECO	CFT9W/G23/835	G23	9	59	.180	580	520	10,000	82	14°/-10°
20305	CF9DS/841/ECO	CFT9W/G23/841	G23	9	59	.180	580	520	10,000	82	14°/-10°
20308	CF9DS/850/ECO	CFT9W/G23/850	G23	9	59	.180	580	520	10,000	82	14°/-10°
20331	CF13DS/827/ECO	CFT13W/GX23/827	GX23	13	59	.180	800	720	10,000	82	14°/-10°
20283	CF13DS/830/ECO	CFT13W/GX23/830	GX23	13	59	.180	800	720	10,000	82	14°/-10°
20335	CF13DS/835/ECO	CFT13W/GX23/835	GX23	13	59	.180	800	720	10,000	82	14°/-10°
20306	CF13DS/841/ECO	CFT13W/GX23/841	GX23	13	59	.180	800	720	10,000	82	14°/-10°
20309	CF13DS/850/ECO	CFT13W/GX23/850	GX23	13	59	.180	800	720	10,000	82	14°/-10°

*Based on 3 hrs per start

**At rated line voltage

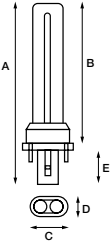
SAMPLE SPECIFICATION

Lamp(s) shall be (a) DULUX S ECOLOGIC (CF5/ECO, CF7/ECO, CF9/ECO, CF13/ECO) low mercury compact fluorescent 2-pin lamp(s). Lamp(s) shall have a correlated color temperature of (2700K, 3000K, 3500K, 4100K or 5000K). Lamp(s) shall comply with the existing Federal TCLP limits.

ORDERING GUIDE

CF	9	DS	/	8	27
Compact Fluorescent	Wattage: 5, 7, 9 and 13 watts	DULUX Single		8 = 82 CRI	27 = 2700K 30 = 3000K 35 = 3500K 41 = 4100K 50 = 5000K

DIMENSIONS

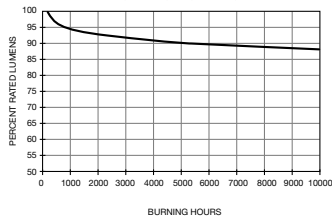


Ordering Abbreviation	(A) MOL [in (mm)]	(B) Max. Base Face to Top of Lamp [in (mm)]	(C) Max. Base Length [in (mm)]	(D) Max. Base Width [in (mm)]	(E) Max. Guide Post Length [in (mm)]
CF5DS	4.21 (107)	3.26 (83.0)	1.28 (32.5)	0.83 (21.0)	0.9 (23)
CF7DS	5.31 (135)	4.41 (112.0)	1.28 (32.5)	0.83 (21.0)	0.9 (23)
CF9DS	6.50 (165)	5.60 (142.0)	1.28 (32.5)	0.83 (21.0)	0.9 (23)
CF13DS	7.09 (180)	6.10 (155.0)	1.28 (32.5)	0.83 (21.0)	0.9 (23)

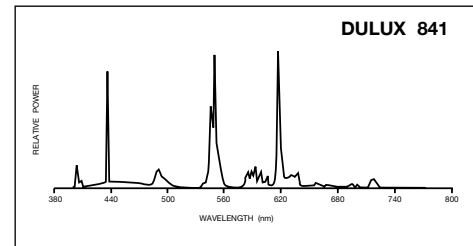
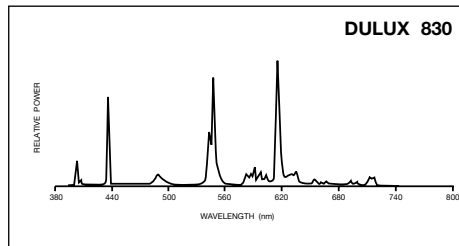
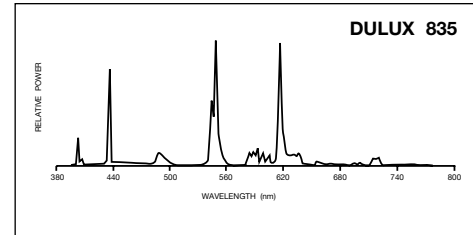
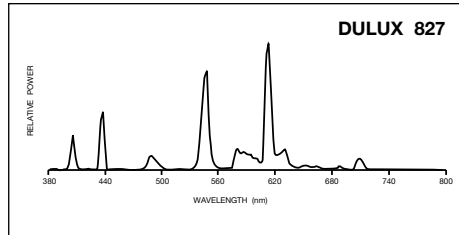
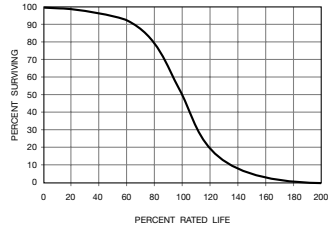
T4 Diameter Tubing = 0.5 inches (12.7mm)

TECHNICAL INFORMATION

Lumen Maintenance Curve
DULUX S, S/E, D, D/E, T & T/E



Typical Fluorescent Lamp Mortality



FOR ORDERS AND GENERAL INFORMATION

OSRAM SYLVANIA National Customer Support Center, 18725 N. Union Street, Westfield, IN 46074

Industrial & Commercial

Phone: 1-800-562-4671
Fax: 1-800-255-5043

National Accounts

Phone: 1-800-762-7191
Fax: 1-800-562-4674

Special Markets

Phone: 1-800-762-7191
Fax: 1-800-762-7192

In Canada: OSRAM SYLVANIA LTD. Headquarters, 2001 Drew Road, Mississauga, ON L5S 1S4

Industrial & Commercial

Phone: 1-800-263-2852
Fax: 1-800-667-6772

Special Markets

Phone: 1-800-265-2852
Fax: 1-800-667-6772

OSRAM
SYLVANIA