

LUM – Technical Information

A recessed spot for orientate illumination.



Tender text

- Professional solution, ready to install, kit version (all components inside the packaging)
- Interior illuminating with comfortable atmosphere. For bathroom lighting, showers, humidity areas, kitchens, locker rooms, gymnasiums...
- False ceiling integration, safety class 3, IP24, IK02
- Mains voltage 230/240V, mains frequency 50–60Hz
- Equipped with Halogen DECOSTAR® DR51 Energy Saver, 35W 12V, color temperature 3100 K, lifetime 5000 h
- Equipped with electronic control gear dimmable: Trailing edge phase control.

Table of contents:

Tender text	1
A) Technical Information	2
1) Housing, Mounting and Accessories	2
2) Electrical Installation	3
3) Optical features	4
4) Control	5
B) Logistic Data	5

Kit Halo Pro Hydro

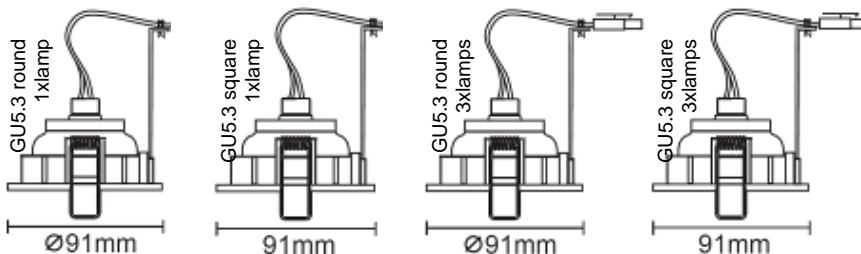


A) Technical Information

1) Housing, Mounting and Accessories

- Lamp is fixed into the spot with a twist & lock system, very easy installation and maintenance
- IP24, for humidity area

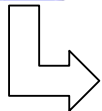
Product name	Kit Halo Pro Hydro R 1x35W White	Kit Halo Pro Hydro R 3x35W White	Kit Halo Pro Hydro R 1x35W Brushed Nickel	Kit Halo Pro Hydro R 3x35W Brushed Nickel	Kit Halo Pro Hydro S 1x35W White	Kit Halo Pro Hydro S 3x35W White	Kit Halo Pro Hydro S 1x35W Brushed Nickel	Kit Halo Pro Hydro S 3x35W Brushed Nickel
Body material	Die casted aluminum							
Color of the luminaire (RAL)	White RAL 9016		Brushed Nickel		White RAL 9016		Brushed Nickel	
Form	Round				Square			
Cover material	Glass cover							
Reflector type	Reflector included into the lamp							
Fixing of the lamp	Twist & lock system							
Adjustable	Yes							
Number of lighting outlets	1	3	1	3	1	3	1	3
Diameter [mm]	91							
Length x width [mm]					91 x 91 (square)			
Type of installation	Recessed, with 2 spring clips on the false ceiling							
Mounting diameter [mm]	80							
Mounting height [mm]	Min. 150 into the false ceiling							
Net weight (with lamp, ECG and cables) [g]	250		250		250		250	



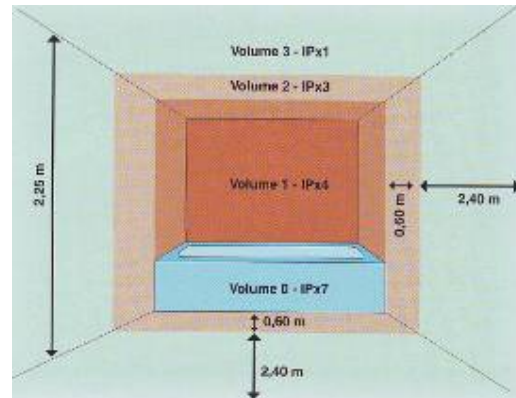
Kit Halo Pro Hydro



Product name	Kit Halo Pro Hydro R 1x35W White	Kit Halo Pro Hydro R 3x35W White	Kit Halo Pro Hydro R 1x35W Brushed Nickel	Kit Halo Pro Hydro R 3x35W Brushed Nickel	Kit Halo Pro Hydro S 1x35W White	Kit Halo Pro Hydro S 3x35W White	Kit Halo Pro Hydro S 1x35W Brushed Nickel	Kit Halo Pro Hydro S 3x35W Brushed Nickel
Protection class	III							
Type of protection (IP code)	IP24							
Protection against ignition and fire	F							
Glow Wire Test according to IEC 695-2-1 (> 650°C)	960 °C							
Shock resistance (IK code)	IK02							
Approval marks	CE – SEMCO - EMC							
Photometric Classification DIN 5040	See “Optical features”							



Kit Halo Pro Hydro can be mounted in volume 1



2) Electrical Installation

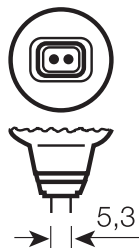
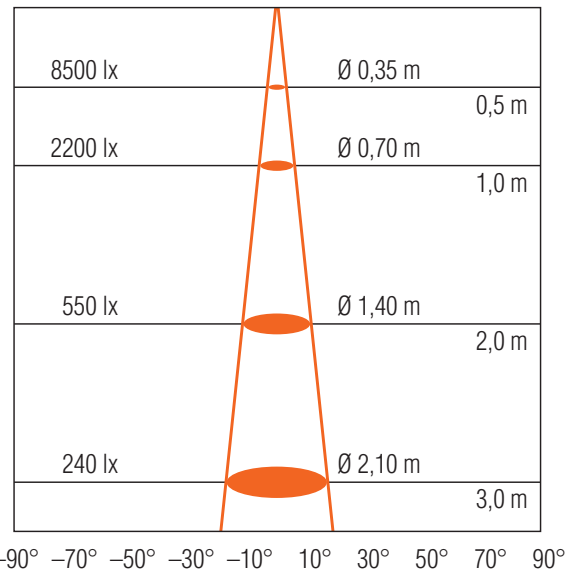
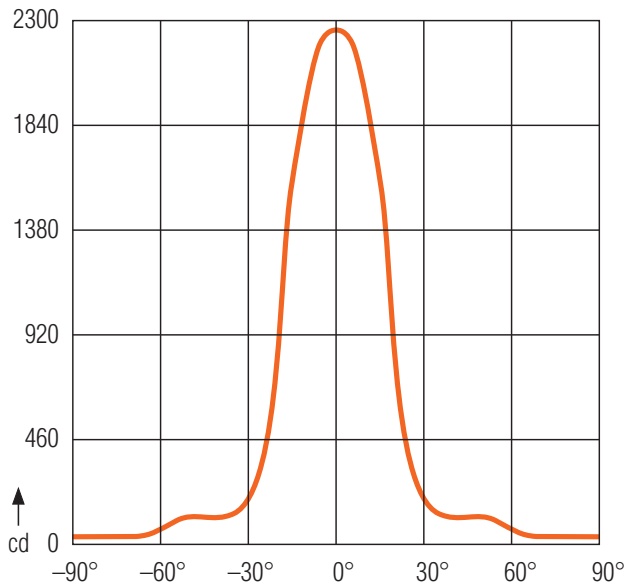
Product name	Kit Halo Pro Hydro R 1x35W White	Kit Halo Pro Hydro R 3x35W White	Kit Halo Pro Hydro R 1x35W Brushed Nickel	Kit Halo Pro Hydro R 3x35W Brushed Nickel	Kit Halo Pro Hydro S 1x35W White	Kit Halo Pro Hydro S 3x35W White	Kit Halo Pro Hydro S 1x35W Brushed Nickel	Kit Halo Pro Hydro S 3x35W Brushed Nickel
Nominal wattage [W]	35	105	35	105	35	105	35	105
Mains voltage [V]	220 to 240							
Rated current [A]	0,24		0,24		0,24		0,24	
Mains frequency [Hz]	50 / 60							
Type of connector	Into the ECG, 2 screws binders connector							

Kit Halo Pro Hydro



3) Optical features

Product name	Kit Halo Pro Hydro R 1x35W White	Kit Halo Pro Hydro R 3x35W White	Kit Halo Pro Hydro R 1x35W Brushed Nickel	Kit Halo Pro Hydro R 3x35W Brushed Nickel	Kit Halo Pro Hydro S 1x35W White	Kit Halo Pro Hydro S 3x35W White	Kit Halo Pro Hydro S 1x35W Brushed Nickel	Kit Halo Pro Hydro S 3x35W Brushed Nickel
Equipped with Lamp	Yes							
Number of lamp	1	3	1	3	1	3	1	3
Lamp type	OSRAM DR 51 ES 35W 12V (48865 ES WFL)							
EAN	4050300 516639							
Base	GU5.3							
Lifespan lamp	5 000 h							
Beam angle [°]	36							
Color temperature [K]	3 100							
Luminous intensity [cd]	2 200							



4) Control

- Electronic control gear

Product name	Kit Halo Pro Hydro R 1x35W White	Kit Halo Pro Hydro R 3x35W White	Kit Halo Pro Hydro R 1x35W Brushed Nickel	Kit Halo Pro Hydro R 3x35W Brushed Nickel	Kit Halo Pro Hydro S 1x35W White	Kit Halo Pro Hydro S 3x35W White	Kit Halo Pro Hydro S 1x35W Brushed Nickel	Kit Halo Pro Hydro S 3x35W Brushed Nickel
Ballast / Control gear	Electronic control gear for 12V lamps							
Permissible sinusoidal operating voltage [V_{AC}]	220 to 240							
Mains frequency [Hz]	50 / 60							
Secondary voltage	11,5V		11,5V		11,5V		11,5V	
Wattage range [W]	20 - 60		20 - 60		20 - 60		20 - 60	
Dimmable [Yes/No]	Trailing edge phase control							
Through-wiring	No							
ECG certification	EMC – CE - SEMCO							

B) Logistic Data

Product name	Product number	Lamp base	Color temperature	SU
Kit Halo Pro Hydro R 1x35W White	4008321 399045	GU5.3	3100 K	6x1
Kit Halo Pro Hydro R 3x35W White	4008321 445636	GU5.3	3100 K	4x1
Kit Halo Pro Hydro R 1x35W Brushed Nickel	4008321 399069	GU5.3	3100 K	6x1
Kit Halo Pro Hydro R 3x35W Brushed Nickel	4008321 445650	GU5.3	3100 K	4x1
Kit Halo Pro Hydro S 1x35W White	4008321 399083	GU5.3	3100 K	6x1
Kit Halo Pro Hydro S 3x35W White	4008321 445674	GU5.3	3100 K	4x1
Kit Halo Pro Hydro S 1x35W Brushed Nickel	4008321 399106	GU5.3	3100 K	6x1
Kit Halo Pro Hydro S 3x35W Brushed Nickel	4008321 445698	GU5.3	3100 K	4x1

- Content : spot + lamp + ECG + fixing system + lamp holder & wiring + user manual