

## 800 & 801 SERIES FOR 15/32" MOUNTING HOLE

PART NO.	MIL DESIG.	COLOR FIG.
800-1030-0331-504	MS25041-6	R 1
800-1030-0332-504	MS25041-7	G 1
800-1030-0333-504	MS25041-8	Y 1
801-1030-0331-504	MS25041-2	R 2
801-1030-0332-504	MS25041-3	G 2
801-1030-0333-504	MS25041-4	Y 2

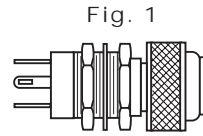


Fig. 1  
FLAT PRESS-TO-TEST WITH NON DIMMING LENS CAP

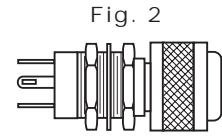


Fig. 2  
FLAT PRESS-TO-TEST WITH DIMMING LENS CAP

Uses:  
T-1 3/4 MIDGET FLANGE BASE INCANDESCENT LAMP OR BASED LED LAMP

## 803 & 804 SERIES FOR 5/8" MOUNTING HOLE

PART NO.	MIL DESIG.	COLOR FIG.
803-1710-0331-504	MS25331-6	R 3
803-1710-0332-504	MS25331-7	G 3
803-1710-0333-504	MS25331-8	Y 3
804-1710-0331-504	MS25331-2	R 4
804-1710-0332-504	MS25331-3	G 4
804-1710-0333-504	MS25331-4	Y 4

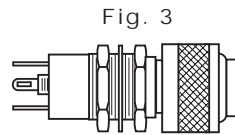


Fig. 3  
FLAT PRESS-TO-TEST WITH NON DIMMING LENS CAP

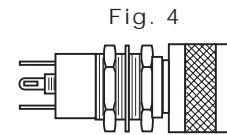


Fig. 4  
FLAT PRESS-TO-TEST WITH DIMMING LENS CAP

Uses:  
T-3 1/4 MINIATURE BAYONET BASE INCANDESCENT LAMP

## 373, 375 & 376 SERIES FOR 11/16" MOUNTING HOLE • WATERTIGHT

PART NO.*	MIL DESIG.	COLOR FIG.
373-0410-0131-203	LH76/3, LC14RN3	R 5
375-0410-0131-203	LH76/3, LC17RN3	R 6
376-0410-0131-203	LH76/3, LC18RN3	R 7

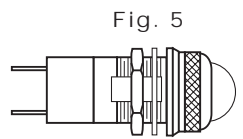
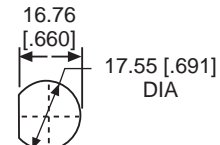


Fig. 5  
CONVEX, TRANSPARENT LENS CAP



RECOMMENDED PANEL CUTOUT

Uses:  
T-3 1/4 MINIATURE BAYONET BASE INCANDESCENT LAMP OR BASED LED LAMP

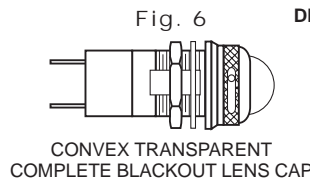


Fig. 6  
CONVEX TRANSPARENT COMPLETE BLACKOUT LENS CAP

DIMMER TYPES

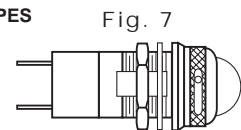
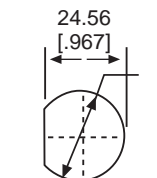


Fig. 7  
CONVEX TRANSPARENT SEMI BLACKOUT LENS CAP

## 378, 379, 380 & 381 SERIES FOR 1" MOUNTING HOLE • WATERTIGHT

PART NO.*	MIL DESIG.	COLOR FIG.
378-3402-0131-203	LH80/1, LC21RN3	R 8
379-3402-0531-203	LH80/1, LC22RN3	R 9
380-3402-0131-203	LH80/1, LC23RN3	R 10
381-3402-0131-203	LH80/1, LC24RN3	R 11



RECOMMENDED PANEL CUTOUT

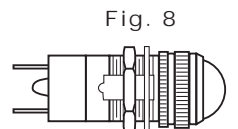


Fig. 8  
CONVEX TRANSPARENT LENS CAP

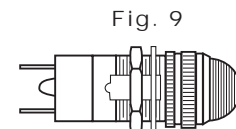


Fig. 9  
TORPEDO TRANSPARENT LENS CAP

Uses:  
S-6 DOUBLE CONTACT BAYONET BASE INCANDESCENT LAMP

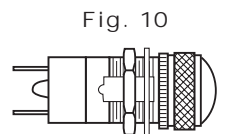


Fig. 10  
CONVEX TRANSPARENT COMPLETE BLACKOUT LENS CAP

DIMMER TYPES

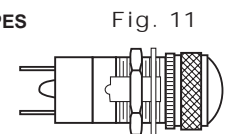


Fig. 11  
CONVEX TRANSPARENT SEMI BLACKOUT LENS CAP

\* Cap and bases ordered separately; for complete military part number listing, please see military index on Pages 32 & 33

Neon and incandescent lamp information on Pages 35 and 36.

Based LED lamp information on Pages 37 through 40.

Dimensions in mm [inches]