

**MICRO SWITCH**FREEPORT, ILLINOIS, U.S.A.  
A DIVISION OF HONEYWELL

FED. MFG. CODE 91929

**OPERATOR INDICATOR  
UNITS  
BARRIER MOUNT**CATALOG LISTING  
**2C200 SERIES****CHART 4**

THIS DRAWING COVERS A PROPRIETARY ITEM AND IS THE PROPERTY OF MICRO SWITCH, A DIVISION OF MINNEAPOLIS-HONEYWELL REGULATOR CO. THIS DRAWING IS NOT TO BE COPIED OR USED WITHOUT THE APPROVAL OF MICRO SWITCH.

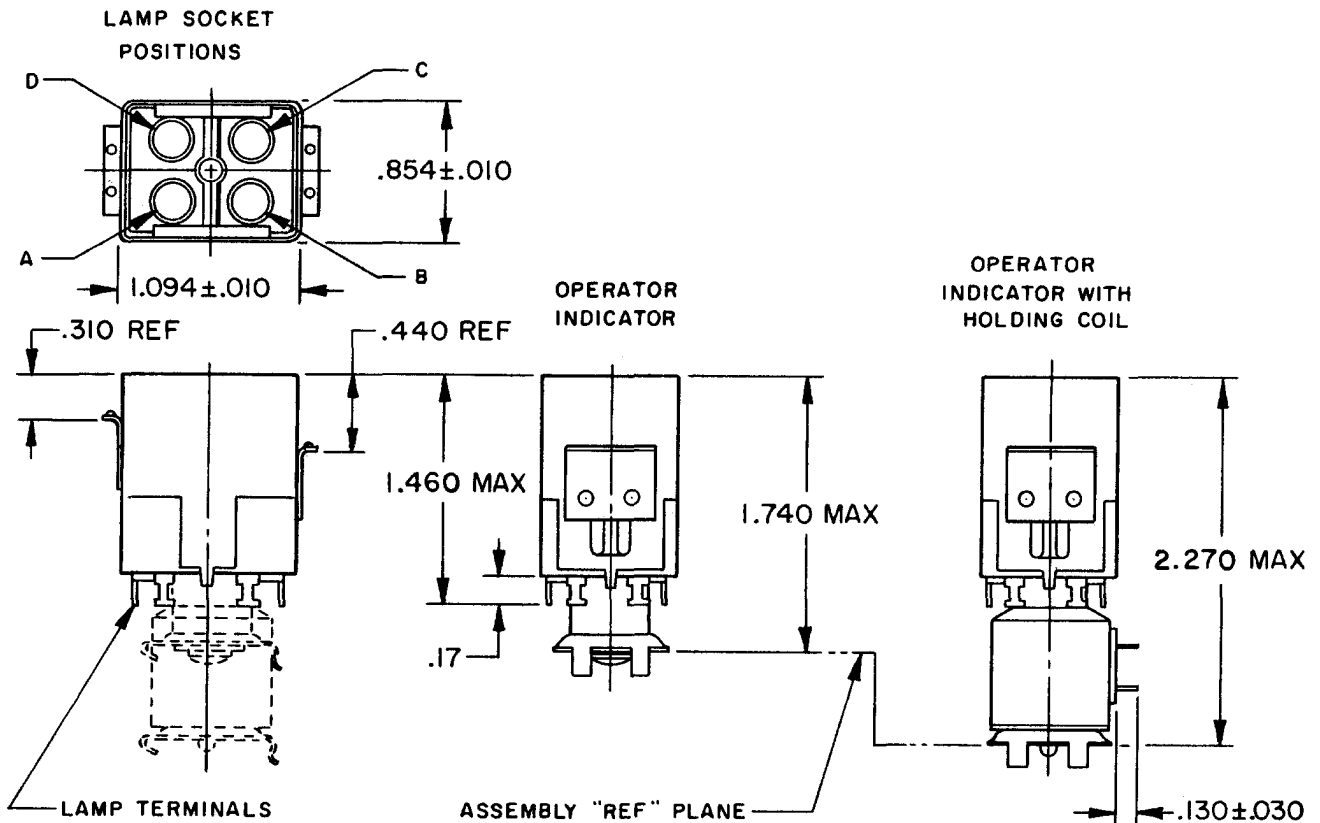
CATALOG LISTING  
**2C200 SERIES CHART 4**  
PAGE 1 OF 1ISSUE  
**M**  
13

REVISIONS

A	CO-82436	JALA	6 FEB 96
B	CO-92836	CSL	18 AUG 98
C	CO-95794	CSL	28 JAN 00
D	204136	CSL	11 OCT 01

18 JAN 66  
18 JAN 66  
19 JAN 65

RASTER  
DRAWN  
O M W

LAMP TERMINAL DESIGNATION A, B, C, D  
TWO TERMINALS PER LAMP

KEYWAY FOR ORIENTATION OF SWITCH UNITS

NOTE-

- 1 - TERMINALS ARE PLATED FOR SOLDERING
- 2 - RELAMPABLE FROM FRONT OF PANEL WITHOUT TOOLS

LAMP SOCKET POSITIONS	CATALOG LISTINGS				SCALE	
	OPERATOR INDICATOR	OPERATOR INDICATOR WITH HOLDING COIL				DO NOT SCALE PRINT  UNLESS OTHERWISE SPECIFIED DIMENSIONS ARE IN INCHES <b>TOLERANCES ARE:</b> ONE PLACE (.01) ± .030 TWO PLACE (.001) ± .015 THREE PLACE (.000) ± .005 ANGLES ±
		6 VDC	12 VDC	28 VDC	48 VDC	
A, C	2C201	(B)		(D)	(A)	
A, B, C, D	2C203	(C)		2C227	(B)	
A, C	(A)					
A, C	(A)					
					WEIGHT	



**MICRO SWITCH**

FREEPORT, ILLINOIS, U.S.A.  
A DIVISION OF HONEYWELL

FED. MFG. CODE 91929

# OPERATOR INDICATOR UNITS BARRIER MOUNT

CATALOG LISTING  
**2C200 SERIES**

**CHART 4**

THIS DRAWING COVERS A PROPRIETARY ITEM AND IS THE PROPERTY OF MICRO SWITCH, A DIVISION OF MINNEAPOLIS-HONEYWELL REGULATOR CO. THIS DRAWING IS NOT TO BE COPIED OR USED WITHOUT THE APPROVAL OF MICRO SWITCH.

CATALOG LISTING  
**2C200 SERIES CHART 4**  
PAGE 1 OF 1

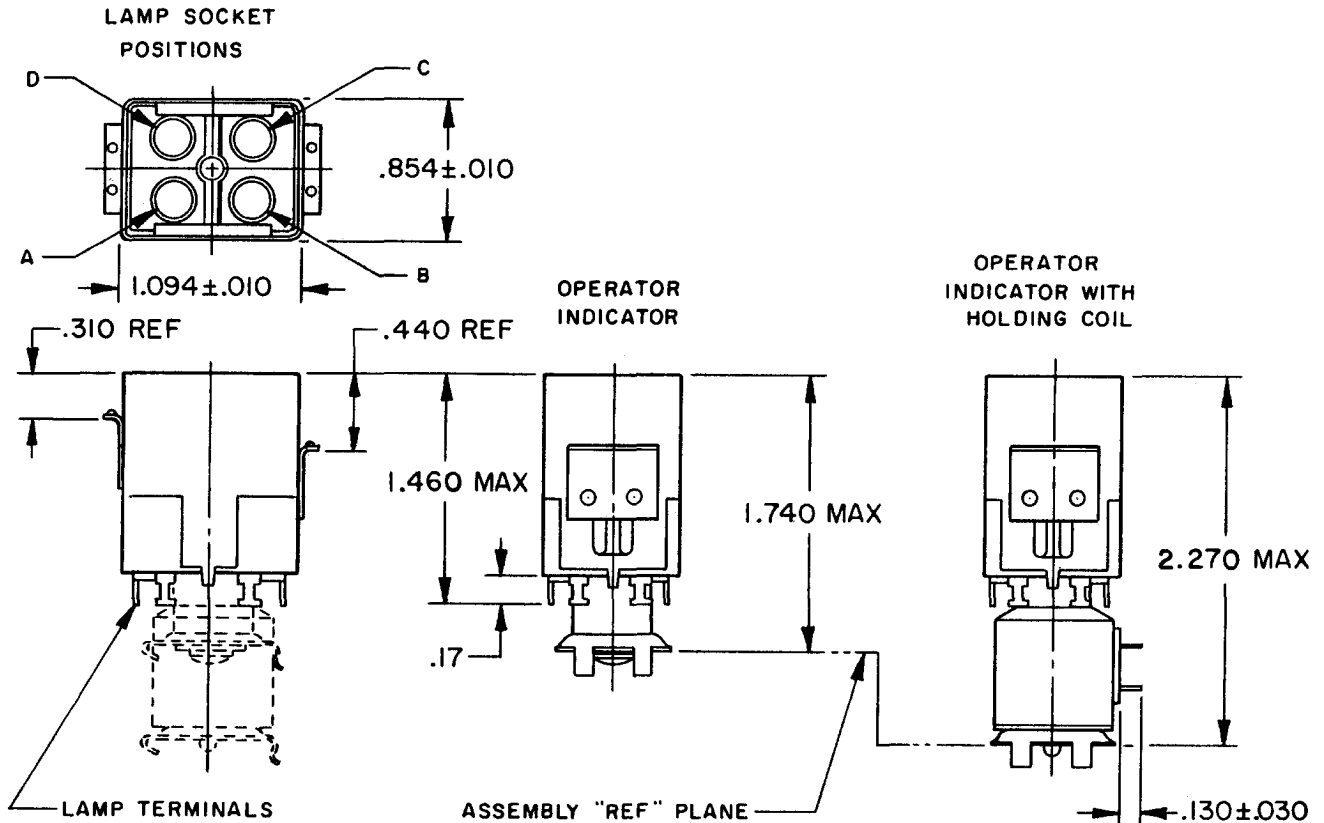
ISSUE  
**M**  
12

REVISIONS

A	CO-82436	JALA	6 FEB 96
B	CO-92836	CSL	18 AUG 98
C	CO-95794	CSL	28 JAN 00

FORMTEK  
DRAWN  
O M W 19 JAN 65 CHECK  
LSD  
18 JAN 66 CHECK  
CSK  
18 JAN 66 CHECK  
CSK

REPLACES  
RELEASE NO. SR 11638  
SR 11638



LAMP TERMINAL DESIGNATION A, B, C, D  
TWO TERMINALS PER LAMP

KEYWAY FOR ORIENTATION OF SWITCH UNITS

**NOTE-**

- 1 - TERMINALS ARE PLATED FOR SOLDERING
- 2 - RELAMPABLE FROM FRONT OF PANEL WITHOUT TOOLS

LAMP SOCKET POSITIONS	CATALOG LISTINGS				SCALE	
	OPERATOR INDICATOR	OPERATOR INDICATOR WITH HOLDING COIL				DO NOT SCALE PRINT  UNLESS OTHERWISE SPECIFIED DIMENSIONS ARE IN INCHES <b>TOLERANCES ARE:</b> ONE PLACE (.01) $\pm .030$ TWO PLACE (.001) $\pm .015$ THREE PLACE (.000) $\pm .003$ ANGLES $\pm .003$
		6 VDC	12 VDC	28 VDC	48 VDC	
A, C	2C201	(B)		2C225	(A)	
A, B, C, D	2C203	(C)		2C227	(B)	
A, C	(A)					
A, C	(A)					
					WEIGHT	