

Features:

- Grey face colour, White segment colour.
- Two performance options, HE Blue and Blue.
- Choice of two wavelength, HE Blue 465 nm and Blue 428 nm.
- Distinctive blue colour ideal for a host of applications including audio, instrumentation and corporate signage.
- Very economical.
- Wide viewing angle.

Font design

 Product not shown
actual size

Electro / Optical Characteristics - $I_F = 20 \text{ mA}$ (* HE Blue - $I_F = 10 \text{ mA}$) $T_a = 25^\circ \text{ C}$

| Part Number - Common Cathode | | Part Number - Common Anode | | Emitting Colour | Wavelength Peak λ_P | Forward Voltage V_F | | Luminous Intensity I_V | |
|------------------------------|-----------------|----------------------------|-----------------|-----------------|-----------------------------|-----------------------|------|--------------------------|---------|
| Farnell | Forge Europa | Farnell | Forge Europa | | | typical | max | min | typical |
| 366-4727 | FN1-0561B050SGW | 366-4739 | FN1-0562B050SGW | * HE Blue | 465 | 3.30 | 3.70 | - | 14 |
| 366-4740 | FN1-0561B010SGW | 366-4752 | FN1-0562B010SGW | Blue | 428 | 3.80 | 4.50 | - | 10 |
| Units | | | | | nm | V | | mcd per segment | |

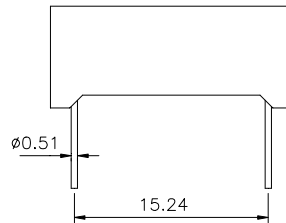
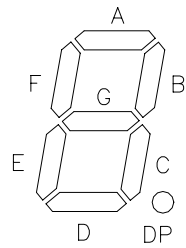
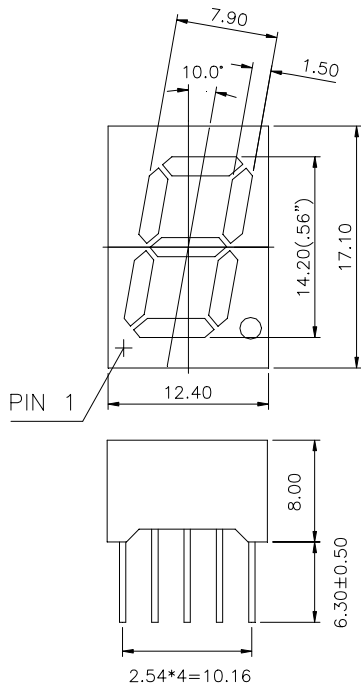
Maximum Ratings $T_a = 25^\circ \text{ C}$ - Derate above 25° C

| Characteristic | Condition | Symbol | Rating | Units |
|----------------------------|-----------------------------------|-----------|--------------|--------------------|
| Pulse Forward Current | 0.1 duty cycle @ 1KHz (HE Blue) | I_{FP} | 100 (35) | mA |
| DC Forward Current | (HE Blue) | I_F | 25 (15) | mA |
| Reverse Voltage | $I_R = 100 \mu\text{A}$ | V_R | 5 | V |
| Power Dissipation | | P_D | 85 | mW |
| Operating Temperature | | T_{opr} | - 25 to + 80 | $^\circ \text{ C}$ |
| Storage Temperature | | T_{stg} | - 30 to + 85 | $^\circ \text{ C}$ |
| Lead soldering temperature | 1.6 mm from body - max 3 seconds | | 260 | $^\circ \text{ C}$ |

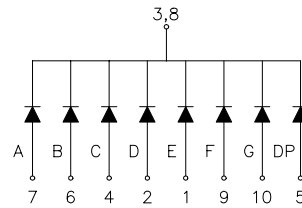
Note

Industry standard procedures regarding static must be observed when handling product produced with blue die material.

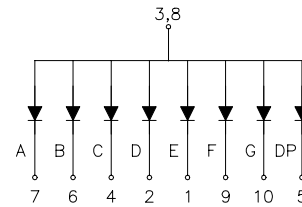
Package Outline



Common Cathode



Common Anode



Tolerance ± 0.25 mm unless stated

