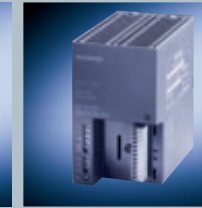
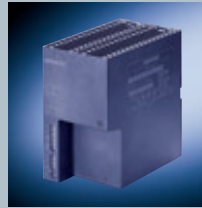
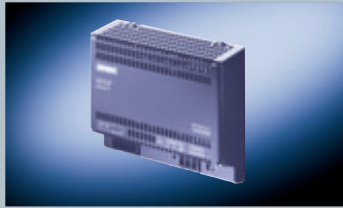


SITOP ordering data

The facets selection from our full range



Technical specifications

Flat Design

UL Class 2

Protection IP 65

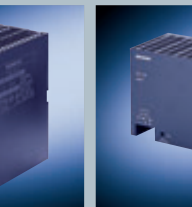
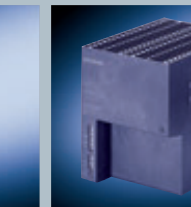
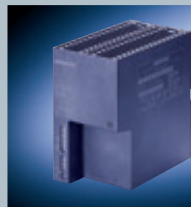
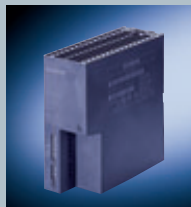
1-ph., dual output

1-ph., variable output

SITOP	24 V/5 A	24 V/10 A	24 V/3.8 A	ET 200X Design 24 V/10 A	2 x 15 V/2.5 A	3 ... 52 V/10 A
Order No.	6EP1333-1AL12	6EP1334-1AL12	6EP1332-2BA00	6EP1334-2CA00	6EP1353-0AA00	6EP1353-2BA00
Input voltage rated value – range	120/230 V AC 85 ... 132 V / 170 ... 264 V	120/230 V AC 85 ... 132 V / 170 ... 264 V	120/230 V AC 93 ... 132 V / 187 ... 264 V	120/230 V AC 93 ... 132 V / 187 ... 264 V	120–230 V AC 93 ... 264 V	120/230 V AC 85 ... 132 V / 170 ... 264 V
Mains buffering	> 20 ms (at 93/187 V)	> 20 ms (at 93/187 V)	> 10 ms (at 93/187 V)	> 20 ms (at 93/187 V)	> 10/40 ms (at 120/187 V)	> 10 ms (93/187 V)
Line frequency rated value	50/60 Hz	50/60 Hz	50/60 Hz	50/60 Hz	50/60 Hz	50/60 Hz
Input current rated value – inrush current (25 °C / 77 °F) – recommended protection in the supply cable	2.2/1.2 A < 32 A from 6 A charac. C	4/2.5 A < 65 A from 10 A charac. C	1.8/0.7 A < 32 A from 6 A charac. C	4.3/2.6 A < 65 A from 16 A charac. C	1.9–1.15 A < 30 A from 10 A char. C	2.2/0.9 A < 32 A 6 A char. C
Output voltage rated value – tolerance – setting range	24 V DC ± 1 % 22 ... 29 V	24 V DC ± 1 % 22 ... 29 V	24 V DC ± 1 % 22.8 ... 26.4 V	24 V DC ± 3 % 22.8 ... 25.2 V DC	2 x 15 V DC ± 2 % 14.5 ... 17 V DC	3 ... 52 V DC ± 1 % 3 ... 52 V DC
Output current rated value	5 A	10 A	3.8 A	10 A (up to 40 °C)	2.5 A (3.5 up to 45 °C)	10 A
Efficiency at rated values approx.	88%	89%	87 %	87%	80%	84% (24 V/5 A)
Parallel switch for higher perf.	Yes	Yes	Yes	Yes	Yes	Yes
Electronic short-circuit protection	Yes	Yes	Yes	Yes	Yes	Yes
RI specification (EN 55022)	Class B	Class B	Class B	Class A	Class A	Class B
Degree of prot. (EN 60529)	IP 20	IP 20	IP 20	IP 65	IP 20	IP 20
Ambient temperature	0 ... +60 °C / 32 ... 140 °F	0 ... +60 °C / 32 ... 140 °F	0 ... +60 °C / 32 ... 140 °F	–25 ... +55 °C / –13 ... 131 °F	0 ... +60 °C / 32 ... 140 °F	0 ... +60 °C / 32 ... 140 °F
Dimensions (W x H x D) in mm / inches	160 x 130 x 60 / 6.3 x 5.1 x 2.36	160 x 130 x 60 / 6.3 x 5.1 x 2.36	75 x 125 x 125 / 2.95 x 4.92 x 4.92	140 x 270 x 126 / 5.51 x 10.63 x 4.96	75 x 125 x 125 / 2.95 x 4.92 x 4.92	75 x 125 x 125 / 2.95 x 4.92 x 4.92
Weight approx.	0.6 kg / 1.32 lbs	0.72 kg / 1.6 lbs	0.75 kg / 1.7 lbs	1.7 kg / 3.7 lbs	0.75 kg / 1.7 lbs	0.9 kg / 2 lbs
Approvals	UL, cUL, CE	UL, cUL, CE	UL, cUL, CE	UL, cUL, CE	UL, cUL, CE	UL, cUL, CE

SITOP ordering data

The facets selection from our full range



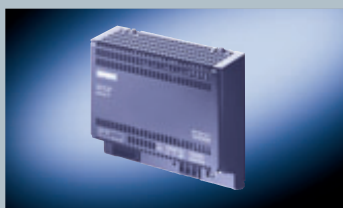
Technical specifications

1-phase

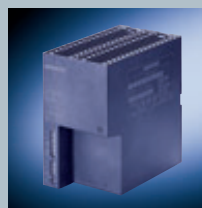
SITOP	24 V/0.5 A	24 V/2 A	24 V/5 A	24 V/10 A	24 V/20 A
Order No.	6EP1331-2BA10	6EP1331-2BA00	6EP1333-2BA00	6EP1334-2BA00	6EP1336-2BA00
Input voltage rated value – range	120–230 V AC 93 ... 264 V	120/230 V AC 93 ... 132 V /	AC 120/230 V 93 ... 132 V	AC 120/230 V 93 ... 132 V /	AC 120/230 V 93 ... 132 V /

SITOP ordering data

The facets selection from our full range



Flat Design



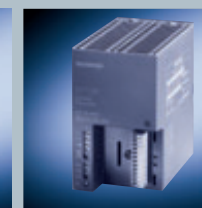
UL Class 2



Protection IP 65



1-ph., dual output



1-ph., variable output

Technical specifications

SITOP	24 V/5 A	24 V/10 A	24 V/3.8 A	ET 200X Design 24 V/10 A	2 x 15 V/2.5 A	3 ... 52 V/10 A
Order No.	6EP1333-1AL12	6EP1334-1AL12	6EP1332-2BA00	6EP1334-2CA00	6EP1353-0AA00	6EP1353-2BA00
Input voltage rated value range	120/230 V AC 85 ... 152 V/	120/230 V AC 85 ... 132 V/	120/230 V AC 93 ... 132 V/	120/230 V AC 93 ... 132 V/	120-230 V AC 93 ... 264 V	120/230 V AC 85 ... 132 V/

