

Whatever tasks you have to tackle:  
**SITOP Power supplies can handle them!**



# sitop



**SIEMENS**



In industrial applications, 24 V DC is becoming the voltage of choice. Unlike other vendors, Siemens offers a wide range of options to complement its power supplies. In addition to the complete product range of 24 V DC power supplies – from 0.5 A to 40 A, and power supplies in 5 V, 12 V, 15 V and 48 V, Siemens also provides power security equipment:

- Buffer modules for sensitive processes to avoid the loss 24 V DC during short power outages or voltage fluctuations
- DC UPS if the process requires longer hold-up times
- Redundancy modules if the process requires a redundant power supply configuration
- SITOP select electronic diagnostic modules if the application has multiple load circuits and a shutdown of the circuit, affected by the short, is required



**SIEMENS**

## Features and Benefits

### Compact size

High power density  
minimizes required  
panel space

### Worldwide standards and approvals

UL, cUL, and CE  
approvals are standard  
CSA and FM approvals  
are available with certain  
power supplies

### DIN rail mounting

Reduces panel assembly time

### High efficiency

Reduces the build-up of unwanted  
heat in the panel

### Secondary side short-circuit protection

No fusing required due to automatic  
crowbar function

### UL 508 Listed

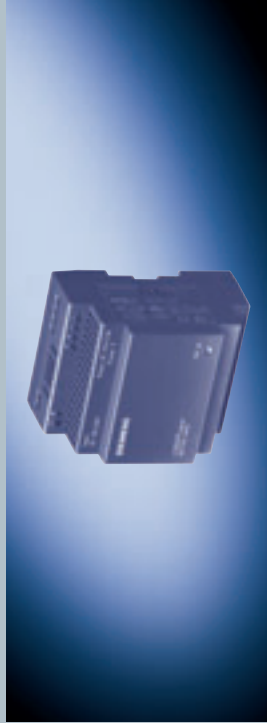
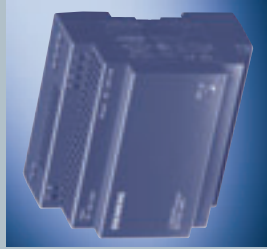
Suitable for UL applications with 100%  
of the rated output current  
No derating necessary

### Single- and three-phase input

Broad offering of 24 V DC single-phase  
power supplies from 0.5 A up to 40 A  
Three-phase solutions (available from  
5 to 40 A) eliminate the need for 480 V –  
120 V control power transformer

### Power security add-on modules

Maximum protection with 24/7 reliability



**SITOP ordering data**

**Power  
supplies  
LOGO!Power**

## Features and Benefits

### Compact size

High power density  
minimizes required  
panel space

### Worldwide standards and approvals

UL, cUL, and CE  
approvals are standard  
CSA and FM approvals  
are available with certain  
power supplies

### DIN rail mounting

Reduces panel assembly time

### High efficiency

Reduces the build-up of unwanted  
heat in the panel

### Secondary side short-circuit protection

No fusing required due to automatic  
crowbar function

### UL 508 Listed

Suitable for UL applications with 100%  
of the rated output current  
No derating necessary

### Single- and three-phase input

Broad offering of 24 V DC single-phase  
power supplies from 0.5 A up to 40 A  
Three-phase solutions (available from  
5 to 40 A) eliminate the need for 480 V –  
120 V control power transformer

### Power security add-on modules

Maximum protection with 24/7 reliability



## SITOP ordering data

Power  
supplies  
LOGO!Power



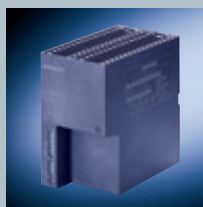






# SITOP ordering data

The facets selection from our full range



## Technical specifications

## Flat Design

## UL Class 2

## Protection IP 65

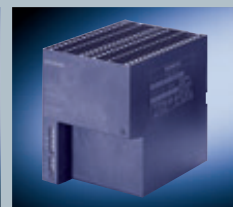
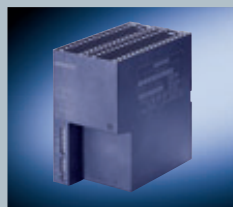
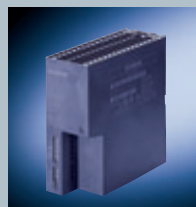
## 1-ph., dual output

## 1-ph., variable output

SITOP	24 V/5 A	24 V/10 A	24 V/3.8 A	ET 200X Design 24 V/10 A	2 x 15 V/2.5 A	3 ... 52 V/10 A
Order No.	6EP1333-1AL12	6EP1334-1AL12	6EP1332-2BA00	6EP1334-2CA00	6EP1353-0AA00	6EP1353-2BA00
Input voltage rated value – range	120/230 V AC 85 ... 132 V / 170 ... 264 V	120/230 V AC 85 ... 132 V / 170 ... 264 V	120/230 V AC 93 ... 132 V / 187 ... 264 V	120/230 V AC 93 ... 132 V / 187 ... 264 V	120–230 V AC 93 ... 264 V	120/230 V AC 85 ... 132 V / 170 ... 264 V
Mains buffering	> 20 ms (at 93/187 V)	> 20 ms (at 93/187 V)	> 10 ms (at 93/187 V)	> 20 ms (at 93/187 V)	> 10/40 ms (at 120/187 V)	> 10 ms (93/187 V)
Line frequency rated value	50/60 Hz	50/60 Hz	50/60 Hz	50/60 Hz	50/60 Hz	50/60 Hz
Input current rated value – inrush current (25 °C / 77 °F) – recommended protection in the supply cable	2.2/1.2 A < 32 A from 6 A charac. C	4/2.5 A < 65 A from 10 A charac. C	1.8/0.7 A < 32 A from 6 A charac. C	4.3/2.6 A < 65 A from 16 A charac. C	1.9–1.15 A < 30 A from 10 A char. C	2.2/0.9 A < 32 A 6 A char. C
Output voltage rated value – tolerance – setting range	24 V DC ± 1 % 22 ... 29 V	24 V DC ± 1 % 22 ... 29 V	24 V DC ± 1 % 22.8 ... 26.4 V	24 V DC ± 3 % 22.8 ... 25.2 V DC	2 x 15 V DC ± 2 % 14.5 ... 17 V DC	3 ... 52 V DC ± 1 % 3 ... 52 V DC
Output current rated value	5 A	10 A	3.8 A	10 A (up to 40 °C)	2.5 A (3.5 up to 45 °C)	10 A
Efficiency at rated values approx.	88%	89%	87 %	87%	80%	84% (24 V/5 A)
Parallel switch for higher perf.	Yes	Yes	Yes	Yes	Yes	Yes
Electronic short-circuit protection	Yes	Yes	Yes	Yes	Yes	Yes
RI specification (EN 55022)	Class B	Class B	Class B	Class A	Class A	Class B
Degree of prot. (EN 60529)	IP 20	IP 20	IP 20	IP 65	IP 20	IP 20
Ambient temperature	0 ... +60 °C / 32 ... 140 °F	0 ... +60 °C / 32 ... 140 °F	0 ... +60 °C / 32 ... 140 °F	–25 ... +55 °C / –13 ... 131 °F	0 ... +60 °C / 32 ... 140 °F	0 ... +60 °C / 32 ... 140 °F
Dimensions (W x H x D) in mm / inches	160 x 130 x 60 / 6.3 x 5.1 x 2.36	160 x 130 x 60 / 6.3 x 5.1 x 2.36	75 x 125 x 125 / 2.95 x 4.92 x 4.92	140 x 270 x 126 / 5.51 x 10.63 x 4.96	75 x 125 x 125 / 2.95 x 4.92 x 4.92	75 x 125 x 125 / 2.95 x 4.92 x 4.92
Weight approx.	0.6 kg / 1.32 lbs	0.72 kg / 1.6 lbs	0.75 kg / 1.7 lbs	1.7 kg / 3.7 lbs	0.75 kg / 1.7 lbs	0.9 kg / 2 lbs
Approvals	UL, cUL, CE	UL, cUL, CE	UL, cUL, CE	UL, cUL, CE	UL, cUL, CE	UL, cUL, CE

# SITOP ordering data

The facets selection from our full range



## Technical specifications

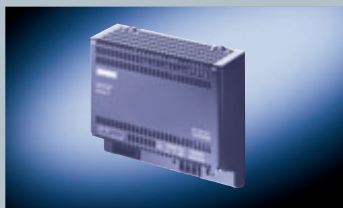
## 1-phase

SITOP	24 V/0.5 A	24 V/2 A	24 V/5 A	24 V/10 A	24 V/20 A
Order No.	6EP1331-2BA10	6EP1331-2BA00	6EP1333-2BA00	6EP1334-2BA00	6EP1336-2BA00
Input voltage rated value – range	120–230 V AC 93 ... 264 V	120/230 V AC 93 ... 132 V /	AC 120/230 V 93 ... 132 V	AC 120/230 V 93 ... 132 V /	AC 120/230 V 93 ... 132 V /

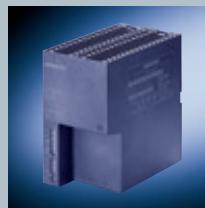


## SITOP ordering data

The facets selection from our full range



Flat Design



UL Class 2



Protection IP 65



1-ph., dual output



1-ph., variable output

Technical specifications

SITOP	24 V/5 A	24 V/10 A	24 V/3.8 A	ET 200X Design 24 V/10 A	2 x 15 V/2.5 A	3 ... 52 V/10 A
Order No.	6EP1333-1AL12	6EP1334-1AL12	6EP1332-2BA00	6EP1334-2CA00	6EP1353-0AA00	6EP1353-2BA00
Input voltage rated value range	120/230 V AC 85 ... 152 V/	120/230 V AC 85 ... 132 V/	120/230 V AC 93 ... 132 V/	120/230 V AC 93 ... 132 V/	120-230 V AC 93 ... 264 V	120/230 V AC 85 ... 132 V/

