

NOTES:

1. THIS LIGHT PIPE ASSEMBLY TO BE USED WITH THE FOLLOWING 1X4 SFP CAGE ASSEMBLIES:

747280411 - 1X4 SFP CAGE ASSEMBLY W/ PRESS FIT PINS, W/ 0.090 GASKET, F/ LIGHT PIPES (REFER TO DOCUMENT SD-74728-410)

747280412 - 1X4 SFP CAGE ASSEMBLY W/ SOLDER POSTS, W/ 0.103 GASKET, F/ LIGHT PIPES (REFER TO DOCUMENT SD-74728-412)

747280415 - 1X4 SFP CAGE ASSEMBLY W/ PRESS FIT PINS, W/ 0.0103 GASKET, F/ LIGHT PIPES (REFER TO DOCUMENT SD-74728-415)

2. IT IS RECOMMENDED THAT THE CAGE ASSEMBLY BE PRESSED INTO OR SOLDERED TO THE PCB PRIOR TO ASSEMBLING THE LIGHT PIPE ASSEMBLY.

3. LED'S TO HAVE A MAXIMUM HEIGHT OF 1.4mm AND A MINIMUM HEIGHT OF 0.7mm

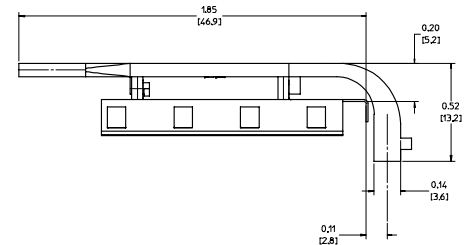
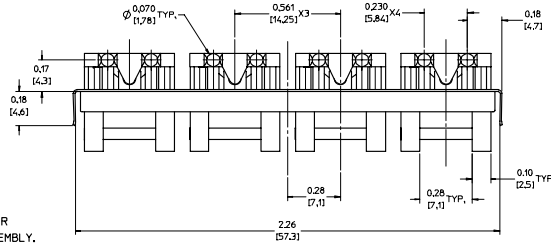
4. RECOMMENDED LED'S INCLUDE THE FOLLOWING MANUFACTURERS:

DIALIGHT; 597-77x1-5xx SERIES

CHICAGO MINIATURE; 7016 SERIES

KINGBRIGHT; APBL3025 SERIES (BICOLOR)
APL3015 SERIES (SINGLE COLOR)

5. THIS PART MEETS THE RESTRICTION OF HAZARDOUS SUBSTANCES IN ELECTRICAL AND ELECTRONIC EQUIPMENT (ROHS) DIRECTIVE (2002/95/EC).



- DIALIGHT; 597-77x1-5xx SERIES
- CHICAGO MINIATURE; 7016 SERIES
- KINGBRIGHT; APBL3025 SERIES (BICOLOR)
APL3015 SERIES (SINGLE COLOR)

ENTER DESCRIPTION IEC NO. L572004-0008 DRINKS/MONSON 2005/07/15 CHROBRUSSELL 2005/07/15 APPROVED DESCRIPTION 2005/07/15	QUALITY SYMBOLS	GENERAL TOLERANCES (UNLESS SPECIFIED)	DIMENSION STYLE	SCALE	DESIGN UNITS	THIRD ANGLE PROJECTION
	▽=0 ▽=0.1	mm INCH 4 PLACES ± --- ± --- 3 PLACES ± --- ± 0.05 2 PLACES ± 0.13 ± 0.1 1 PLACE ± 0.25 ± --- ANGULAR ± 1 °	IN/MM DRAWN BY: KS MONSO CHECKED BY: BRUSSELL APPROVED BY: BRUSSELL	4:1 DATE: 2004/07/08 DATE: 2004/07/08 DATE: 2004/07/08	METRIC MOLEX INCORPORATED	TITLE: 1X4 SFP LIGHT PIPE ASSEMBLY, BACK-TOP DOCUMENT NO.: SD-74728-001 SHEET NO.: 1 OF 5
	DRAFT WHERE APPLICABLE MUST REMAIN WITHIN DIMENSIONS		MATERIAL NO.: 747280001		MOLEX INCORPORATED	
	THIS DRAWING CONTAINS INFORMATION THAT IS PROPRIETARY TO MOLEX INCORPORATED AND SHOULD NOT BE USED WITHOUT WRITTEN PERMISSION					

PCB LAYOUT FOR BELLY TO BELLY MOUNTING

HOST CONNECTOR DETAIL

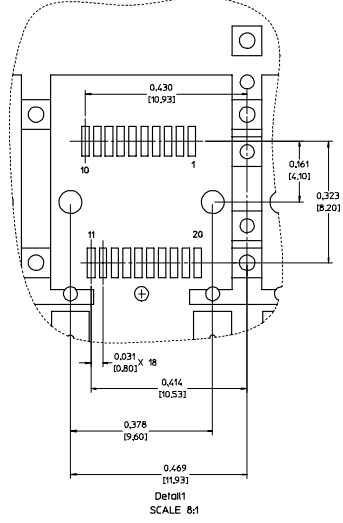
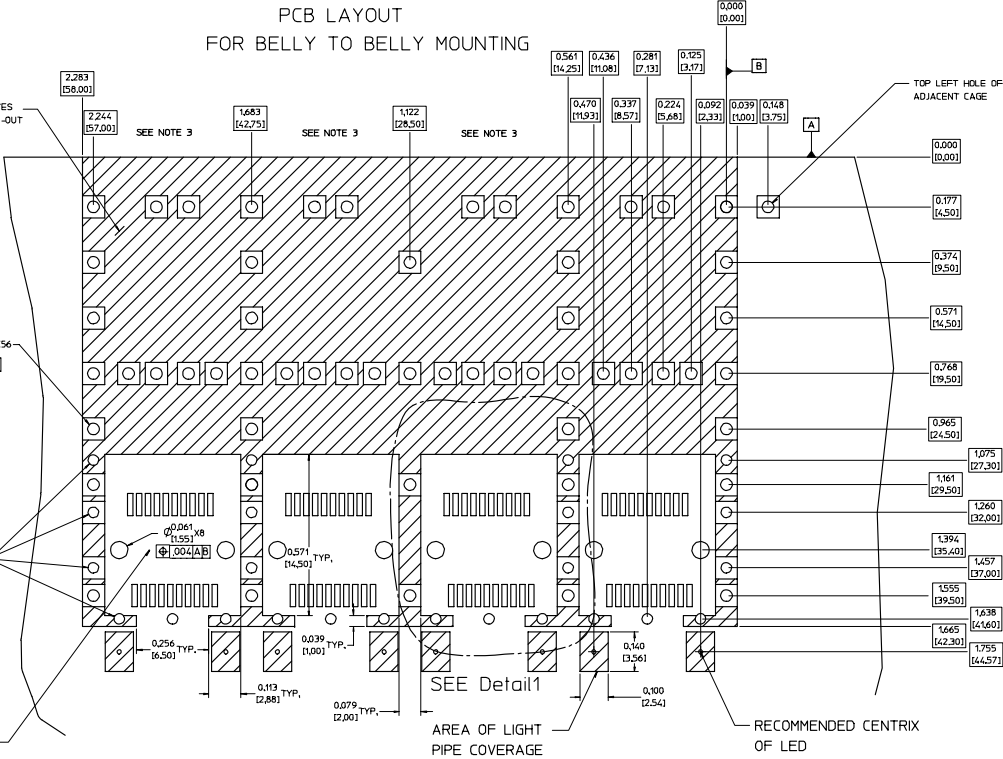
CROSS-HATCHED AREA DENOTES COMPONENT AND TRACE KEEP-OUT (EXCEPT CHASSIS GROUND)

$\phi 0.041 \pm 0.002$
 (1.05 ± 0.05)
 $\phi 0.004(A)$

$\phi 0.037 \pm 0.002$
 (0.95 ± 0.05)
 $\phi 0.004(A)$
SMALLER HOLE ON THESE FOUR ROWS ONLY

THIS AREA DENOTES COMPONENT KEEP-OUT (TRACES ALLOWED)

- NOTES:
1. PADS AND VIAS GO TO CHASSIS GROUND. (64 PLACES). RECOMMENDED PADS TO BE 2mm SQUARE.
 2. PLATING OPTIONAL FOR THROUGH HOLES. (16 PLACES).
 3. RECOMMENDED PLATING INCLUDES HASL, IMMERSION (GOLD OR SILVER), AND OSP.
 4. HOLE PATTERN REPEATS FOR EACH PORT, SPACING BETWEEN PORTS IS 5.61 (14.25).



SEE Detail
AREA OF LIGHT PIPE COVERAGE
RECOMMENDED CENTRIX OF LED

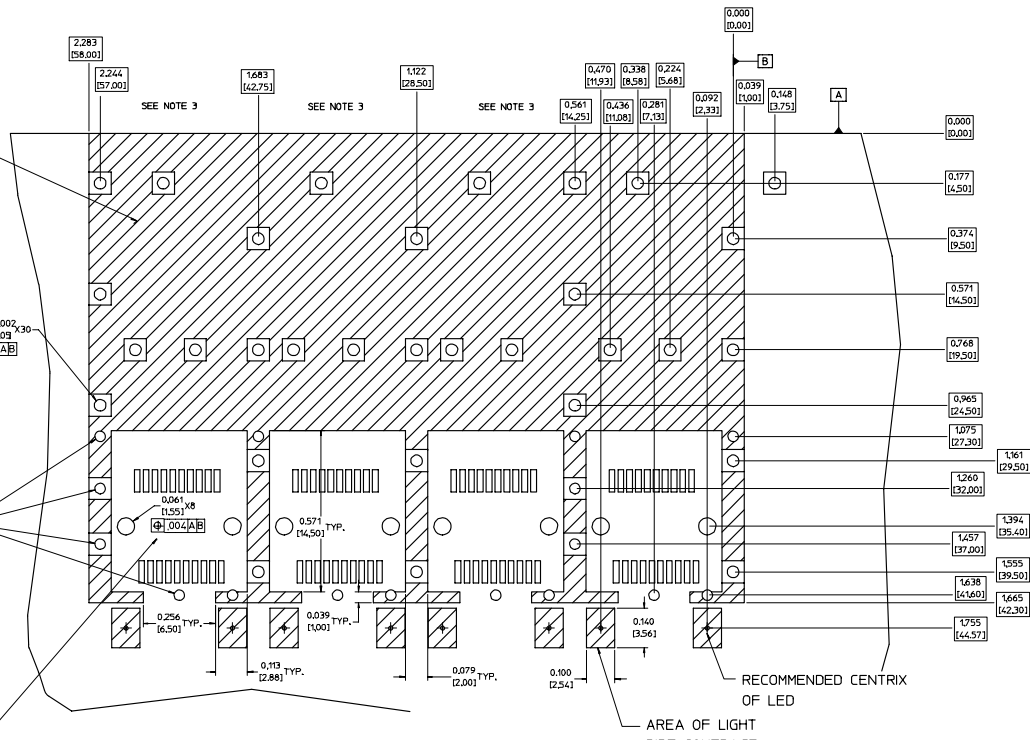
ENTER DESCRIPTION EC NO. US72004-0008 D CHROBRUSSELL 2005/07/15 APPROVED DESCRIPTION	QUALITY SYMBOLS	GENERAL TOLERANCES (UNLESS SPECIFIED)	DIMENSION STYLE	SCALE	DESIGN UNITS	THIRD ANGLE PROJECTION
		mm INCH	DRAWN BY DATE	6:1	METRIC	
	4 PLACES ± --- ± --- 3 PLACES ± --- ± 0.05 2 PLACES ± 0.13 ± 0.1 1 PLACE ± 0.25 ± --- ANGULAR ± 1 °	DRAWN BY: KS HONSO 2004/07/08 CHECKED BY: BRUSSELL 2004/07/08 APPROVED BY: BRUSSELL 2004/07/08	TITLE: 1X4 SFP LIGHT PIPE ASSEMBLY, BACK-TOP MATERIAL NO: 747280001 DOCUMENT NO: SD-74728-001	MOLEX INCORPORATED	SHEET NO: 2 OF 5	
	DRAFT WHERE APPLICABLE MUST REMAIN WITHIN DIMENSIONS THIS DRAWING CONTAINS INFORMATION THAT IS PROPRIETARY TO MOLEX INCORPORATED AND SHOULD NOT BE USED WITHOUT WRITTEN PERMISSION					

PCB LAYOUT FOR SINGLE SIDE MOUNTING

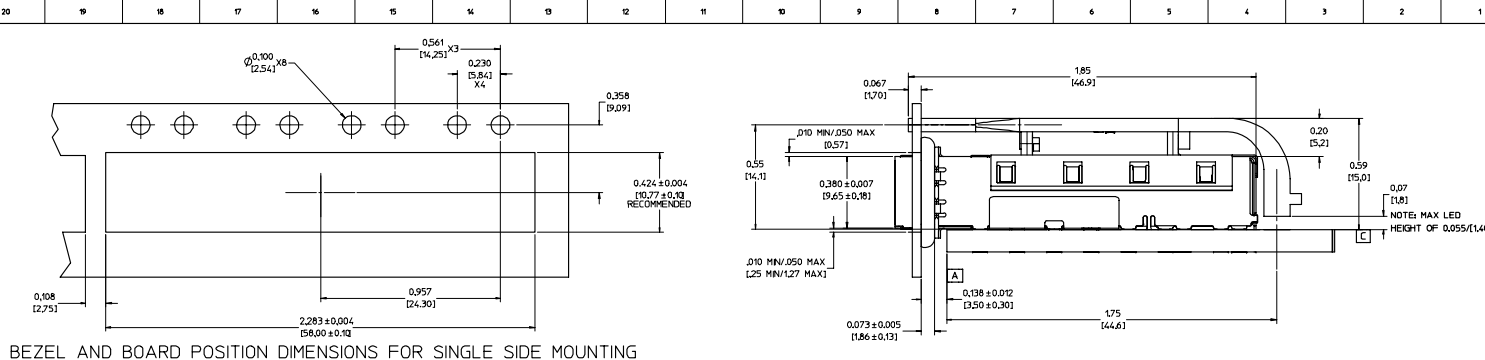
CROSS-HATCHED AREA DENOTES COMPONENT AND TRACE KEEP-OUT (EXCEPT CHASSIS GROUND)

THIS AREA DENOTES COMPONENT KEEP-OUT (TRACES ALLOWED)

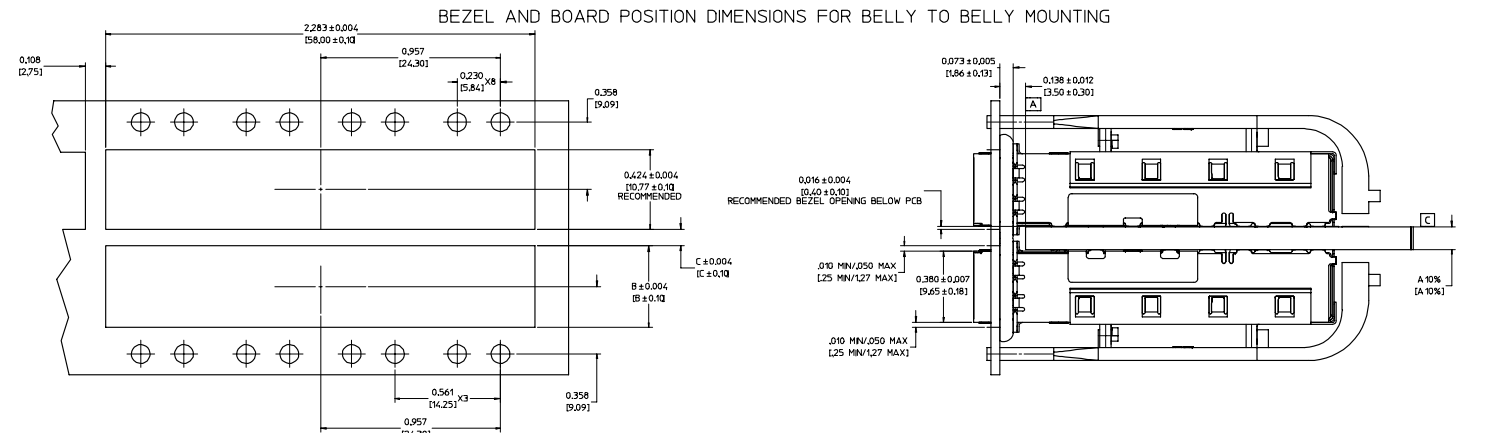
- NOTES:
- PADS AND VIAS GO TO CHASSIS GROUND, (34 PLACES). RECOMMENDED PADS TO BE 2mm SQUARE.
 - PLATING OPTIONAL FOR THROUGH HOLES, (12 PLACES).
 - RECOMMENDED PLATING INCLUDES HASL, IMERSION GOLD OR SILVER, AND OSP.
 - HOLE PATTERN REPEATS FOR EACH PORT, SPACING BETWEEN PORTS IS 5.61 (14.25).



QUALITY SYMBOLS	GENERAL TOLERANCES (UNLESS SPECIFIED)		DIMENSION STYLE		SCALE	DESIGN UNITS	THIRD ANGLE PROJECTION
	mm	INCH	IN/MM	DATE	6:1	METRIC	☉
▽=0	4 PLACES ±---	---	DRAWN BY	KS HONSO	2004/07/08	TITLE	1X4 SFP LIGHT PIPE ASSEMBLY, BACK-TOP
▽=0.05	3 PLACES ±---	±0.05	CHECKED BY	BRUSSELL	2004/07/08		
▽=0.13	2 PLACES ±0.13	±0.1	APPROVED BY	BRUSSELL	2004/07/08	MATERIAL NO.	747280001
▽=0.25	1 PLACE ±0.25	±---	DATE			DOCUMENT NO.	SD-74728-001
ANGULAR ± 1°							
DRAFT WHERE APPLICABLE MUST REMAIN WITHIN DIMENSIONS		SIZE		THIS DRAWING CONTAINS INFORMATION THAT IS PROPRIETARY TO MOLEX INCORPORATED AND SHOULD NOT BE USED WITHOUT WRITTEN PERMISSION			



BEZEL AND BOARD POSITION DIMENSIONS FOR SINGLE SIDE MOUNTING



BEZEL AND BOARD POSITION DIMENSIONS FOR BELLY TO BELLY MOUNTING

NOTE: FOR A GIVEN BOARD THICKNESS (A), DIMENSIONS (B) AND (C) ARE DIRECTLY AFFECTED.

USE RECOMMENDED DIMENSIONS AND TOLERANCES TO AID IN DEVELOPING BEZEL OPENING.

FOR EXAMPLE USING A BOARD THICKNESS OF .125" THE RECOMMENDED VALUES WOULD BE:

A = .125/3.18 ± 10%
 B = .434/11.03 ± .004
 C = .088/2.23 ± .004

ENTER DESCRIPTION IEC NO. LIST 2004-0008 CHROMIUM/BRUSSELL 2005/07/15 APPROVED DESCRIPTION 2005/07/15	QUALITY SYMBOLS	GENERAL TOLERANCES (UNLESS SPECIFIED)	DIMENSION STYLE	SCALE	DESIGN UNITS	THIRD ANGLE PROJECTION
	$\nabla=0$ $\nabla=0$	mm INCH 4 PLACES ± --- ± --- 3 PLACES ± --- ± .005 2 PLACES ± 0.13 ± .01 1 PLACE ± 0.25 ± --- ANGULAR ± 1 °	IN/MM	4:1	METRIC	<input checked="" type="checkbox"/> THIRD ANGLE PROJECTION
	DRAWN BY	DATE	TITLE	MOLEX INCORPORATED		
	KS HONGSO	2004/07/08	1X4 SFP LIGHT PIPE ASSEMBLY, BACK-TOP	MATERIAL NO. 747280001 DOCUMENT NO. SD-74728-001 SHEET NO. 4 OF 5		
DRAFT WHERE APPLICABLE MUST REMAIN WITHIN DIMENSIONS		THIS DRAWING CONTAINS INFORMATION THAT IS PROPRIETARY TO MOLEX INCORPORATED AND SHOULD NOT BE USED WITHOUT WRITTEN PERMISSION				

DATE	REV	CHANGES	COMMENTS
2004/01/15	1	PRELIMINARY DOCUMENT	N/A
2004/07/08	A	INITIAL RELEASE	N/A
2004/12/02	B	UPDATED VIEWS	DOCUMENT CHANGE ONLY
2005/06/03	C	CORRECTED P/N FOR DIALIGHT LED	DOCUMENT CHANGE ONLY
2005/06/10	D	UPDATED VIEWS TO SHOW CLEARANCE HOLES ADDED TO THE COVER.	N/A

ENTER DESCRIPTION IEC NO. US72004-0008 D DUNN/MONSON 2005/07/15 CHROMSEL 2005/07/15 APPROVED BY DESCRIPTION	QUALITY SYMBOLS	GENERAL TOLERANCES (UNLESS SPECIFIED)	DIMENSION STYLE	SCALE	DESIGN UNITS	THIRD ANGLE PROJECTION																														
	$\nabla=0$ $\nabla=0$	<table border="1"> <tr> <th></th> <th>mm</th> <th>INCH</th> </tr> <tr> <td>4 PLACES</td> <td>±.005</td> <td>±.0005</td> </tr> <tr> <td>3 PLACES</td> <td>±.01</td> <td>±.001</td> </tr> <tr> <td>2 PLACES</td> <td>±0.13</td> <td>±.01</td> </tr> <tr> <td>1 PLACE</td> <td>±0.25</td> <td>±.02</td> </tr> <tr> <td>ANGULAR</td> <td>± 1°</td> <td></td> </tr> </table>		mm	INCH	4 PLACES	±.005	±.0005	3 PLACES	±.01	±.001	2 PLACES	±0.13	±.01	1 PLACE	±0.25	±.02	ANGULAR	± 1°		<table border="1"> <tr> <th>DRAWN BY</th> <th>DATE</th> </tr> <tr> <td>KS MONSO</td> <td>2004/07/08</td> </tr> <tr> <th>CHECKED BY</th> <th>DATE</th> </tr> <tr> <td>BRUSSELL</td> <td>2004/07/08</td> </tr> <tr> <th>APPROVED BY</th> <th>DATE</th> </tr> <tr> <td>BRUSSELL</td> <td>2004/07/08</td> </tr> </table>	DRAWN BY	DATE	KS MONSO	2004/07/08	CHECKED BY	DATE	BRUSSELL	2004/07/08	APPROVED BY	DATE	BRUSSELL	2004/07/08	1:1	METRIC	
		mm	INCH																																	
	4 PLACES	±.005	±.0005																																	
3 PLACES	±.01	±.001																																		
2 PLACES	±0.13	±.01																																		
1 PLACE	±0.25	±.02																																		
ANGULAR	± 1°																																			
DRAWN BY	DATE																																			
KS MONSO	2004/07/08																																			
CHECKED BY	DATE																																			
BRUSSELL	2004/07/08																																			
APPROVED BY	DATE																																			
BRUSSELL	2004/07/08																																			
DRAFT WHERE APPLICABLE MUST REMAIN WITHIN DIMENSIONS		MATERIAL NO. 747280001	DOCUMENT NO. SD-74728-001	MOLEX INCORPORATED		SHEET NO. 5 OF 5																														