

## RER-7 lenses for Luxeon Rebel LEDs (UPDATED 20100301)



RER-7-MD



RER-7-W



RER-7-WW



RER-7-WW-PC

- Lens material optical grade PMMA with high UV and temperature resistance (105°C/220°F)
- High optical efficiency, >85%
- No lens holder. Attaching of the lens to customer's heat sink by gluing. For detailed mounting information, please look at the drawing
- Diameter 38 mm (MR11)

### LENS TYPES

NAME	ORDERING CODE	FWHM Angle
RER-7 MD	C11232_RER-7-MD	±N/A°
RER-7-W	C11230_RER-7-W	±N/A°
RER-7 WW	C11231_RER-7-WW	±28°
RER-7 WW	C11254_RER-7-WW-PC	±29°

© Ledil Oy – PRELIMINARY - Subject to change without prior notice

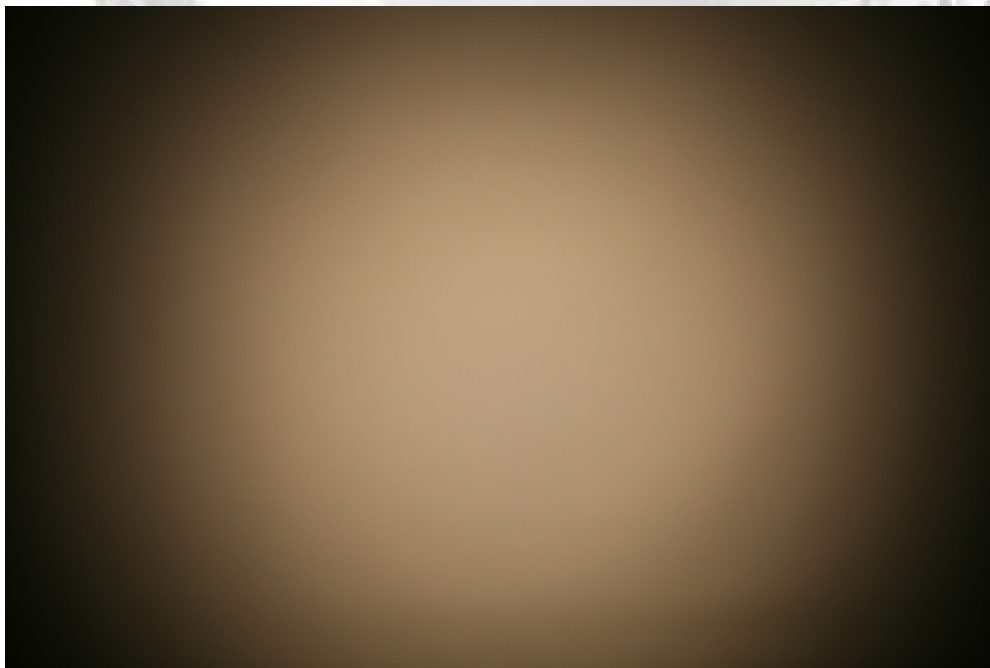
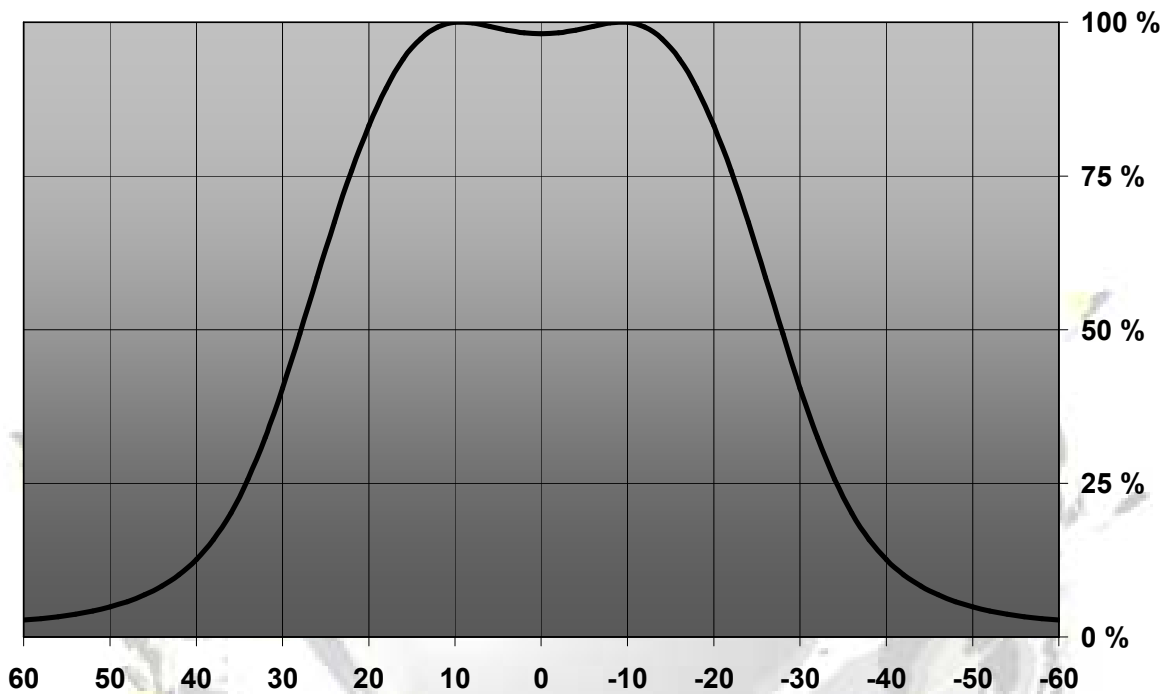
Ledil Oy  
Tehdaskatu 13  
FIN-24100 SALO, Finland

[www.ledil.com](http://www.ledil.com)  
email: [ledil@ledil.com](mailto:ledil@ledil.com)  
FAX: +358-2-733 8001

2010-03-01

## Measurement data & Drawing

Relative Intensity of C11231\_RER-7-WW



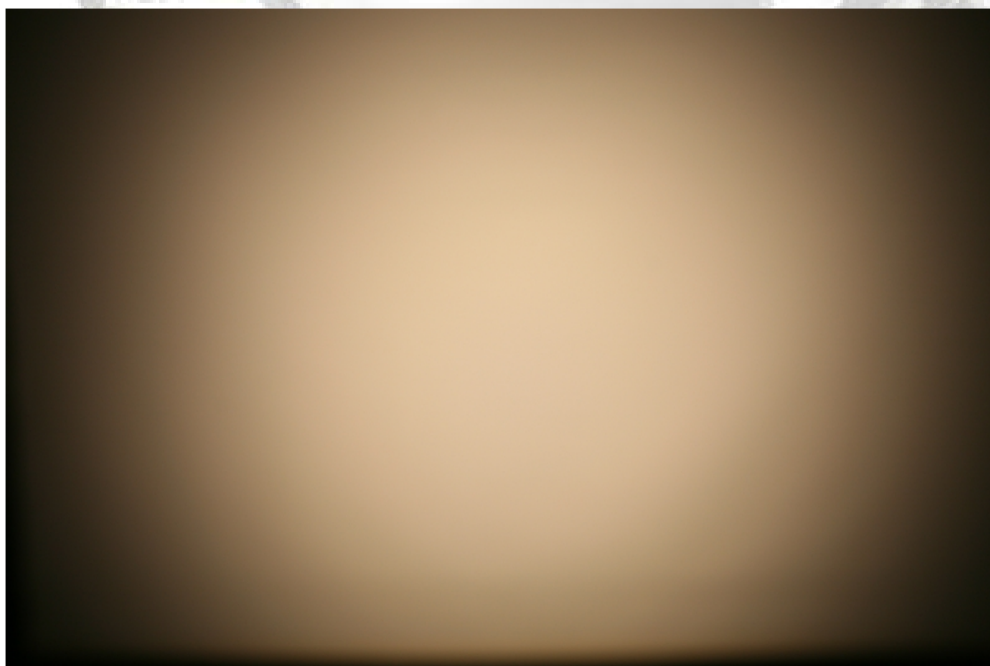
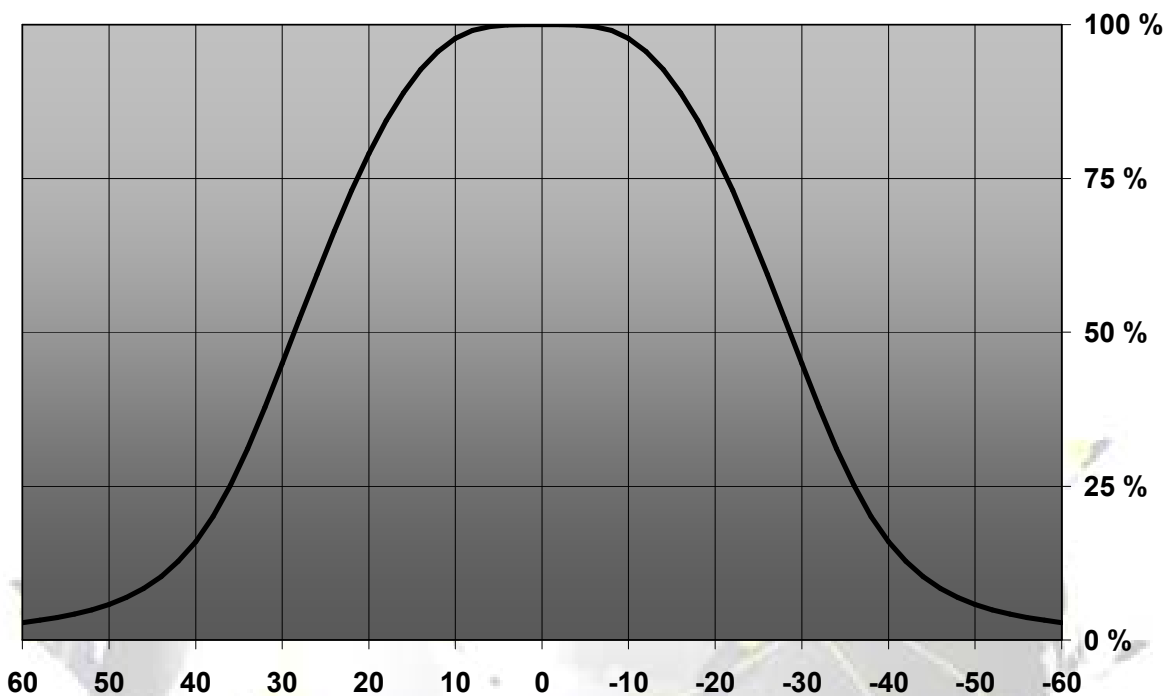
© Ledil Oy – PRELIMINARY - Subject to change without prior notice

Ledil Oy  
 Tehdaskatu 13  
 FIN-24100 SALO, Finland

[www.ledil.com](http://www.ledil.com)  
 email: [ledil@ledil.com](mailto:ledil@ledil.com)  
 FAX: +358-2-733 8001

2010-03-01

Relative Intensity of C11254\_RER-7-WW-PC

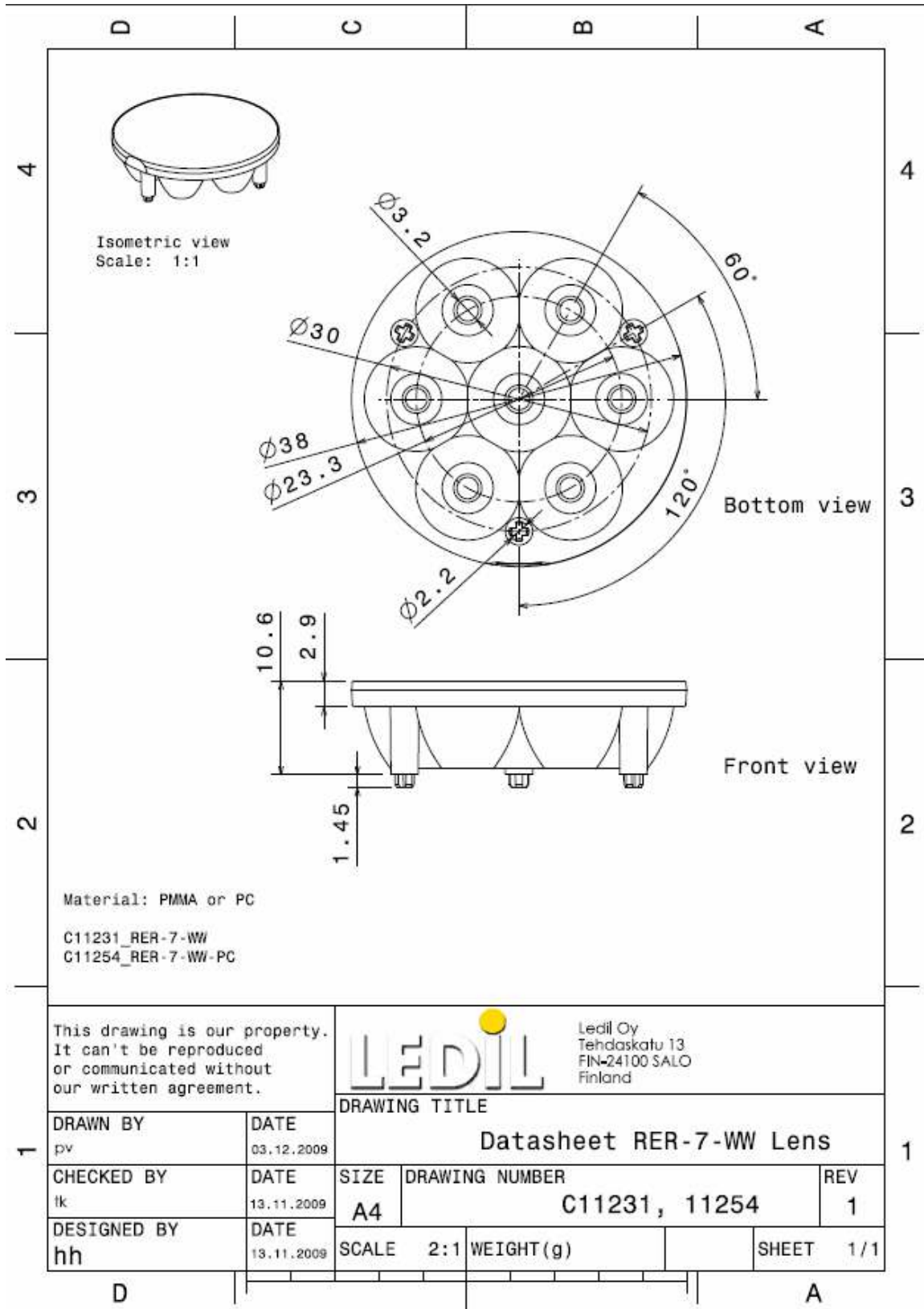


© Ledil Oy – PRELIMINARY - Subject to change without prior notice

Ledil Oy  
Tehdaskatu 13  
FIN-24100 SALO, Finland

[www.ledil.com](http://www.ledil.com)  
email: [ledil@ledil.com](mailto:ledil@ledil.com)  
FAX: +358-2-733 8001

2010-03-01



© Ledil Oy - PRELIMINARY - Subject to change without prior notice

Ledil Oy  
Tehdaskatu 13  
FIN-24100 SALO, Finland

[www.ledil.com](http://www.ledil.com)  
email: [ledil@ledil.com](mailto:ledil@ledil.com)  
FAX: +358-2-733 8001

2010-03-01