

## LOW PROFILE PANEL LENSES FOR PCB MOUNTED LEDs

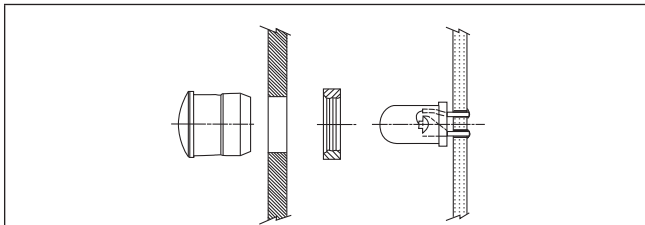
### SPECIFICATIONS

<b>MATERIAL</b>	Lens - Polycarbonate Ring - Polypropylene (U.L. Listed Materials)
<b>DESIGN</b>	Low profile lenses CMC 313 plain diffused, CMC 321, CML 325 & SMC 170 with fresnel rings. CMC 323 & CML 327 plain end lens.
<b>MOUNTING</b>	Mounts through front of panel, Retaining ring secures the lens in place. 5mm CMC & CML series mount in a .281" (7.2mm) hole on 3/8" centers, Panel thickness 1/32" to 1/4". 3mm (SMC 170) mounts in a .171" (4.4mm) hole on 1/4" centers. Panel thickness 1/32" to 3/32". 5mm CMC & CML series mount in a .281" (7.2mm) hole on 3/8" centers. Panel thickness 1/32" to 1/4".



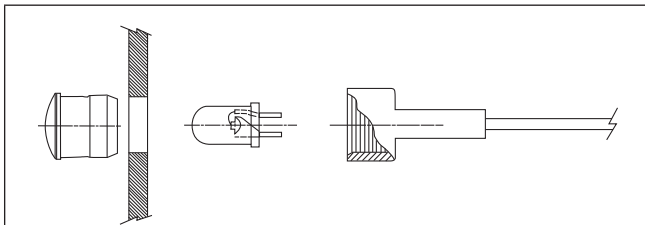
U.S. & Foreign Patents Issued and Pending

### PANEL MOUNTED LENS WITH PCB MOUNTED LED



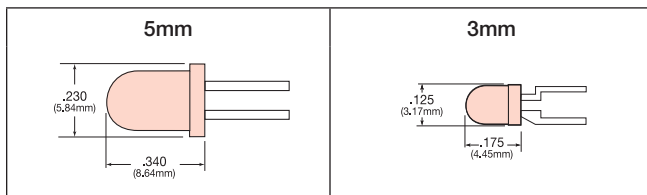
Install lens through panel, secure with retaining ring. The PCB mounted LED then slides into lens.

### PANEL MOUNTED LENS WITH CONXRITE CONNECTOR



Install lens through panel, insert LED into connector, press connector onto lens to complete installation.

### RECOMMENDED LEDs



### OUTLINE DRAWING

<p><b>CMC 313/CMC 321 CMC 323 (5mm)</b></p>	<p><b>CML 325/CML 327 (5mm)</b></p>	<p><b>RNG 268 (5mm)</b></p>	<p><b>SMC 170 (3mm)</b></p>	<p><b>RNG 132 (3mm)</b></p>
---	---	-----------------------------	-----------------------------	-----------------------------

### VERSATILITY

CLIPLITE® lenses, installed in a display panel, are used with PCB mounted LEDs. Lenses remain attached to the display or panel door while the LEDs are fixed to the PCB. The lenses are ideal when used together with the CONXRITE® connector assembly.

### BRIGHTNESS

CLIPLITE® lenses utilize fresnel rings to increase apparent brightness and viewing angle up to 180 degrees with either diffused or nondiffused LEDs.

### PROTECTION

CLIPLITE® lenses help prevent IC failures caused by electrostatic discharge (ESD). Introduction of ESD through an exposed panel mounted LED is capable of damaging or destroying a semiconductor. A CLIPLITE® mounted LED helps guard components from ESD up to 16KV while affording the LED physical protection.

### INSTALLATION

CLIPLITE® is inserted through panel opening, retaining ring pressed into place. PCB mounted LEDs slide into lenses when the panel cover is closed or the PCB card is inserted into the case.

### ORDERING CODES

MODEL	CMC 321	RTP	COLOR
SMC 170 (3mm) Fresnel L/Profile Lens			RTP Red Transparent
CMC 313 (5mm) Plain Diffused Lens			ATP Amber Transparent
CMC 321 (5mm) Fresnel L/Profile Lens			GTP Green Transparent
* CMC 323 (5mm) Plain End Lens			YTP Yellow Transparent
* CML 325 (5mm) Fresnel L/Profile Lens			BTP Blue Transparent
* CML 327 (5mm) Plain End Lens			CTP Clear Transparent
RNG 132 (3mm) Retaining Ring			
RNG 268 (5mm) Retaining Ring			

\* Denotes Clear only

### LENS STYLES

