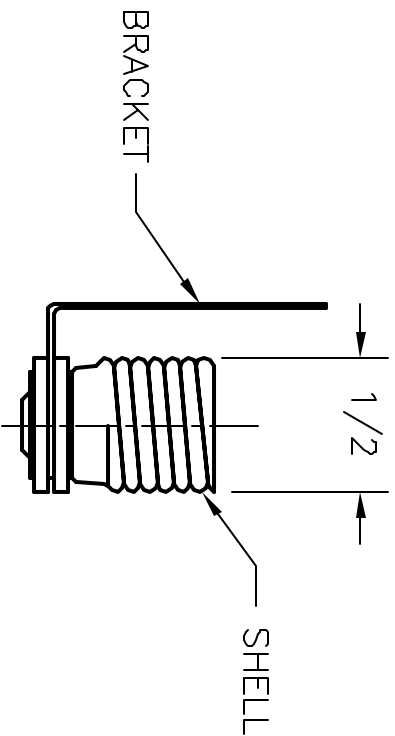
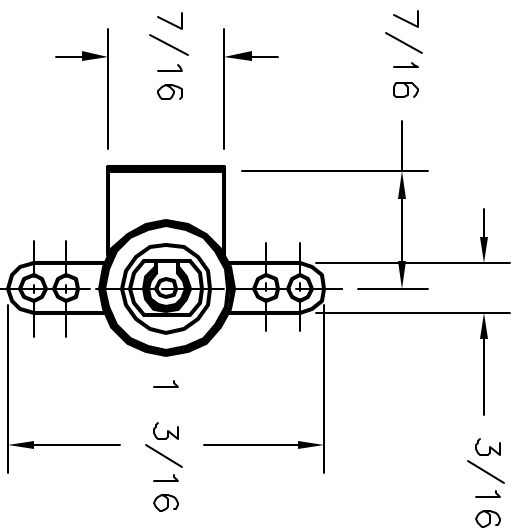


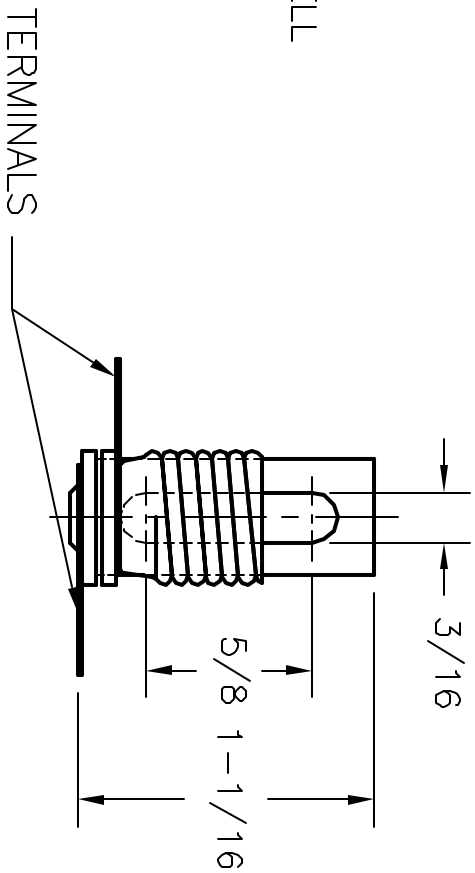
ALL RIGHTS RESERVED. NO PORTION OF THIS PUBLICATION, WHETHER IN WHOLE OR IN PART CAN BE REPRODUCED WITHOUT THE EXPRESS WRITTEN CONSENT OF SPC TECHNOLOGY.



REVISONS		DOC. NO.	SPC-F005	Effective	12/21/98	DCP No	890	
DOP #	REV	DESCRIPTION	DRAWN	DATE	CHECKD	DATE	APPRVD	DATE
1948	A	RELEASED	HYD	2/17/00	JC	2/25/00	DJC	4/5/00



- NOTES:**
1. SHELL: BRASS, ZINC & CLEAR PLATED.
 2. BRACKET: STEEL, ZINC & CLEAR PLATED
 3. TYPE: CANDELABRA SCREW BASE WITH (2) SOLDER TERMINALS AND BRACKET



DISCLAIMER:
 ALL STATEMENTS AND TECHNICAL INFORMATION CONTAINED HEREIN ARE BASED UPON INFORMATION AND/OR TESTS WE BELIEVE TO BE ACCURATE AND RELIABLE. SINCE CONDITIONS OF USE ARE BEYOND OUR CONTROL, THE USER SHALL DETERMINE THE SUITABILITY OF THE PRODUCT FOR THE INTENDED USE AND ASSUME ALL RISK AND LIABILITY WHATSOEVER IN CONNECTION THEREWITH.

TOLERANCES UNLESS OTHERWISE SPECIFIED
 FRACTIONAL ± 1/64
 DECIMAL .XXX ± 0.005
 ANGULAR ± 1°

SPC-F005.DWG

DRAWN BY:	DATE:
HAHSM ODISH	2/17/00
CHECKED BY:	DATE:
JOHN COLE	2/25/00
APPROVED BY:	DATE:
DANIEL CAREY	4/5/00

DRAWING TITLE:		SCALE:		SHEET:	
CANDELABRA SCREW BASE LAMPHOLDER		NTS		1 OF 1	
SIZE	DWG. NO.	ELECTRONIC FILE	REV		
A	SPC21731	16M1222.DWG	A		
U.O.M.: INCHES					

