



## General data

Signal lamps with lamp socket. The standard illumination is by a filament lamp; illumination with LED is available on request. The mm specification in the product name indicates the appropriate mounting hole diameter of the signal lamps. For further signal lamps, refer to the „8 mm“ and „LUMOTAST“ pushbutton ranges as well as the signal indicators of the „RAFIX“ control component ranges.

3

## Content

<b>Signal lamps with lamp socket W 2 x 4.6d, 9.1 mm</b>	<b>3 - 32</b>
Signal lamps with lamp socket W 2 x 4.6d, 9.1 mm, round lens	3 - 33
<b>Signal lamps with lamp socket T 4.6, 9.1 mm</b>	<b>3 - 34</b>
Signal lamps with lamp socket T 4.6, 9.1 mm, round lens	3 - 35
Signal lamps with lamp socket T 4.6, 9.1 mm, round lens	3 - 35
<b>Signal lamps with lamp socket W 2x4,6d, 11.1 mm</b>	<b>3 - 36</b>
Signal lamps with lamp socket W 2x4,6d, 11.1 mm, round lens	3 - 37
<b>Signal lamps with lamp socket BA 9s (MBC/MCC), 16.2 mm</b>	<b>3 - 38</b>
Signal lamps with lamp socket BA 9s (MBC/MCC), 16.2 mm, round lens	3 - 39
Signal lamps with lamp socket BA 9s (MBC/MCC), 16.2 mm, round lens	3 - 39
<b>Signal lamps with lamp socket E 10 (MES), 16.2 mm</b>	<b>3 - 40</b>
Signal lamps with lamp socket E 10 (MES), 16.2 mm, round lens	3 - 41
Signal lamps with lamp socket E 10 (MES), 16.2 mm, round lens	3 - 41
Signal lamps with lamp socket E 10 (MES), 16.2 mm, round lens	3 - 42
<b>Signal lamps with lamp socket BA 9s (MBC/MCC), 18.2 mm</b>	<b>3 - 44</b>
Signal lamps with lamp socket BA 9s (MBC/MCC), 18.2 mm, round lens	3 - 45
<b>Signal lamps with lamp socket E 14, 22.3 mm</b>	<b>3 - 46</b>
Signal lamps with lamp socket E 14, IP40, 22.3 mm	3 - 47
Signal lamps with lamp socket E 14, 22.3 mm, screw-on lens, IP40	3 - 47
<b>Signal lamps with lamp socket E 14, 30.5 mm</b>	<b>3 - 48</b>
Signal lamps with lamp socket E 14, IP40, 30.5 mm	3 - 49
Signal lamps with lamp socket E 14, IP40, 30.5 mm	3 - 49
Signal lamps with lamp socket E 14, IP40, 30.5 mm	3 - 50
<b>Signal lamps with lamp socket BA 15d, 30.5 mm</b>	<b>3 - 52</b>
Signal lamps with lamp socket BA 15d, IP40, 30.5 mm	3 - 53
Signal lamps with lamp socket BA 15d, IP40, 30.5 mm	3 - 54
Signal lamps with lamp socket BA 15d, IP40, 30.5 mm	3 - 54

With  
Socket

## Signal lamps with lamp socket W 2 x 4.6d, 9.1 mm



### Technical data

#### General information

Form of lens	round
Colour of lens	see order block
Diameter of collar	11 mm

#### Dimensions

Overall height	7 mm
Mounting depth	25.5 mm
Mounting hole	9.1 mm

#### Mechanical design

Mounting	ring nut
Terminals	quick connector 2.8 x 0.5 tin plated
Lamp socket	W 2 x 4.6d
Lamp	filament lamp

#### Electrical characteristics

Voltage limit max.	42 V
Power limit max.	1.2 W

#### Other specifications

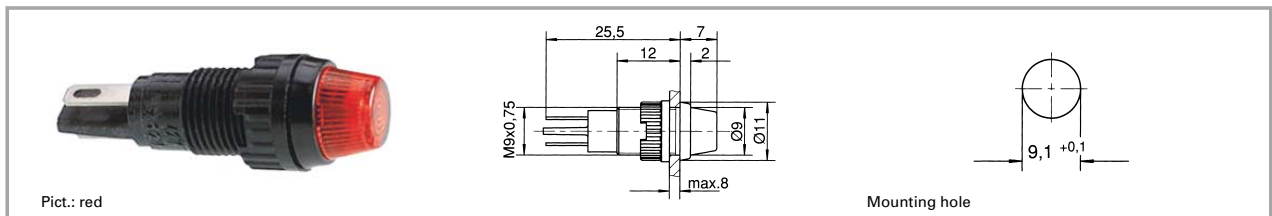
Degree of protection from front side	IP40
Weight	1 g

3

### Accessories Signal lamps with lamp socket W 2 x 4.6d, 9.1 mm

With Socket	Description	Photo	Order no.	Page
	Filament lamp, W 2 x 4.6d base, 24 - 30 V		<b>1.90.120.005/0000</b>	5 - 4
	Filament lamp, W 2 x 4.6d base, 60 V		<b>1.90.120.009/0000</b>	5 - 4
	Filament lamp, W 2 x 4.6d base, 48 V		<b>1.90.120.010/0000</b>	5 - 4
	Filament lamp, W 2 x 4.6d base, 24 V		<b>1.90.120.011/0000</b>	5 - 4
	Filament lamp, W 2 x 4.6d base, 12 V		<b>1.90.120.012/0000</b>	5 - 4
	Filament lamp, W 2 x 4.6d base, 6 V		<b>1.90.120.013/0000</b>	5 - 4
	Fixing spanner M 9, M 10		<b>5.58.002.025/0105</b>	5 - 23

## Signal lamps with lamp socket W 2 x 4.6d, 9.1 mm, round lens



Voltage limit max.	Power limit max.	Lamp	Colour of lens	Order no. complete	Order no. single parts	
					Housing	Lens
42 V	1.2 W	filament lamp	transparent colourless	1.66.001.011/1002	<b>1.66.001.026/0000</b>	<b>5.49.255.002/1002</b>
42 V	1.2 W	filament lamp	transparent red	1.66.001.011/1301	<b>1.66.001.026/0000</b>	<b>5.49.255.002/1301</b>
42 V	1.2 W	filament lamp	transparent yellow	1.66.001.011/1402	<b>1.66.001.026/0000</b>	<b>5.49.255.002/1402</b>
42 V	1.2 W	filament lamp	transparent green	1.66.001.011/1502	<b>1.66.001.026/0000</b>	<b>5.49.255.002/1502</b>
42 V	1.2 W	filament lamp	transparent blue	1.66.001.011/1601	<b>1.66.001.026/0000</b>	<b>5.49.255.002/1601</b>

Technical data see page 3 - 32

Please order luminous elements separately.

3

With Socket

## Signal lamps with lamp socket T 4.6, 9.1 mm



### Technical data

#### General information

Form of lens	see order block
Colour of lens	see order block
Diameter of collar	11 mm

#### Dimensions

Overall height	see order block
Mounting depth	30.5 mm
Mounting hole	9.1 mm

#### Mechanical design

Mounting	ring nut
Terminals	solder terminals
Lamp socket	T 4.6
Lamp	filament lamp

#### Electrical characteristics

Voltage limit max.	42 V
Power limit max.	1 W

#### Other specifications

Degree of protection from front side	IP40
Weight	1 g

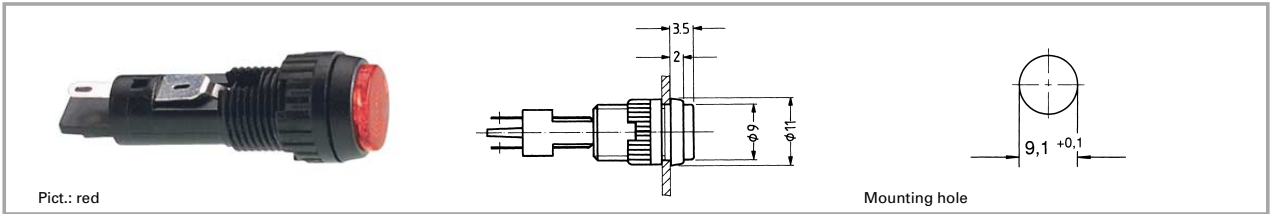
3

### Accessories Signal lamps with lamp socket T 4.6, 9.1 mm

Description	Photo	Order no.	Page
Filament lamp, T 4.6 base, 12 V		<b>1.90.100.012/0000</b>	5 - 6
Filament lamp, T 4.6 base, 24 V		<b>1.90.100.013/0000</b>	5 - 6
Fixing spanner M 9, M 10		<b>5.58.002.025/0105</b>	5 - 23

With Socket

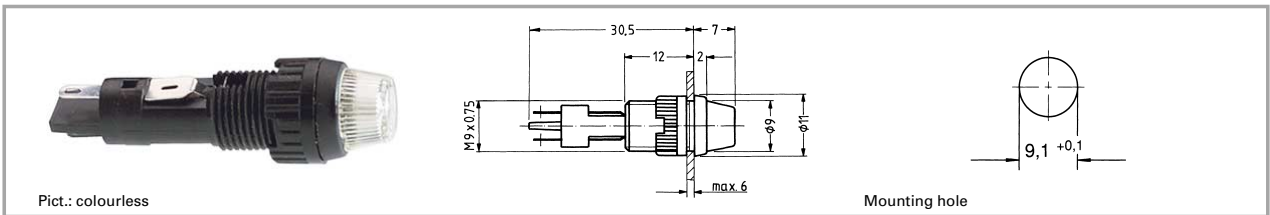
## Signal lamps with lamp socket T 4.6, 9.1 mm, round lens



Voltage limit max.	Lamp socket	Lamp	Colour of lens	Order no. complete	Order no. single parts	
					Housing	Lens
42 V	T 4.6	filament lamp	transparent colourless	1.02.157.001/1002	<b>1.02.157.021/0000</b>	<b>5.49.255.001/1002</b>
42 V	T 4.6	filament lamp	transparent red	1.02.157.001/1307	<b>1.02.157.021/0000</b>	<b>5.49.255.001/1307</b>
42 V	T 4.6	filament lamp	transparent yellow	1.02.157.001/1403	<b>1.02.157.021/0000</b>	<b>5.49.255.001/1403</b>
42 V	T 4.6	filament lamp	transparent green	1.02.157.001/1510	<b>1.02.157.021/0000</b>	<b>5.49.255.001/1510</b>

Technical data see page 3 - 34

## Signal lamps with lamp socket T 4.6, 9.1 mm, round lens



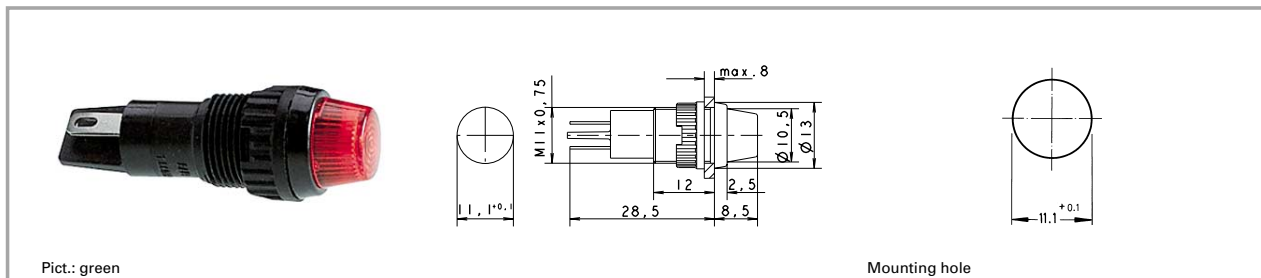
Voltage limit max.	Lamp socket	Lamp	Colour of lens	Order no. complete	Order no. single parts	
					Housing	Lens
42 V	T 4.6	filament lamp	transparent colourless	1.02.157.011/1002	<b>1.02.157.021/0000</b>	<b>5.49.255.002/1002</b>
42 V	T 4.6	filament lamp	transparent red	1.02.157.011/1301	<b>1.02.157.021/0000</b>	<b>5.49.255.002/1301</b>
42 V	T 4.6	filament lamp	transparent yellow	1.02.157.011/1402	<b>1.02.157.021/0000</b>	<b>5.49.255.002/1402</b>
42 V	T 4.6	filament lamp	transparent green	1.02.157.011/1502	<b>1.02.157.021/0000</b>	<b>5.49.255.002/1502</b>

Technical data see page 3 - 34

3

With Socket

## Signal lamps with lamp socket W 2x4,6d, 11.1 mm



### Technical data

#### General information

Form of lens	round
Colour of lens	see order block
Diameter of collar	11

#### Electrical characteristics

Voltage limit max.	42 V
Power limit max.	1.2 W

#### Dimensions

Overall height	8.5 mm
Mounting depth	28.5 mm
Mounting hole	11.10 mm

#### Other specifications

Degree of protection from front side	IP40
Weight	1.4 g

#### Mechanical design

Mounting	ring nut
Terminals	quick connector A 2.8 x 0.5
Lamp socket	W 2 x 4.6 d
Lamp	filament lamp

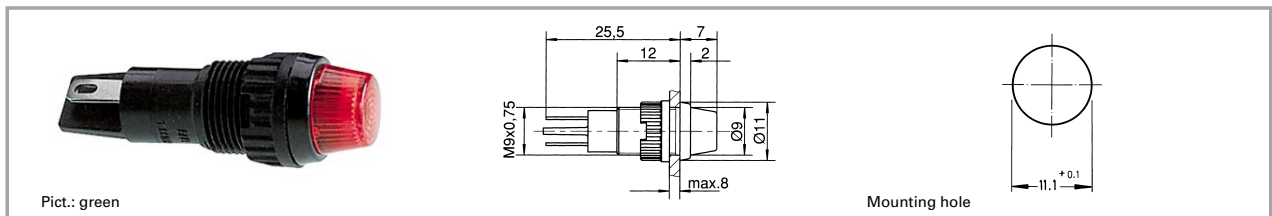
3

### Accessories Signal lamps with lamp socket W 2x4,6d

Description	Photo	Order no.	Page
Filament lamp, W 2 x 4.6d base, 24 V		<b>1.90.120.005/0000</b>	5 - 4
Filament lamp, W 2 x 4.6d base, 60 V		<b>1.90.120.009/0000</b>	5 - 4
Filament lamp, W 2 x 4.6d base, 48 V		<b>1.90.120.010/0000</b>	5 - 4
Filament lamp, W 2 x 4.6d base, 24 V		<b>1.90.120.011/0000</b>	5 - 4
Filament lamp, W 2 x 4.6d base, 12 V		<b>1.90.120.012/0000</b>	5 - 4
Filament lamp, W 2 x 4.6d base, 6 V		<b>1.90.120.013/0000</b>	5 - 4
Protective sleeve made of Buna N (NBR), 8 x 30		5.52.011.023/0100	
Fixing spanner M 11, M 13		<b>5.58.002.026/0105</b>	5 - 23

With Socket

## Signal lamps with lamp socket W 2x4,6d, 11.1 mm, round lens



Voltage limit max.	Power limit max.	Lamp socket	Colour of lens	Order no. without lens	Note
42 V	1.2 W	W 2 x 4.6 d		<b>1.66.003.001/0000</b>	Please include the desired lens in your order.

Technical data see page 3 - 36

### Accessories:

- Lens transparent colourless: **5.49.255.003/1002**
- Lens transparent red: **5.49.255.003/1301**
- Lens transparent yellow: **5.49.255.003/1402**
- Lens transparent green: **5.49.255.003/1502**
- Lens transparent blue: **5.49.255.003/1601**

Please order luminous elements separately.

3

With  
Socket

## Signal lamps with lamp socket BA 9s (MBC/MCC), 16.2 mm



### Technical data

#### General information

Form of lens see order block  
 Colour of lens see order block  
 Diameter of collar see order block

#### Dimensions

Overall height see order block  
 Mounting depth 45.8 mm  
 Mounting hole 16.2 mm

#### Mechanical design

Mounting ring nut  
 Terminals quick connector 6.3 x 0.8 /  
 2 x 2.8 x 0.8 tin plated  
 Lamp socket BA 9 s  
 Lamp filament lamp

#### Electrical characteristics

Voltage limit max. 250 V  
 Power limit max. 2 W

#### Other specifications

Degree of protection from front side see order block  
 Weight 10 g  
 Approvals SEV at 2 W

3

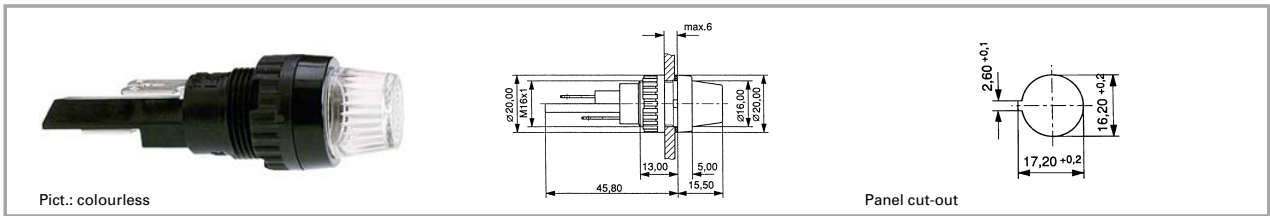
### Accessories Signal lamps with lamp socket BA 9s (MBC/MCC), 16.2 mm

With  
Socket

Description	Photo	Order no.	Page
Protective sleeve for terminals made of Buna N (NBR)		<b>5.52.011.027/0100</b>	
Fixing spanner M 15, M 16		<b>5.58.002.019/0105</b>	5 - 23



## Signal lamps with lamp socket BA 9s (MBC/MCC), 16.2 mm, round lens



Voltage limit max.	Power limit max.	Degree of protection from front side	Colour of lens	Order no. complete	Order no. single parts	
					Housing	Lens
250 V	2 W	IP40	transparent colourless	1.63.004.001/1002	<b>1.63.004.091/0000</b>	<b>5.49.205.013/1002</b>
250 V	2 W	IP40	transparent red	1.63.004.001/1301	<b>1.63.004.091/0000</b>	<b>5.49.205.013/1301</b>
250 V	2 W	IP40	transparent yellow	1.63.004.001/1402	<b>1.63.004.091/0000</b>	<b>5.49.205.013/1402</b>
250 V	2 W	IP40	transparent green	1.63.004.001/1502	<b>1.63.004.091/0000</b>	<b>5.49.205.013/1502</b>

Technical data see page 3 - 38

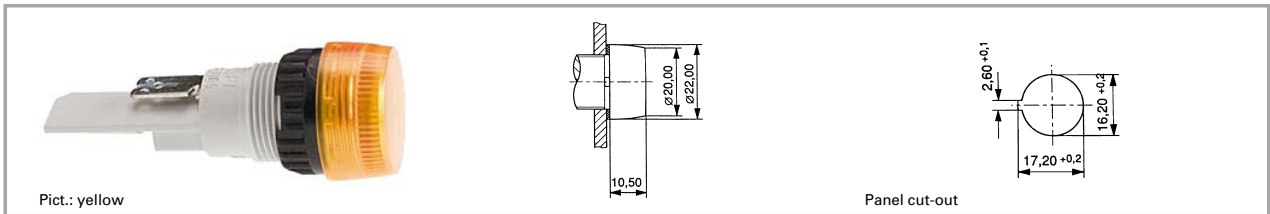
Technical data lamps see chapter 5

**Accessories:**

- Filament lamp, BA 9s base (MBC/MCC), 12 - 15 V: **1.90.060.132/0000**
- Filament lamp, BA 9s base (MBC/MCC), 24 - 30 V: **1.90.060.133/0000**
- Filament lamp, BA 9s base (MBC/MCC), 110 - 130 V: **1.90.060.137/0000**
- Neon lamp BA 9s (MBC/MCC), 220 V AC (red): **1.90.560.102/0000**
- Neon lamp, BA 9s base (MBC/MCC), 220 V AC (green): **1.90.560.104/0000**

3

## Signal lamps with lamp socket BA 9s (MBC/MCC), 16.2 mm, round lens



Voltage limit max.	Power limit max.	Degree of protection from front side	Colour of lens	Order no. complete	Order no. single parts	
					Housing	Lens
250 V	2 W	IP65	transparent colourless	1.63.004.010/1002	<b>1.63.004.100/0000</b>	<b>5.49.227.007/1002</b>
250 V	2 W	IP65	transparent red	1.63.004.010/1301	<b>1.63.004.100/0000</b>	<b>5.49.227.007/1301</b>
250 V	2 W	IP65	transparent yellow	1.63.004.010/1402	<b>1.63.004.100/0000</b>	<b>5.49.227.007/1402</b>
250 V	2 W	IP65	transparent green	1.63.004.010/1502	<b>1.63.004.100/0000</b>	<b>5.49.227.007/1502</b>

Technical data see page 3 - 38

Technical data lamps see chapter 5

**Accessories:**

- Filament lamp, BA 9s base (MBC/MCC), 12 - 15 V: **1.90.060.003/0000**
- Filament lamp, BA 9s base (MBC/MCC), 24 - 30 V: **1.90.060.014/0000**
- Neon lamp BA 9s (MBC/MCC), 220 V AC: **1.90.560.002/0000**

With Socket

## Signal lamps with lamp socket E 10 (MES), 16.2 mm



Pict.: red

Screw terminals, yellow

Panel cut-out

### Technical data

#### General information

Form of lens	round
Colour of lens	see order block
Diameter of collar	20 mm

#### Dimensions

Overall height	see order block
Mounting depth	see order block
Mounting hole	16.2 mm

#### Mechanical design

Mounting	ring nut
Terminals	see order block
Lamp socket	E 10
Lamp	filament lamp

#### Electrical characteristics

Voltage limit max.	250 V
Power limit max.	2 W

#### Other specifications

Degree of protection from front side	IP40
Weight	11 g
Approvals at 2W (T=°C)	VDE

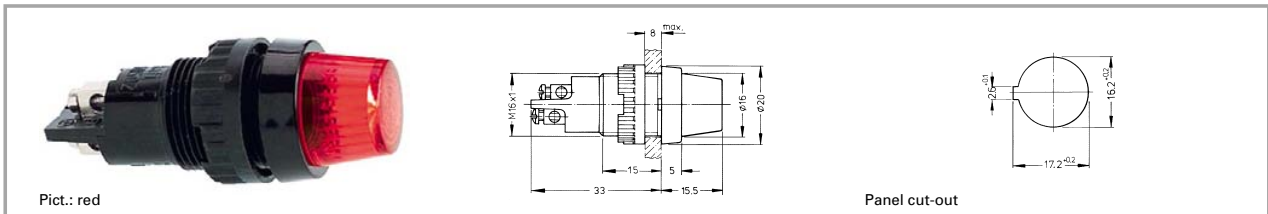
3

### Accessories Signal lamps with lamp socket E 10 (MES), 16.2 mm

Description	Photo	Order no.	Page
Filament lamp, E 10 (MES) base, 24 - 30 V		<b>1.90.010.033/0000</b>	5 - 11
Filament lamp, E 10 (MES) base, 110 - 130 V		<b>1.90.010.037/0000</b>	5 - 11
Protective sleeve for terminals		5.52.011.026/0100	
Fixing spanner M 15, M 16		<b>5.58.002.019/0105</b>	5 - 23

With Socket

## Signal lamps with lamp socket E 10 (MES), 16.2 mm, round lens



Voltage limit max.	Power limit max.	Terminals	Colour of lens	Order no. complete	Order no. single parts	
					Housing	Lens
250 V	2 W	screw terminals nickel-plated	transparent colourless	<b>1.60.502.102/1002</b>	1.60.502.091/0000	<b>5.49.205.013/1002</b>
250 V	2 W	screw terminals nickel-plated	transparent red	<b>1.60.502.102/1301</b>	1.60.502.091/0000	<b>5.49.205.013/1301</b>
250 V	2 W	screw terminals nickel-plated	transparent yellow	<b>1.60.502.102/1402</b>	1.60.502.091/0000	<b>5.49.205.013/1402</b>
250 V	2 W	screw terminals nickel-plated	transparent green	<b>1.60.502.102/1502</b>	1.60.502.091/0000	<b>5.49.205.013/1502</b>
250 V	2 W	screw terminals nickel-plated	transparent blue	<b>1.60.502.102/1601</b>	1.60.502.091/0000	<b>5.49.205.013/1601</b>

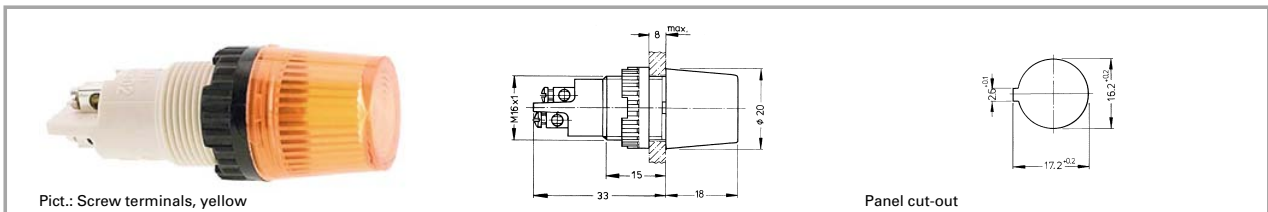
Technical data see page 3 - 40

Approval: VDE, SEV T70°C.

Versions with 2.8 x 0.8 quick-connect terminals available on request.

3

## Signal lamps with lamp socket E 10 (MES), 16.2 mm, round lens



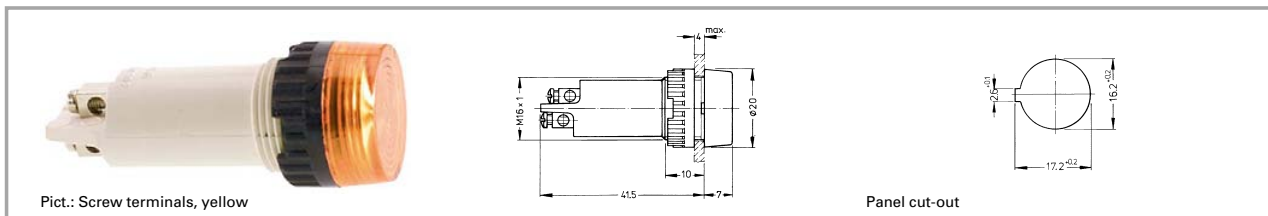
Voltage limit max.	Power limit max.	Terminals	Colour of lens	Order no. complete	Order no. single parts	
					Housing	Lens
250 V	2 W	screw terminals nickel-plated	transparent colourless	1.60.502.001/1002	<b>1.60.502.099/0000</b>	<b>5.49.227.004/1002</b>
250 V	2 W	screw terminals nickel-plated	transparent red	1.60.502.001/1301	<b>1.60.502.099/0000</b>	<b>5.49.227.004/1301</b>
250 V	2 W	screw terminals nickel-plated	transparent yellow	1.60.502.001/1402	<b>1.60.502.099/0000</b>	<b>5.49.227.004/1402</b>
250 V	2 W	screw terminals nickel-plated	transparent green	1.60.502.001/1502	<b>1.60.502.099/0000</b>	<b>5.49.227.004/1502</b>
250 V	2 W	screw terminals nickel-plated	transparent blue	1.60.502.001/1601	<b>1.60.502.099/0000</b>	<b>5.49.227.004/1601</b>

Technical data see page 3 - 40

Approval: VDE, SEV T70°C.

With Socket

## Signal lamps with lamp socket E 10 (MES), 16.2 mm, round lens



Pict.: Screw terminals, yellow

Panel cut-out

Voltage limit max.	Power limit max.	Terminals	Colour of lens	Order no. complete	Order no. single parts	
					Housing	Lens
250 V	2 W	screw terminals nickel-plated	transparent colourless	1.60.502.002/1002	<b>1.60.502.098/0000</b>	<b>5.49.227.005/1002</b>
250 V	2 W	screw terminals nickel-plated	transparent red	1.60.502.002/1301	<b>1.60.502.098/0000</b>	<b>5.49.227.005/1301</b>
250 V	2 W	screw terminals nickel-plated	transparent yellow	1.60.502.002/1402	<b>1.60.502.098/0000</b>	<b>5.49.227.005/1402</b>
250 V	2 W	screw terminals nickel-plated	transparent green	1.60.502.002/1502	<b>1.60.502.098/0000</b>	<b>5.49.227.005/1502</b>
250 V	2 W	screw terminals nickel-plated	transparent blue	1.60.502.002/1601	<b>1.60.502.098/0000</b>	<b>5.49.227.005/1601</b>

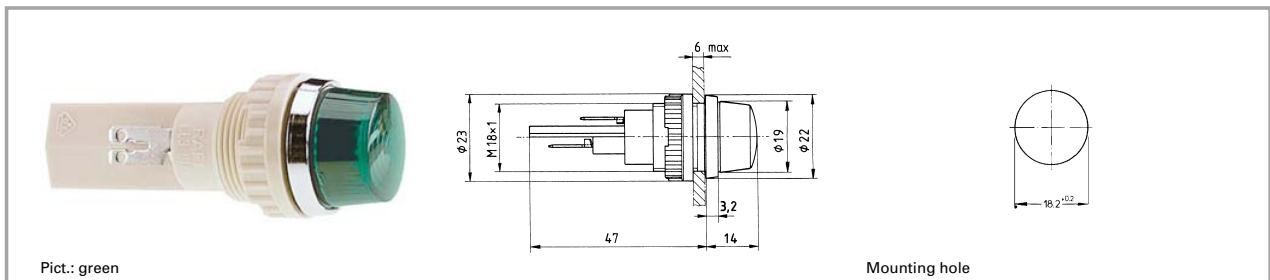
3

Technical data see page 3 - 40

Approval: VDE, SEV T70°C.

With  
Socket

## Signal lamps with lamp socket BA 9s (MBC/MCC), 18.2 mm



### Technical data

#### General information

Form of lens	round
Colour of lens	see order block
Diameter of collar	22 mm

#### Electrical characteristics

Voltage limit max.	250 V
Power limit max.	2 W

#### Dimensions

Overall height	14 mm
Mounting depth	47 mm
Mounting hole	18.2 mm

#### Other specifications

Degree of protection from front side	IP65
Weight	22 g
Approvals	VDE T120°C / 2 W

#### Mechanical design

Mounting	ring nut
Terminals	quick connector 6.3 x 0.8 / 2 x 2.8 x 0.8 tin plated
Lamp socket	BA 9 s
Lamp	filament lamp

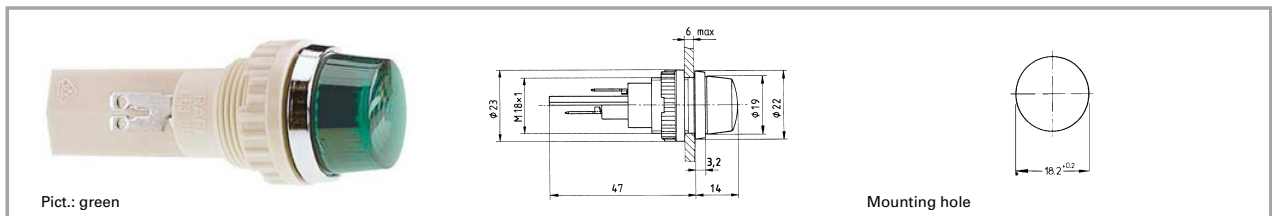
3

### Accessories Signal lamps with lamp socket BA 9s (MBC/MCC), 18.2 mm

With Socket

Description	Photo	Order no.	Page
Filament lamp, BA 9s base (MBC/MCC), 12 - 15 V		<b>1.90.060.132/0000</b>	5 - 8
Filament lamp, BA 9s base (MBC/MCC), 24 - 30 V		<b>1.90.060.133/0000</b>	5 - 8
Filament lamp, BA 9s base (MBC/MCC), 110 - 130 V		<b>1.90.060.137/0000</b>	5 - 8
Protective sleeve for terminals made of Buna N (NBR)		5.52.011.027/0100	

## Signal lamps with lamp socket BA 9s (MBC/MCC), 18.2 mm, round lens



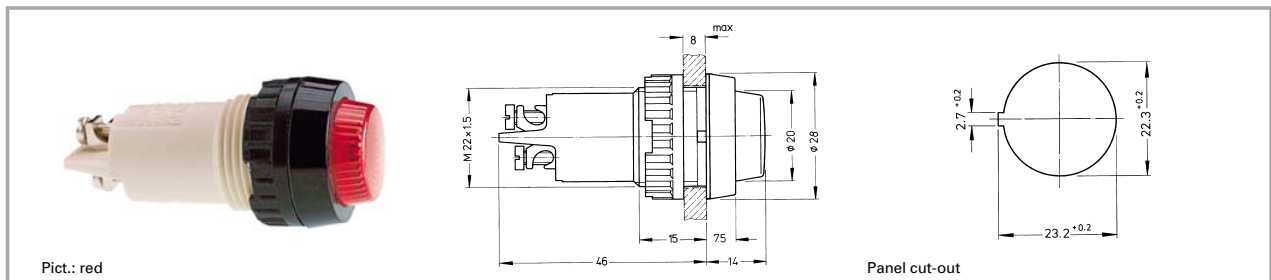
Voltage limit max.	Power limit max.	Lamp	Colour of lens	Order no. complete	Order no. single parts	
					Housing	Lens
250 V	2 W	filament lamp	transparent colourless	<b>1.63.018.001/1002</b>	1.63.018.091/0000	5.49.205.018/1002
250 V	2 W	filament lamp	transparent red	<b>1.63.018.001/1301</b>	1.63.018.091/0000	5.49.205.018/1301
250 V	2 W	filament lamp	transparent yellow	<b>1.63.018.001/1402</b>	1.63.018.091/0000	5.49.205.018/1402
250 V	2 W	filament lamp	transparent green	<b>1.63.018.001/1502</b>	1.63.018.091/0000	5.49.205.018/1502

Technical data see page 3 - 44

3

With  
Socket

## Signal lamps with lamp socket E 14, 22.3 mm



### Technical data

#### General information

Form of lens	round
Colour of lens	see order block
Diameter of collar	28 mm

#### Electrical characteristics

Voltage limit max.	250 V
Power limit max.	2 W

#### Dimensions

Overall height	14 mm
Mounting depth	46 mm
Mounting hole	22.3 mm

#### Other specifications

Degree of protection from front side	see order block
Weight	21 g
Approvals 1W (T100°C)	VDE
Approvals 2W (T85°C)	VDE, DEMKO, NEMKO

#### Mechanical design

Mounting	ring nut
Terminals	see order block
Lamp socket	E 14
Lamp	filament lamp

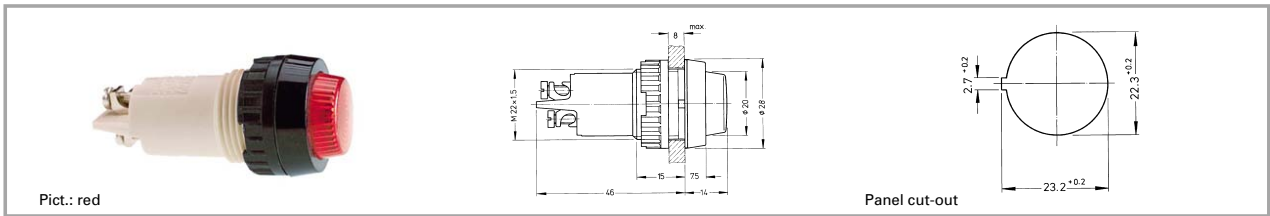
3

### Accessories Signal lamps with lamp socket E 14, 22.3 mm

Description	Photo	Order no.	Page
Filament lamp, E 14 base, 24 - 30 V		<b>1.90.020.033/0000</b>	5 - 12
Sealing ring for IP65		5.30.075.010/0100	5 - 27
Protection against contact to VBG 4		<b>5.50.240.063/0209</b>	5 - 28
Protective sleeve for terminals made of Buna N (NBR)		<b>5.52.011.029/0100</b>	
Fixing spanner M 20, M 22, for ring nut		<b>5.58.002.018/0105</b>	5 - 23

With Socket

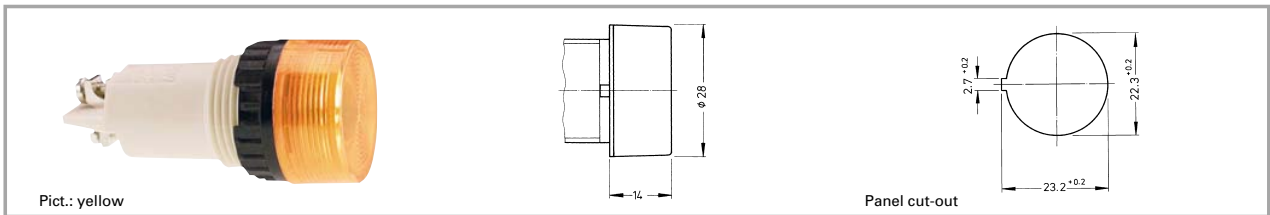
## Signal lamps with lamp socket E 14, IP40, 22.3 mm



Voltage limit max.	Degree of protection from front side	Terminals	Colour of lens	Order no. complete	Order no. single parts	
					Housing	Lens
250 V	IP40	screw terminals brass nickel-plated	transparent colourless	1.61.012.011/1002	<b>1.61.012.099/0000</b>	5.00.350.726/1002
250 V	IP40	screw terminals brass nickel-plated	transparent red	1.61.012.011/1301	<b>1.61.012.099/0000</b>	5.00.350.726/1301
250 V	IP40	screw terminals brass nickel-plated	transparent yellow	1.61.012.011/1402	<b>1.61.012.099/0000</b>	5.00.350.726/1402
250 V	IP40	screw terminals brass nickel-plated	transparent green	1.61.012.011/1502	<b>1.61.012.099/0000</b>	5.00.350.726/1502

Technical data see page 3 - 46

## Signal lamps with lamp socket E 14, 22.3 mm, screw-on lens, IP40



Voltage limit max.	Degree of protection from front side	Terminals	Colour of lens	Order no. complete	Order no. single parts	
					Housing	Lens
250 V	IP40	screw terminals brass nickel-plated	transparent colourless	1.61.012.061/1002	<b>1.61.012.099/0000</b>	<b>5.49.229.006/1002</b>
250 V	IP40	screw terminals brass nickel-plated	transparent red	1.61.012.061/1301	<b>1.61.012.099/0000</b>	<b>5.49.229.006/1301</b>
250 V	IP40	screw terminals brass nickel-plated	transparent yellow	1.61.012.061/1402	<b>1.61.012.099/0000</b>	<b>5.49.229.006/1402</b>
250 V	IP40	screw terminals brass nickel-plated	transparent green	1.61.012.061/1502	<b>1.61.012.099/0000</b>	<b>5.49.229.006/1502</b>

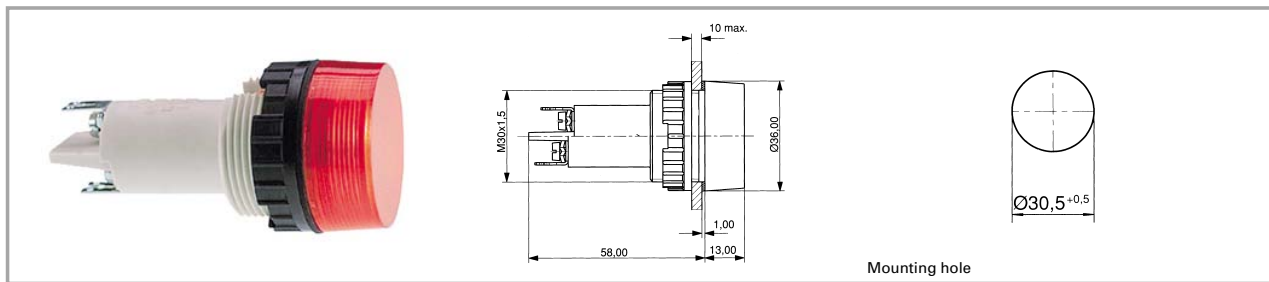
Technical data see page 3 - 46

3

With Socket



## Signal lamps with lamp socket E 14, 30.5 mm



### Technical data

#### General information

Form of lens	round
Colour of lens	see order block
Diameter of collar	36 mm

#### Dimensions

Overall height	see order block
Mounting depth	58 mm
Mounting hole	30.5 mm

#### Mechanical design

Mounting	ring nut
Terminals	clamp + quick connector for 2 x 2.8 x 0.8 mm
Lamp socket	E 14
Lamp	filament lamp

#### Electrical characteristics

Voltage limit max.	250 V
Power limit max.	5 W

#### Other specifications

Degree of protection from front side	see order block
Weight	40 g

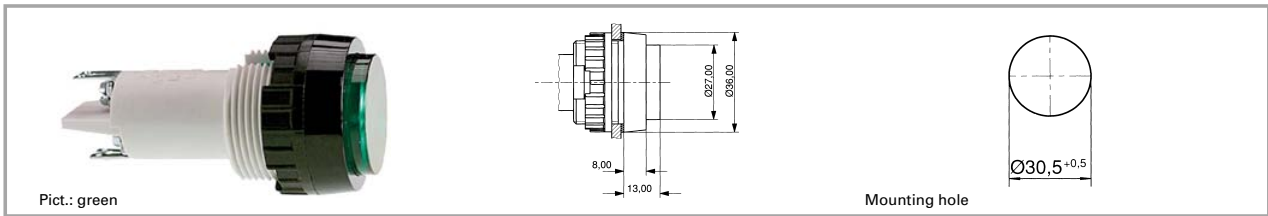
3

### Accessories Signal lamps with lamp socket E 14, 30.5 mm

With  
Socket

Description	Photo	Order no.	Page
Protection against contact to VBG 5		<b>5.50.240.065/0200</b>	5 - 28
Protective sleeve for terminals		<b>5.52.011.031/0100</b>	
Fixing spanner M 25, M 30		<b>5.58.002.020/0105</b>	5 - 23

## Signal lamps with lamp socket E 14, IP40, 30.5 mm



Voltage limit max.	Power limit max.	Degree of protection from front side	Colour of lens	Order no. complete	Order no. single parts	
					Housing	Lens
250 V	5 W	IP40	transparent colourless	1.61.021.004/1002	<b>1.61.021.099/0000</b>	<b>5.00.350.013/1002</b>
250 V	5 W	IP40	transparent red	1.61.021.004/1301	<b>1.61.021.099/0000</b>	<b>5.00.350.013/1301</b>
250 V	5 W	IP40	transparent yellow	1.61.021.004/1402	<b>1.61.021.099/0000</b>	<b>5.00.350.013/1402</b>
250 V	5 W	IP40	transparent green	1.61.021.004/1502	<b>1.61.021.099/0000</b>	<b>5.00.350.013/1502</b>

Technical data see page 3 - 48

Technical data lamps see chapter 5

**Accessories:**

Filament lamp, E 14 base, 24 - 30 V: **1.90.020.033/0000**

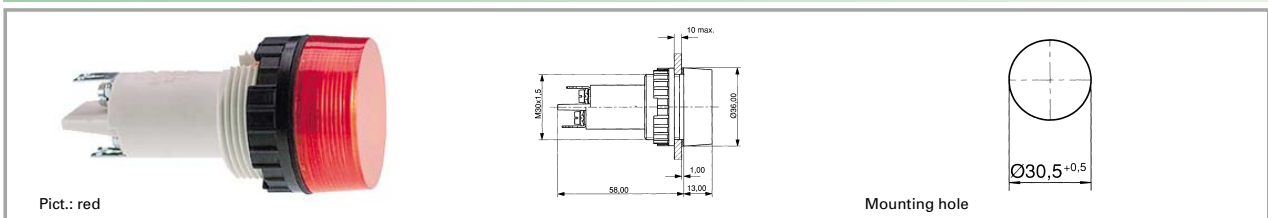
Filament lamp, E 14 base, 24 V: **1.90.020.053/0000**

Filament lamp, E 14 base, 220 - 260 V: **1.90.020.061/0000**

Single-wire screw terminal with clamp: 2 x 0.75 to 2.5 mm<sup>2</sup>, stranded core with wire end sleeve: 2 x 0.75 to 1.5 mm<sup>2</sup>, quick-connect terminal suitable for 2 x 2.8 x 0.8 tin-plated for soldering.

3

## Signal lamps with lamp socket E 14, IP40, 30.5 mm



Voltage limit max.	Power limit max.	Degree of protection from front side	Colour of lens	Order no. complete	Order no. single parts	
					Housing	Lens
250 V	5 W	IP40	transparent colourless	1.61.021.001/1002	<b>1.61.021.099/0000</b>	<b>5.49.233.005/1002</b>
250 V	5 W	IP40	transparent red	1.61.021.001/1301	<b>1.61.021.099/0000</b>	<b>5.49.233.005/1301</b>
250 V	5 W	IP40	transparent yellow	1.61.021.001/1402	<b>1.61.021.099/0000</b>	<b>5.49.233.005/1402</b>
250 V	5 W	IP40	transparent green	1.61.021.001/1502	<b>1.61.021.099/0000</b>	<b>5.49.233.005/1502</b>

Technical data see page 3 - 48

Technical data lamps see chapter 5

**Accessories:**

Filament lamp, E 14 base, 24 - 30 V: **1.90.020.033/0000**

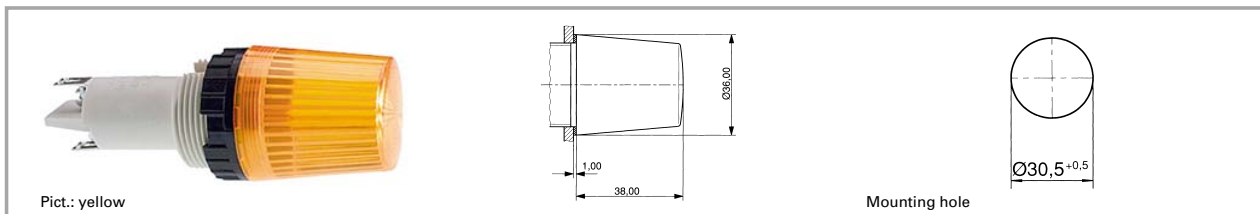
Filament lamp, E 14 base, 24 V: **1.90.020.053/0000**

Filament lamp, E 14 base, 220 - 260 V: **1.90.020.061/0000**

Single-wire screw terminal with clamp: 2 x 0.75 to 2.5 mm<sup>2</sup>, stranded core with wire end sleeve: 2 x 0.75 to 1.5 mm<sup>2</sup>, quick-connect terminal suitable for 2 x 2.8 x 0.8 tin-plated for soldering.

With Socket

## Signal lamps with lamp socket E 14, IP40, 30.5 mm



Voltage limit max.	Power limit max.	Degree of protection from front side	Colour of lens	Order no. complete	Order no. single parts	
					Housing	Lens
250 V	5 W	IP40	transparent colourless	1.61.021.011/1002	<b>1.61.021.099/0000</b>	<b>5.49.233.008/1002</b>
250 V	5 W	IP40	transparent red	1.61.021.011/1301	<b>1.61.021.099/0000</b>	<b>5.49.233.008/1301</b>
250 V	5 W	IP40	transparent yellow	1.61.021.011/1402	<b>1.61.021.099/0000</b>	<b>5.49.233.008/1402</b>
250 V	5 W	IP40	transparent green	1.61.021.011/1502	<b>1.61.021.099/0000</b>	<b>5.49.233.008/1502</b>

Technical data see page 3 - 48

Technical data lamps see chapter 5

**3**

### Accessories:

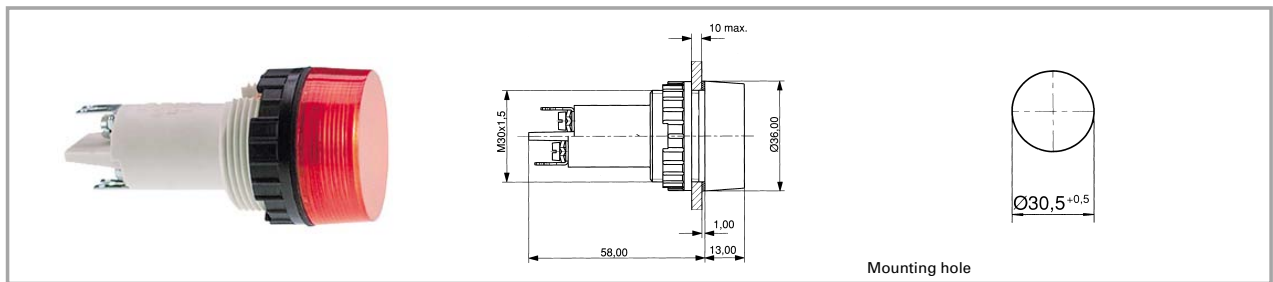
Filament lamp, E 14 base, 24 - 30 V: **1.90.020.105/0000**

Filament lamp, E 14 base, 220 - 260 V: **1.90.020.115/0000**

Single-wire screw terminal with clamp: 2 x 0.75 to 2.5 mm<sup>2</sup>, stranded core with wire end sleeve: 2 x 0.75 to 1.5 mm<sup>2</sup>, quick-connect terminal suitable for 2 x 2.8 x 0.8 tin-plated for soldering.

With  
Socket

## Signal lamps with lamp socket BA 15d, 30.5 mm



### Technical data

#### General information

Form of lens	round
Colour of lens	see order block
Diameter of collar	36 mm

#### Dimensions

Overall height	see order block
Mounting depth	58 mm
Mounting hole	30.5 mm

#### Mechanical design

Mounting	ring nut
Terminals	clamp + quick connector for 2 x 2.8 x 0.8 mm
Lamp socket	BA 15 d
Lamp	filament lamp

#### Electrical characteristics

Voltage limit max.	250 V
Power limit max.	5 W

#### Other specifications

Degree of protection from front side	see order block
Weight	40 g

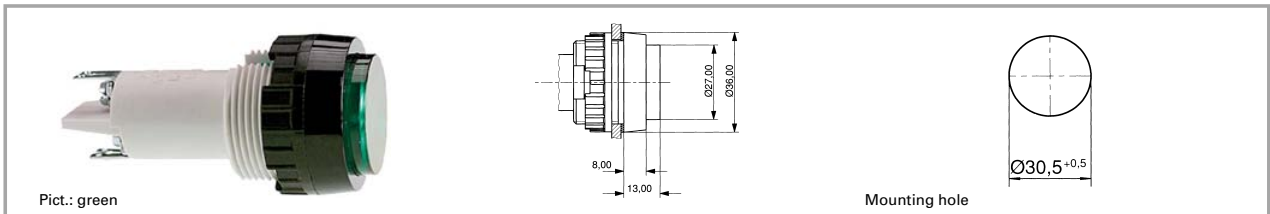
3

### Accessories Signal lamps with lamp socket BA 15d, 30.5 mm

With  
Socket

Description	Photo	Order no.	Page
Protection against contact to VBG 5		5.50.240.065/0200	5 - 28
Protective sleeve		5.52.011.031/0100	
Fixing spanner M 25, M 30		<b>5.58.002.020/0105</b>	5 - 23

## Signal lamps with lamp socket BA 15d, IP40, 30.5 mm



Voltage limit max.	Power limit max.	Degree of protection from front side	Colour of lens	Order no. complete	Order no. single parts	
					Housing	Lens
250 V	5 W	IP40	transparent colourless	1.63.521.004/1002	<b>1.63.521.099/0000</b>	<b>5.00.350.013/1002</b>
250 V	5 W	IP40	transparent red	1.63.521.004/1301	<b>1.63.521.099/0000</b>	<b>5.00.350.013/1301</b>
250 V	5 W	IP40	transparent yellow	1.63.521.004/1402	<b>1.63.521.099/0000</b>	<b>5.00.350.013/1402</b>
250 V	5 W	IP40	transparent green	1.63.521.004/1502	<b>1.63.521.099/0000</b>	<b>5.00.350.013/1502</b>

Technical data see page 3 - 52

Technical data lamps see chapter 5

### Accessories:

- Filament lamp, BA 15d base, 12 - 15 V: **1.90.070.003/0000**
- Filament lamp, BA 15d base, 24 - 30 V: **1.90.070.004/0000**
- Filament lamp, BA 15d base, 24 V: **1.90.070.053/0000**
- Filament lamp, BA 15d base, 220 - 260 V: **1.90.070.061/0000**

Single-wire screw terminal with clamp: 2 x 0.75 to 2.5 mm<sup>2</sup>, stranded core with wire end sleeve: 2 x 0.75 to 1.5 mm<sup>2</sup>, quick-connect terminal suitable for 6.8 x 0.8 mm / 2 x 2.8 x 0.8 mm, tin-plated for soldering.

3

With  
Socket

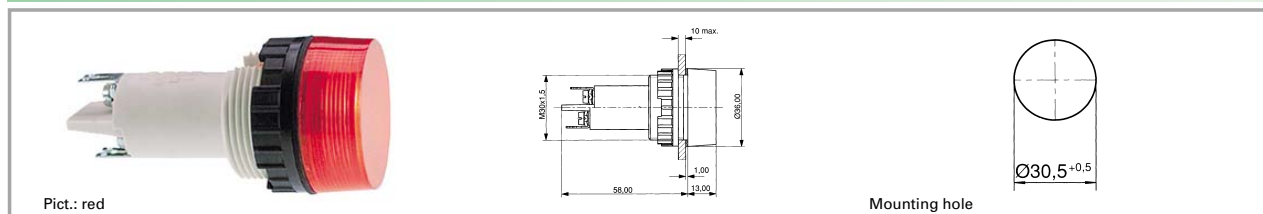
Technical data see page 3 - 52

Signal lamps

Stock items are marked  
by bold printed order numbers.

3 - 53

## Signal lamps with lamp socket BA 15d, IP40, 30.5 mm



Voltage limit max.	Power limit max.	Degree of protection from front side	Colour of lens	Order no. complete	Order no. single parts	
					Housing	Lens
250 V	5 W	IP40	transparent colourless	1.63.521.001/1002	<b>1.63.521.099/0000</b>	<b>5.49.233.005/1002</b>
250 V	5 W	IP40	transparent red	1.63.521.001/1301	<b>1.63.521.099/0000</b>	<b>5.49.233.005/1301</b>
250 V	5 W	IP40	transparent yellow	1.63.521.001/1402	<b>1.63.521.099/0000</b>	<b>5.49.233.005/1402</b>
250 V	5 W	IP40	transparent green	1.63.521.001/1502	<b>1.63.521.099/0000</b>	<b>5.49.233.005/1502</b>

Technical data see page 3 - 52

Technical data lamps see chapter 5

### Accessories:

Filament lamp, BA 15d base, 12 - 15 V: **1.90.070.003/0000**

Filament lamp, BA 15d base, 24 - 30 V: **1.90.070.004/0000**

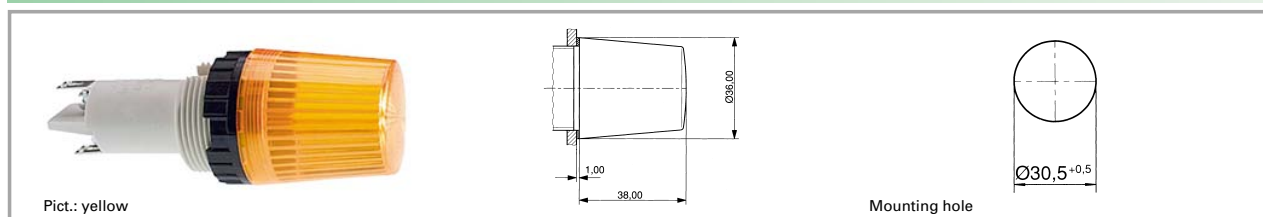
Filament lamp, BA 15d base, 24 V: **1.90.070.053/0000**

Filament lamp, BA 15d base, 220 - 260 V: **1.90.070.061/0000**

Single-wire screw terminal with clamp: 2 x 0.75 to 2.5 mm<sup>2</sup>, stranded core with wire end sleeve: 2 x 0.75 to 1.5 mm<sup>2</sup>, quick-connect terminal suitable for 6.8 x 0.8 mm / 2 x 2.8 x 0.8 mm, tin-plated for soldering.

3

## Signal lamps with lamp socket BA 15d, IP40, 30.5 mm



Voltage limit max.	Power limit max.	Degree of protection from front side	Colour of lens	Order no. complete	Order no. single parts	
					Housing	Lens
250 V	5 W	IP40	transparent colourless	1.63.521.011/1002	<b>1.63.521.099/0000</b>	<b>5.49.233.008/1002</b>
250 V	5 W	IP40	transparent red	1.63.521.011/1301	<b>1.63.521.099/0000</b>	<b>5.49.233.008/1301</b>
250 V	5 W	IP40	transparent yellow	1.63.521.011/1402	<b>1.63.521.099/0000</b>	<b>5.49.233.008/1402</b>
250 V	5 W	IP40	transparent green	1.63.521.011/1502	<b>1.63.521.099/0000</b>	<b>5.49.233.008/1502</b>

Technical data see page 3 - 52

Technical data lamps see chapter 5

### Accessories:

Filament lamp, BA 15d base, 24 - 30 V: **1.90.070.105/0000**

Filament lamp, BA 15d base, 220 - 260 V: **1.90.070.109/0000**

Single-wire screw terminal with clamp: 2 x 0.75 to 2.5 mm<sup>2</sup>, stranded core with wire end sleeve: 2 x 0.75 to 1.5 mm<sup>2</sup>, quick-connect terminal suitable for 6.8 x 0.8 mm / 2 x 2.8 x 0.8 mm, tin-plated for soldering.

With Socket