



## General data

Sockets to accommodate filament lamps and LEDs with bases.

## Content

<b>Panel mounting sockets W 2 x 4.6d</b>	<b>3 - 56</b>
Panel mounting sockets W 2 x 4.6d	3 - 57
<b>Panel mounting sockets, tubular lamp holders</b>	<b>3 - 58</b>
Panel mounting sockets, tubular lamp holders	3 - 58
<b>Panel mounting sockets BA 15d</b>	<b>3 - 60</b>
Panel mounting sockets BA 15d	3 - 60

## Panel mounting sockets W 2 x 4.6d



### Technical data

#### Mechanical design

Mounting see order block  
 Terminals see order block  
 Lamp socket W 2 x 4.6d

#### Electrical characteristics

Limit values 42 V/1.5 W

#### Other specifications

Weight 1 g

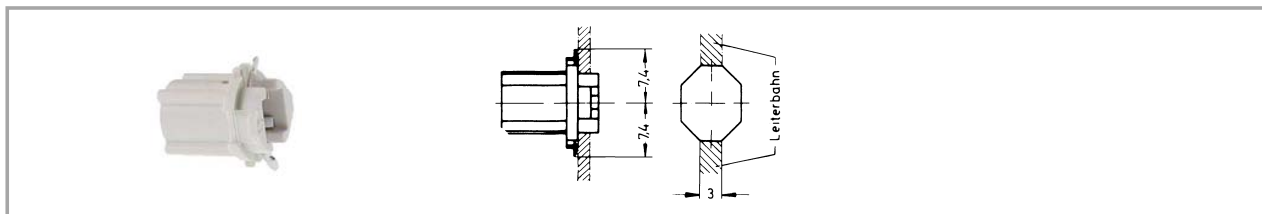
# 3

## Accessories Panel mounting sockets W 2 x 4.6d

Description	Photo	Order no.	Page
Filament lamp, W 2 x 4.6d base, 24 - 30 V		<b>1.90.120.005/0000</b>	5 - 4
Filament lamp, W 2 x 4.6d base, 60 V		<b>1.90.120.009/0000</b>	5 - 4
Filament lamp, W 2 x 4.6d base, 48 V		<b>1.90.120.010/0000</b>	5 - 4
Filament lamp, W 2 x 4.6d base, 24 V		<b>1.90.120.011/0000</b>	5 - 4
Filament lamp, W 2 x 4.6d base, 6 V		<b>1.90.120.013/0000</b>	5 - 4
LED W 2 x 4.6d superbright, red, 24 V		<b>1.90.690.361/0000</b>	5 - 16
LED W 2 x 4.6d superbright, green, 24 V		<b>1.90.690.362/0000</b>	5 - 16
LED W 2 x 4.6d superbright, yellow, 24 V		<b>1.90.690.363/0000</b>	5 - 16
LED W 2 x 4.6d superbright, blue, 24 V		<b>1.90.690.364/0000</b>	5 - 16
LED W 2 x 4.6d superbright, white, 24 V		<b>1.90.690.365/0000</b>	5 - 16

Sockets

## Panel mounting sockets W 2 x 4.6d



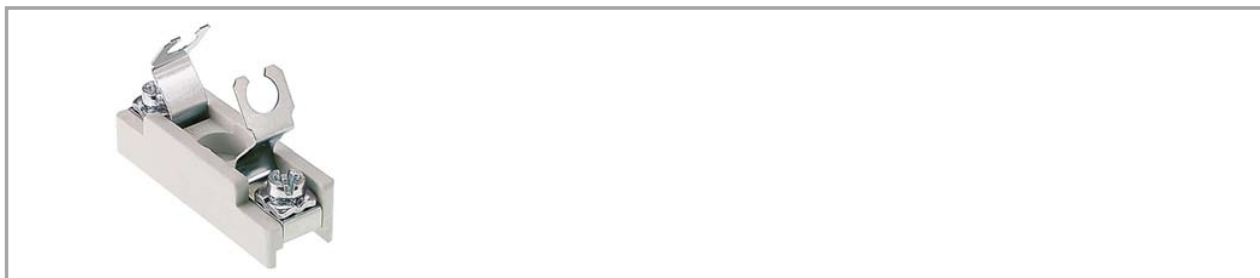
Lamp socket	Limit values	Terminals	Mounting	Order no.
W 2 x 4.6d	42 V/1.5 W	2 spring contacts	90° turn	<b>1.72.401.021/0000</b>

Technical data see page 3 - 56

**3**

Sockets

## Panel mounting sockets, tubular lamp holders



### Technical data

#### Mechanical design

Mounting cut-out in housing  
 Terminals screw terminals  
 Lamp socket S 8.5  
 Insulation group according to VDE 0110 b/DIN 57110 b

#### Electrical characteristics

Limit values 2 A/42 V

#### Other specifications

Weight 11 g

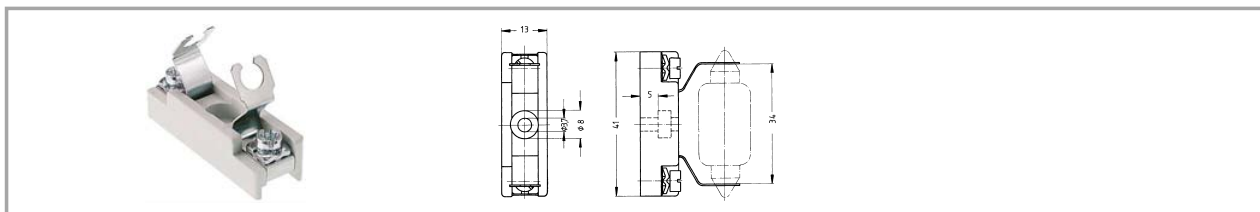
3

### Accessories Panel mounting sockets, tubular lamp holders

Description	Photo	Order no.	Page
Filament lamp, S 8.5 base, 24 V, shape L		<b>1.90.111.003/0000</b>	5 - 14
Filament lamp, S 8.5 base, 24 V, shape K		<b>1.90.111.103/0000</b>	5 - 14

## Panel mounting sockets, tubular lamp holders

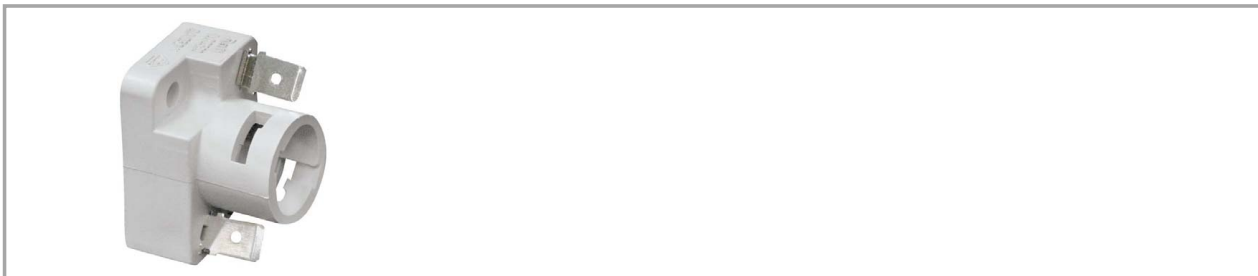
Sockets



Lamp socket	Limit values	Terminals	Mounting	Order no.
S 8.5	2 A/42 V	screw terminals	cut-out in housing	<b>1.02.570.021/0000</b>

Technical data see page 3 - 58

**Panel mounting sockets BA 15d**



**Technical data**

**Mechanical design**

Mounting see order block  
 Terminals see order block  
 Lamp socket BA 15 d

**Electrical characteristics**

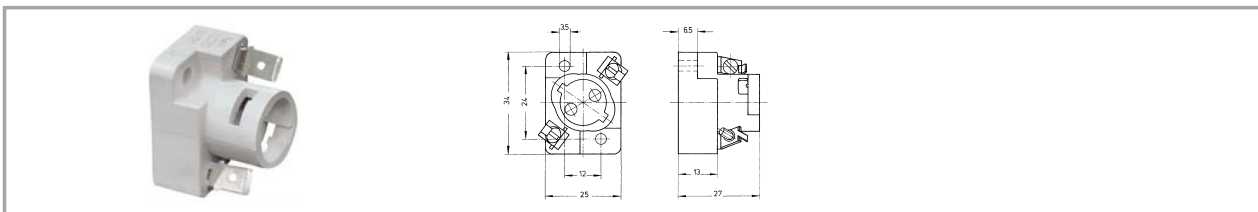
Limit values see order block

**Other specifications**

Weight see order block

3

**Panel mounting sockets BA 15d**



Lamp socket	Limit values	Terminals	Mounting	Order no.
BA 15 d	250 V/4 W	quick connector	cut-out in housing	1.02.582.002/0000

Sockets

Technical data see page 3 - 60

Approvals: VDE 2 A, T135°C.