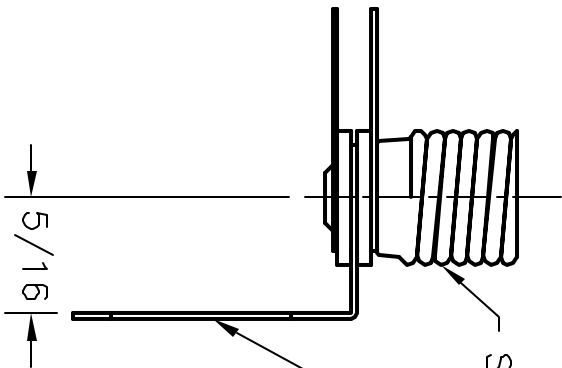
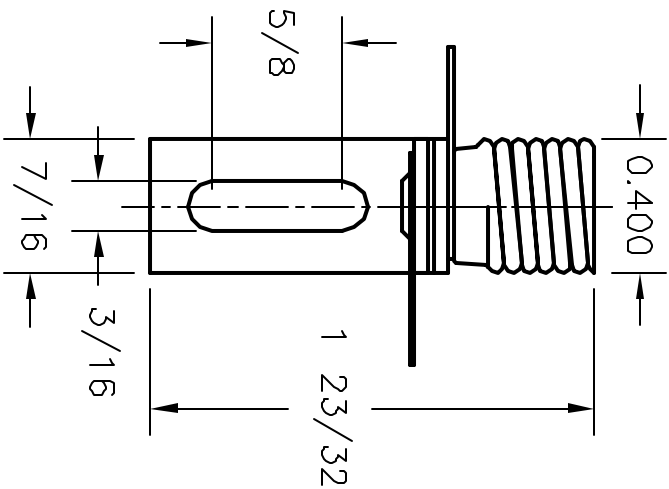
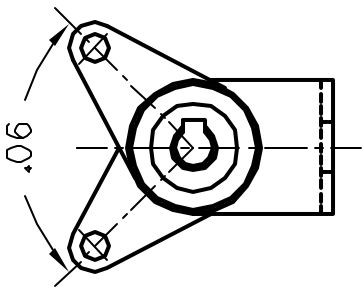


ALL RIGHTS RESERVED. NO PORTION OF THIS PUBLICATION, WHETHER IN WHOLE OR IN PART CAN BE REPRODUCED WITHOUT THE EXPRESS WRITTEN CONSENT OF SPC TECHNOLOGY.

REVISONS		DOC. NO. SPC-F005	Effective 12/21/08	DCP No 890				
DCP #	REV	DESCRIPTION	DRAWN	DATE	CHECKD	DATE	APPRVD	DATE
1948	A	RELEASED	JIN	09/29/08	JWM	09/29/08	JWM	09/29/08



SHELL: BRASS

BRACKET: STEEL,  
ZINC & CLEAR PLATED

**DISCLAIMER:**  
ALL STATEMENTS AND TECHNICAL INFORMATION CONTAINED HEREIN ARE BASED UPON INFORMATION AND/OR TESTS WE BELIEVE TO BE ACCURATE AND RELIABLE. SINCE CONDITIONS OF USE ARE BEYOND OUR CONTROL, THE USER SHALL DETERMINE THE SUITABILITY OF THE PRODUCT FOR THE INTENDED USE AND ASSUME ALL RISK AND LIABILITY WHATSOEVER IN CONNECTION THEREWITH.



DRAWN BY:		DATE:
Jason Nash		09/29/08
CHECKED BY:		DATE:
JWM		09/29/08
APPROVED BY:		DATE:
JWM		09/29/08

DRAWING TITLE:			
MINIATURE SCREW BASE LAMPHOLDER W/2 SOLDER LUGS			
SIZE	DWG. NO.	ELECTRONIC FILE	
A	SPC21715	16M1206.DWG	
SCALE:	NTS	U.O.M.: INCHES	SHEET: 1 OF 1
TOLERANCES UNLESS OTHERWISE SPECIFIED		REV	
FRACTIONAL ± 1/64		A	
DECIMAL .XXX ± 0.05			
ANGULAR ± 1°			