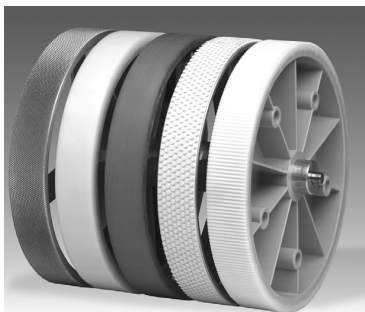


Measuring wheels



- Measuring wheels are utilized in combination with encoders to measure material in the wood, paper, metal, textile and plastic industry.
- Various diameters, designed for use with Kübler encoders, available for metric and imperial systems.
- When selecting a measuring wheel, the first consideration is the type of material to be measured as this serves as the basis for determining the surface finish or coating of the measuring wheel.

Surface of the measured material:

| Surface of the measured material: | Recommended profile no. |
|-----------------------------------|-------------------------|
| Plastic e.g. PVC, PE, ...) | 4, 5 |
| Paper | 4, 5 |
| Cardboard | 1, 4, 5 |
| Wood | 1, 4, 5 |
| Textile | 6, 9, 1 |
| Bare metals | 6 |
| Varnished surfaces | 6 |
| Wire | 5 |

Measuring wheels on stock:

| | |
|------------------|------------------|
| 8.0000.3211.0004 | 8.0000.3542.0010 |
| 8.0000.3211.0006 | 8.0000.3542.0012 |
| 8.0000.3211.0010 | 8.0000.3552.0010 |
| 8.0000.3241.0006 | 8.0000.3552.0012 |
| 8.0000.3211.0010 | 8.0000.3562.0007 |
| 8.0000.3291.0004 | 8.0000.3562.0010 |
| 8.0000.3291.0006 | 8.0000.3592.0006 |
| 8.0000.3291.0010 | 8.0000.3592.0010 |
| 8.0000.3512.0010 | 8.0000.3592.0012 |
| 8.0000.3542.0007 | 8.0000.3751.0010 |

Measuring wheels for metric system:

| Measuring wheel | Profile | Coating | Coating hardness | Standard bore [mm] ¹⁾ | Measuring width [mm] | Material of wheel body | Weight (approx.) [g] | Wheel No. |
|---------------------|---------|------------------------------|------------------|----------------------------------|----------------------|------------------------|----------------------|-----------|
| 0.2 m ø 6,37 cm | 1 | diamond knurl | | 6 | 12 | aluminum | 40 | 211 |
| | 4 | plastic (Hytrel), smooth | 85 ... 90 | 4/6/10 | 12 | plastic | 35 | 241 |
| | 9 | plastic (Hytrel), corrugated | 85 ... 90 | 4/6/10 | 12 | plastic | 35 | 291 |
| 0.5 m ø 15,92 cm | 1 | diamond knurl | | 10 | 25 | aluminum | 350 | 512 |
| | 4 | plastic (Hytrel), smooth | 85 ... 90 | 7/10 | 25 | plastic | 260 | 542 |
| | 5 | plastic (Vulkollan), smooth | 85 ... 90 | 10 | 25 | aluminum | 320 | 552 |
| | 6 | tufted rubber | | 10 | 25 | aluminum | 320 | 562 |
| | 9 | plastic (Hytrel), corrugated | 85 ... 90 | 7/10 | 25 | plastic | 260 | 592 |

Measuring wheels for imperial system:

| Measuring wheel | Profile | Coating | Coating hardness | Standard bore [mm] ¹⁾ | Measuring width [mm] | Material of wheel body | Weight (approx.) [g] | Wheel No. |
|-----------------|---------|---------------|------------------|----------------------------------|----------------------|------------------------|----------------------|-----------|
| 1 foot | 1 | diamond knurl | 70 .. 75 | 6 | 9,7 | aluminum | 110 | 751 |

¹⁾ other bore diameters on request

Please note:

If a measuring wheel is mounted directly on the shaft of a rotary encoder, the pressure force between the measuring wheel and

measured material should not exceed the radial shaft load listed in the data sheet of the encoder. In addition, the measuring wheels can only be used for in-house pur-

poses which are not subject to the stipulations of the German calibration code.

Order code:

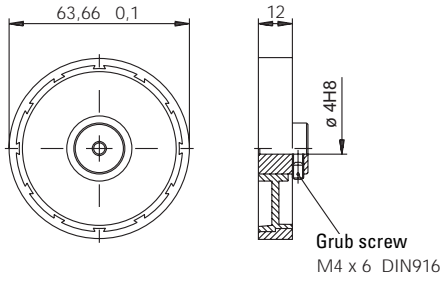
8.0000.3XXX.00XX

Measuring wheel no.

bore diameter

Measuring wheels

Dimensions:
Type 3241 and 3291



Dimensions:
Type 3542 and 3592

