



IdentiLab™ Label Software



IMAGINE Legible, Professional Labels for Your Lab Samples in Just Minutes!

Create files, templates and more with the easy-to-use wizards in Brady's IdentiLab Laboratory Labeling Software.

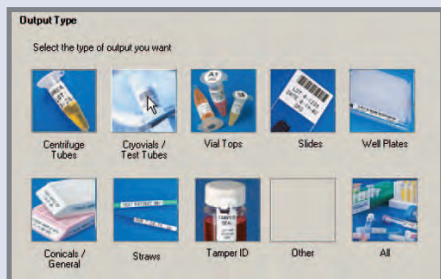
The streamlined interface and hundreds of parts and graphics categorized by common lab applications makes creating legible, durable and accurate labels quick and easy.

- Easy-to-use wizards to create new files and templates
- Superscript and subscript characters
- Database import capabilities with refresh feature to ensure data integrity
- Automatic text formatting
- 2-D bar code support
- Multi-label data entry view
- Die cut and continuous label supplies
- Compatibility with a variety of Brady printers including LabXpert™ Laboratory Labeling System, TLS 2200® Thermal Labeling System, TLS PC Link™ Thermal Labeling System, Brady IP™ Printer Series, the majority of Brady's thermal transfer printers, and all Windows-based printers.

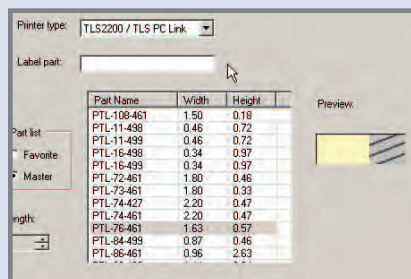


For complete software features, system requirements and printer compatibility, visit: www.bradyid.com/identilab

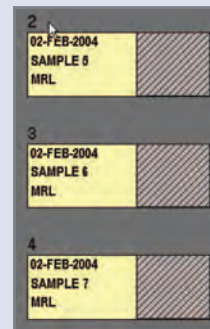
Print Your Labels In Three Simple Steps



Step One:
Choose a category of label type to fit your lab application.



Step Two:
Select your printer and the label part you have installed.



Step Three:
Type your label text onto label preview to see your whole print job on screen! Just click print!