

P-touch QL-500



Choose the right label for the job
The P-touch QL-500 offers a wide range of labels and tapes to suit almost any usage.



DK LABEL DK Die-Cut Labels (Thermal Paper)

SENDER
John O'Brien
8 The Grange, Slabstocke
Milton, Manchester, M03 1RW

Marie Hague
281 Black St
Bourthorpe
Lancashire
SK8 8EA

Dominic Rash
27 Fairtree Rd
Petstoun
Lancashire
SK8 1EW



Standard address labels
DK-11204 | 400 labels/roll 28mm x 90mm

Small address labels
DK-1209 | 800 labels/roll 28mm x 60mm

Large address labels
DK-1206 | 400 labels/roll 38mm x 90mm



CLIENT DATA 2005 A-M



Mr. M Briggs
14 Woodland Road
Wokingham

101-66193-498

Mini Business Card
DK-11204 | 400 labels/roll 17mm x 54mm

File folder labels
DK-11203 | 300 labels/roll 17mm x 87mm

CD/DVD labels
DK-1207 | 100 labels/roll 58mm

Shipping labels
DK-11202 | 300 labels/roll 62mm x 100mm

DK TAPE DK Continuous Length Tapes (Thermal Paper/Durable Film)

89/PHG

CONFERENCE ROOM "AZURE"

NO SMOKING

Narrow width tape
White tape DK-22214 12mm x 30.48m (Thermal Paper)

Medium width tape
White tape DK-22212 25mm x 30.48m (Thermal Paper)

Wide tape
White tape DK-22204 62mm x 30.48m (Thermal Paper)



Continuous tape is ideal for creating signage and banners. With continuous tape you can print labels 62mm wide and up to 1 metre long.

Contents

- 2 Starter Rolls
- 1 x DK Die-Cut Standard Address Roll (100 labels, 28mm x 90mm)
- 1 x DK Continuous Paper Tape Roll (62mm x 30m)
- Quick Start Guide
- Label Catch Tray
- Cleaning Sheet (for print roller)
- CD Rom (Software/Driver/User Guide)
- AC Power Cord
- USB Cable

System Requirements	
Computer	PC compatible
Operating System	Windows 98SE/NT/2000/XP/Server
CPU	Intel Pentium® 386 or higher (100MHz or higher recommended)
Memory (RAM)	16MB (32MB or higher recommended)
Hard Disk Free Space	10MB (20MB or more required)
Printer	12-pin dot matrix printer
Interface	USB 1.1 or later specification
Power	12V AC power for operation
Printer	200mA high voltage or higher graphics card

Contact:



Brother International Europe Ltd
Brother House, 1 Tame Street, Audenshaw, Manchester M34 5JE
Tel: +44 (0) 161-330 6531 Fax: +44 (0) 161-330 5520
Web-site: www.brother.com

All specifications correct at time of printing. Brother is a registered trademark of Brother Industries Ltd.
Several product names are registered trademarks or trademarks of their respective companies.



Professional Labelling Solution



Brother P-touch QL-500

UP TO **50**
LABELS PER MINUTE*

300 DPI
SHARP PRINTING

NEW
EASY PEEL
LABELS

MAKE LABELS UP TO
62mm
WIDE

NO PAPER JAMS
NO INK OR TONER NEEDED
NO LABEL WASTAGE



Always at your side

*A4000000

At your side[™]
brother

No paper jams, no ink or toner needed, no label wastage



- The P-touch QL-500 includes:**
- ▶ 2 starter rolls
 - 1 x Die-cut standard address roll (100 labels, 29mm x 90mm)
 - 1 x DK Continuous Paper Tape roll (62mm x 3m)
 - ▶ Quick Start Guide
 - ▶ Label Catch Tray
 - ▶ Cleaning Sheet (for print roller)
 - ▶ CD Rom (Software/Driver/User Guide)
 - ▶ AC Power Cord
 - ▶ USB Cable

A totally versatile labelling solution

The Brother QL-500 makes it so easy to create customised labels for a wide variety of applications, including: files & folders, signage, envelopes & packages, badges, shelves, storage, retail, barcodes, CDs and videos.



The Brother QL-500 Label Printer. Faster, more versatile and easy to use – a new level of label printing performance.

The Brother QL-500 Label Printer has taken label printing to new levels. Whether you need one label or many labels, it's the fastest, easiest and most versatile way to print labels directly from your PC. Perfect for printing address & shipping labels, banners & signage, this machine has **unique label flexibility** and can print on both **die-cut peel-off labels** or **continuous length tape**.

Fast printing of high quality labels

- Prints at speeds of up to 50 labels per minute*
- Includes P-touch Editor software which allows you to create custom layouts with barcodes, graphics, true type fonts and special formatting (including frames and tables)
- Highlight, click and print option for quickly printing labels from popular Microsoft Office applications including Outlook[®], Word[®] and Excel[®]
- Direct Thermal print technology eliminates toner, ink and ribbon costs
- Label Templates - for quick label creation
- Full network connectivity allows multi-user printing with optional PS-9000 print server.



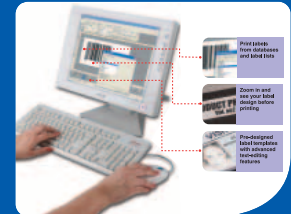
*Standard address labels

Two Easy Ways to Make Labels



① Highlight, Click and Print
(Print directly from Microsoft[®], Excel[®] and Outlook[®])

OR



② Get creative and design your own labels with our label design software

P-touch QL-500



www.P-touch.com