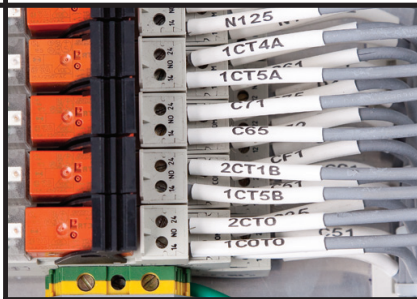


**PALLET TRUCK
PLEASE RETURN**

WALL PIV TO ROOF
DO NOT REMOVE LABEL

⚠ DANGER
SURFACE MAY
REACH 90°C



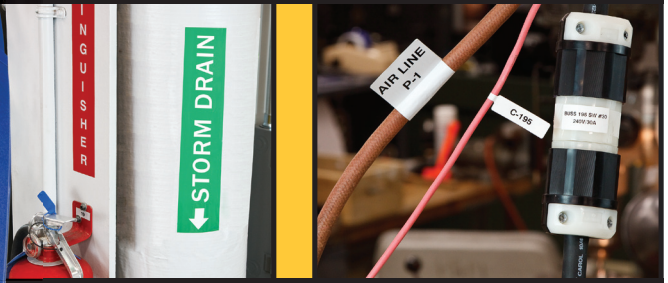
THOUSANDS OF APPLICATIONS.
HUNDREDS OF LABELS.
ONE LABEL PRINTER.



BMP™ 71 LABEL PRINTER

THE ONE WAY TO FASTER, EASIER LABEL PRINTING

The best features and functionalities of Brady's portable label printers are now combined into one easy-to-use, top-of-the-line portable thermal transfer printer – Brady's NEW BMP™71 printer. Whether you need ¼" self-laminating wire marker labels or 2" wide vinyl pipe marker labels, you only need **ONE** label maker - **the BMP™71 printer can do it all!**



SAVE TIME WITH FOOLPROOF LABEL DESIGN AND HIGH SPEED PRINT

The BMP71 printer is designed to help you get your job done quickly and efficiently – and that means making labels fast. At 1.5" per second, the BMP71 printer has the fastest print speed on the portable printer market.

But that's not all. With built-in design wizards, material-recognition technology and storage space for over 100,000 label files, this printer can cut your label design time in half.

BMP™71 LABEL PRINTER

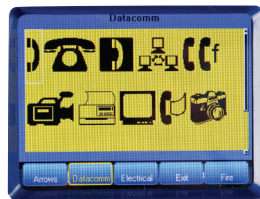
Label Design Wizards Available For:
Electrical • Voice/Data Comm • Safety/General ID

CUT MATERIAL WASTE - PREVIEW LABELS BEFORE YOU PRINT!

With a large, full color graphical screen, the BMP71 printer shows you exactly what your label will look like as you're creating it – so there's no guesswork. You can stop wasting label material on "test labels" and start saving time and money by creating a label once – knowing it's correct before you even hit "Print."

The display includes:

- Label material and ribbon part number
- Label color and size (including the amount of remaining material)
- Font size, bold and other type functions
- Application templates
- Multi-area print areas
- Remaining battery charge



Other Features Include:

- | | | | |
|----------------------|------------------|-------------------------------|----------------|
| • 100's Of Symbols | • Frame | • Expand/Condense | • Barcodes |
| • Reverse Print | • Mirror Print | • Time/Date Stamps | • Sequences |
| • Multiple Font Size | • Auto Font Size | • Underline | • Italics/Bold |
| • Subscripts | • Vertical | • Multiple Areas On One Label | |



ONE SOURCE FOR LABEL MATERIALS



The BMP™71 label maker can print on more than 30 different types of label materials – all designed with Brady’s industrial-strength durability.

- PermaSleeve™, Self-Laminating, & Flag Labels to identify wires & cables.
- Indoor/Outdoor Vinyl for electrical panels, pipes, racks, & more.
- Polyester die-cut labels to identify components, equipment & more.
- Raised Panel Labels as an economical alternative to engraving.

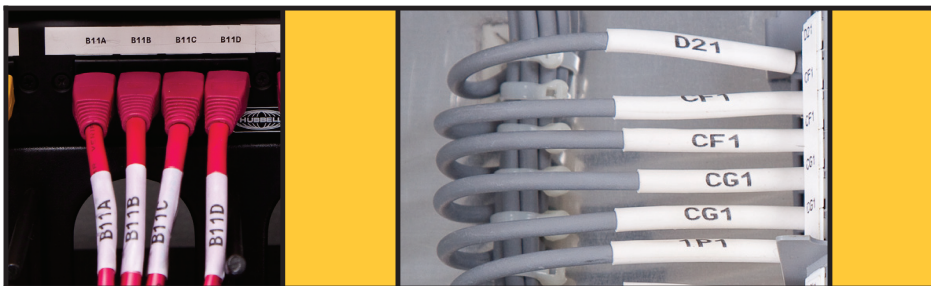
The BMP71 printer can print on over 400 label parts - so whatever label size or color you need, we’ve got you covered. Add all of the materials from the TLS 2200® Thermal Transfer Printer and the HandiMark® Portable Label Maker, and your label options are endless!

www.Bradyid.Com/Bmp71 · www.Bradycanada.Ca/Bmp71
To shop materials

ENHANCE YOUR LABELS WITH ADVANCED GRAPHICS AND SYMBOLS

With hundreds of symbols and graphics, the BMP71 printer can transform your labels from basic text messages to highly effective communication vehicles.

For lean enterprises, Brady’s MarkWare™ software provides additional graphics and templates for signs, labels, pipe markers and tags - perfect for 5S, TPM and lean visuals.



EASY WAY TO CREATE LABELS ON YOUR PC

Brady’s LabelMark™ software lets you easily create labels for asset id, component marking, voice / data comm labeling, wire markers and more. LabelMark software is completely integrated with Microsoft Office, AutoCAD applications and more.

Coming soon ---- Create labels on your PC, download them to the BMP71 printer and print with the new LabelMark v.5.1 software. Edit your files on the BMP71 label printer and transfer them back into LabelMark software.



WATCH A DEMO VIDEO

Bradyid.com/bmp71 · BradyCanada.ca/bmp71

 **BRADY**
WHEN PERFORMANCE MATTERS MOST™

FOR ALL YOUR APPLICATIONS

Floor Labeling Solutions



**PALLET TRUCK
PLEASE RETURN**

Glow-In-The-Dark



B593 Raised Panel Labels



134A

20 Colors of Vinyl Available



Vinyl Pipe Markers Up To 2" Wide



Visual Workplace



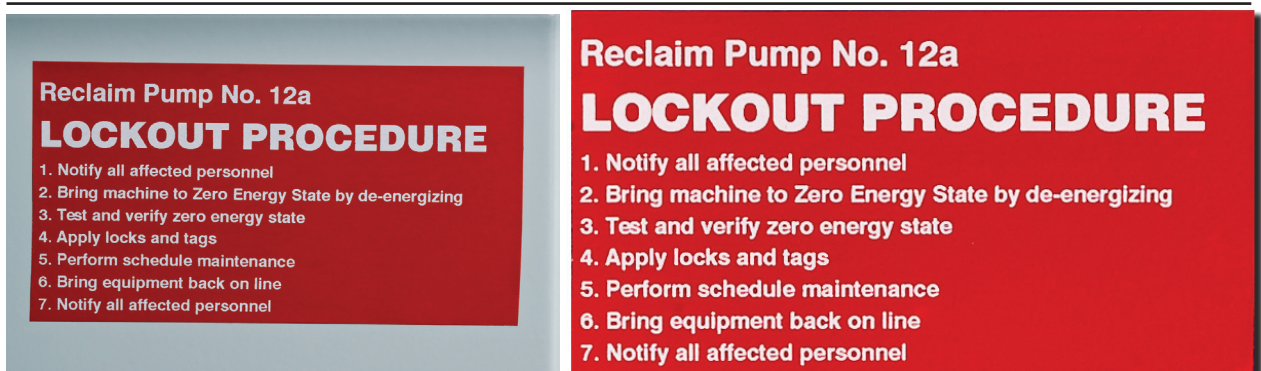
Outdoor Durable Reflective Tape



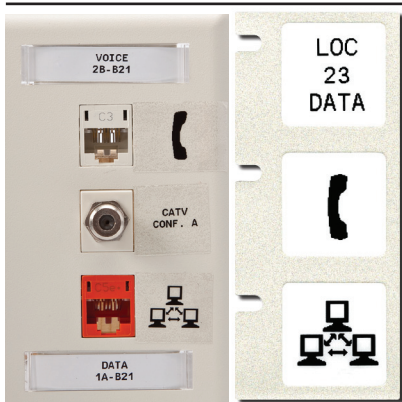
100's of Symbols



Multi-Line Labels



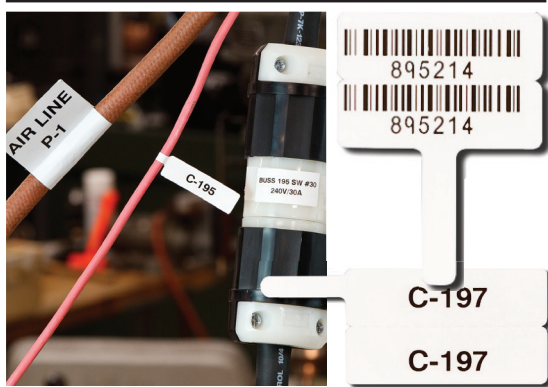
Die Cut Labels



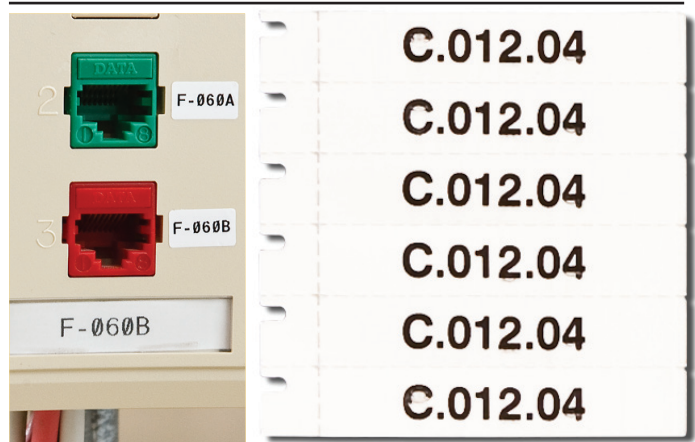
Patch Panel Labels



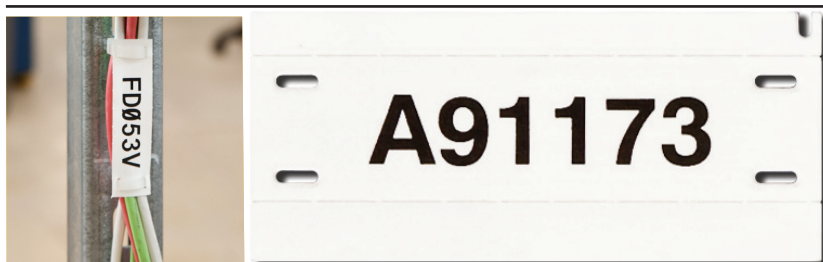
Flags/Fiber Optic Labels



Work Station Labels



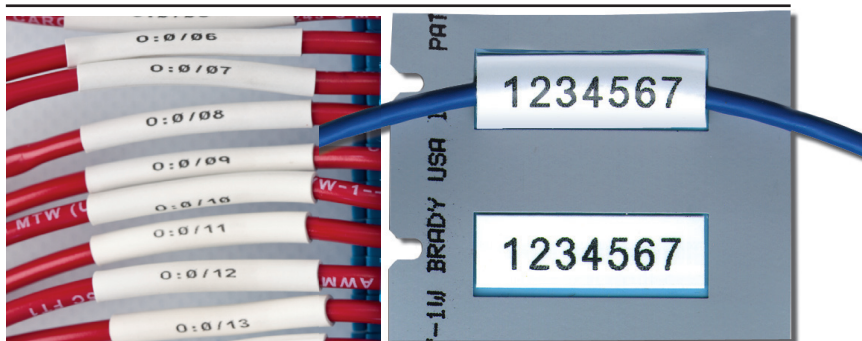
Wire Bundle Labels



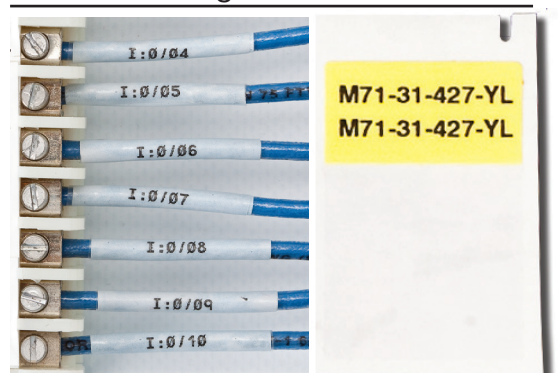
Power and Ground Cable Labels



PermaSleeve™ Labels



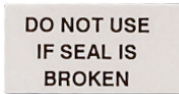
Self-Laminating Labels



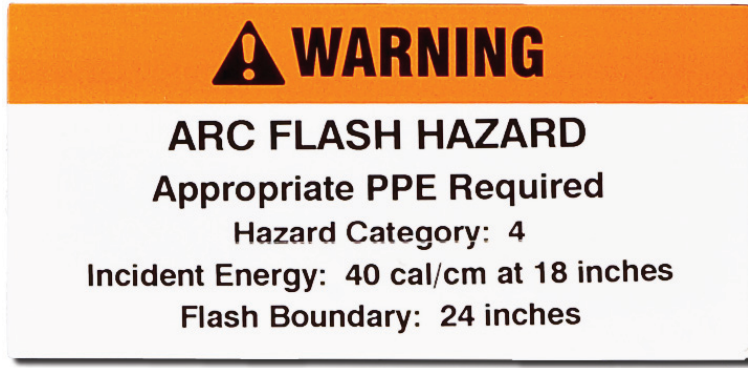
Equipment Labels



Tamper Indicating Tape



Arc Flash Labels



Labels Withstand High Temperatures



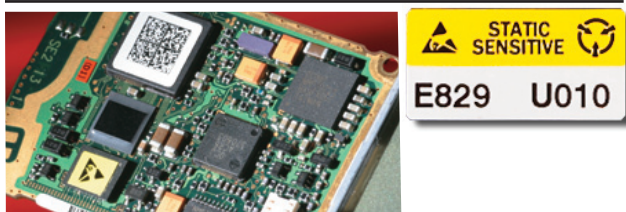
Framed Labels



Control Panel Labels



Pre-Printed Labels



Create Tags With Bar Codes



THE ALL-IN-ONE LABELER FOR YOUR WHOLE CREW

Catalog Number	Description
BMP71*	BMP™71 Label Printer
BMP71-LM	BMP™71 Label Printer with LabelMark Software
BMP71-MW	BMP™71 Label Printer with Markware Lean Software
BMP71-QC	BMP™71 Label Printer with Quick Charger
BMP71-SC	BMP™71 Label Printer with Soft Case
BMP71-SC-QC	BMP™71 Label Printer with Soft Case and Quick Charger
M71-AC-BC	BMP™71 AC/Battery Adaptor
M71-ADAPT	TLS/Handimark Media Adaptor
M71-BATT	BMP™71 Battery Pack
M71-CABLE	BMP™71 USB Cable
M71-CLEAN	BMP™71 Cleaning Kit
M71-HC	BMP™71 Hardcase
M71-QC	BMP™71 Quick Charger
M71-SC	BMP™71 Softcase
BMP71-360	Brady 360 Replacement Printer Program



*Label printer ships with Hardcase, Charger/AC Adapter, 1 Roll of M71-31-423 White Die Cut Labels, 1 R6000 Black Ribbon Cartridge, Roll Adapter, USB Cable, Quickstart Guide, a CD including the Printer Driver, Users Guide and Tutorial.

For a complete listing of label & ribbon materials, to watch a demo video, and to order a free sample pack.

Bradyid.com/bmp71 · BradyCanada.ca/bmp71



Brady 360™ Replacement Printer Program

The Brady 360™ Printer Replacement Plan supplements the Limited Warranty already provided to you with the purchase of your Brady printer. With this plan, Brady Corporation, in its reasonable discretion, will send a replacement printer in the event that your covered printer requires service during the term of its Limited Warranty. Brady will replace your defective printer with a new printer that has the same or similar functionality and is of the same or greater value.

Limit two new replacement printers per covered printer in each warranty period. The plan must be purchased at the time of printer purchase to be valid.

** Printheads are covered.

** Limit of two printers in the first 12 months of initial purchase.

Terms of Brady Corporation's BMP™71 warranty can be found at www.bradyid.com/bmp71
www.bradycanada.ca/bmp71

Brady Worldwide, Inc.
6555 W. Good Hope Road
Milwaukee, WI 53223
1-888-272-3946
www.bradyid.com

Brady Canada
355 Apple Creek Blvd.
Markham, ON L3R 9X7
1-800-263-6179
www.bradycanada.ca

