



Microsoft Windows Embedded CE 6.0 R3 Board Support Package (BSP) for the Texas Instruments OMAP 3530 Beagleboard

Binary image now available for free evaluation.

- Provides pre-configured binary images for SD/MMC Card and NAND boot configurations and demonstrates decoding of video sources using video codec acceleration with Microsoft's Media Player
- The binary evaluation image includes an [SDK](#). This can be installed to allow application development against the target platform using Visual Studio.
- Visit the [MPC Data Support Portal](#) and register for free download.

Full source code available for custom designs

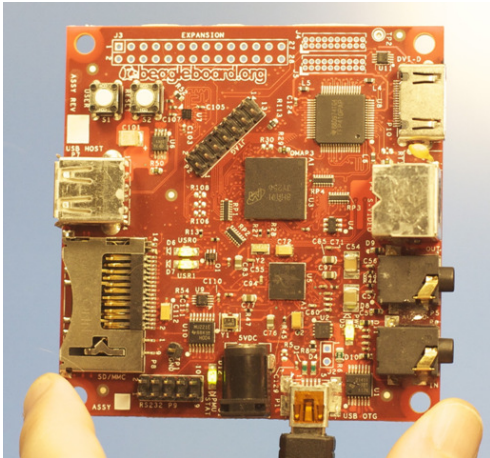
- Subject to source license agreement and fee (one license per design, royalty free)
- A low-cost (\$500) commercial licence including 5 incidents / 30 calendar days technical support
- **Free BSP updates are available for existing customers**
- Visit the [MPC Data Support Portal](#) and register to make your purchase.

For further details contact windows@mpcdata.com



Board Support Package

MPC Data is pleased to offer a complete Windows Embedded CE 6.0 R3 Board Support Package (BSP) for the low cost OMAP3530 based Beagleboard, including a full range of quality drivers to enable a rapid start-up for your Beagleboard based product.



Hardware Accelerated Video Support Using Codec Engine Framework

To complement the leading-edge ARM Cortex A8 processor core, the TI Codec Engine framework within the BSP utilises the additional C64x+ DSP core and TI's binary codec algorithms to accelerate video media encode and decode. The Codec Engine framework provides the standard VISA (Video Imaging Speech Audio) API for user applications. The BSP includes H.264, MPEG4 and MPEG2 codecs in binary form*.

*A production codec licence agreement must be sought from Texas Instruments for commercial use.

Customisations

MPC Data are specialist system integrators and experts in software development for Windows Embedded CE powered products. Our team can give expert advice from embedded application development through to hardware design and product realisation.



The BSP now supports easy integration with the [Reliance](#) high reliability filesystem and [FlashFX](#) flash management products from [Datalight](#) Inc.

MPC Data Windows CE 6.0 R3 Board support package features out of the box:

Drivers	Supported	Kernel Features	Supported
Audio In	No	USB KITL	Yes
Audio Out	Yes	Debug UART	Yes
LCD HDMI	Yes	Watchdog	No
LCD S-Video	No		
USB EHCI	Yes		
USB OTG Function	Yes		
USB OTG Host	Yes		
Micron NAND	Yes		
Power Management	No		
LED	No		
SDIO	Yes		
GPIO	Yes		
DMA	Yes		
McBSP	Yes		
McSPI	No		

Bootloader Features	Supported
MLO for SD Memory	Yes
MLO for NAND Memory	Yes
EBOOT for SD Memory	Yes
EBOOT for NAND Memory	Yes
USB RNDIS	Yes
Splash Screen	Yes
Debug UART	Yes

