



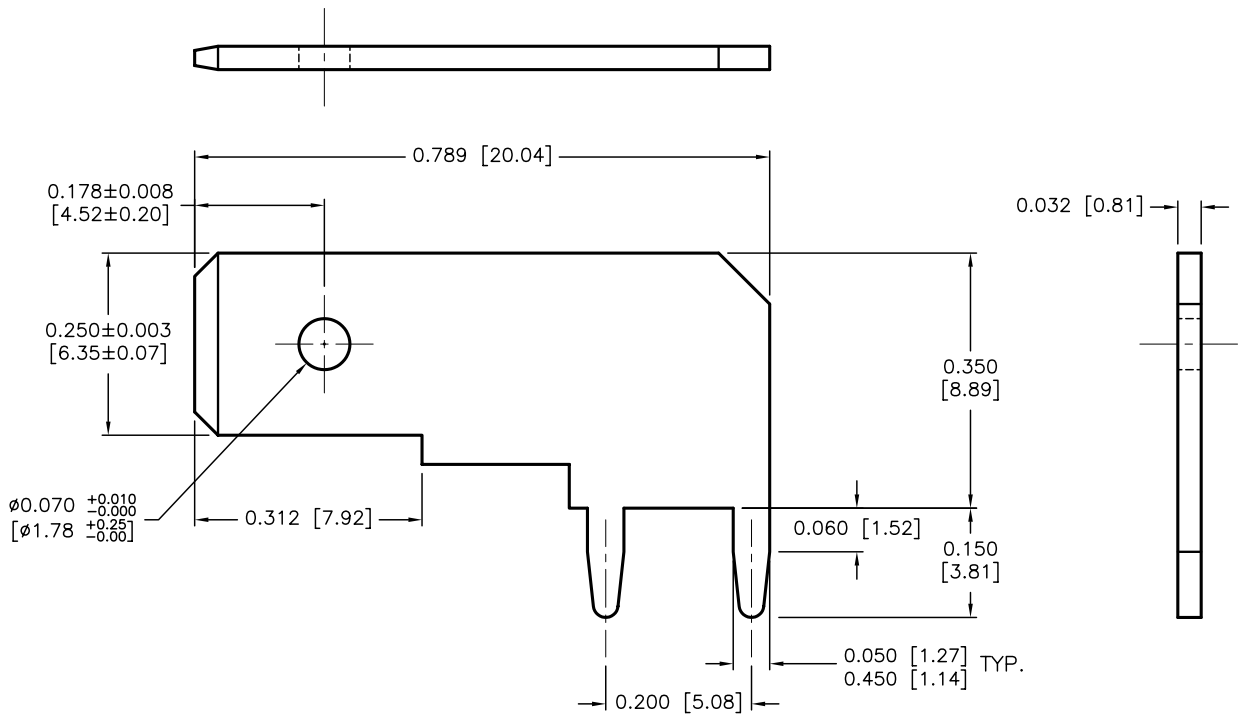
ALL RIGHTS RESERVED. NO PORTION OF THIS PUBLICATION, WHETHER IN WHOLE OR IN PART CAN BE REPRODUCED WITHOUT THE EXPRESS WRITTEN CONSENT OF SPC TECHNOLOGY.

SPC-F005.DWG

REVISIONS

DOC. NO. SPC-F005 \* Effective: 7/8/02 \* DCP No: 1398

DCP #	REV	DESCRIPTION	DRAWN	DATE	CHECKD	DATE	APPRVD	DATE
1052	A	RELEASED	HO	10/1/02	JWM	10/2/02	DJC	10/2/02
1892	B	Update To RoHS Compliant	EO	3/14/06	HO	3/15/06	HO	3/15/06



NOTES:

- MATERIAL: BRASS, TIN PLATED
- MOUNTING HOLE SIZE:  $\phi 0.052$  [ $\phi 1.32$ ]

DISCLAIMER:  
ALL STATEMENTS AND TECHNICAL INFORMATION CONTAINED HEREIN ARE BASED UPON INFORMATION AND/OR TESTS WE BELIEVE TO BE ACCURATE AND RELIABLE. SINCE CONDITIONS OF USE ARE BEYOND OUR CONTROL, THE USER SHALL DETERMINE THE SUITABILITY OF THE PRODUCT FOR THE INTENDED USE AND ASSUME ALL RISK AND LIABILITY WHATSOEVER IN CONNECTION THEREWITH.

TOLERANCES:

Tolerances Unless  
Otherwise Specified  
Decimal  
 $\pm 0.005$  [ $\pm 0.15$ ]  
Angular  $\pm \frac{1}{2}^\circ$

DRAWN BY:	DATE:
HISHAM ODISH	10/1/02
CHECKED BY:	DATE:
JEFF MCVICKER	10/2/02
APPROVED BY:	DATE:
DANIEL CAREY	10/2/02

DRAWING TITLE:

QUICK FIT TERMINAL, PC BOARD, MALE

SIZE	DWG. NO.	ELECTRONIC FILE	REV
A	SPC11122	32C2099.DWG	B
SCALE: NTS	U.O.M.: INCHES [mm]	SHEET: 1 OF 1	