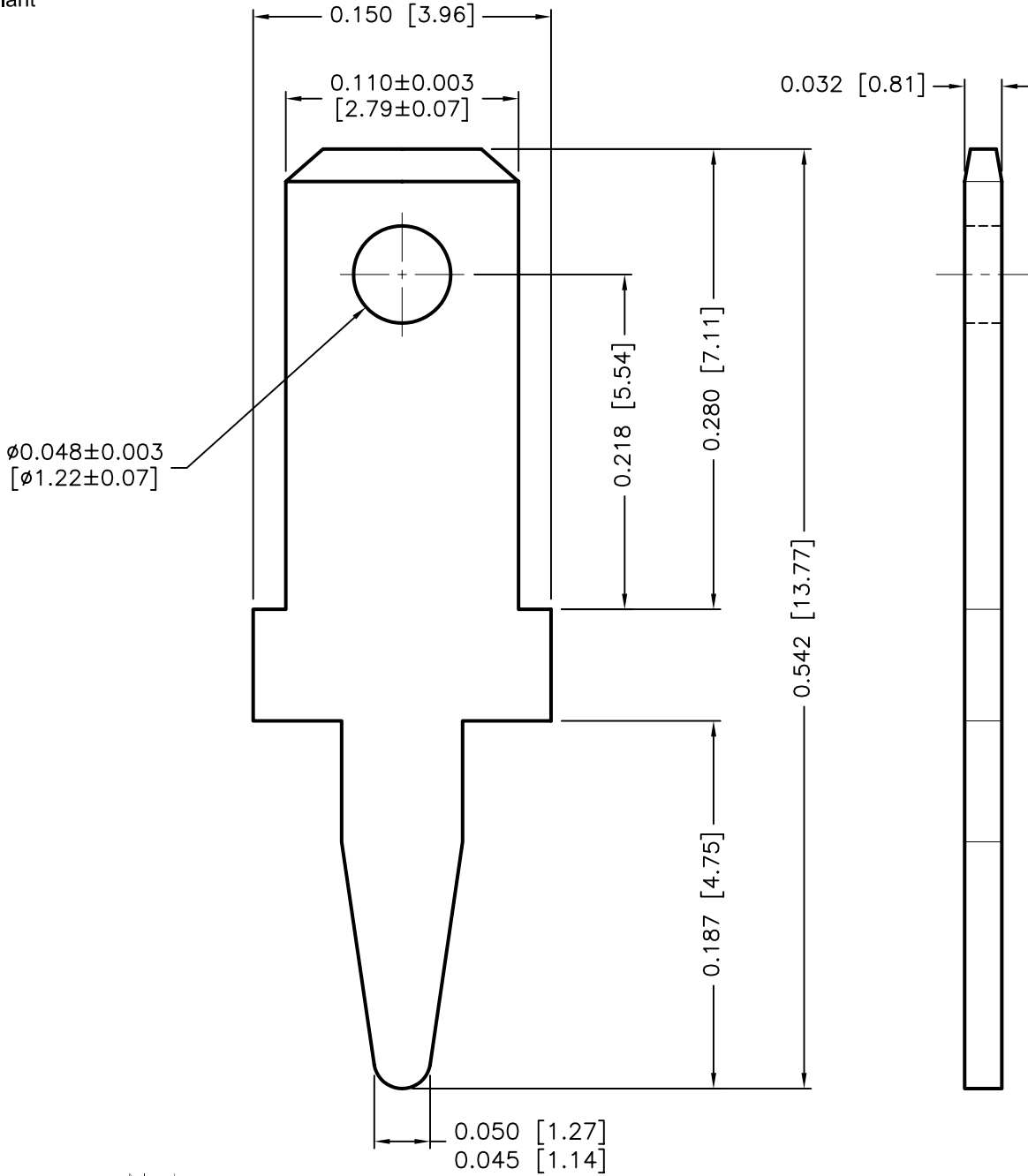


REVISIONS			DOC. NO. SPC-F004 * Effective: 7/8/02 * DCP No: 1398						
DCP #	REV	DESCRIPTION	DRAWN	DATE	CHECKD	DATE	APPRVD	DATE	
1052	A	RELEASED	HYO	2/4/02	JWM	2/4/02	DJC	2/4/02	
1892	B	Update To RoHS Compliant	EO	3/14/06	HO	3/15/06	HO	3/15/06	



Notes:

1. Material: Brass, Tin Plated
2. Mounting Hole:  $\phi 0.052$  [ $\phi 1.32$ ]

SPC-F004.DWG

TOLERANCES:  UNLESS OTHERWISE SPECIFIED, DECIMAL $\pm 0.005$ [ $\pm 0.15$ ]	DRAWN BY:	DATE:	DRAWING TITLE:			
	HISHAM ODISH	2/4/02	PC BOARD QUICK-FIT MALE, VERTICAL TERMINAL			
	CHECKED BY:	DATE:	SIZE	DWG. NO.	ELECTRONIC FILE	REV
	JEFF MCVICKER	2/4/02	A	SPC11121	32C2098.DWG	B
APPROVED BY:	DATE:	SCALE: NTS		U.O.M.: INCHES [mm]		SHEET: 1 OF 1
DANIEL CAREY	2/4/02					

ALL RIGHTS RESERVED. NO PORTION OF THIS PUBLICATION, WHETHER IN WHOLE OR IN PART CAN BE REPRODUCED WITHOUT THE EXPRESS WRITTEN CONSENT OF SPC TECHNOLOGY. DISCLAIMER: ALL STATEMENTS AND TECHNICAL INFORMATION CONTAINED HEREIN ARE BASED UPON INFORMATION AND/OR TESTS WE BELIEVE TO BE ACCURATE AND RELIABLE. SINCE CONDITIONS OF USE ARE BEYOND OUR CONTROL, THE USER SHALL DETERMINE THE SUITABILITY OF THE PRODUCT FOR THE INTENDED USE AND ASSUME ALL RISK AND LIABILITY WHATSOEVER IN CONNECTION THEREWITH.