

## Modular Fiber Switches

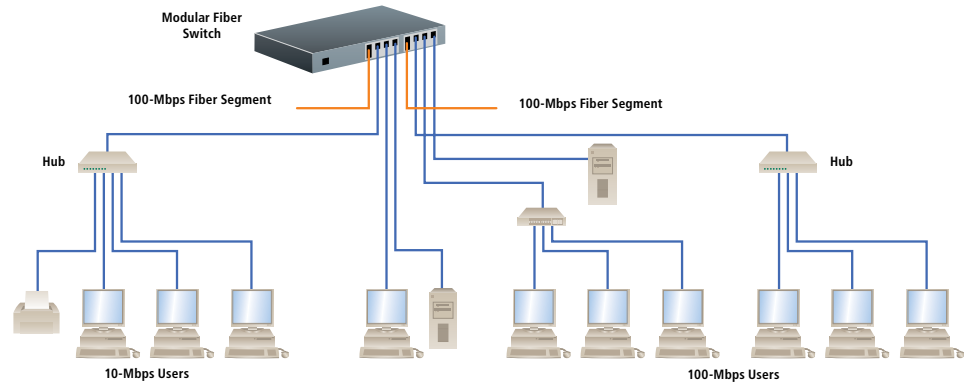
# Mix and match fiber and twisted-pair ports on your Ethernet LAN.



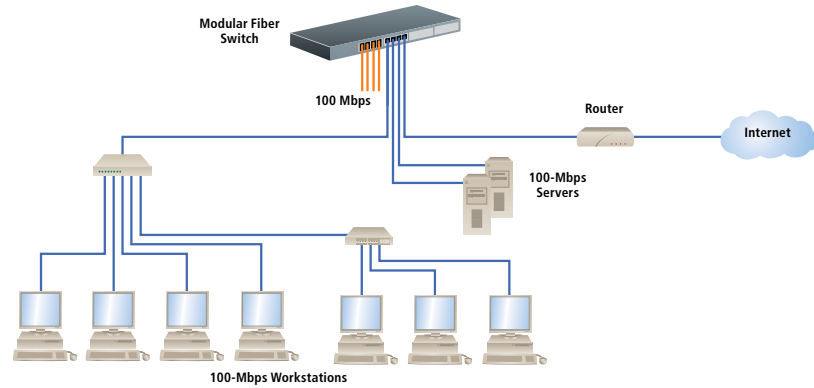
**FEATURES**

- » 100-Mbps switching services for large, high-performance LANs.
- » Mixed-media configurations for maximum flexibility.
- » Configurable with fiber ports, all connector types and speeds.
- » Configurable with RJ-45 (copper) ports, 10/100 auto-negotiation.
- » Full or half-duplex operation, autosensing.

The switch provides central connectivity while maintaining full 10-Mbps and 100-Mbps bandwidth on each segment.



The switch provides a 100-Mbps fiber backbone facility.



Top: LE1401A with modules (left to right)  
LE1425C and LE1426C;  
Middle: LE1416A with modules (left to right)  
LE1428C, LE1425C, LE1419C, and LE1422C  
Bottom: LE1408A with modules (left to right)  
LE1427C and LE1419C



## OVERVIEW

With the **Modular Fiber Switch**, you can configure any mix of fiber or RJ-45, 100-Mbps or 10-Mbps switched ports and connector types. The switch provides the switching speed and the reliability to smoothly support multiple workgroups, each with its own switched 100 Mbps or 10 Mbps domain, for increased performance using any available fiber media type or twisted-pair cabling.

Choose from a variety of connectors. The twisted-pair ports are 10/100 autonegotiating. Mixed-media combination modules are also supported by the switch.

In a typical application, groups of standard dual-speed 10-/100-Mbps hubs, or 100-Mbps hubs and switches, will form a series of subnets for workgroups or multi-system power users. Each subnet is served by a separate switched port on the Modular Fiber Switch, and each of these subnets has full 100-Mbps or 10-Mbps bandwidth. Local traffic on one subnet, either 100 Mbps or 10 Mbps, is switch-isolated from the other subnets for high overall network performance.

For remote offices, campus environments, ISPs, or telecommunications facilities, select the 100-Mbps multimode SC fiber module (LE1421C-40K). It supports full duplex transmissions up to 40 kilometers (24.8 miles). That's twice the distance of the other 100-Mbps fiber modules.

Easy to install and use, the **Modular Fiber Switch** is designed for organizations with multiple workgroups, remote offices, and network traffic centers. The switch automatically learns and maintains addresses of attached nodes, so it adapts to network changes and expansions for plug-and-play operation. Front-mounted LEDs provide status information on each port.

## TECH SPECS

**Address Table** — 24K nodes with address aging  
**Cooling Method** — Fan cooled, internal @ 9 cfm  
**Filtering and Forwarding Rate** — 16-port aggregate; 2380K packets per second  
**Latency** — 100 Mbps: 5  $\mu$ s + packet time; 10 Mbps: 15  $\mu$ s + packet time  
**Packet Buffers** — 8 MB dynamic  
**Processing Type** — Store and forward with IEEE 802.3x full-duplex flow control  
**Standards** — IEEE 802.3: 10BASE-T, 10BASE-FL; IEEE 802.3u: 100BASE-TX, 100BASE-FX  
**Connectors** —  
 LE1401A, LE1408A: (1) power, (2) slots for modules;  
 LE1416A: (1) power, (4) slots for modules;  
 LE1424C, LE1428C: (4) pairs of ST®;  
 LE1419C, LE1421C, LE1421C-40K: (4) pairs of SC;  
 LE1422C: (4) MT-RJ;  
 LE1425C: (4) RJ-45;  
 LE1427C: (3) RJ-45, (1) pair of ST; LE1426C, LE1426C-SM: (3) RJ-45, (1) pair of SC  
**Indicators** — Chassis: Power, Per port: LK: ON when link is operational; ACT: ON with port activity; FDX/HDX: ON for full duplex mode, OFF for half-duplex mode; 10/100: ON for 100 Mbps, OFF for 10 Mbps  
**Power** — Input: 110 to 240 VAC, 47 to 63 Hz, autosensing, internal; Consumption: LE1401A, LE1408A: 20 W, typical; LE1416A: 35 W, typical  
**Size** — LE1401A: 1.75"H (1U) x 9"W x 9"D (4.4 x 22.9 x 22.9 cm); LE1408A, LE1416A: 1.75"H (1U) x 17"W x 9"D (4.4 x 43.2 x 22.9 cm)  
**Weight** — LE1401A: 2.5 lb. (1.1 kg); LE1408A, LE1416A: 4 lb. (1.8 kg)

Item	Code
Modular Fiber Switch Chassis	
8-Port	LE1401A
8-Port Rackmount	LE1408A
16-Port Rackmount	LE1416A
<i>(The LE1408A and LE1416A include a 19" rackmount kit.)</i>	
Fiber Modules, 4-Port	
10-Mbps	
Multimode-ST	LE1424C
100-Mbps	
Multimode-ST	LE1428C
Multimode-SC	LE1419C
Multimode-MT-RJ	LE1422C
Single-Mode-SC	LE1421C
100-Mbps for Transmissions up to 40 km	
Single-Mode-SC	LE1421C-40K
Twisted-Pair Module, 4-Port (One with Uplink)	
10-/100-Mbps RJ-45	LE1425C
Mixed-Media Modules, 4-Port	
(3) 10-/100-Mbps RJ-45, (1) 100-Mbps Fiber	
Multimode-ST	LE1427C
Multimode-SC	LE1426C
Single-Mode-SC	LE1426C-SM
Blank Panel	LE1416A-BLANK
<b>Remember to order cables...</b>	
Duplex Fiber Optic Cable, PVC, ST-ST, Custom Lengths	EFN062-CC