

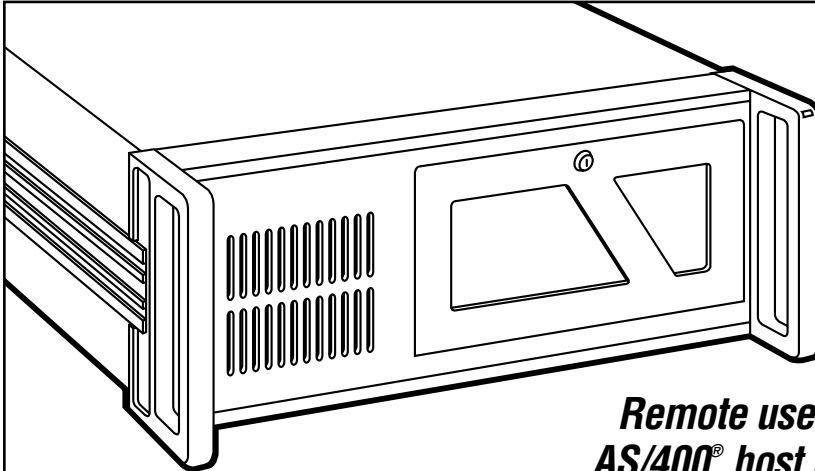
© 2005. All rights reserved.  
Black Box Corporation.

# BLACK BOX<sup>®</sup>

## NETWORK SERVICES

Black Box Corporation • 1000 Park Drive • Lawrence, PA 15055-1018 • Tech Support: 724-746-5500 • [www.blackbox.com](http://www.blackbox.com) • e-mail: [info@blackbox.com](mailto:info@blackbox.com)

## REMOTE ACCESS GATEWAY



***Remote users can securely connect to an AS/400<sup>®</sup> host from anywhere in the world for the price of a local phone call.***

### Key Features

- ▶ ***Eliminates the cost of additional phone lines, long-distance charges, and specialized equipment.***
- ▶ ***You get superior network security with 128-bit key technology.***
- ▶ ***All the hardware and software you need for secure remote access.***

Use the power of the Internet to connect remote users to your AS/400. A single Internet connection at the home office can serve virtually any number of users. No matter how far away users are from the AS/400, they can connect via a local telephone call.

The Remote Access Gateway, along with ES/TCP terminal emulation software, provides all the hardware and software you need for secure remote access. Setup and management are easy, too. Simply follow the screen prompts in any SSL-enabled Web browser.

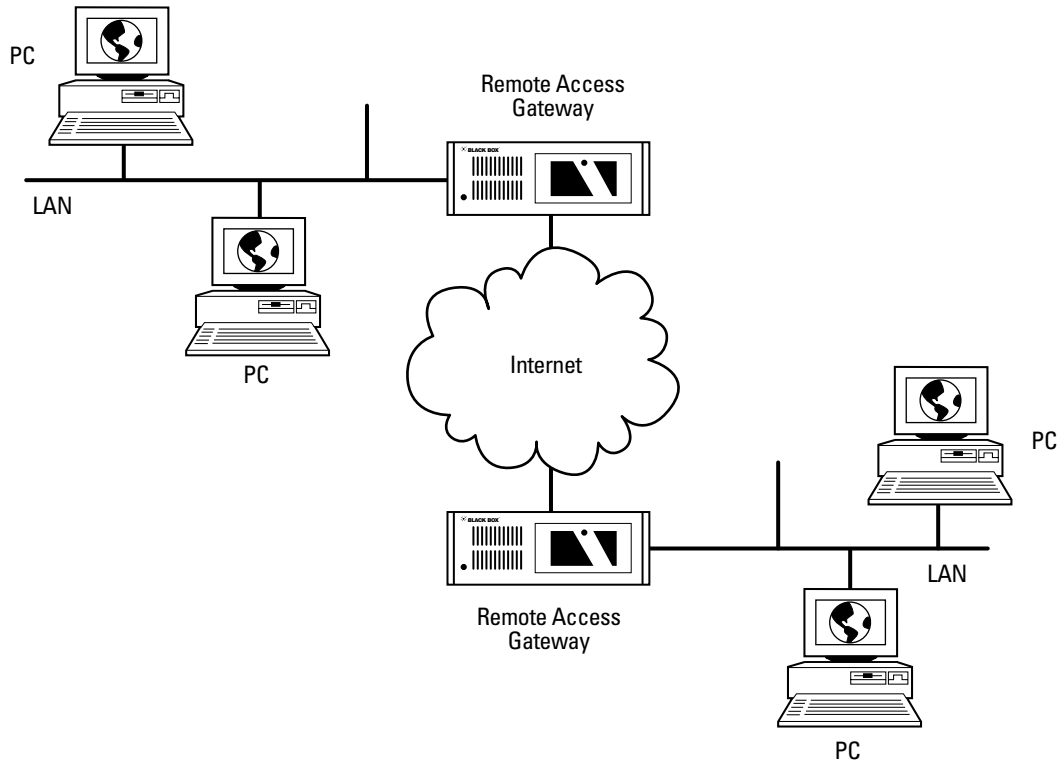
Unlike solutions based on 40-bit keys, the Remote Access Gateway encrypts all traffic using 128-bit key technology that virtually eliminates the possibility of snooping. ES/TCP also provides an additional layer of security, since no other application can gain access to your private network. And the AS/400 itself is used to authenticate users, which centralizes access control and eliminates additional sign-on screens.

The terminal emulation software features hotspots, keystroke macros, keyboard mapping, screen customization, customizable tool bar, and host printing.

Other features of the Remote Access Gateway include:

- Provides a complete solution to IP networking security risks.
- Managed by an easy-to-use, Web-based interface that you can access via Netscape Navigator<sup>™</sup> or Microsoft Internet Explorer<sup>™</sup>.

## ***Establish a secure connection between two Remote Access Gateways to achieve safe communication between two LANs over the Internet.***



## Specifications

### PC415A:

#### PC System Requirements —

**Host Site:** AS/400 with Ethernet and AS/400 V3R2 or higher, full-time Internet connection (AS/400 does not need to be connected to the Internet), PC with Ethernet IP and Web browser (Internet Explorer 4.0 or Netscape 4.0);

**Client PCs:** PC running Windows 95, 98, or NT 3.51/4.0; 3.5" floppy disk drive; hard drive with 5 MB of space available; 4 MB of DRAM minimum

**Power** — 115/230 VAC (switch-selectable), 50/60 Hz

**Connectors** — (1) DB9 male, (2) RJ-45 female

**Size** — 6.8"H x 19"W x 21.8"D (17.3 x 48.3 x 55.4 cm)

**Weight** — 31.5 lb. (14.3 kg); Shipping: 42 lb. (19.1 kg)

#### PC416 and PC417:

**PC System Requirements** — IBM® PC or compatible with 386 processor or higher; 3.5" floppy disk drive; hard drive with 5 MB of space available; 4 MB of memory minimum; Windows 3.x/95 or Windows NT 3.51 or higher; TCP/IP installed

## Ordering Information

ITEM	CODE
Remote Access Gateway.....	PC415A
<i>To add more users, order...</i>	
IBM 5250 Over TCP/IP Emulation Software	
Single-User .....	PC416
10-User.....	PC417
<i>Remember to order cable...</i>	
Category 5 Solid-Conductor Cable, 4-Pair, Straight-Pinned, PVC, Custom Lengths.....	EYN737MS
V.35 Interface Cable, 6.5-ft. (2-m).....	EHN078-002M