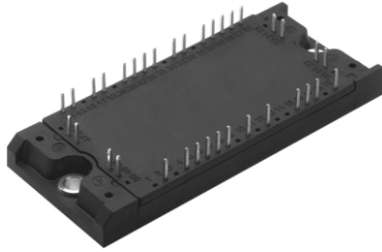


IGBT Fourpack Module, 75 A


ECONO2 4PACK

FEATURES

- Square RBSOA
- HEXFRED® low Q_{rr} , low switching energy
- Positive $V_{CE(on)}$ temperature coefficient
- Copper baseplate
- Low stray inductance design
- Speed 8 kHz to 60 kHz
- Compliant to RoHS directive 2002/95/EC


RoHS
COMPLIANT

PRODUCT SUMMARY

V_{CES}	1200 V
I_C at $T_C = 67\text{ °C}$	75 A
$V_{CE(on)}$ (typical)	3.4 V

BENEFITS

- Benchmark efficiency for SMPS application in particular HF welding
- Rugged transient performance
- Low EMI, requires less snubbing
- Direct mounting to heatsink space saving
- PCB solderable terminals
- Low junction to case thermal resistance

ABSOLUTE MAXIMUM RATINGS

PARAMETER	SYMBOL	TEST CONDITIONS	MAX.	UNITS
Collector to emitter voltage	V_{CES}		1200	V
Continuous collector current	I_C	$T_C = 25\text{ °C}$	100	A
		$T_C = 80\text{ °C}$	67	
Pulsed collector current See fig. C.T.5	I_{CM}		200	
Clamped inductive load current	I_{LM}		200	
Diode continuous forward current	I_F	$T_C = 25\text{ °C}$	60	
		$T_C = 80\text{ °C}$	40	
Diode maximum forward current	I_{FM}		150	
Gate to emitter voltage	V_{GE}		± 20	V
Maximum power dissipation (IGBT)	P_D	$T_C = 25\text{ °C}$	480	W
		$T_C = 80\text{ °C}$	270	
Maximum operating junction temperature	T_J		150	°C
Storage temperature range	T_{Stg}		- 40 to + 125	
Isolation voltage	V_{ISOL}		AC 2500 (MIN)	V

ELECTRICAL SPECIFICATIONS ($T_J = 25\text{ }^\circ\text{C}$ unless otherwise specified)						
PARAMETER	SYMBOL	TEST CONDITIONS	MIN.	TYP.	MAX.	UNITS
Collector to emitter breakdown voltage	$V_{BR(CE)}$	$V_{GE} = 0\text{ V}, I_C = 500\text{ }\mu\text{A}$	1200	-	-	V
Collector to emitter voltage	$V_{CE(ON)}$	$I_C = 75\text{ A}, V_{GE} = 15\text{ V}$	-	3.4	4.0	
		$I_C = 100\text{ A}, V_{GE} = 15\text{ V}$	-	3.8	4.5	
		$I_C = 75\text{ A}, V_{GE} = 15\text{ V}, T_J = 125\text{ }^\circ\text{C}$	-	4.0	4.5	
		$I_C = 100\text{ A}, V_{GE} = 15\text{ V}, T_J = 125\text{ }^\circ\text{C}$	-	4.53	5.1	
Gate threshold voltage	$V_{GE(th)}$	$V_{CE} = V_{GE}, I_C = 250\text{ }\mu\text{A}$	4.0	5.0	6.0	
Threshold voltage temperature coefficient	$\Delta V_{GE(th)}/\Delta T_J$	$V_{CE} = V_{GE}, I_C = 1\text{ mA}$ (25 °C to 125 °C)	-	- 11	-	mV/°C
Zero gate voltage collector current	I_{CES}	$V_{GE} = 0\text{ V}, V_{CE} = 1200\text{ V}$	-	7	250	μA
		$V_{GE} = 0\text{ V}, V_{CE} = 1200\text{ V}, T_J = 125\text{ }^\circ\text{C}$	-	580	2000	
Diode forward voltage drop	V_{FM}	$I_F = 75\text{ A}$	-	3.7	4.9	V
		$I_F = 100\text{ A}$	-	4.1	5.5	
		$I_F = 75\text{ A}, T_J = 125\text{ }^\circ\text{C}$	-	3.7	5.1	
		$I_F = 100\text{ A}, T_J = 125\text{ }^\circ\text{C}$	-	4.2	5.7	
Gate to emitter leakage current	I_{GES}	$V_{GE} = \pm 20\text{ V}$	-	-	± 200	nA

SWITCHING CHARACTERISTICS ($T = 25\text{ }^\circ\text{C}$ unless otherwise noted)						
PARAMETER	SYMBOL	TEST CONDITIONS	MIN.	TYP.	MAX.	UNITS
Total gate charge (turn-on)	Q_G	$I_C = 75\text{ A}$ $V_{CC} = 600\text{ V}$ $V_{GE} = 15\text{ V}$	-	630	-	nC
Gate to emitter charge (turn-on)	Q_{GE}		-	65	-	
Gate to collector charge (turn-on)	Q_{GC}		-	250	-	
Turn-on switching loss	E_{on}	$I_C = 75\text{ A}, V_{CC} = 600\text{ V}$ $V_{GE} = 15\text{ V}, R_g = 5\text{ }\Omega, L = 500\text{ }\mu\text{H}$ $T_J = 25\text{ }^\circ\text{C}$ (1)	-	1.74	-	mJ
Turn-off switching loss	E_{off}		-	1.46	-	
Total switching loss	E_{tot}		-	3.20	-	
Turn-on switching loss	E_{on}		-	2.44	-	
Turn-off switching loss	E_{off}	$I_C = 75\text{ A}, V_{CC} = 600\text{ V}$ $V_{GE} = 15\text{ V}, R_g = 5\text{ }\Omega, L = 500\text{ }\mu\text{H}$ $T_J = 125\text{ }^\circ\text{C}$ (1)	-	2.35	-	mJ
Turn-off switching loss	E_{off}		-	2.35	-	
Total switching loss	E_{tot}		-	4.79	-	
Turn-on delay time	$t_{d(on)}$		-	268	-	
Rise time	t_r	$I_C = 75\text{ A}, V_{CC} = 600\text{ V}$ $V_{GE} = 15\text{ V}, R_g = 5\text{ }\Omega, L = 500\text{ }\mu\text{H}$ $T_J = 125\text{ }^\circ\text{C}$	-	43	-	ns
Turn-off delay time	$t_{d(off)}$		-	308	-	
Fall time	t_f		-	127	-	
Reverse bias safe operating area	RBSOA		$T_J = 150\text{ }^\circ\text{C}, I_C = 200\text{ A}$ $R_g = 10\text{ }\Omega, V_{GE} = 15\text{ V to } 0\text{ V}$	Fullsquare		
Short circuit safe operating area	SCSOA	$T_J = 150\text{ }^\circ\text{C}$ $V_{CC} = 900\text{ V}, V_P = 1200\text{ V}$ $R_g = 10\text{ }\Omega, V_{GE} = 15\text{ V to } 0\text{ V}$	10	-	-	μs
Diode peak reverse recovery current	I_{rr}	$T_J = 25\text{ }^\circ\text{C}$	-	13	18	A
		$T_J = 125\text{ }^\circ\text{C}$	-	19	23	
Diode reverse recovery time	t_{rr}	$T_J = 25\text{ }^\circ\text{C}$	-	132	189	ns
		$T_J = 125\text{ }^\circ\text{C}$	-	200	270	
Total reverse recovery charge	Q_{rr}	$T_J = 25\text{ }^\circ\text{C}$	-	858	1700	nC
		$T_J = 125\text{ }^\circ\text{C}$	-	1900	3105	

Note

(1) Energy losses include “tail” and diode reverse recovery

THERMISTOR ELECTRICAL SPECIFICATIONS (T = 25 °C unless otherwise specified)						
PARAMETER	SYMBOL	TEST CONDITIONS	MIN.	TYP.	MAX.	UNITS
Resistance	R ₂₅		4538	5000	5495	Ω
		T _J = 100 °C	468.6	493.3	518	
B value	B	T _J = 25 °C/50 °C	3307	3375	3443	°K

THERMAL AND MECHANICAL SPECIFICATIONS						
PARAMETER	SYMBOL	MIN.	TYP.	MAX.	UNITS	
Junction to case IGBT	R _{thJC} (IGBT)	-	-	0.26	°C/W	
Junction to case DIODE	R _{thJC} (DIODE)	-	-	0.56		
Case to sink, flat, greased surface	R _{thCS} (MODULE)	-	0.02	-		
Mounting torque (M5)		2.7	-	3.3	Nm	
Weight		-	170	-	g	

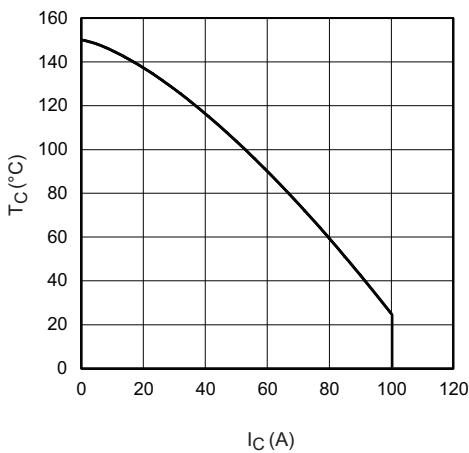


Fig. 1 - Maximum DC Collector Current vs. Case Temperature

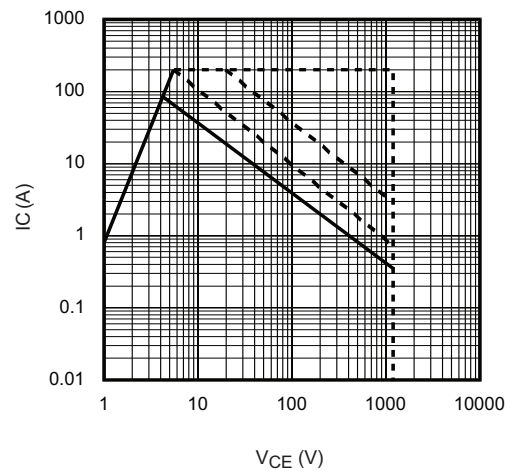
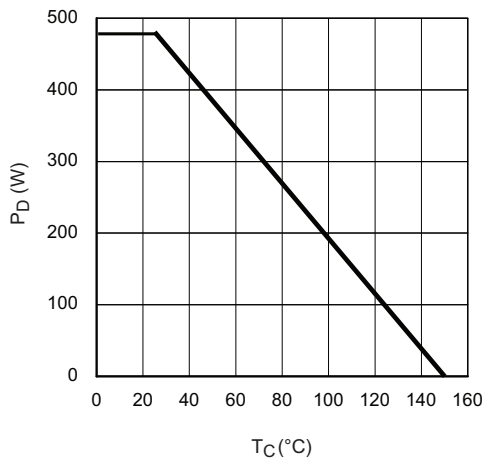
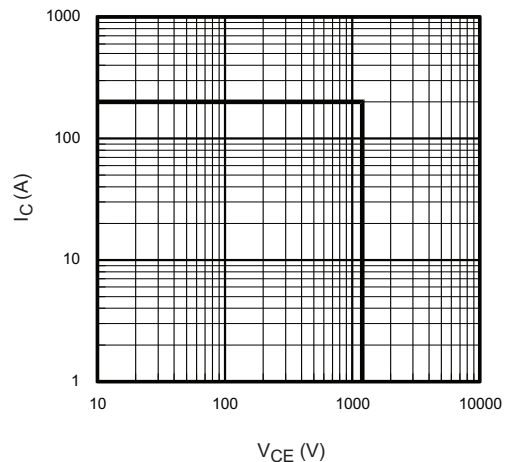

 Fig. 3 - Forward SOA
T_C = 25 °C; T_J ≤ 150 °C


Fig. 2 - Power Dissipation vs. Case Temperature


 Fig. 4 - Reverse Bias SOA
T_J = 150 °C; V_{GE} = 15 V

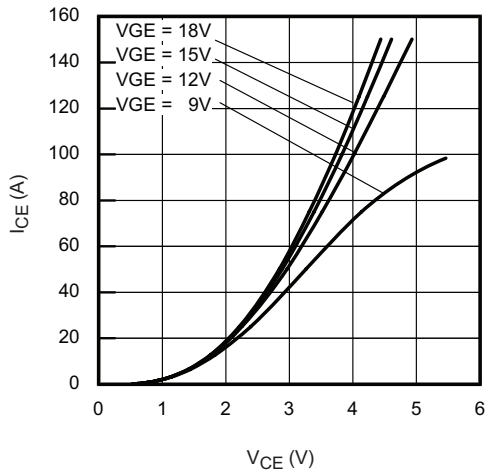


Fig. 5 - Typical IGBT Output Characteristics
 $T_J = 25^\circ\text{C}$; $t_p = 500 \mu\text{s}$

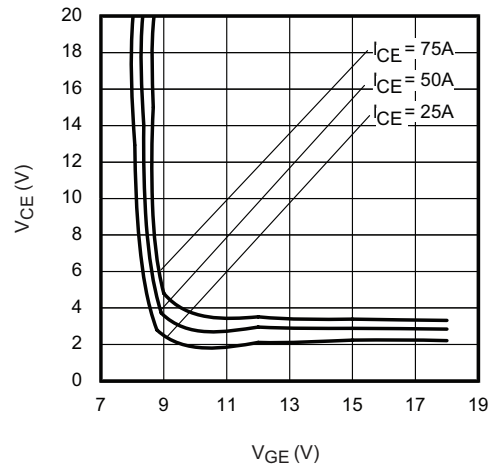


Fig. 8 - Typical V_{CE} vs. V_{GE}
 $T_J = 25^\circ\text{C}$

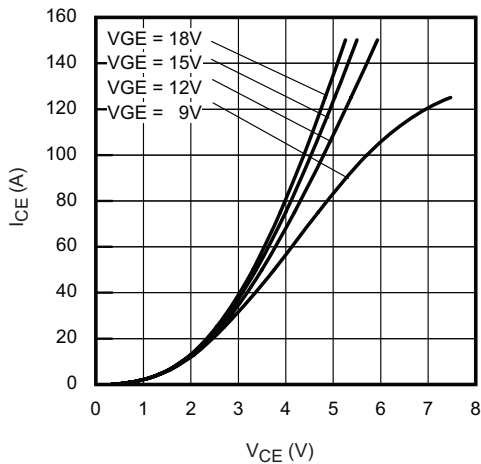


Fig. 6 - Typical IGBT Output Characteristics
 $T_J = 125^\circ\text{C}$; $t_p = 500 \mu\text{s}$

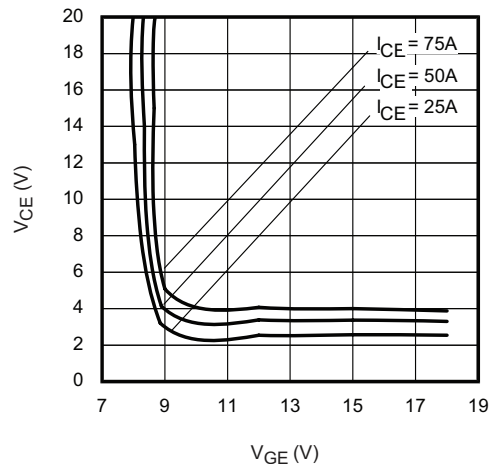


Fig. 9 - Typical V_{CE} vs. V_{GE}
 $T_J = 125^\circ\text{C}$

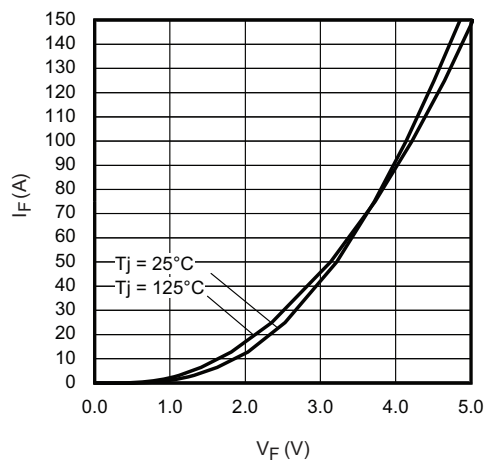


Fig. 7 - Typical Diode Forward Characteristics
 $t_p = 500 \mu\text{s}$

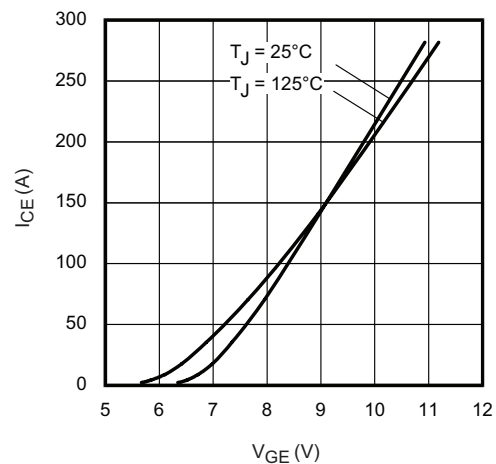


Fig. 10 - Typical Transfer Characteristics
 $V_{CE} = 20 \text{ V}$; $t_p = 500 \mu\text{s}$

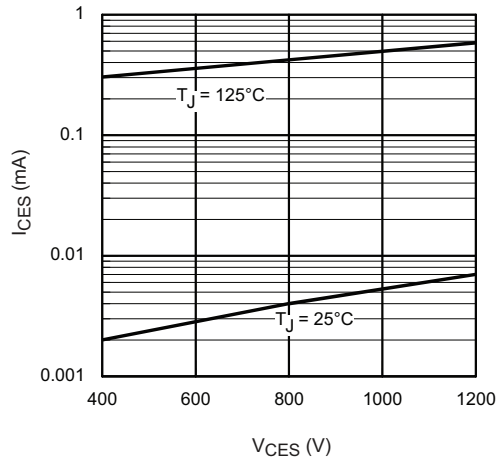


Fig. 11 - Typical Zero Gate Voltage Collector Current

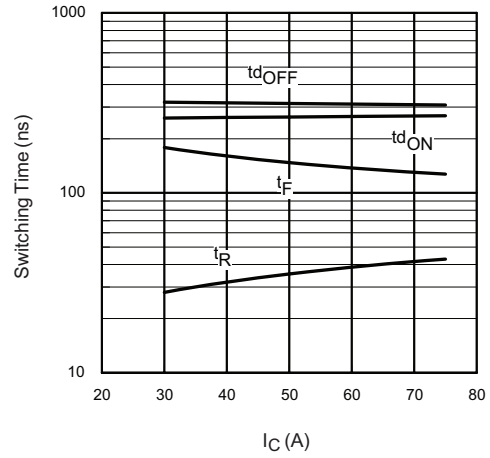
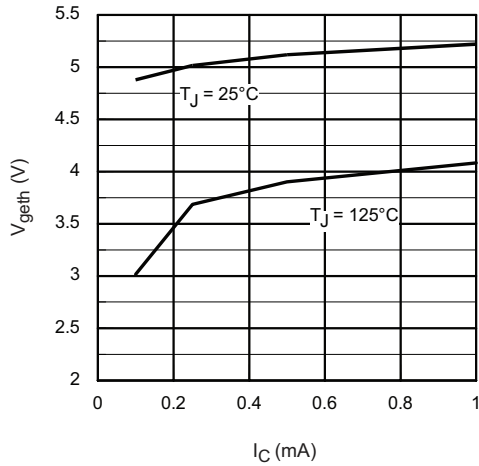
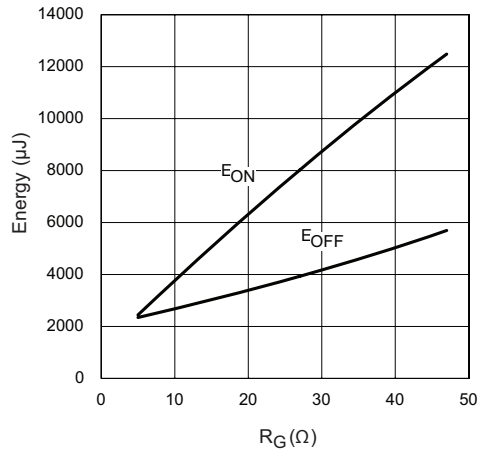
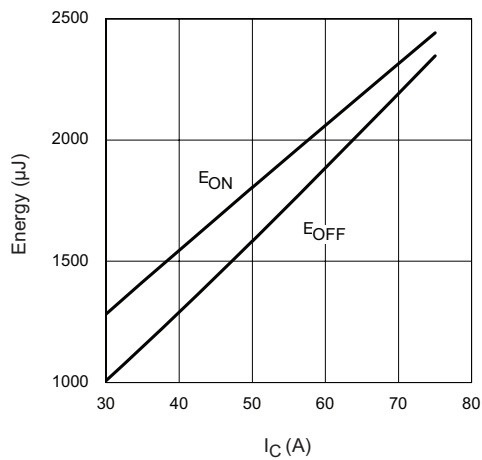
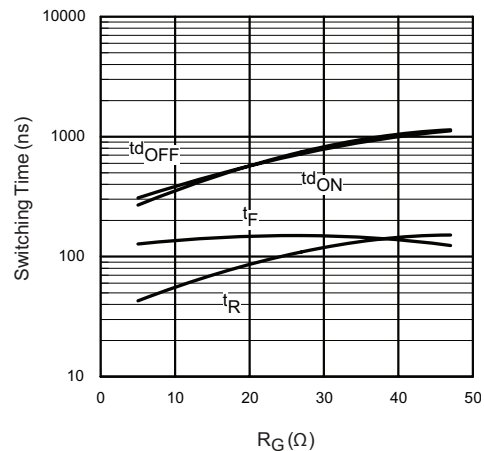

 Fig. 14 - Typical Switching Time vs. I_C
 $T_J = 125^\circ\text{C}$; $L = 500\ \mu\text{H}$; $V_{CC} = 600\ \text{V}$, $R_g = 5\ \Omega$; $V_{GE} = 15\ \text{V}$


Fig. 12 - Typical Threshold Voltage


 Fig. 15 - Typical Energy Loss vs. R_g
 $T_J = 125^\circ\text{C}$; $L = 500\ \mu\text{H}$; $V_{CC} = 600\ \text{V}$, $I_C = 75\ \text{A}$; $V_{GE} = 15\ \text{V}$

 Fig. 13 - Typical Energy Loss vs. I_C
 $T_J = 125^\circ\text{C}$; $L = 500\ \mu\text{H}$; $V_{CC} = 600\ \text{V}$, $R_g = 5\ \Omega$; $V_{GE} = 15\ \text{V}$

 Fig. 16 - Typical Switching Time vs. R_g
 $T_J = 125^\circ\text{C}$; $L = 500\ \mu\text{H}$; $V_{CC} = 600\ \text{V}$, $I_C = 75\ \text{A}$; $V_{GE} = 15\ \text{V}$

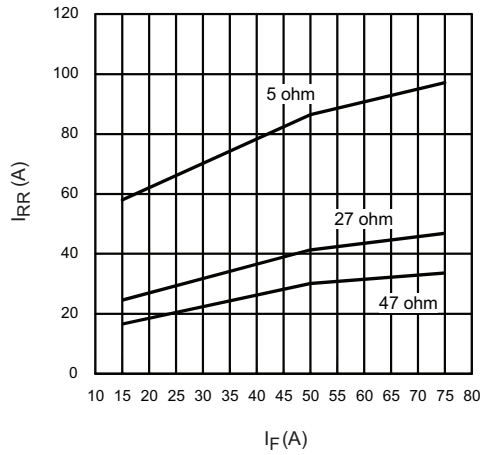


Fig. 17 - Typical Diode I_{RR} vs. I_F
 $T_J = 125^\circ\text{C}$

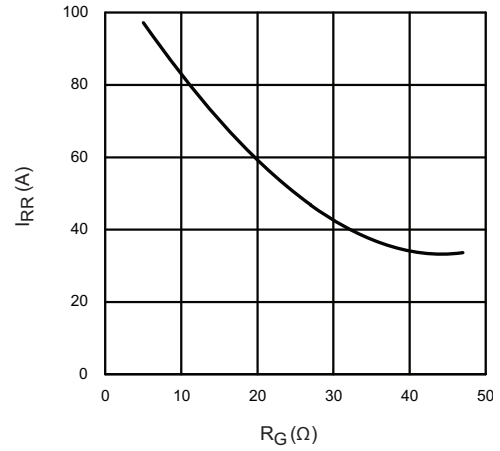


Fig. 19 - Typical Diode I_{RR} vs. R_G
 $T_J = 125^\circ\text{C}; I_F = 75\text{ A}$

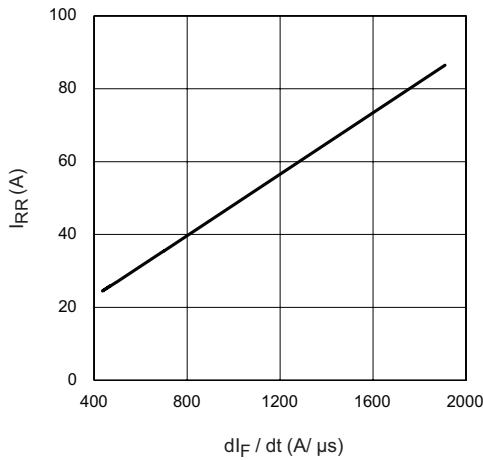


Fig. 18 - Typical Diode I_{RR} vs. dI_F/dt
 $V_{CC} = 600\text{ V}; I_F = 75\text{ A}$

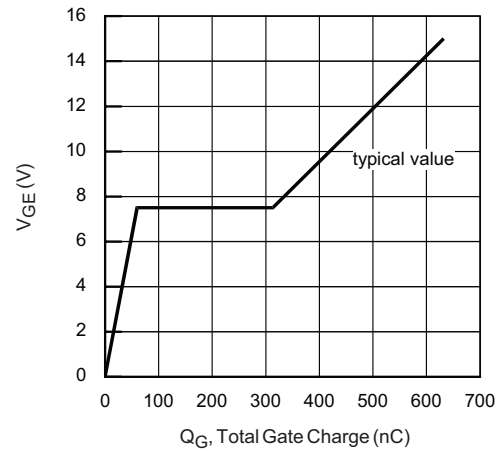


Fig. 20 - Typical Gate Charge vs. V_{GE}
 $I_{CE} = 5.0\text{ A}; L = 600\text{ }\mu\text{H}$

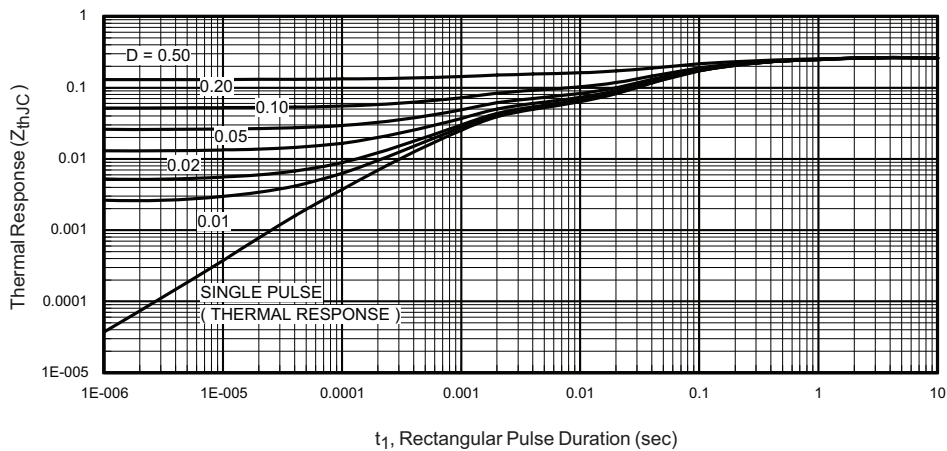


Fig. 21 - Maximum Transient Thermal Impedance, Junction to Case (IGBT)

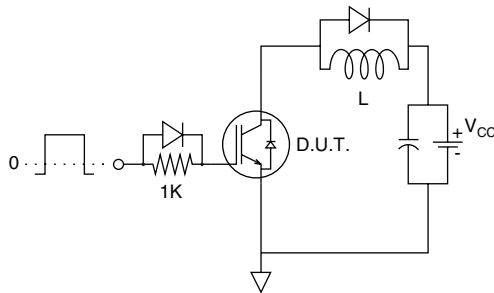


Fig. C.T.1 - Gate Charge Circuit (Turn-Off)

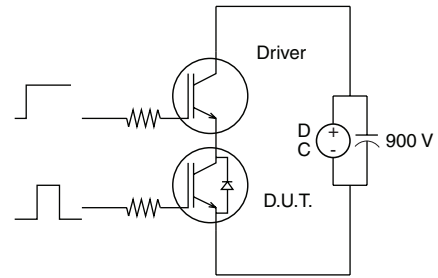


Fig. C.T.3 - S.C. SOA Circuit

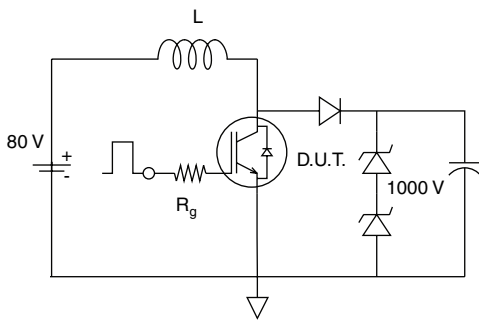


Fig. C.T.2 - RBSOA Circuit

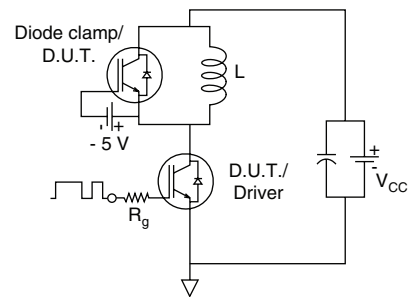


Fig. C.T.4 - Switching Loss Circuit

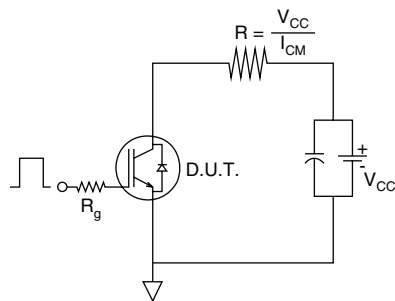


Fig. C.T.5 - Resistive Load Circuit

GB75YF120UT

Vishay High Power Products IGBT Fourpack Module, 75 A

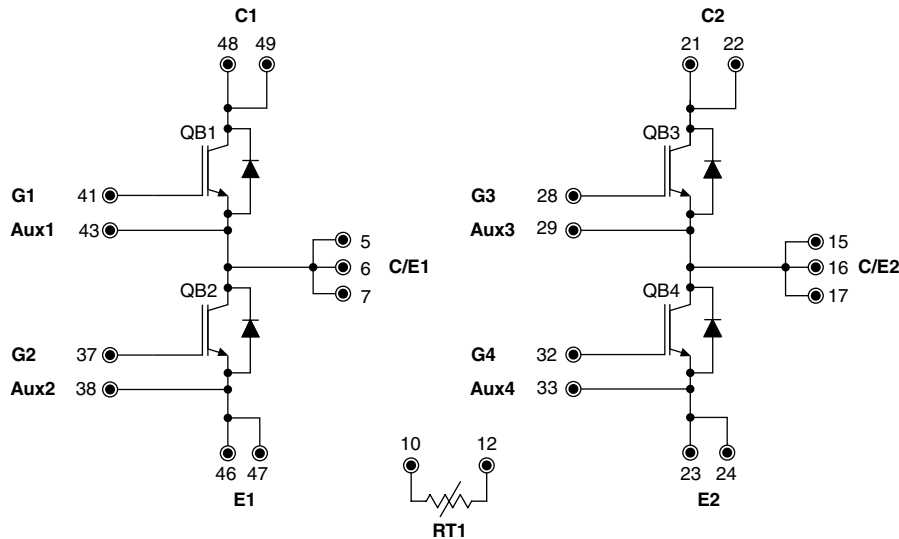


ORDERING INFORMATION TABLE

Device code	G	B	75	Y	F	120	U	T
	①	②	③	④	⑤	⑥	⑦	⑧

- 1** - Insulated gate bipolar transistor (IGBT)
- 2** - B = IGBT Generation 5
- 3** - Current rating (75 = 75 A)
- 4** - Circuit configuration (Y = Fourpack)
- 5** - Package indicator (F = ECONO2)
- 6** - Voltage rating (120 = 1200 V)
- 7** - Speed/type (U = Ultrafast IGBT)
- 8** - T = Thermistor

CIRCUIT CONFIGURATION



LINKS TO RELATED DOCUMENTS

Dimensions	www.vishay.com/doc?95252
------------	--



Disclaimer

ALL PRODUCT, PRODUCT SPECIFICATIONS AND DATA ARE SUBJECT TO CHANGE WITHOUT NOTICE TO IMPROVE RELIABILITY, FUNCTION OR DESIGN OR OTHERWISE.

Vishay Intertechnology, Inc., its affiliates, agents, and employees, and all persons acting on its or their behalf (collectively, "Vishay"), disclaim any and all liability for any errors, inaccuracies or incompleteness contained in any datasheet or in any other disclosure relating to any product.

Vishay makes no warranty, representation or guarantee regarding the suitability of the products for any particular purpose or the continuing production of any product. To the maximum extent permitted by applicable law, Vishay disclaims (i) any and all liability arising out of the application or use of any product, (ii) any and all liability, including without limitation special, consequential or incidental damages, and (iii) any and all implied warranties, including warranties of fitness for particular purpose, non-infringement and merchantability.

Statements regarding the suitability of products for certain types of applications are based on Vishay's knowledge of typical requirements that are often placed on Vishay products in generic applications. Such statements are not binding statements about the suitability of products for a particular application. It is the customer's responsibility to validate that a particular product with the properties described in the product specification is suitable for use in a particular application. Parameters provided in datasheets and/or specifications may vary in different applications and performance may vary over time. All operating parameters, including typical parameters, must be validated for each customer application by the customer's technical experts. Product specifications do not expand or otherwise modify Vishay's terms and conditions of purchase, including but not limited to the warranty expressed therein.

Except as expressly indicated in writing, Vishay products are not designed for use in medical, life-saving, or life-sustaining applications or for any other application in which the failure of the Vishay product could result in personal injury or death. Customers using or selling Vishay products not expressly indicated for use in such applications do so at their own risk and agree to fully indemnify and hold Vishay and its distributors harmless from and against any and all claims, liabilities, expenses and damages arising or resulting in connection with such use or sale, including attorneys fees, even if such claim alleges that Vishay or its distributor was negligent regarding the design or manufacture of the part. Please contact authorized Vishay personnel to obtain written terms and conditions regarding products designed for such applications.

No license, express or implied, by estoppel or otherwise, to any intellectual property rights is granted by this document or by any conduct of Vishay. Product names and markings noted herein may be trademarks of their respective owners.