

Desk Top Power Supplies

**POWER
SOLVE**

www.powersolve.co.uk

PSE65 Series

38-80 Watts Switch Mode

Universal AC Input

The PSE65 series of AC/DC switching power supplies offer up to 80 Watts of continuous output power from a universal AC input.

All models meet CISPR class 'B' and FCC class 'B' emission limits and carry full UL, cUL & TUV(EN60950) safety approvals.



Features

- Single, dual & triple output versions
- Optional output connectors
- 100% burn in
- Wide input voltage range of 90-264VAC
- Input Surge Current Protection
- Overvoltage Protection
- Overcurrent Protection
- Optional mains ON/OFF Switch

Specification

Input Voltage:	90-264 VAC
Input Frequency:	47-63 Hz
Input Current:	1.9A 115VAC, 1.5A 230VAC
Earth Leakage Current:	0.5mA typical, 0.75mA max
Output Voltage:	See table
Output Current:	See table
Output Power:	See table
Ripple & Noise:	0.5% typical, 1% max pk-pk
Line Regulation:	0.5% typical, 1% max
Load Regulation:	3% typical, 5% max
Over Voltage Protection:	112-132% nominal current
Over Current Protection:	110-150% nominal current
Efficiency:	75-88% depending on model
Temperature Coefficient:	All outputs $\pm 0.04\%/^{\circ}\text{C}$ maximum
Transient Response:	4mS 50-100% load change
Hold Up Time:	16mS min @ 100VAC input & full load
Operating Temperature:	0° to +70° C, derate linearly from 100% at 40° C to 50% at 70° C
Storage Temperature:	-40° to +85° C
Relative Humidity:	5 to 95%
Safety Approvals:	UL, cUL, TUV(EN60950), CB & CE
EMC:	Conform to EN55022'B', FCC Part 15'B' and CISPR 22 class 'B'
Options:	Optional Mains ON/OFF switch available

Desk Top Power Supplies



www.powersolve.co.uk

Output Voltage/Current Rating Chart - PSE65 Series

Model	Output Voltage	Output Current	Total Regulation	Max Output Power
PSE65-05	5VDC	13A	7%	65W
PSE65-09	9VDC	8.33A	5%	75W
PSE65-12	12VDC	6.67A	5%	80W
PSE65-15	15VDC	5.33A	5%	80W
PSE65-16	16VDC	5A	5%	80W
PSE65-18	18VDC	4.44A	5%	80W
PSE65-19	19VDC	4.21A	5%	80W
PSE65-24	24VDC	3.33A	5%	80W
PSE65-48	48VDC	1.67A	5%	80W

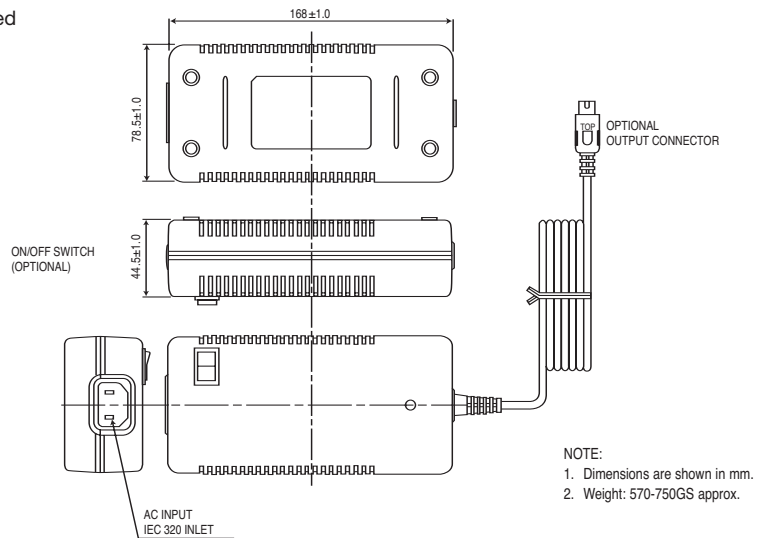
Standard models fitted with 1.8 metre lead terminated with 2.5x5.5x11 female barrel connector, wired centre positive.

Options: Alternative output connectors available, consult sales office with your requirements.
Any voltage available within the range of 3V to 48V DC. AC on/off switch.
Some options subject to minimum order quantities.

Model	Output 1				Output 2				Output 3				Output 4				Max Output Power
	Vnom	Imin	Imax	Total Reg.	Vnom	Imin	Imax	Total Reg.	Vnom	Imin	Imax	Total Reg.	Vnom	Imin	Imax	Total Reg.	
PSE65-3312	+3.3V	0.5A	7A	5%	+12V	0.1A	2.75A	5%	-	-	-	-	-	-	-	-	56W
PSE65-512	+5V	0.5A	7A	5%	+12V	0.3A	3A	5%	-	-	-	-	-	-	-	-	60W
PSE65-515	+5V	0.5A	7A	5%	+15V	0.1A	3A	5%	-	-	-	-	-	-	-	-	60W
PSE65-524	+5V	0.5A	7A	5%	+24V	0.2A	2A	5%	-	-	-	-	-	-	-	-	60W
PSE65-335	+3.3V	1.0A	7A	5%	+5V	0.1A	3A	5%	-	-	-	-	-	-	-	-	38W
PSE65-524N	+5V	0.5A	7A	5%	-24V	0.2A	2A	5%	-	-	-	-	-	-	-	-	60W
PSE65-331212	+3.3V	0.3A	7A	5%	+12V	0.1A	3A	5%	-12V	0A	0.8A	5%	-	-	-	-	65W
PSE65-5125	+5V	0.5A	7A	5%	+12V	0.1A	2.75A	5%	-5V	0A	0.325A	5%	-	-	-	-	65W
PSE65-51212	+5V	0.5A	6A	5%	+12V	0.1A	2.125A	5%	-12V	0A	0.325A	5%	-	-	-	-	60W
PSE65-51515	+5V	0.5A	6A	5%	+15V	0.1A	2.125A	6%	-15V	0A	0.208A	5%	-	-	-	-	65W
PSE65-52424	+5V	0.5A	7A	5%	+24V	0.1A	2A	5%	-24V	0A	0.5A	5%	-	-	-	-	65W
PSE65-52412	+5V	0.5A	6A	5%	+24V	0.1A	1.25A	5%	-12V	0A	0.416A	5%	-	-	-	-	65W
PSE65-33125	+3.3V	0.5A	7A	5%	+12V	0.1A	3A	5%	-5V	0A	0.8A	5%	-	-	-	-	65W
PSE65-5241212	+5V	0.0A	3.5A	5%	+24V	0.1A	1.5A	5%	+12V	0A	0.25A	5%	+12	0A	0.15A	5%	65W

Standard models fitted with 1.2 metre lead terminated in 180°5 pin din plug.

Options: Alternative output connectors available, consult sales office with your requirements.
AC on/off switch.
Some options subject to minimum order quantities.



Powersolve Electronics Ltd, Units 8, 9 and 12 The Paddock, Hambridge Road, Newbury, Berks RG14 5TQ
Tel: 01635 521858 Fax: 01635 523771 Email: sales@powersolve.co.uk