

STANDARD RECOVERY DIODES GEN II DO5

Stud Version

Features

- High surge current capability
- Designed for a wide range of applications
- Stud cathode and stud anode version
- Leaded version available/ wire version available
- Low thermal resistance
- UL approval pending

80 A

Typical Applications

- Battery charges
- Converters
- Power supplies
- Machine tool controls
- Welding

Major Ratings and Characteristics

Parameters	80PF (R)...(W)		Units
	40 to 120		
$I_{F(AV)}$	80		A
@ T_C	140		°C
$I_{F(RMS)}$	126		A
I_{FSM}	@ 50Hz	1500	A
	@ 60Hz	1570	
I^2t	@ 50Hz	11250	A ² s
	@ 60Hz	10230	
V_{RRM} range	400 to 1200		V
T_J range	- 55 to 180		°C

80PF(R)...



case style DO-203AB (DO-5)

80PF(R)...W



case style DO-203AB (DO-5)

ELECTRICAL SPECIFICATIONS

Voltage Ratings

Type number	Voltage Code	V _{RRM} ' maximum repetitive peak reverse voltage V	V _{RSM} ' maximum non-repetitive peak reverse voltage V	I _{RRM} max. @ T _J = 150°C mA
80PF (R)...(W)	40	400	500	9
	80	800	960	
	120	1200	1440	

Forward Conduction

Parameter	80PF(R)...(W)	Units	Conditions		
	40 to 120				
I _{F(AV)} Max. average forward current @ Case temperature	80	A	180° conduction, half sine wave		
	140	°C			
I _{F(RMS)} Max. RMS forward current	126	A			
I _{FSM} Max. peak, one-cycle forward, non-repetitive surge current	1500	A	t = 10ms	No voltage reappplied	Sinusoidal half wave, Initial T _J = 150°C
	1570		t = 8.3 ms	reappplied	
	1260		t = 10ms	100% V _{RRM}	
	1320		t = 8.3 ms	reappplied	
I ² t Maximum I ² t for fusing	11250	A ² s	t = 10ms	No voltage reappplied	Sinusoidal half wave, Initial T _J = 150°C
	10230		t = 8.3ms	reappplied	
	7950		t = 10ms	100% V _{RRM}	
	7200		t = 8.3ms	reappplied	
I ² √t Maximum I ² √t for fusing	112500	A ² √s	t = 0.1 to 10ms, no voltage reappplied		
V _{F(TO)} Low level value of threshold voltage	0.73	V	(16.7% × π × I _{F(AV)} < I < π × I _{F(AV)}), T _J = T _J max.		
r _f Low level value of forward slope resistance	3.0	mΩ	(16.7% × π × I _{F(AV)} < I < π × I _{F(AV)}), T _J = T _J max.		
V _{FM} Max. forward voltage drop	1.40	V	I _{pk} = 220A, T _J = 25°C, t _p = 400μs rectangular wave		

Thermal and Mechanical Specifications

Parameter	80PF (R)...(W)		Units	Conditions
	40 to 120			
T _J	Max. junction operating temperature range	-55 to 180	°C	
T _{stg}	Max. storage temperature range	-55 to 180		
R _{thJC}	Max. thermal resistance, junction to case	0.30	K/W	DC operation
R _{thCS}	Max. thermal resistance, case to heatsink	0.25		Mounting surface, smooth, flat and greased
T	Allowable mounting torque	3.4 ^{+0-10%}	N m	Tighting on nut (1)
		30	lbf · in	Not lubricated threads
		2.3 ^{+0-10%}	N m	Tighting on Hexagon (2)
		20	lbf · in	Lubricated threads
wt	Approximate weight	15.8 (0.56)	g (oz)	
	Case style	DO-203AB (DO5)		See Outline Table

(1) As general recommendation we suggest to tight on Hexagon and not on nut

(2) Torque must be applicable only to Hexagon and not to plastic structure

ΔR_{thJC} Conduction

(The following table shows the increment of thermal resistance R_{thJC} when devices operate at different conduction angles than DC)

Conduction angle	Sinusoidal conduction	Rectangular conduction	Units	Conditions
180°	0.14	0.10	K/W	T _J = T _J max.
120°	0.16	0.17		
90°	0.21	0.22		
60°	0.30	0.31		
30°	0.50	0.50		

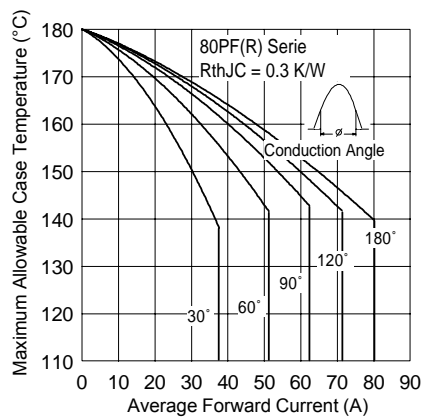


Fig. 1 - Current Ratings Characteristics

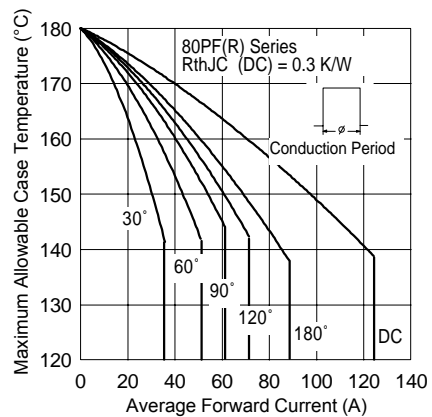
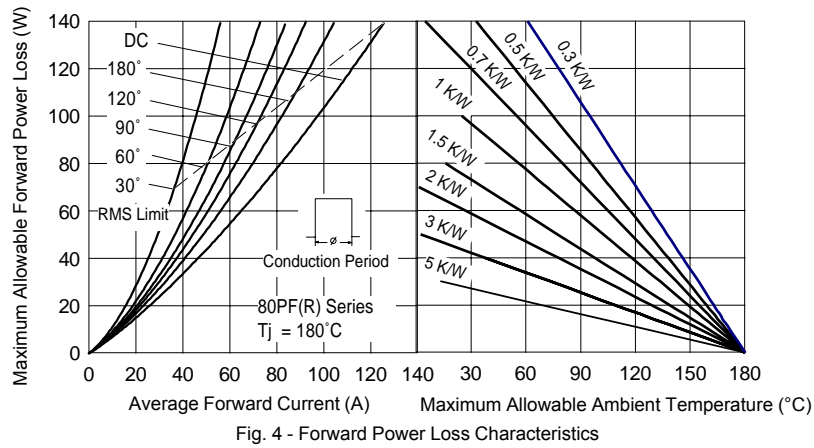
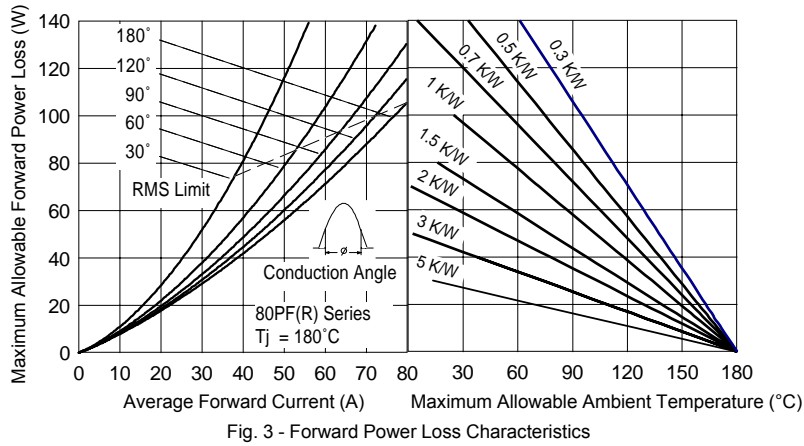


Fig. 2 - Current Ratings Characteristics



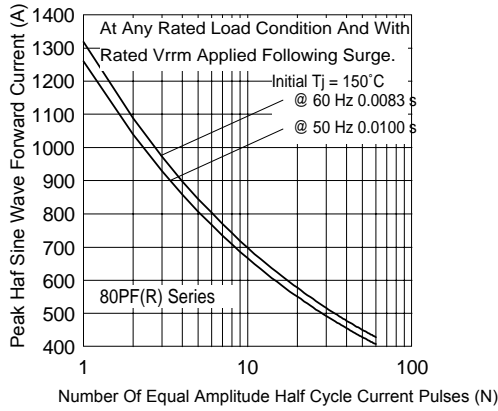


Fig. 5 - Maximum Non -Repetitive Surge Current

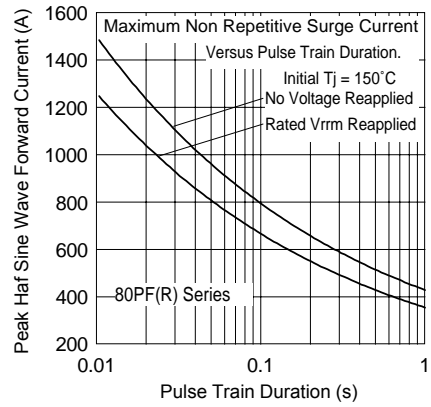


Fig. 6 - Maximum Non -Repetitive Surge Current

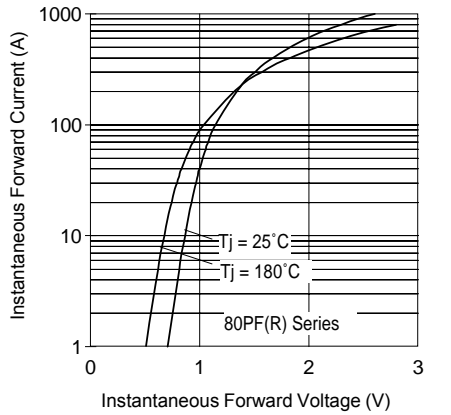


Fig. 7 - Forward Voltage Drop Characteristics

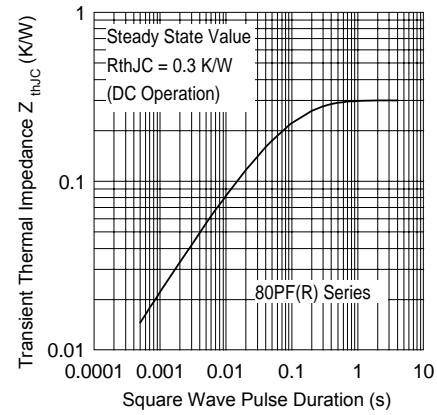
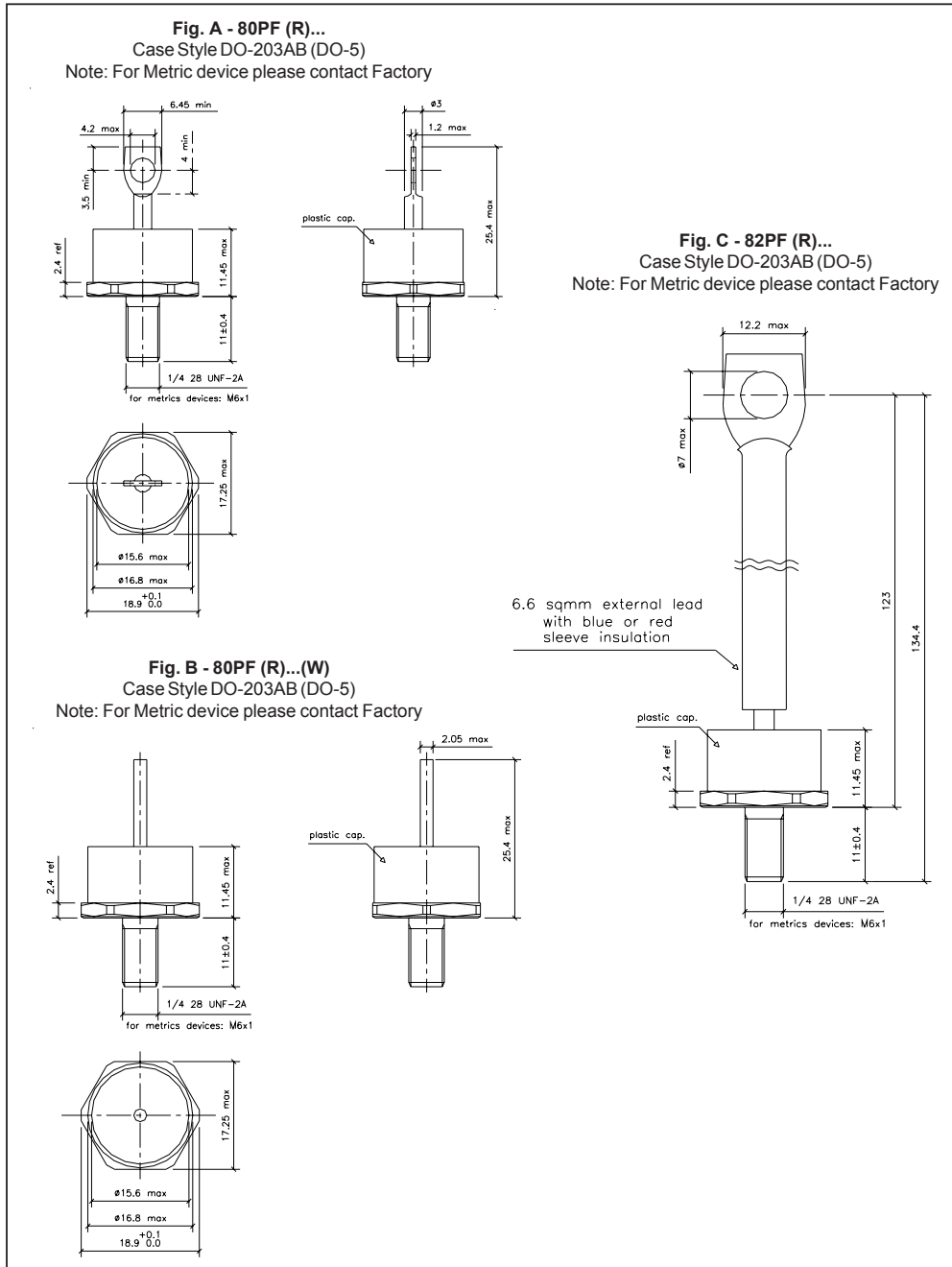


Fig. 8 - Thermal Impedance Z_{thJC} Characteristics

Outline Table



Ordering Information Table

Device Code											
	<table border="1" style="margin: auto;"> <tr> <td style="padding: 5px;">80</td> <td style="padding: 5px;">PF</td> <td style="padding: 5px;">R</td> <td style="padding: 5px;">120</td> <td style="padding: 5px;">W</td> </tr> <tr> <td style="text-align: center;">①</td> <td style="text-align: center;">②</td> <td style="text-align: center;">③</td> <td style="text-align: center;">④</td> <td style="text-align: center;">⑤</td> </tr> </table>	80	PF	R	120	W	①	②	③	④	⑤
80	PF	R	120	W							
①	②	③	④	⑤							
<p>1 - 80 = Standard device 82 = Isolated lead on standard terminal with silicone sleeve available for 1200V only (Red = Reverse Polarity) (Blue = Normal Polarity)</p> <p>2 - PF = Plastic Package</p> <p>3 - None = Stud Normal Polarity (Cathode to Stud) R = Stud Reverse Polarity (Anode to Stud)</p> <p>4 - Voltage code: Code x 10 = V_{RRM} (See Voltage Ratings table)</p> <p>5 - None = Standard terminal (see Fig. A) - W = Wire terminal (see Fig. B)</p>											

Data and specifications subject to change without notice.
 This product has been designed and qualified for Multiple Level.
 Qualification Standards can be found on IR's Web site.