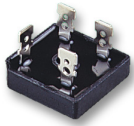


# Glass Passivated Bridge Rectifiers

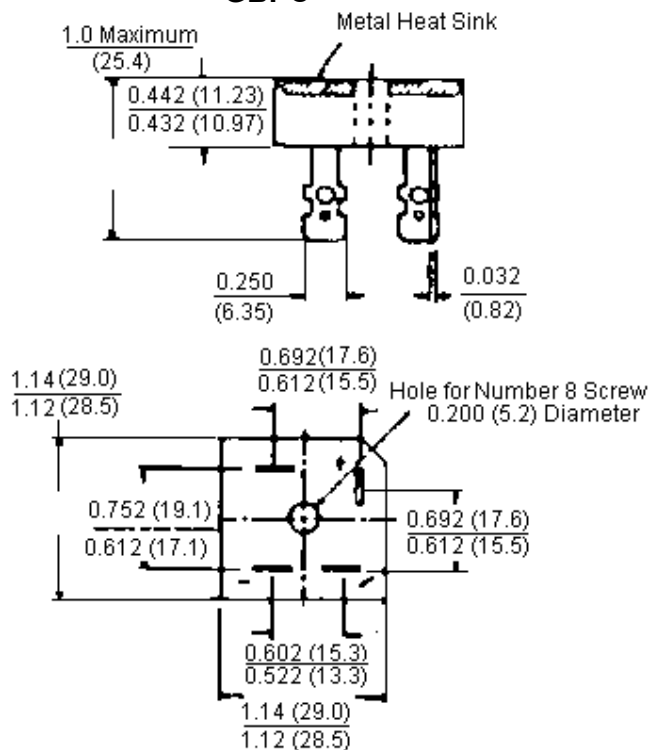
## GBPC Series



### Features:

- Integrally moulded heatsink provide very low thermal resistance for maximum heat dissipation.
- Universal 4-way terminals; snap-on, wrap-around, solder or PC board mounting.
- Surge overload rating to 400 amperes.
- Terminals solderable per MIL-STD-202, Method 208.
- Typical IR less than 0.2 $\mu$ A.
- High temperature soldering guaranteed: 250°C/10 seconds/0.375 inches.
- Isolated voltage from case to terminal over 2500 volts.

### GBPC



Dimensions : Inches (Millimetres)

# Glass Passivated Bridge Rectifiers

## GBPC Series



### Maximum Ratings and Electrical Characteristics

Rating at 25°C ambient temperature unless otherwise specified.

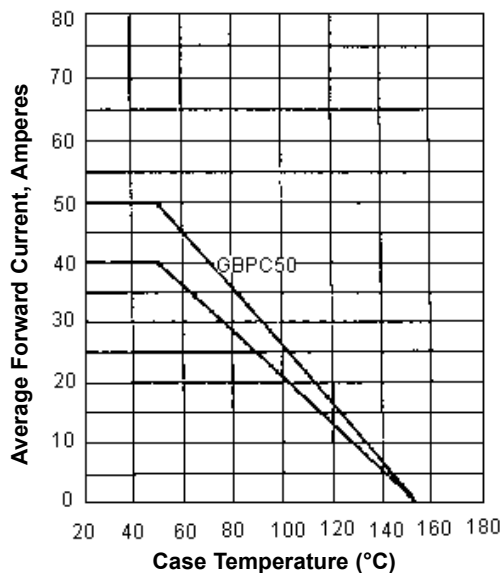
60Hz, resistive or inductive load. For capacitive load, derate current by 20%.

Type Number	Symbols	GBPC5002	GBPC5006	Units
Maximum Recurrent Peak Reverse Voltage	$V_{RRM}$	200	600	Volts
Maximum RMS Voltage	$V_{RMS}$	140	420	
Maximum DC Blocking Voltage	$V_{DC}$	200	600	
Maximum Average Forward Rectified Output Current at $T_C = 55^\circ C$	$I_{(AV)}$	50.0		Amperes
Peak Forward Surge Current Single Sine-wave Superimpose on Rated Load (JEDEC Method)	$I_{FSM}$	400		
Maximum Instantaneous Forward Voltage Drop per Element at Specified Current	$V_F$	1.2		Volts
Maximum Reverse DC Current at Rated DC Blocking Voltage per Element	$I_R$	10.0		$\mu A$
Typical Thermal Resistance (Note 1)	$R_{\theta JC}$	1.5		$^\circ C/W$
Operating and Storage Temperature Range	$T_j, T_{STG}$	-50 to +150		$^\circ C$

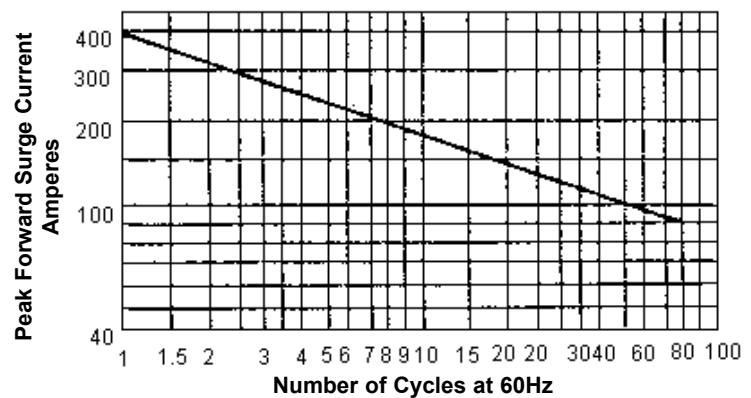
Note : 1) Thermal Resistance from Junction to Case.

### Ratings and Characteristic Curves

Typical Forward Current Derating Curve



Maximum Non-repetitive Surge Current

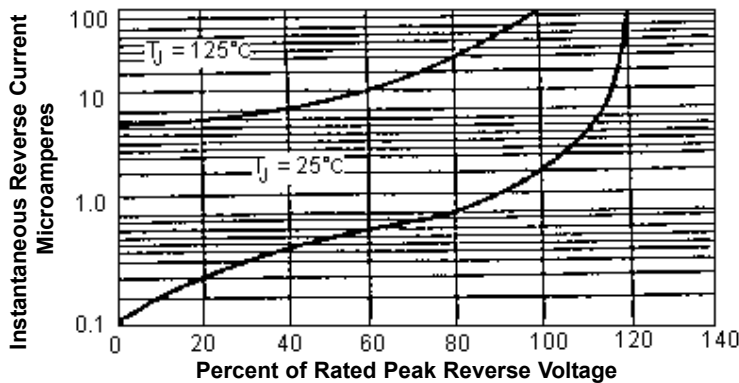


# Glass Passivated Bridge Rectifiers

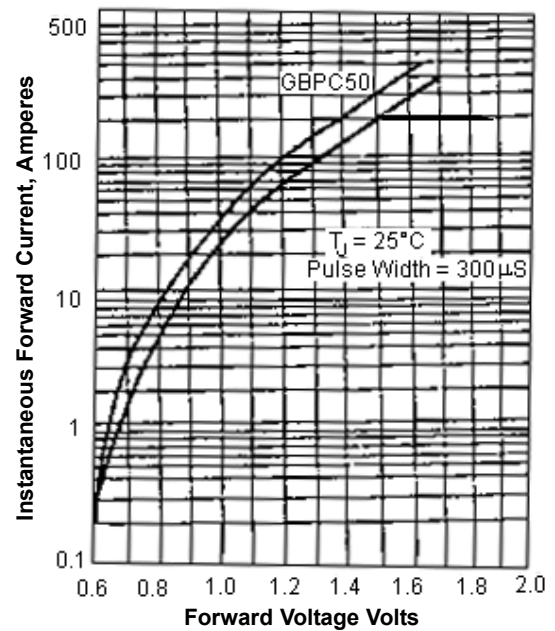
## GBPC Series



Typical Reverse Characteristics



Typical Forward Characteristics



### Part Number Table

Description	Part Number
Bridge Rectifier, 50A, 200V	GBPC5002
Bridge Rectifier, 50A, 600V	GBPC5006

**Disclaimer** This data sheet and its contents (the "Information") belong to the Premier Farnell Group (the "Group") or are licensed to it. No licence is granted for the use of it other than for information purposes in connection with the products to which it relates. No licence of any intellectual property rights is granted. The Information is subject to change without notice and replaces all data sheets previously supplied. The Information supplied is believed to be accurate but the Group assumes no responsibility for its accuracy or completeness, any error in or omission from it or for any use made of it. Users of this data sheet should check for themselves the Information and the suitability of the products for their purpose and not make any assumptions based on information included or omitted. Liability for loss or damage resulting from any reliance on the Information or use of it (including liability resulting from negligence or where the Group was aware of the possibility of such loss or damage arising) is excluded. This will not operate to limit or restrict the Group's liability for death or personal injury resulting from its negligence. SPC Multicomp is the registered trademark of the Group. © Premier Farnell plc 2009.

<http://www.farnell.com>  
<http://www.newark.com>  
<http://www.cpc.co.uk>

