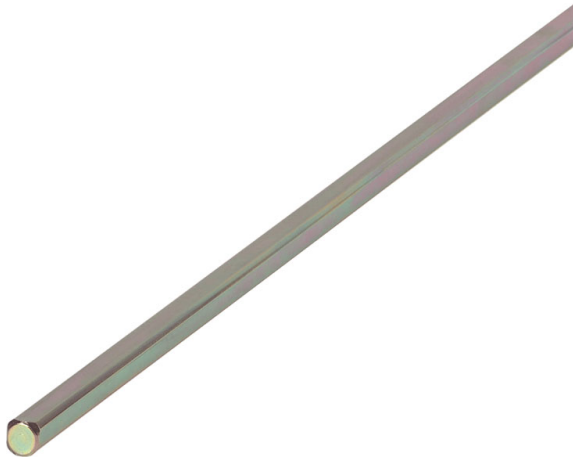


Type: **NZM1/2-XV6**
 Article No.: **260191**
 Sales text **Extension shaft**



Ordering information			
Description			Max. mounting depth: 600 mm
For use with			NZM1(-4), PN1(-4), N(S)1(-4) NZM2(-4), PN2(-4), N(S)2(-4)

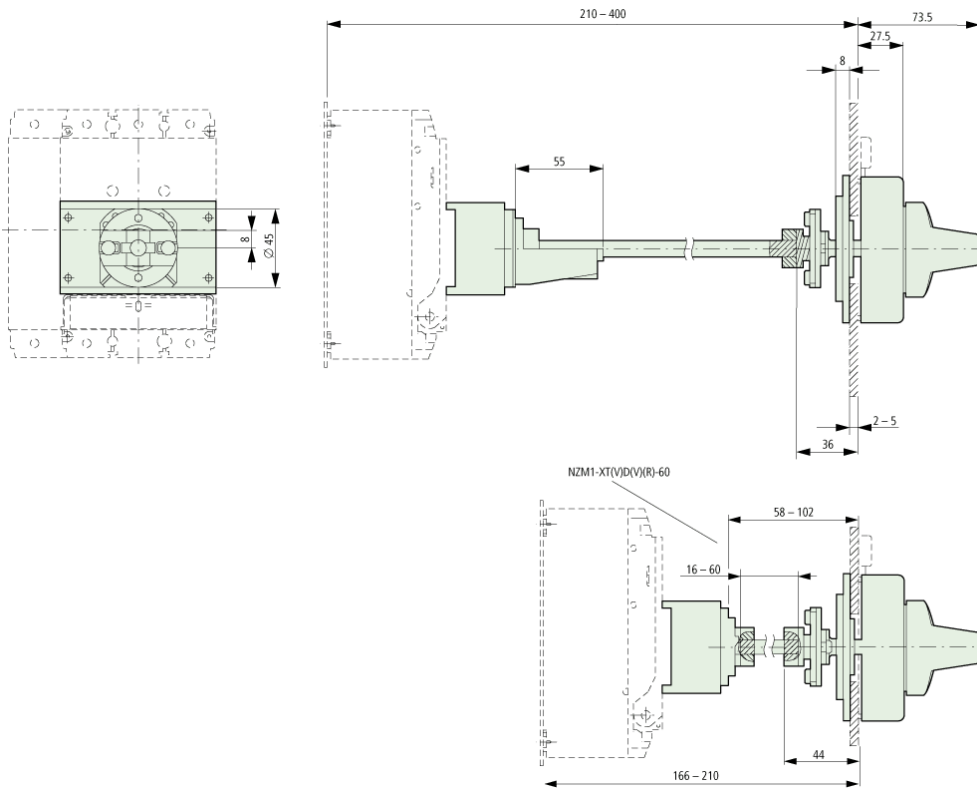
Note concerning the product

Can be cut to required length

Notes concerning the product group

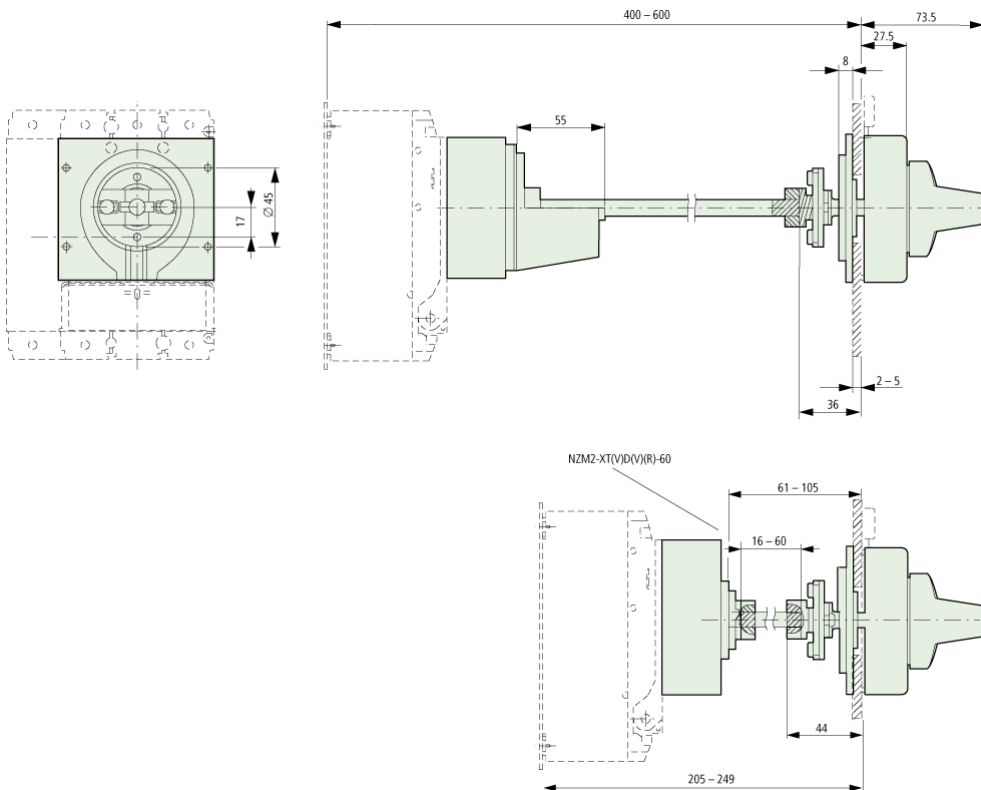
Circuit-breaker can also be installed in a lying position 90 ° left/right, with the handle still in the same position.

Dimensions



in connection with NZM1-XT(V)D(V)(R) door coupling rotary handle

Dimensions



in connection with NZM2-XT(V)D(V)(R) door coupling rotary handle

Moeller GmbH, Hein-Moeller-Str. 7-11, D-53115 Bonn
E-Mail: catalog@moeller.net, Internet: www.moeller.net, <http://catalog.moeller.net>
Copyright 2006 by Moeller GmbH. HPL-C2007G V2.1