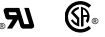


# Surface Mount Fuses

## Thin-Film Surface Mount

### RoHS Pb SlimLine™ Lead-Free 0402 Very Fast-Acting Fuse 435 Series



- RoHS compliant and Lead-Free
- The SlimLine 0402 fuse is the world's smallest fuse available.
- Ideal for space sensitive applications including disc drives and handheld devices including mobile phones, cameras and personal communication devices.
- The low profile flat surface and full-faced termination are designed for superior performance in surface mount assembly processes.

#### ELECTRICAL CHARACTERISTICS:

| % of Ampere Rating | Opening Time at 25°C        |
|--------------------|-----------------------------|
| 100%               | 4 hours, <b>Minimum</b>     |
| 200%               | 5 seconds, <b>Maximum</b>   |
| 300%               | 0.2 seconds, <b>Maximum</b> |

**AGENCY APPROVALS:** Recognized under the Components Program of Underwriters Laboratories and Certified by CSA.

**AGENCY FILE NUMBERS:** UL E10480, CSA LR 29862.

**INTERRUPTING RATINGS:** 35A @ 32 VDC

#### ENVIRONMENTAL SPECIFICATIONS:

**Operating Temperature:** -55°C to 90°C. Consult temperature derating chart on page 4. For operation above 90°C contact Littelfuse.

**Vibration:** Per MIL-STD-202F.

**Insulation Resistance (After Opening):** Greater than 10,000 ohms.

**Resistance To Soldering Heat:** Withstands 60 seconds above 200°C up to 260°C, maximum.

**Thermal Shock:** Withstands 5 cycles of -55°C to 125°C.

#### PHYSICAL SPECIFICATIONS:

**Materials:** Body: Epoxy Substrate  
Terminations: 100% Copper/Nickel/Tin  
Cover Coat: Conformal Coating

#### Soldering Parameters(see page 3 for typical soldering profile):

Reflow Solder— 260°C, 30 seconds maximum

**PACKAGING SPECIFICATIONS:** 8mm Paper Tape and Reel per EIA-RS481-1 (IEC 286, part 3); 10,000 per reel, add packaging suffix, KR.

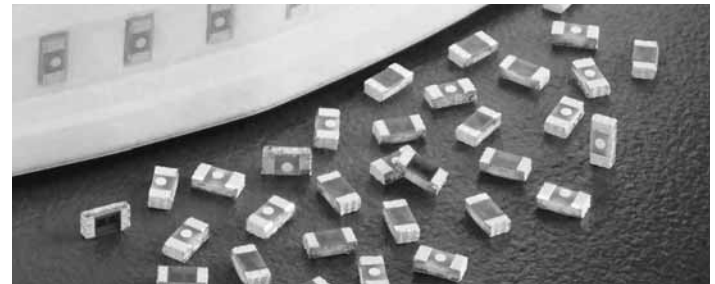
#### PATENTED

#### ORDERING INFORMATION:

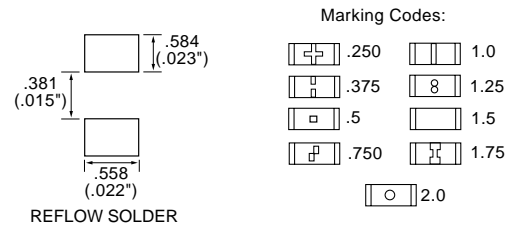
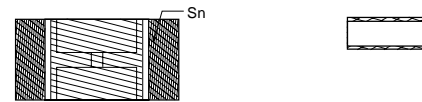
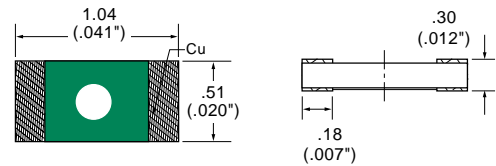
| Catalog Number | Ampere Rating | Voltage Rating | Nominal Resistance Cold Ohm <sup>1</sup> | Nominal Melting I <sup>2</sup> t (A <sup>2</sup> Sec.) |
|----------------|---------------|----------------|--|--|
| 0435.250       | .25           | 32             | 0.220                                    | 0.0025   |
| 0435.375       | .375          | 32             | 0.185                                    | 0.0035   |
| 0435.500       | .5            | 32             | 0.150                                    | 0.0053   |
| 0435.750       | .75           | 32             | 0.105                                    | 0.012  |
| 0435 001.      | 1             | 32             | 0.072                                    | 0.020  |
| 0435 1.25      | 1.25          | 32             | 0.060                                    | 0.035  |
| 0435 01.5      | 1.5           | 32             | 0.047                                    | 0.056  |
| 0435 1.75      | 1.75          | 32             | 0.038                                    | 0.075  |
| 0435 002.      | 2             | 32             | 0.030                                    | 0.100  |

<sup>1</sup> Measured at 10% of rated current, 25°C.

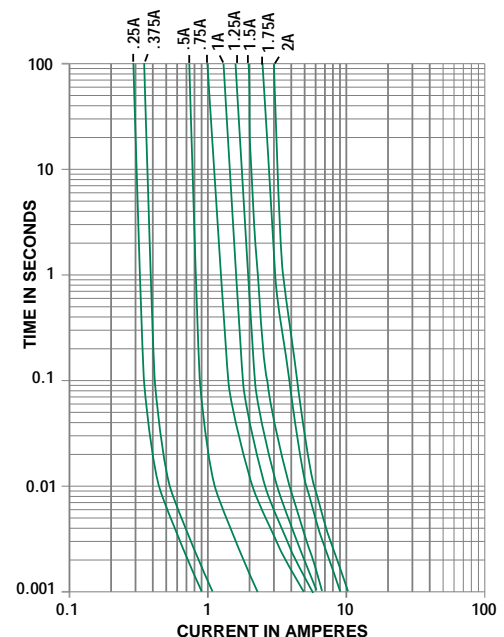
<sup>2</sup> Measured at rated voltage.



#### Reference Dimensions:



#### Average Time Current Curves



10 SURFACE MOUNT FUSES