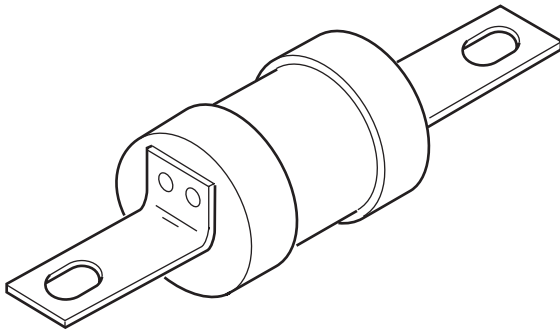


# Industrial HRC Fuse Link

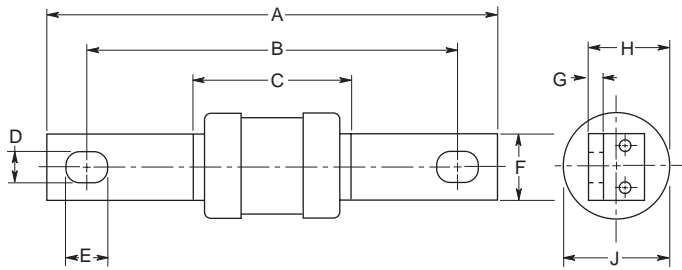
## 31 x 112mm, BS88, IEC 269-1

### Center Bolted Tags

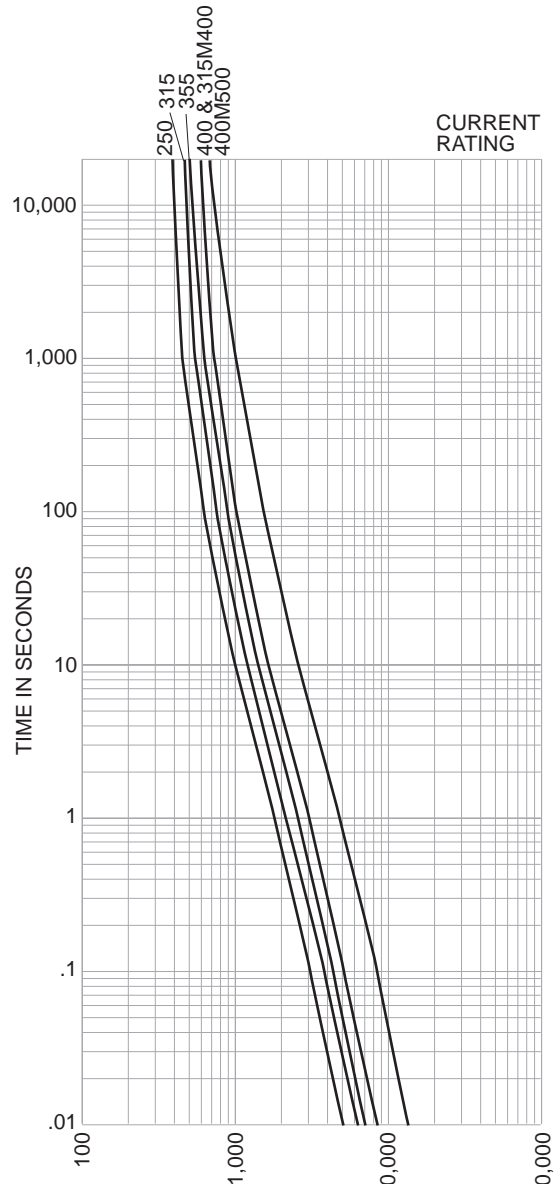


CATALOG SYMBOL: ED  
 INDUSTRIAL HRC FUSE  
 CENTER BOLTED TAGS  
 PACKAGE QUANTITY: 1  
 80KA INTERRUPTING RATING  
 MOUNTS ON BH-1131 MODULAR FUSEBLOCK

**Dimensional Data:**



Time-Current Characteristic Curve (Full Size Curves Available)



**Electrical Characteristics**

Catalog Number	Ampere Rating	I <sup>2</sup> T (Amp <sup>2</sup> Seconds)			Nom Watts Loss	Rated Voltage	Dimensions (Inches/mm)									
		Pre-Arcing	Total At 240V	Total At 415V			A	B	C	D	E	F	G	H	J	
ED250	250	200,000	340,000	480,000	18	415AC	136.0	111.0	47.0	9.0	12.5	19.0	3.2	22.5	31.0	
ED315	315	265,000	450,000	635,000	22		136.0	110.0	50.0	9.0	12.5	25.4	4.7	31.0	38.0	
ED315M400	315M400	475,000	810,000	1,150,000	21		136.0	110.0	50.0	9.0	12.5	25.4	4.7	31.0	38.0	
ED355	355	360,000	610,000	865,000	24		136.0	110.0	50.0	9.0	12.5	25.4	4.7	31.0	38.0	
ED400	400	475,000	810,000	1,150,000	29		135.5	114.0	75.0	9.5	12.5	25.4	4.7	31.5	59.0	
ED400M500	400M500	1,200,000	—	2,700,000	38	550AC	135.5	114.0	75.0	9.5	12.5	25.4	4.7	31.5	59.0	

The only controlled copy of this BIF document is the electronic read-only version located on the Bussmann Network Drive. All other copies of this BIF document are by definition uncontrolled. This bulletin is intended to clearly present comprehensive product data and provide technical information that will help the end user with design applications. Bussmann reserves the right, without notice, to change design or construction of any products and to discontinue or limit distribution of any products. Bussmann also reserves the right to change or update, without notice, any technical information contained in this bulletin. Once a product has been selected, it should be tested by the user in all possible applications.