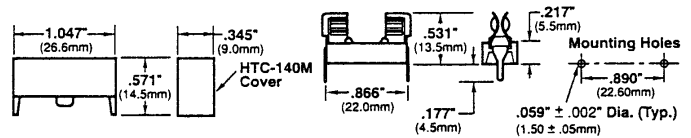


| DISTRIBUTION | A        | THIRD ANGLE PROJECTION  | TOLERANCES unless otherwise stated FRACTIONS  | DECIMALS  | USED ON  |
|--------------|----------|---|---|---|--|
|              |          | <p>926-851</p>  | <p>ALL DIMENSIONS IN MILLIMETRES</p> <p>PINS SHALL BE CAPABLE OF DIRECT INSERTION INTO A JIG AS SHOWN BELOW SO THAT THE BASE OF THE CLIP CONTACTS THE SEATING PLANE, WITHOUT THE NEED TO BEND THE PINS TO EFFECT ENTRY.</p> <p>EXCEPT WHERE TOLERANCED, DIMENSIONS ARE NOMINAL FOR INFORMATION ONLY.</p> <p>Refer to Gauge GA262.</p> | <p>COOPER INDUSTRIES INC.<br/>The copyright in this drawing is the property of COOPER INDUSTRIES INC. and this drawing is only issued for the express purpose authorised by COOPER INDUSTRIES INC. Any use of this drawing, or the copying thereof or the disclosure thereof to a third party is forbidden unless previously authorised by the copyright owners, in writing.</p> <p>MATL. &amp; SPEC<br/>Hard Brass<br/>30 SWG</p> <p>FINISH<br/>Pure Tin Plated<br/>4 to 10µ</p> <p>DESCRIPTION<br/>FUSE CLIP<br/>HTC-210M<br/>For Ø 5mm Fuses</p> | <p>DRAWING No.<br/>TS-20-10-HTC210M</p> <p>SHEET OF SHEETS</p>   |
|              |          | <p>27 AUG 1996</p> <p>10956 27.05.94</p> <p>10875 8.2.94</p> <p>10827 15.1.94</p> | <p>THIS PRINT HAS BEEN ISSUED OUTSIDE OF THE PRODUCTION SYSTEMS THEREFOR. CHECK ISSUE NO. WITH DRAWING OFFICE.</p>  | <p>INFORMATION SHEET</p>  | <p>Bussmann Division<br/>Cooper (U.K.) Limited<br/>Frome, Somerset BA11 1PP<br/>England.</p> <p><b>COOPER</b><br/>Bussmann</p> |
| ISS          | REVISION | DATE  | DRAWN   | P. J. B.  |  |
|              |          |   | TRACED  |   |  |
|              |          |   | APP.  | NJK   |  |

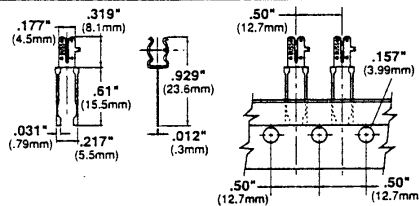
**Printed Circuit Board for 5mm Diameter Fuses**

**HTC-15M, HTC-140M, HTC-150M**  
**PCB Fuseblock and Snap-On Cover**  
 Ratings: 250V, 6.3A, 1.6W



BIF document: 2110

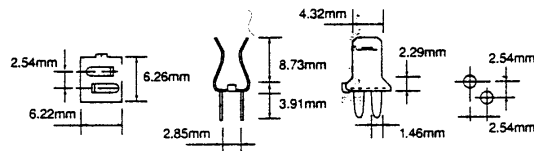
**HTC-200M**  
**PC Board Mount Fuseclip**  
**Construction:** Tin plated bronze  
 Tape and Fan Fold packed  
 Ammo Pack (HTC-200M) 1000 pieces per box



BIF document: 2110



**HTC-210M** 926-851  
**PC Board Mounted Fuseclip with End Stops**

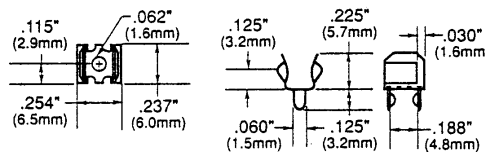


BIF document: 2110

**1A3399 Series**  
**Fuseclips with End Stops and Straight Leads**

| Catalog Number | Clip Material*    | Finish     |
|----------------|-------------------|------------|
| 1A3399-01      | Beryllium Copper* | Silver     |
| 1A3399-04      | Beryllium Copper* | Bright Tin |
| 1A3399-10      | Spring Bronze     | Bright Tin |

\*Beryllium copper recommended for currents higher than 15 amps (1/4" clips).



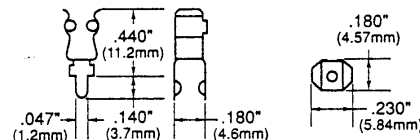
BIF document: 2131

**1A5018 Series**  
**Fuseclips with End Stops and Straight Leads**

HIGH PROFILE

| Catalog Number | Clip Material* | Finish     |
|----------------|----------------|------------|
| 1A5018-7       | Spring Bronze  | Silver     |
| 1A5018-10      | Spring Bronze  | Bright Tin |

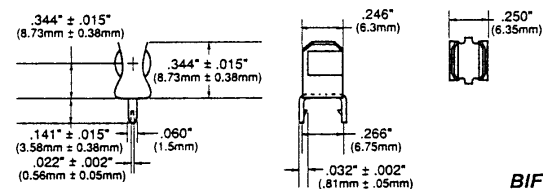
\*Beryllium copper recommended for currents higher than 15 amps (1/4" clips).



BIF document: 2131

**1A5601 Series**  
**Fuseclips (0-7 amps)**

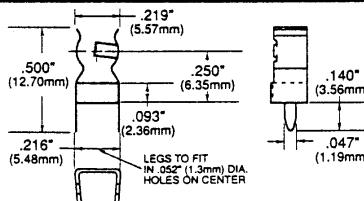
| Catalog Number | Clip Material | Finish     |
|----------------|---------------|------------|
| 1A5601         | Brass         | Bright Tin |



BIF document: 2131

**1A5602 Series**  
**Fuseclips (0-7 amps)**

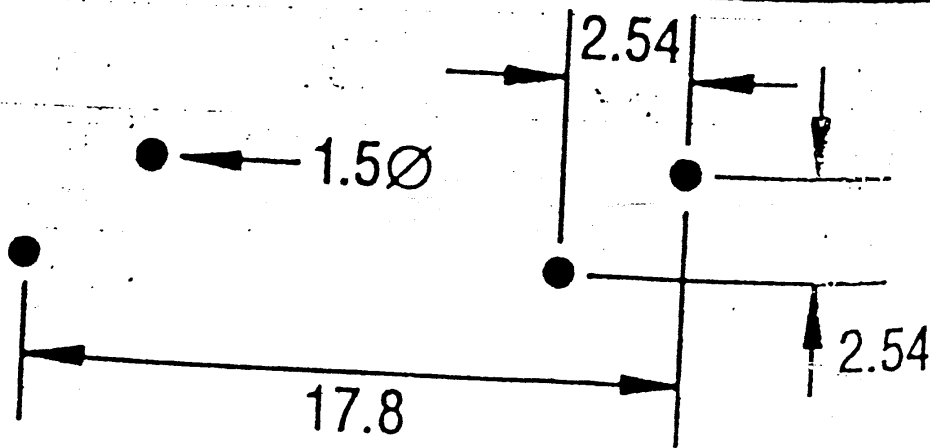
| Catalog Number | Clip Material | Finish     |
|----------------|---------------|------------|
| 1A5602         | Brass         | Bright Tin |



BIF document: 2131



**BUSSMANN**



PCB drilling plan