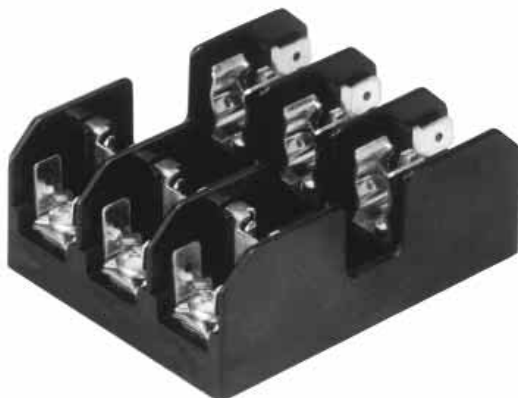


Class CC Fuseblocks

600 Volt, 30 Amps

BC Series



Catalog Symbol: BC Series

Class CC Fuseblocks

For use with Class CC Fuses (Bussmann LP-CC, KTK-R, and FRQ-R)

Ampere Rating: 1/10 to 30A

Voltage Rating: 600V

Withstand Rating: 200,000A RMS Sym.

Agency Information:

UL Listed, UL 512, Guide IZLT, File E14853

CSA Certified, C22.2 No. 39, Class 6225-01, File 47235

UL Flammability: 94VO

Materials: Base - Thermoplastic

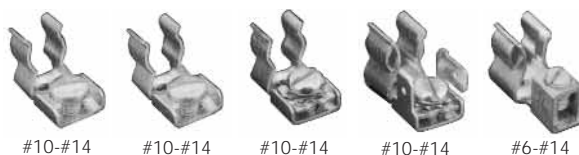
Clips - Bright tin-plated bronze

DIN-RAIL Adapters: DRA-1 and DRA-2

Catalog Data

| Amps | Poles | Terminal Type | | | | |
|------|-------|---------------|---------------------------|----------------|----------------------------------|---------|
| | | Screw | Screw with Quick Connect* | Pressure Plate | Pressure Plate w/ Quick Connect* | Box Lug |
| 1/10 | 1 | BC6031S | BC6031SQ | BC6031P | BC6031PQ | BC6031B |
| to | 2 | BC6032S | BC6032SQ | BC6032P | BC6032PQ | BC6032B |
| 30 | 3 | BC6033S | BC6033SQ | BC6033P | BC6033PQ | BC6033B |

Wire
Range
CU Only

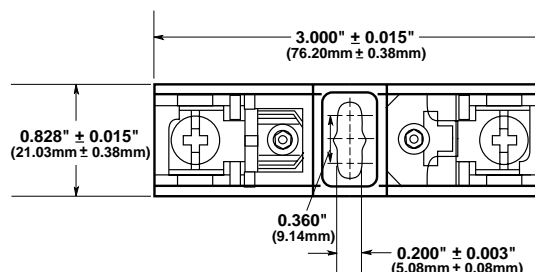


* QUICK CONNECT RATED FOR 20A MAXIMUM.

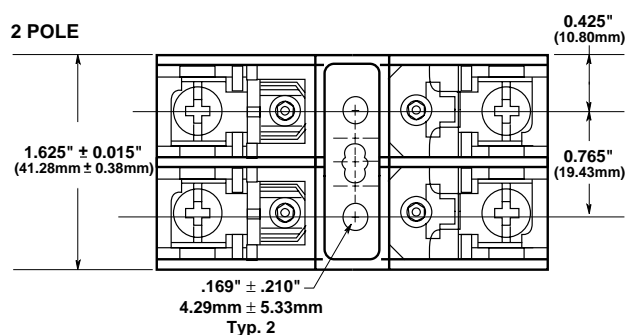
CE logo denotes compliance with European Union Low Voltage Directive (50-1000 Vac, 75-1500 Vdc). Refer to Data Sheet: 8002 or contact Bussmann Application Engineering at 636-527-1270 for more information.

Dimensional Data

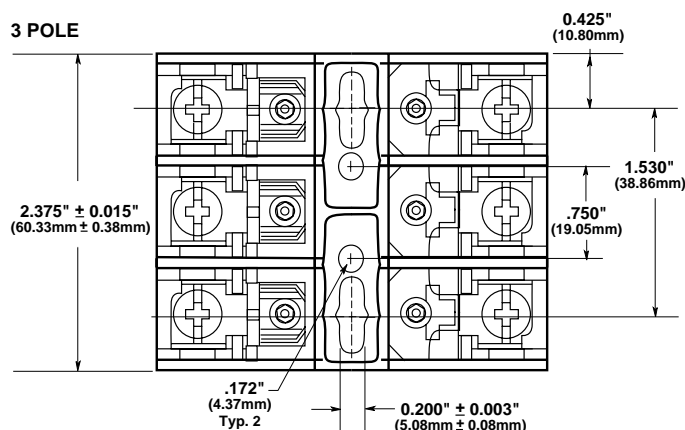
1 POLE



2 POLE



3 POLE



FUSEBLOCK LABEL (EXAMPLE SHOWN)

