

Type
AK 03
 100 x 150 x 96 mm



Top end entries:
 3 x M20
 bottom:
 2 x M20 / M25
 sidewalls, each:
 2 x M20
 base, floor: 1 x M20

Description	Order N°	Packing Qty
IP 65 mini distribution box, 3 way units, $U_i=400$ V, PE/N terminals 2 x 4-pole, 6/16 mm ² , 3 top end elastic entries, with cover and marker strips insulating seals and supplementary double membrane spouts NEW	735 403 01	12
<i>Recommended accessories:</i>		
IP 68 cable gland with lock-nut		
M20 (seal range 6 - 12 mm)	227 420 01	50
M20 (" 7 - 14 mm)	227 421 01	30
M25 (" 7 - 16 mm)	227 425 01	25
<i>IP 66 double membrane spouts</i>		
M20 (seal range 7 - 12 mm)	260 420 01	600 / 50
M25 (" 9 - 16 mm)	260 425 01	600 / 50

AK 05
 125 x 200 x 122 mm



Top end entries:
 4 x M20
 1 x M20 / M25
 sidewalls, each:
 2 x M20
 base, floor: 1 x M20

IP 65 mini distribution box, 5 way units, $U_i=400$ V, PE/N terminals 2 x 5-pole, 6/16 mm ² , 4 top end elastic entries, with cover and marker strips insulating seals and supplementary double membrane spouts NEW	735 405 01	9
<i>Recommended accessories:</i>		
IP 68 cable gland with lock-nut		
M20 (seal range 6 - 12 mm)	227 420 01	50
M20 (" 7 - 14 mm)	227 421 01	30
M25 (" 7 - 16 mm)	227 425 01	25
<i>IP 66 double membrane spouts</i>		
M20 (seal range 7 - 12 mm)	260 420 01	600 / 50
M25 (" 9 - 16 mm)	260 425 01	600 / 50

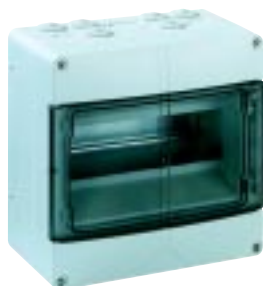
AK II MINI DISTRIBUTION BOX



Type

AK 09

200 x 200 x 122 mm



Top end entries:
8 x M20
1 x M25 / M32
sidewalls, each:
2 x M20
base, floor: 2 x M20 / M25

Description

IP 65 mini distribution box,
9 way units, $U_i=400$ V,
PE/N terminals 2 x 7-pole, 6/16 mm²
6 top end elastic entries,
with cover and marker strips
insulating seals and supplementary double membrane spouts

NEW

Order N°

Packing Qty

735 409 01 6

Recommended accessories:

IP 68 cable gland with lock-nut

M20 (seal range 6 - 12 mm)

M20 (" 7 - 14 mm)

M25 (" 7 - 16 mm)

M32 (" 11 - 21 mm)

227 420 01 50

227 421 01 30

227 425 01 25

227 432 01 10

IP 66 double membrane spouts

M20 (seal range 7 - 12 mm)

M25 (" 9 - 16 mm)

M32 (" 14 - 21 mm)

260 420 01 600 / 50

260 425 01 600 / 50

260 432 01 300 / 25

AK 12

250 x 200 x 122 mm



Top end entries:
8 x M20
2 x M20 / M25
1 x M32 / M40
sidewalls, each:
2 x M20
base, floor: 2 x M20 / M25

IP 65 mini distribution box,
12 way units, $U_i=400$ V,
PE/N terminals 2 x 12-pole, 6/16 mm²
8 top end elastic entries,
with cover and marker strips
insulating seals and supplementary double membrane spouts

NEW

735 412 01 4

Recommended accessories:

NS 35 for EIB

IP 68 cable gland with lock-nut

M20 (seal range 6 - 12 mm)

M20 (" 7 - 14 mm)

M25 (" 7 - 16 mm)

M32 (" 11 - 21 mm)

M40 (" 16 - 28 mm)

562 935 01 1

227 420 01 50

227 421 01 30

227 425 01 25

227 432 01 10

227 440 01 5

IP 66 double membrane spouts

M20 (seal range 7 - 12 mm)

M25 (" 9 - 16 mm)

M32 (" 14 - 21 mm)

260 420 01 600 / 50

260 425 01 600 / 50

260 432 01 300 / 25

2

Type
AK 14
300 x 300 x 142 mm



Top end entries:
17 x M20
2 x M20 / M25
1 x M32 / M40
bottom:
15 x M20
2 x M20 / M25
1 x M32 / M40
sidewalls, each:
8 x M20
2 x M25 / M32

Description	Order N°	Packing Qty
IP 65 distribution box, 1 row, 14 way units, $U_i=400$ V, PE/N terminals 2 x 12-pole, 6/16 mm ² top end elastic entries, with cable cover, cover and marker strips supplementary double membrane spouts and other accessories	735 414 01	1
<i>Recommended accessories:</i>		
IP 68 cable gland with lock-nut		
M20 (seal range 6 - 12 mm)	227 420 01	50
M20 (" 7 - 14 mm)	227 421 01	30
M25 (" 7 - 16 mm)	227 425 01	25
M32 (" 11 - 21 mm)	227 432 01	10
M40 (" 16 - 28 mm)	227 440 01	5
IP 66 double membrane spouts		
M20 (seal range 7 - 12 mm)	260 420 01	600 / 50
M25 (" 9 - 16 mm)	260 425 01	600 / 50
M32 (" 14 - 21 mm)	260 432 01	300 / 25
IP 65 combination set	791 001 01	1

AK 28
450 x 300 x 142 mm



Top end entries:
17 x M20
2 x M20 / M25
1 x M32 / M40
bottom:
15 x M20
2 x M20 / M25
1 x M32 / M40
sidewalls, each:
12 x M20
3 x M25 / M32

IP 65 distribution box, 2 row, 28 way units, $U_i=400$ V, 150 mm rail distance PE/N terminals 2 x 17-pole, 6/16/25 mm ² top end elastic entries, with cable cover, cover and marker strips supplementary double membrane spouts and other accessories	735 428 01	1
<i>Recommended accessories:</i>		
IP 68 cable gland with lock-nut		
M20 (seal range 6 - 12 mm)	227 420 01	50
M20 (" 7 - 14 mm)	227 421 01	30
M25 (" 7 - 16 mm)	227 425 01	25
M32 (" 11 - 21 mm)	227 432 01	10
M40 (" 16 - 28 mm)	227 440 01	5
IP 66 double membrane spouts		
M20 (seal range 7 - 12 mm)	260 420 01	600 / 50
M25 (" 9 - 16 mm)	260 425 01	600 / 50
M32 (" 14 - 21 mm)	260 432 01	300 / 25
IP 65 AK combination set	791 001 01	1

Colour Key
Resistant
Partially Resistant
Not Resistant

- Environment
- Weak Alkali
- Strong Alkali
- Alcohol
- Petrol
- Benzene
- Mineral Oil
- Diesel
- Ammonia
- Vegetable Oil
- Animal Oil

735 - 414

AK 14

Farnell Order Code
776-7536

IP65 Material:
Polystyrene

Dimensions: 300 x 300 x
142

Op. Temp: -40 to +70 Deg. C

Max Temp: 80 Deg. C