

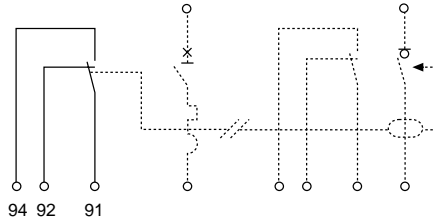
# Electrical auxiliaries

## For DPN, C60 and C120



26927

### SD fault indicating switch



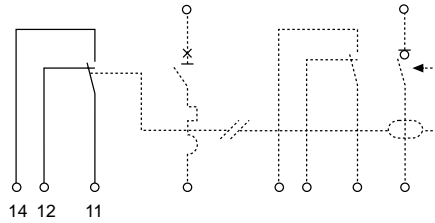
Part N°.	Width in 18mm SP ways
26927	0.5

Contact rating	(V)	(A)
Auxiliary contact	240Vac	6A
changes when device trips, with front face indication.	415Vac	3A
	24Vdc	6A
	48Vdc	2A
	125Vdc	1A



26924

### OF auxiliary contact



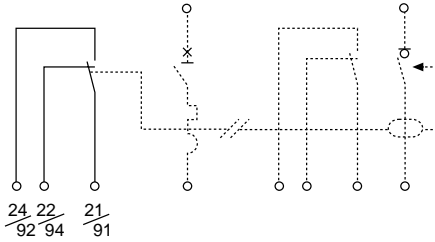
Part N°.	Width in 18mm SP ways
26924	0.5

Contact rating	(V)	(A)
Auxiliary contact	240Vac	6A
changes with main contacts (ON/OFF)	415Vac	3A
with test button on front face.	24Vdc	6A
	48Vdc	2A
	125Vdc	1A



26929

### OF + SD/OF selector switch



Part N°.	Width in 18mm SP ways
26929	0.5

Auxiliary contact and selectable auxiliary or fault contact with front face indication.