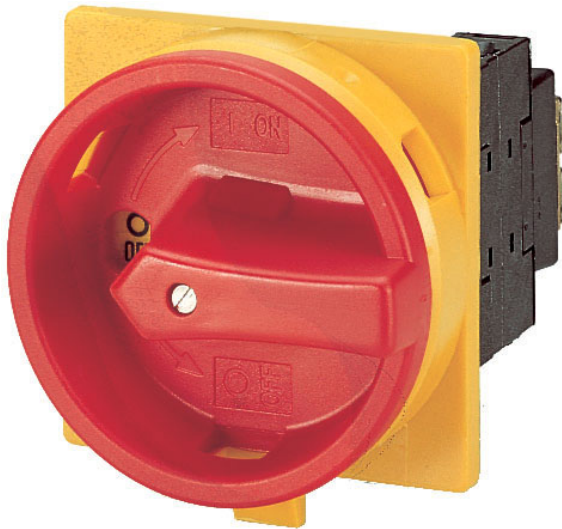


Type: **T3-1-8200/EA/SVB**
 Article No.: **066576**
 Sales text **ON-OFF SWITCH**



Ordering information

			BME-CAT Fotos
Produktgruppen-Bezeichnung			T3-...
			Load current switches
			Main switches, maintenance switches
Design			Flush mounting
Basic type for ... insert mounting form			T3-1-8200/...
Mounting form			EA/SVB
No. of poles		M	1
Description			As Emergency-Stop device

General

Standards			IEC/EN 60947, VDE 0660, IEC/EN 60204, CSA, UL Switch-disconnectors to IEC/EN 60947-3 Load-break switches to IEC/EN 60947-3
Lifespan, mechanical	Operations	$\times 10^6$	0,5
Maximum operating frequency	Operations/h		3000
Climatic proofing			Damp heat, constant, to IEC 60068-2-78; Damp heat, cyclical, to IEC 60068-2-30

Ambient temperature			
Open		°C	–25...50
Enclosed		°C	–25...40
Mounting position			As required
Mechanical shock resistance to IEC 60068–2–27	Half–sinusoidal shock 20 ms	g	> 15
Contacts			
Rated operational voltage	U_e	V AC	690
Rated impulse withstand voltage	U_{imp}	V AC	6000
Overvoltage category/pollution degree			III/3
Rated uninterrupted current			
open	I_u	A	32
Enclosed	I_u	A	32
Load rating with intermittent operation, class 12			
AB 25 % DF		$\times I_e$	2
AB 40 % DF		$\times I_e$	1,6
AB 60 % DF		$\times I_e$	1,3
Short–circuit rating			
Fuse		A gG/gL	35
Rated short–time withstand current (1 s current)	I_{cw}	A_{rms}	650
Safe isolation to VDE 0106 Part 101 and Part 101/A1			
between the contacts		V AC	440
Switching angles		°	90 60 45 30
Contact units			11
Double–break contacts			max. 22
Current heat loss per contact at I_e		W	1,1
Terminal capacities			
Solid or stranded		mm ²	1 × (1 – 6) 2 × (1 – 6)
Flexible with ferrule to DIN 46228		mm ²	1 × (0.75 – 4) 2 × (0.75 – 4)
Terminal screw			M4
Tightening torque		Nm	1.6

Switching capacity			
AC			
Rated making capacity $\cos = 0.35$		A	320
Rated breaking capacity, motor load switch $\cos = 0.35$			
230 V		A	260
400 V		A	260
500 V		A	240
690 V		A	170
Rated operational current 440 V load-break switch AC-21A	I_e	A	32
AC-3 motor load switch motor rating			
230 V	P	kW	1,8
230 V Star-delta	P	kW	11
400 V	P	kW	3,6
400 V Star-delta	P	kW	18,5
500 V	P	kW	15
500 V Star-delta	P	kW	22
690 V	P	kW	0
690 V Star-delta	P	kW	22
AC-23A Motor load switches (main switches maintenance switches)			
230 V	P	kW	7,5
400 V	P	kW	13
500 V	P	kW	15
Rated operational current control switch AC-15			
230 V	I_e	A	10
400 V	I_e	A	6
500 V	I_e	A	4
DC			
DC-1, Load-break switches L/R = 1 ms			
Rated operational current	I_e	A	25
Voltage per contact pair in series		V	60
DC-21A			
Rated operational current 240 V	I_e	A	1

240 V Contacts		Quantity	1
DC–23A, motor load switch L/R = 15 ms			
24 V			
Rated operational current	I_e	A	25
Contacts		Quantity	1
48 V			
Rated operational current	I_e	A	25
Contacts		Quantity	2
60 V			
Rated operational current	I_e	A	25
Contacts		Quantity	3
120 V			
Rated operational current	I_e	A	12
Contacts		Quantity	3
240 V			
Rated operational current	I_e	A	5
Contacts		Quantity	5
DC–13, Control switches L/R = 50 ms			
Rated operational current	I_e	A	20
Voltage per contact pair in series		V	32
Control circuit reliability at 24 V DC, 10 mA	Fault probability	H_F	$< 10^{-5}$, < 1 fault in 100000 operations

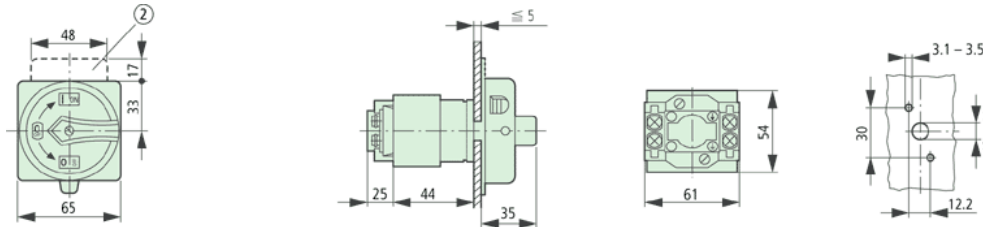
Notes

Notes

For mechanical shock resistance: T3.../I... >12g
Applies to T0(3).../SVB: isolating characteristics to IEC/EN 60947 U for rated operational voltage up to 500 V AC
Applies to rated uninterrupted current I_u of the contact: with T5–4–8344/I5 max. 95 A
For terminal capacity solid, stranded and flexible:
T0(3), (6), (8)...: Maximum of 2 cross-section sizes difference admissible between 2 conductors
T5(B)–...: Maximum of 1 cross-section size

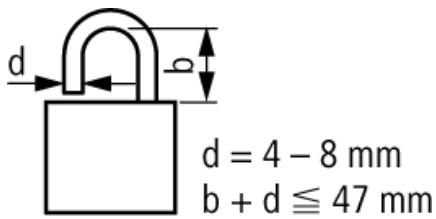
difference admissible
between 2 conductors
For type T8-3-8342/... the
following applies: switching
angle = 90° and flat
connection = 1 busbar 25 ×
5 or 2 busbars 20 × 3

Dimensions



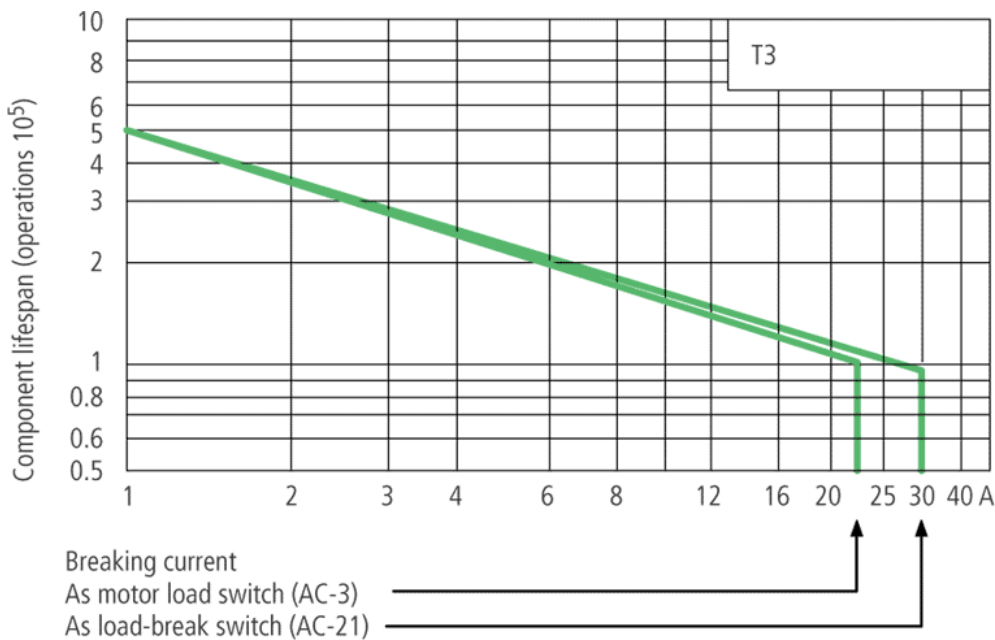
not included
Depth of a contact unit: 11.5 mm

Dimensions



3 padlocks

Characteristic curve



For utilisation category AC-4 (extreme load: 100 % inching, reversing or plugging)
The blocked rotor current of the motor should not exceed the rated current of the switch for AC-21A
to ensure a reasonable device lifespan.

Moeller GmbH, Hein-Moeller-Str. 7-11, D-53115 Bonn
E-Mail: catalog@moeller.net, Internet: www.moeller.net, <http://catalog.moeller.net>
HPL-C2007G V2.1 © 2007 by Moeller GmbH