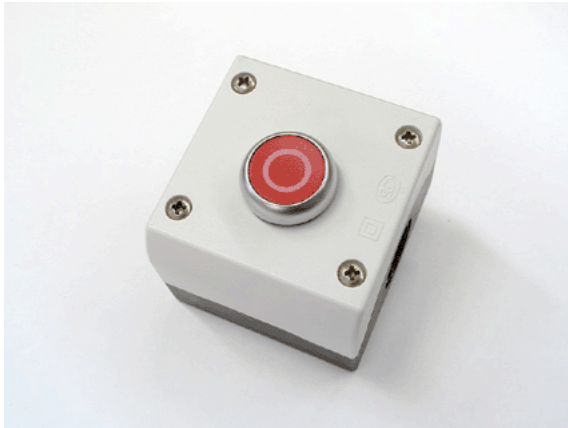


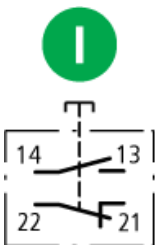
Type: **M22-D-G-X1/KC11/I**  
 Article No.: **216522**



Actuator flush

Ordering information			
Number of locations		Qty.	1
Auxiliary contacts: = safety function, by positive opening to IEC/EN 60947-5-1 N/O = Normally open			1 N/O
Auxiliary contacts: = safety function, by positive opening to IEC/EN 60947-5-1 N/C = Normally closed			1 N/C
Colour			RAL 7035

**Contact sequence**



**Button plate**



**Colour**



Moeller GmbH, Hein-Moeller-Str. 7-11, D-53115 Bonn  
 E-Mail: [catalog@moeller.net](mailto:catalog@moeller.net), Internet: [www.moeller.net](http://www.moeller.net), <http://catalog.moeller.net>

